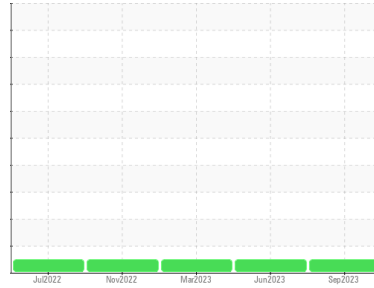




GREASE ANALYSIS

Sample Rating Trend



NORMAL



Area
Direct Strip Mill/Caster
 Machine Id
DSC222 NORTH EAST
 Component
Grease
 Fluid
FUCHS RENOLIT SUPERPLEX 2 (--- GAL)

DIAGNOSIS

Recommendation

Resample at the next service interval to monitor.

Wear

All component wear rates are normal.

Grease Condition

The condition of the grease is acceptable for the time in service.

Contaminants

There is no indication of any contamination in the grease.

| SAMPLE INFORMATION | | method | limit/base | current | history1 | history2 |
|--------------------|-------------|-------------|------------|--------------------|-------------|-------------|
| Sample Number | Client Info | | | WC0652683 | WC0804688 | WC0652679 |
| Sample Date | Client Info | | | 25 Sep 2023 | 25 Jun 2023 | 02 Mar 2023 |
| Machine Age | hrs | Client Info | | 0 | 0 | 0 |
| Grease Age | hrs | Client Info | | 0 | 0 | 0 |
| Grease Serviced | Client Info | | | N/A | N/A | N/A |
| Sample Status | | | | NORMAL | NORMAL | NORMAL |

| WEAR METALS | | method | limit/base | current | history1 | history2 |
|-------------|-----|---------------|------------|--------------|----------|----------|
| PQ | | ASTM D8184* | >200 | 470 | 1160 | 140 |
| Iron | ppm | ASTM D5185(m) | >250 | 67 | 45 | 11 |
| Chromium | ppm | ASTM D5185(m) | >10 | <1 | <1 | 0 |
| Nickel | ppm | ASTM D5185(m) | >5 | <1 | <1 | <1 |
| Cadmium | ppm | ASTM D5185(m) | | 0 | 0 | 0 |
| Titanium | ppm | ASTM D5185(m) | | 0 | 0 | 0 |
| Vanadium | ppm | ASTM D5185(m) | | 0 | 0 | <1 |
| Lead | ppm | ASTM D5185(m) | >25 | <1 | <1 | <1 |
| Copper | ppm | ASTM D5185(m) | >75 | <1 | <1 | 0 |
| Tin | ppm | ASTM D5185(m) | >5 | 0 | 0 | 0 |
| Silver | ppm | ASTM D5185(m) | >5 | <1 | <1 | 0 |

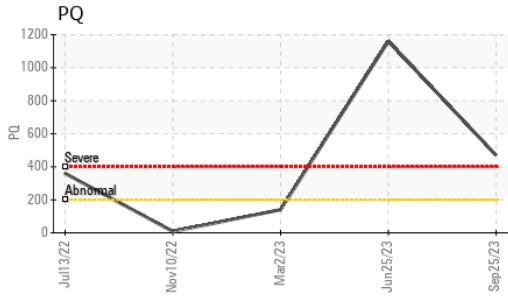
| ADDITIVES | | method | limit/base | current | history1 | history2 |
|------------|-----|---------------|------------|--------------|----------|----------|
| Boron | ppm | ASTM D5185(m) | | <1 | 0 | 1 |
| Magnesium | ppm | ASTM D5185(m) | | 3 | <1 | 1 |
| Manganese | ppm | ASTM D5185(m) | | 0 | <1 | 0 |
| Molybdenum | ppm | ASTM D5185(m) | | 9 | 1 | 2 |
| Phosphorus | ppm | ASTM D5185(m) | | <1 | <1 | 0 |
| Zinc | ppm | ASTM D5185(m) | | <1 | 2 | <1 |
| Antimony | ppm | ASTM D5185(m) | | 65 | 45 | 52 |

| THICKENER/SOAP | | method | limit/base | current | history1 | history2 |
|----------------|-----|---------------|------------|--------------|----------|----------|
| Aluminum | ppm | ASTM D5185(m) | | 280 | 161 | 161 |
| Barium | ppm | ASTM D5185(m) | | <1 | 0 | 0 |
| Calcium | ppm | ASTM D5185(m) | | 12 | 10 | 10 |
| Sodium | ppm | ASTM D5185(m) | | 35 | 3 | 4 |
| Lithium | ppm | ASTM D5185(m) | | <1 | <1 | <1 |
| Sulfur | ppm | ASTM D5185(m) | | 451 | 379 | 424 |

| CONTAMINANTS | | method | limit/base | current | history1 | history2 |
|--------------|-----|---------------|------------|--------------|----------|----------|
| Silicon | ppm | ASTM D5185(m) | >150 | 4 | 2 | 5 |
| Potassium | ppm | ASTM D5185(m) | | <1 | <1 | <1 |

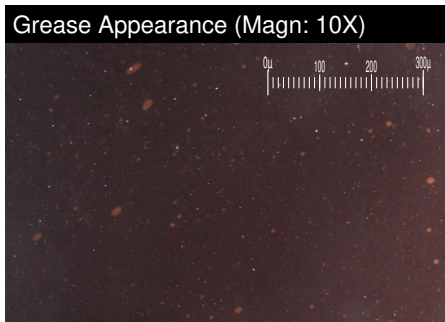
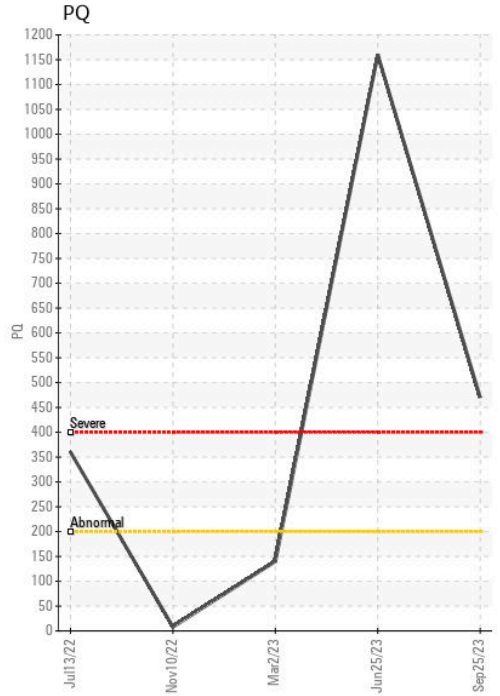
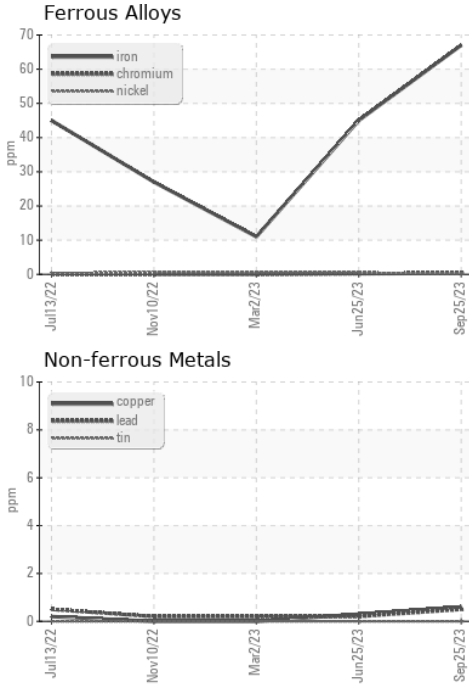
| GREASE CONDITION | | method | limit/base | current | history1 | history2 |
|------------------|------------|-------------|------------|-------------------|----------|----------|
| Grease Color | Visual* | Black | | Black | Black | Black |
| Texture | In-house* | Tacky | | Long fiber | Stringy | Buttery |
| NLGI Consistency | NLGI Scale | SKF Method* | 2 | 2 | 2 | 1 |

GREASE ANALYSIS



| SAMPLE IMAGES | method | limit/base | current | history1 | history2 |
|---------------|--------|------------|---------|----------|----------|
| Color | | | | | |
| Bottom | | | | | |
| PrtFilter | | | | | |

GRAPHS



Laboratory : WearCheck - C8-1175 Appleby Line, Burlington, ON L7L 5H9 **ALGOMA STEEL INC. - STORES DEPT.**
Sample No. : WC0652683 **Received** : 02 Oct 2023 **301 WALLACE TERRACE**
Lab Number : **02586230** **Diagnosed** : 04 Oct 2023 **SAULT STE MARIE, ON**
Unique Number : 5655296 **Diagnostician** : Bill Quesnel **CA P6C 1K8**
Test Package : GRS 1 (Additional Tests: BottomAnalysis) **Contact: Algoma Reliability**
algomareliability@algoma.com

To discuss this sample report, contact Customer Service at 1-800-268-2131.
 Test denoted (*) outside scope of accreditation, (m) method modified, (e) tested at external lab.
 Validity of results and interpretation are based on the sample and information as supplied.

T: (705)206-1059
F: (705)945-3585