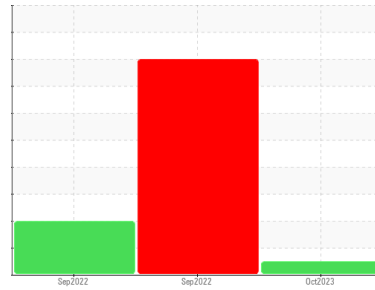




# FUEL REPORT

Sample Rating Trend



**NORMAL**



Area  
**[327958]**  
 Machine Id  
**L170288431 - G2**

Component  
**Diesel Fuel**  
 Fluid  
**No.2 DIESEL FUEL (ULTRALOW SULPHUR) (--- GAL)**

## DIAGNOSIS

### Recommendation

Les tests de laboratoire indiquent que ce carburant peut être utilisé et qu'il répond à toutes les exigences. Échantillonner de nouveau l'équipement au prochain intervalle de vidange afin d'en surveiller la condition.

### Corrosion

(sans objet)

### Contaminants

La propreté du système est acceptable pour votre objectif de propreté ISO 4406. La teneur en eau est négligeable. Il n'y a aucun indice de contamination dans le carburant diesel.

### Fuel Condition

Tous les essais en laboratoire indiquent que cet échantillon satisfait aux spécifications pour le carburant diesel à ultra-faible teneur de soufre No.2 (US EPA/CGSB-3.517-3 type B).

SAMPLE INFORMATION		method	limit/base	current	history1	history2
Sample Number	Client Info			<b>CU0021586</b>	CU0019374	CU0019365
Sample Date	Client Info			<b>02 Oct 2023</b>	25 Sep 2022	21 Sep 2022
Machine Age	hrs	Client Info		<b>0</b>	0	0
Sample Status				<b>NORMAL</b>	SEVERE	ABNORMAL

PHYSICAL PROPERTIES		method	limit/base	current	history1	history2
Specific Gravity		ASTM D1298*	0.839	<b>0.828</b>	0.829	0.827
Fuel Color	text	Visual Screen*	Yellow	<b>Pink</b>	Orang	Red
Visc @ 40°C	cSt	ASTM D7279(m)	3.0	<b>2.1</b>	2.1	2.1
Pensky-Martens Flash Point	°C	ASTM D7215*	52	<b>51.9</b>	51.9	54.2

SULFUR CONTENT		method	limit/base	current	history1	history2
Sulfur	ppm	ASTM D5185(m)	10	<b>9</b>	10	7

DISTILLATION		method	limit/base	current	history1	history2
Initial Boiling Point	°C	ASTM D2887*	165	<b>160</b>	155	156
5% Distillation Point	°C	ASTM D2887*		<b>181</b>	176	178
10% Distill Point	°C	ASTM D2887*	201	<b>190</b>	187	189
15% Distillation Point	°C	ASTM D2887*		<b>197</b>	195	197
20% Distill Point	°C	ASTM D2887*	216	<b>204</b>	202	205
30% Distill Point	°C	ASTM D2887*	230	<b>217</b>	216	217
40% Distill Point	°C	ASTM D2887*	243	<b>229</b>	229	230
50% Distill Point	°C	ASTM D2887*	255	<b>242</b>	243	244
60% Distill Point	°C	ASTM D2887*	267	<b>258</b>	258	259
70% Distill Point	°C	ASTM D2887*	280	<b>274</b>	274	274
80% Distill Point	°C	ASTM D2887*	295	<b>293</b>	293	292
85% Distillation Point	°C	ASTM D2887*		<b>306</b>	304	304
90% Distill Point	°C	ASTM D2887*	310	<b>319</b>	318	317
95% Distillation Point	°C	ASTM D2887*		<b>341</b>	337	336
Final Boiling Point	°C	ASTM D2887*	341	<b>368</b>	347	347

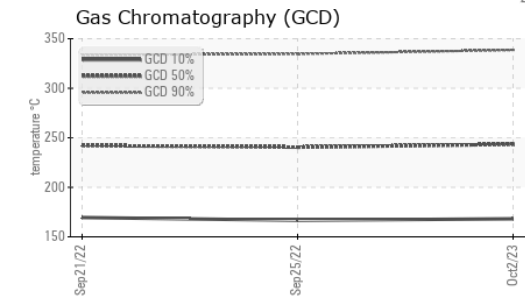
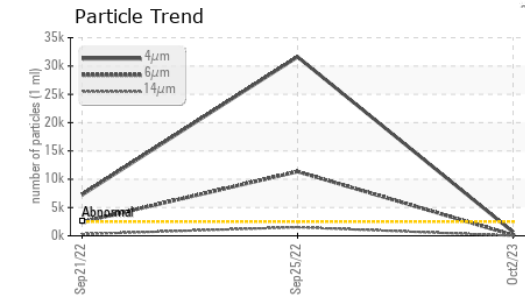
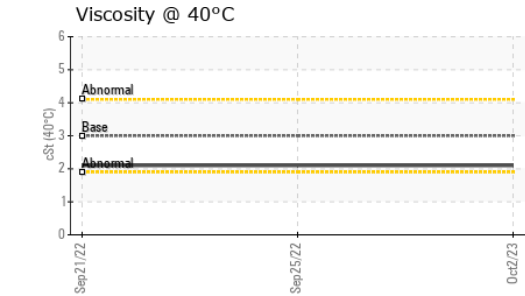
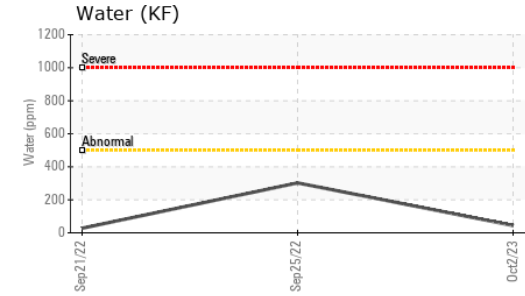
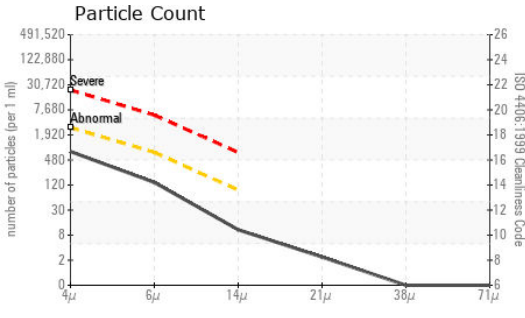
IGNITION QUALITY		method	limit/base	current	history1	history2
API Gravity		ASTM D1298*	37.7	<b>39</b>	39	39
Cetane Index		ASTM D4737*	<40.0	<b>48</b>	48	49

CONTAMINANTS		method	limit/base	current	history1	history2
Silicon	ppm	ASTM D5185(m)	<1.0	<b>0</b>	0	0
Sodium	ppm	ASTM D5185(m)	<0.1	<b>0</b>	0	0
Potassium	ppm	ASTM D5185(m)	<0.1	<b>&lt;1</b>	0	0
Water	%	ASTM D6304*	<0.05	<b>0.004</b>	0.030	0.003
ppm Water	ppm	ASTM D6304*	<500	<b>44.2</b>	302.3	27.8

FLUID CLEANLINESS		method	limit/base	current	history1	history2
Particles >4µm		ASTM D7647	>2500	<b>673</b>	31608	7244
Particles >6µm		ASTM D7647	>640	<b>122</b>	11355	2436
Particles >14µm		ASTM D7647	>80	<b>9</b>	1515	295
Particles >21µm		ASTM D7647	>20	<b>2</b>	516	77
Particles >38µm		ASTM D7647	>4	<b>0</b>	26	2
Particles >71µm		ASTM D7647	>3	<b>0</b>	2	0
Oil Cleanliness		ISO 4406 (c)	>18/16/13	<b>17/14/10</b>	22/21/18	20/18/15



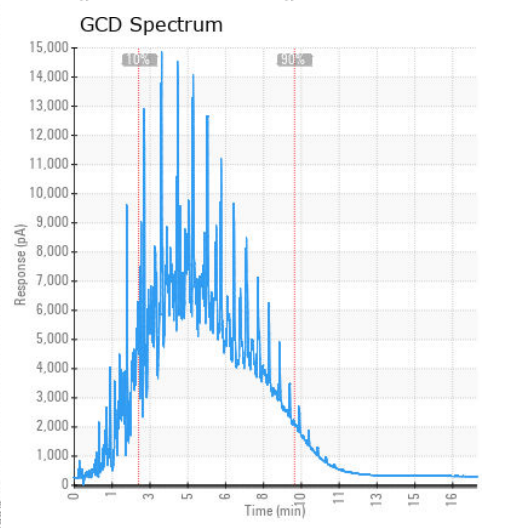
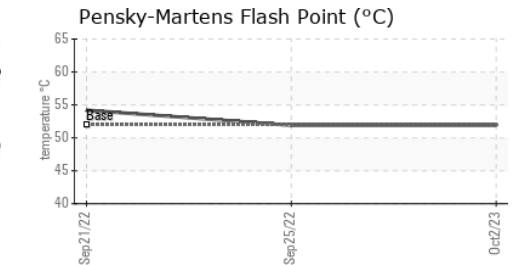
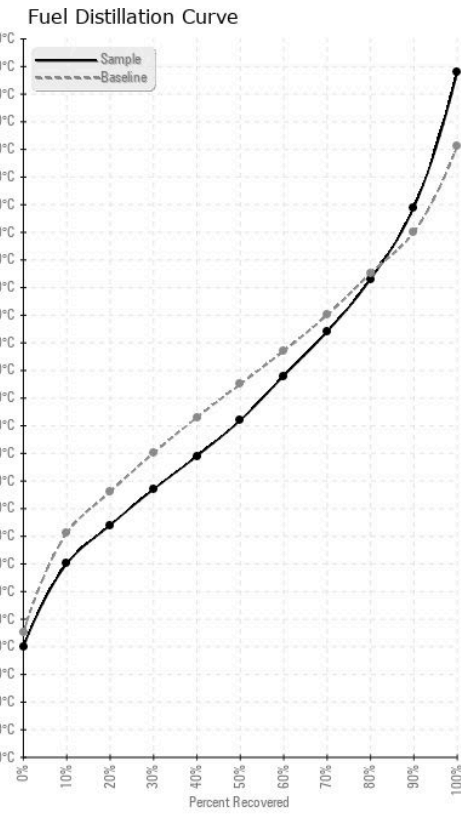
# FUEL REPORT



HEAVY METALS	method	limit/base	current	history1	history2
Aluminum	ppm	ASTM D5185(m)	<0.1	0	0
Nickel	ppm	ASTM D5185(m)	<0.1	0	0
Lead	ppm	ASTM D5185(m)	<0.1	0	0
Vanadium	ppm	ASTM D5185(m)	<0.1	0	0
Iron	ppm	ASTM D5185(m)	<1	<1	<1
Calcium	ppm	ASTM D5185(m)	<0.1	<1	<1
Magnesium	ppm	ASTM D5185(m)	0	0	0
Phosphorus	ppm	ASTM D5185(m)	<0.1	<1	<1
Zinc	ppm	ASTM D5185(m)	<0.1	<1	<1

SAMPLE IMAGES	method	limit/base	current	history1	history2
Color					
Bottom					

## GRAPHS



**Laboratory** : WearCheck - C8-1175 Appleby Line, Burlington, ON L7L 5H9  
**Sample No.** : CU0021586  
**Lab Number** : 02586545  
**Unique Number** : 5655611  
**Test Package** : FUEL ( Additional Tests: CC Flash, GC-PercFuel, PrtCount )

**CUMMINS EASTERN CANADA LP**  
 315 AV LIBERTE  
 CANDIAC, QC  
 CA J5R 6Z7  
 Contact: Thomas Owens  
 is275@cummins.com  
 T: (450)638-6863  
 F: (450)638-1202

To discuss this sample report, contact Customer Service at 1-800-268-2131.  
 Test denoted (\*) outside scope of accreditation, (m) method modified, (e) tested at external lab.  
 Validity of results and interpretation are based on the sample and information as supplied.