

Machine Id  
**DAVIS STANDARD EM1 EXTRUDER**

Component  
**Gearbox**  
Fluid  
**ESSO SPARTAN EP 150 (--- GAL)**

**DIAGNOSIS**

**Recommendation**  
Resample at the next service interval to monitor.  
NOTE: Please provide information regarding reservoir capacity, filter type and micron rating with next sample.

**Wear**  
All component wear rates are normal.

**Contamination**  
There is no indication of any contamination in the oil.

**Fluid Condition**  
The AN level is acceptable for this fluid. The condition of the oil is suitable for further service.

**SAMPLE INFORMATION**

	method	limit/base	current	history1	history2
Sample Number	Client Info		<b>AW0004027</b>	AW0003980	AW0003877
Sample Date	Client Info		<b>24 Sep 2023</b>	13 Aug 2022	06 Aug 2021
Machine Age	mths	Client Info	<b>0</b>	0	0
Oil Age	mths	Client Info	<b>12</b>	17	0
Oil Changed	Client Info		<b>Not Changed</b>	Changed	Not Changed
Sample Status			<b>NORMAL</b>	NORMAL	NORMAL

**WEAR METALS**

	method	limit/base	current	history1	history2
PQ	ASTM D8184*		<b>0</b>	---	---
Iron	ppm	ASTM D5185(m) >200	<b>6</b>	5	5
Chromium	ppm	ASTM D5185(m) >15	<b>0</b>	0	0
Nickel	ppm	ASTM D5185(m) >15	<b>&lt;1</b>	0	<1
Titanium	ppm	ASTM D5185(m)	<b>0</b>	0	0
Silver	ppm	ASTM D5185(m)	<b>&lt;1</b>	0	0
Aluminum	ppm	ASTM D5185(m) >25	<b>0</b>	0	0
Lead	ppm	ASTM D5185(m) >100	<b>0</b>	0	0
Copper	ppm	ASTM D5185(m) >200	<b>&lt;1</b>	<1	<1
Tin	ppm	ASTM D5185(m) >25	<b>0</b>	0	<1
Antimony	ppm	ASTM D5185(m) >5	<b>0</b>	<1	<1
Vanadium	ppm	ASTM D5185(m)	<b>0</b>	0	0
Beryllium	ppm	ASTM D5185(m)	<b>0</b>	0	0
Cadmium	ppm	ASTM D5185(m)	<b>0</b>	0	0

**ADDITIVES**

	method	limit/base	current	history1	history2
Boron	ppm	ASTM D5185(m) 4.0	<b>16</b>	19	12
Barium	ppm	ASTM D5185(m) 0	<b>&lt;1</b>	0	0
Molybdenum	ppm	ASTM D5185(m) 0	<b>0</b>	0	0
Manganese	ppm	ASTM D5185(m)	<b>0</b>	<1	<1
Magnesium	ppm	ASTM D5185(m) 0	<b>&lt;1</b>	<1	<1
Calcium	ppm	ASTM D5185(m) 0.8	<b>15</b>	15	18
Phosphorus	ppm	ASTM D5185(m) 250	<b>255</b>	268	274
Zinc	ppm	ASTM D5185(m) 1.0	<b>3</b>	2	2
Sulfur	ppm	ASTM D5185(m) 5133	<b>7855</b>	8297	8745
Lithium	ppm	ASTM D5185(m)	<b>&lt;1</b>	<1	<1

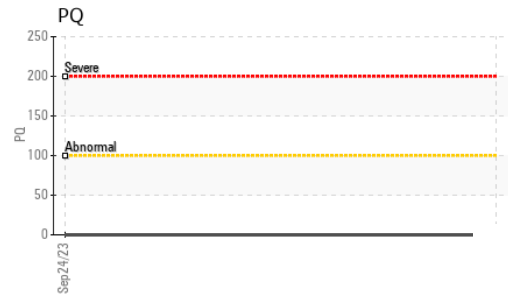
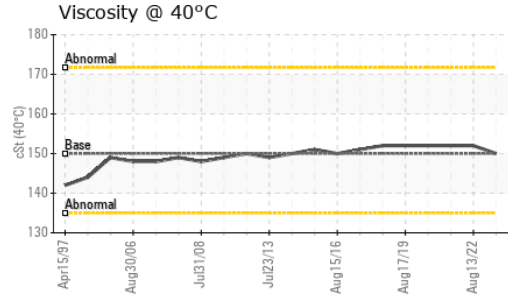
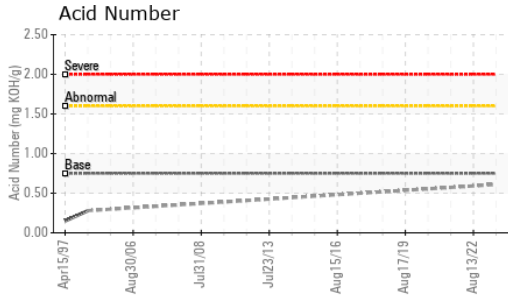
**CONTAMINANTS**

	method	limit/base	current	history1	history2
Silicon	ppm	ASTM D5185(m) >50	<b>1</b>	2	4
Sodium	ppm	ASTM D5185(m)	<b>1</b>	<1	<1
Potassium	ppm	ASTM D5185(m) >20	<b>0</b>	<1	<1

**FLUID DEGRADATION**

	method	limit/base	current	history1	history2
Acid Number (AN)	mg KOH/g	ASTM D974* 0.75	<b>0.61</b>	---	---

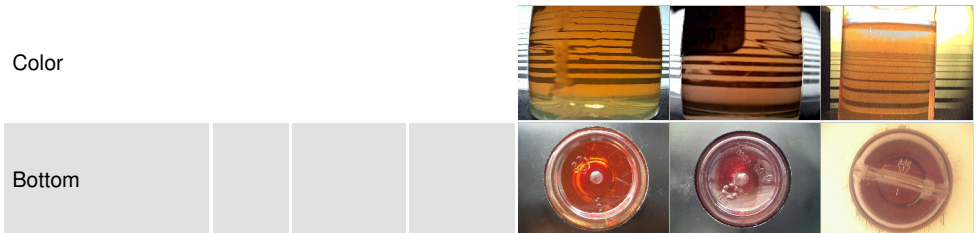
# OIL ANALYSIS REPORT



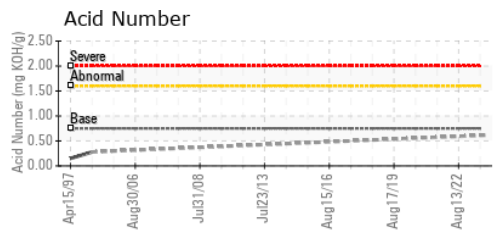
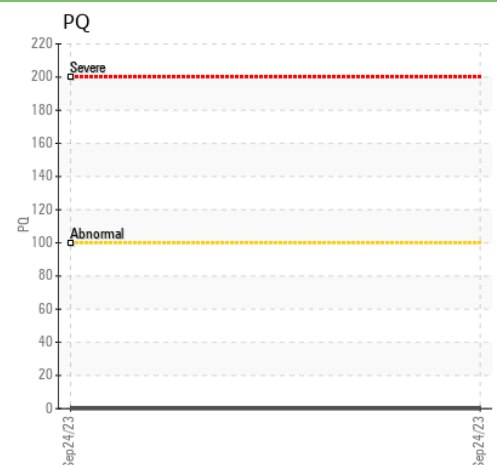
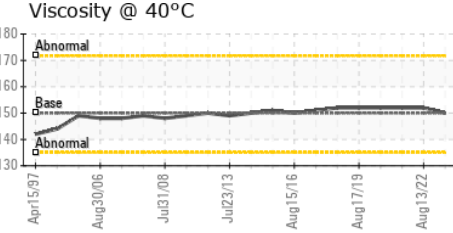
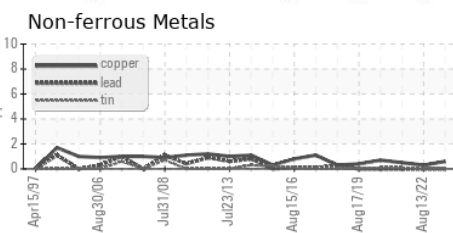
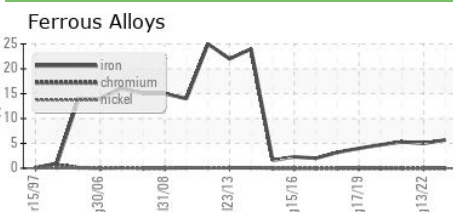
VISUAL	method	limit/base	current	history1	history2
White Metal	scalar	Visual*	NONE	NONE	NONE
Yellow Metal	scalar	Visual*	NONE	NONE	NONE
Precipitate	scalar	Visual*	NONE	NONE	NONE
Silt	scalar	Visual*	NONE	NONE	NONE
Debris	scalar	Visual*	NONE	NONE	NONE
Sand/Dirt	scalar	Visual*	NONE	NONE	NONE
Appearance	scalar	Visual*	NORML	NORML	NORML
Odor	scalar	Visual*	NORML	NORML	NORML
Emulsified Water	scalar	Visual*	>0.2	NEG	NEG
Free Water	scalar	Visual*		NEG	NEG

FLUID PROPERTIES	method	limit/base	current	history1	history2
Visc @ 40°C	cSt	ASTM D7279(m)	150	152	152

SAMPLE IMAGES	method	limit/base	current	history1	history2
---------------	--------	------------	---------	----------	----------



## GRAPHS



**Laboratory** : WearCheck - C8-1175 Appleby Line, Burlington, ON L7L 5H9  
**Sample No.** : AW0004027 **Received** : 05 Oct 2023  
**Lab Number** : 02587316 **Diagnosed** : 06 Oct 2023  
**Unique Number** : 5656382 **Diagnostician** : Wes Davis  
**Test Package** : IND 2 ( Additional Tests: TAN Man )

**SHAWFLEX INC.**  
 25 BETHRIDGE ROAD  
 TORONTO, ON  
 CA M9W 1M7  
 Contact: Robert Fuller  
 rfuller@shawflex.shawcor.com  
 T: (416)743-7111  
 F: (416)743-5060

To discuss this sample report, contact Customer Service at 1-800-268-2131.  
 Test denoted (\*) outside scope of accreditation, (m) method modified, (e) tested at external lab.  
 Validity of results and interpretation are based on the sample and information as supplied.