



# FUEL REPORT

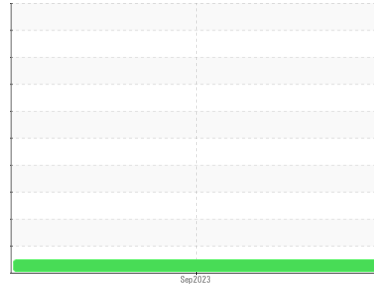
Sample Rating Trend

**NORMAL**



Area  
**SHORELINES CASINO [149949]**  
Machine Id  
**85003991**

Component  
**Diesel Fuel**  
Fluid  
**No.2 DIESEL FUEL (ULTRALOW SULPHUR) (--- GAL)**



## DIAGNOSIS

### Recommendation

Laboratory test indicate that this fuel is suitable for use and meets all test requirements. Resample at the next service interval to monitor.

### Corrosion

{not applicable}

### Contaminants

The system cleanliness is acceptable for your target ISO 4406 cleanliness code. The water content is negligible. There is no indication of any contamination in the diesel fuel.

### Fuel Condition

All laboratory tests indicate that this sample meets specifications for No.2 ultra-low-sulfur diesel fuel (US EPA/CGSB-3.517-3 type B).

## SAMPLE INFORMATION

	method	limit/base	current	history1	history2
Sample Number	Client Info		<b>CU0021400</b>	---	---
Sample Date	Client Info		<b>18 Sep 2023</b>	---	---
Machine Age	hrs	Client Info	<b>81</b>	---	---
Sample Status			<b>NORMAL</b>	---	---

## PHYSICAL PROPERTIES

	method	limit/base	current	history1	history2
Specific Gravity	ASTM D1298*	0.839	<b>0.841</b>	---	---
Fuel Color	text	Visual Screen*	<b>Yellow</b>	---	---
Visc @ 40°C	cSt	ASTM D7279(m)	<b>3.0</b>	---	---
Pensky-Martens Flash Point	°C	ASTM D7215*	<b>52</b>	---	---

## SULFUR CONTENT

	method	limit/base	current	history1	history2
Sulfur	ppm	ASTM D5185(m)	<b>10</b>	---	---

## DISTILLATION

	method	limit/base	current	history1	history2
Initial Boiling Point	°C	ASTM D2887*	<b>165</b>	---	---
5% Distillation Point	°C	ASTM D2887*	<b>197</b>	---	---
10% Distill Point	°C	ASTM D2887*	<b>201</b>	---	---
15% Distillation Point	°C	ASTM D2887*	<b>214</b>	---	---
20% Distill Point	°C	ASTM D2887*	<b>216</b>	---	---
30% Distill Point	°C	ASTM D2887*	<b>230</b>	---	---
40% Distill Point	°C	ASTM D2887*	<b>243</b>	---	---
50% Distill Point	°C	ASTM D2887*	<b>255</b>	---	---
60% Distill Point	°C	ASTM D2887*	<b>267</b>	---	---
70% Distill Point	°C	ASTM D2887*	<b>280</b>	---	---
80% Distill Point	°C	ASTM D2887*	<b>295</b>	---	---
85% Distillation Point	°C	ASTM D2887*	<b>306</b>	---	---
90% Distill Point	°C	ASTM D2887*	<b>310</b>	---	---
95% Distillation Point	°C	ASTM D2887*	<b>333</b>	---	---
Final Boiling Point	°C	ASTM D2887*	<b>341</b>	---	---

## IGNITION QUALITY

	method	limit/base	current	history1	history2
API Gravity	ASTM D1298*	37.7	<b>36</b>	---	---
Cetane Index	ASTM D4737*	<40.0	<b>47</b>	---	---

## CONTAMINANTS

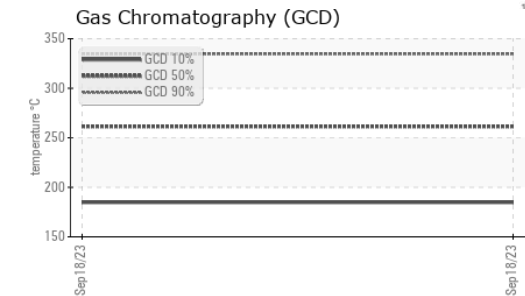
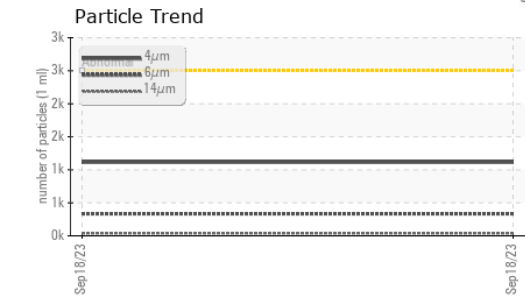
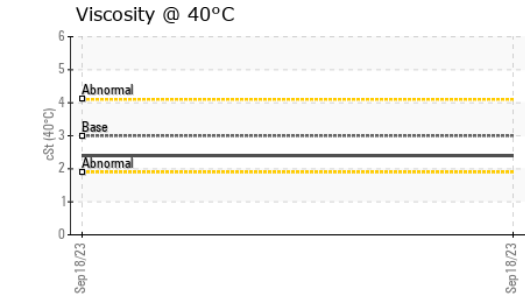
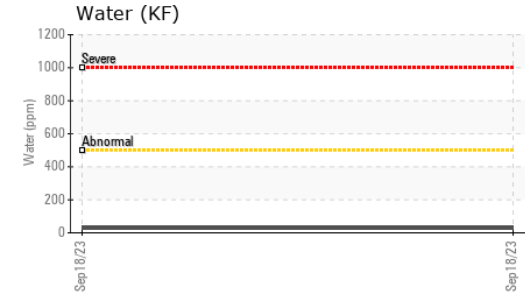
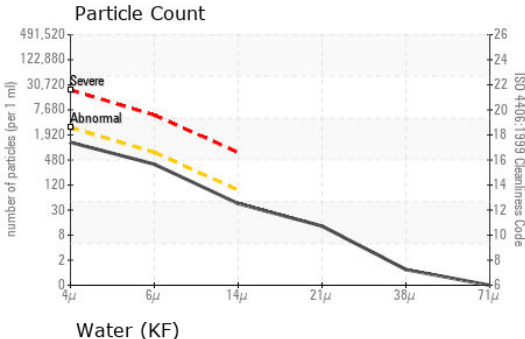
	method	limit/base	current	history1	history2
Silicon	ppm	ASTM D5185(m)	<1.0	<b>0</b>	---
Sodium	ppm	ASTM D5185(m)	<0.1	<b>0</b>	---
Potassium	ppm	ASTM D5185(m)	<0.1	<b>&lt;1</b>	---
Water	%	ASTM D6304*	<0.05	<b>0.003</b>	---
ppm Water	ppm	ASTM D6304*	<500	<b>28.5</b>	---

## FLUID CLEANLINESS

	method	limit/base	current	history1	history2
Particles >4µm	ASTM D7647	>2500	<b>1115</b>	---	---
Particles >6µm	ASTM D7647	>640	<b>334</b>	---	---
Particles >14µm	ASTM D7647	>80	<b>38</b>	---	---
Particles >21µm	ASTM D7647	>20	<b>11</b>	---	---
Particles >38µm	ASTM D7647	>4	<b>1</b>	---	---
Particles >71µm	ASTM D7647	>3	<b>0</b>	---	---
Oil Cleanliness	ISO 4406 (c)	>18/16/13	<b>17/16/12</b>	---	---



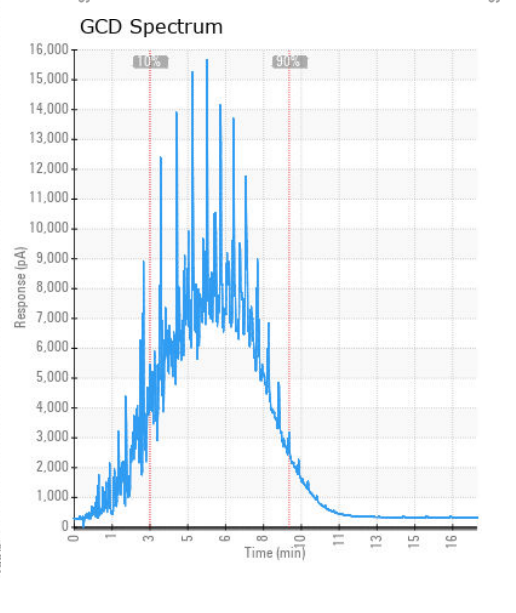
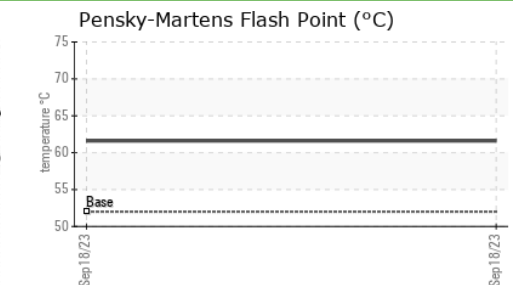
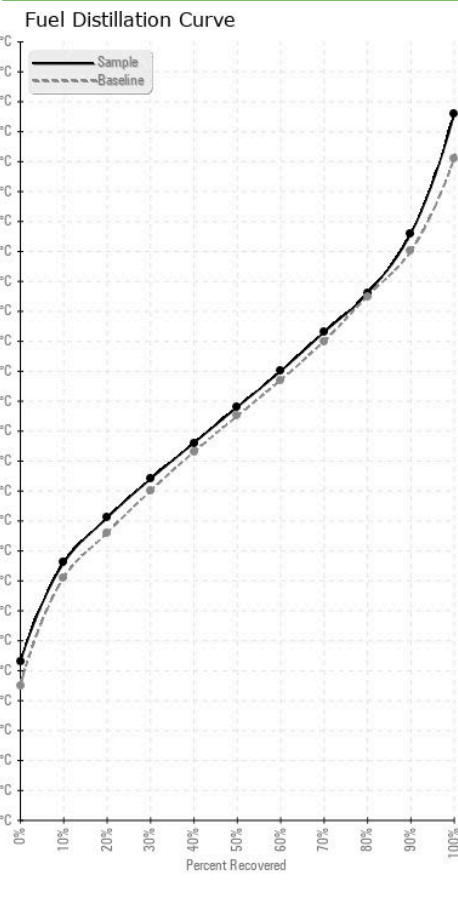
# FUEL REPORT



HEAVY METALS	method	limit/base	current	history1	history2
Aluminum	ppm	ASTM D5185(m)	<0.1	0	---
Nickel	ppm	ASTM D5185(m)	<0.1	0	---
Lead	ppm	ASTM D5185(m)	<0.1	0	---
Vanadium	ppm	ASTM D5185(m)	<0.1	0	---
Iron	ppm	ASTM D5185(m)	<0.1	<1	---
Calcium	ppm	ASTM D5185(m)	<0.1	0	---
Magnesium	ppm	ASTM D5185(m)	<0.1	0	---
Phosphorus	ppm	ASTM D5185(m)	<0.1	<1	---
Zinc	ppm	ASTM D5185(m)	<0.1	0	---

SAMPLE IMAGES	method	limit/base	current	history1	history2
Color				no image	no image
Bottom				no image	no image

## GRAPHS



**Laboratory** : WearCheck - C8-1175 Appleby Line, Burlington, ON L7L 5H9 CUMMINS CANADA ULC - GENERATOR DIVISION  
**Sample No.** : CU0021400 **Received** : 06 Oct 2023 7175 PACIFIC CIRCLE  
**Lab Number** : 02587885 **Diagnosed** : 11 Oct 2023 MISSISSAUGA, ON  
**Unique Number** : 5656951 **Diagnostician** : Kevin Marson CA L5T 2A5  
**Test Package** : FUEL ( Additional Tests: CC Flash, GC-PercFuel, PrtCount )  
 Contact: Elisia Johnson  
 elisia.johnson@cummins.com  
 T: (905)795-0050  
 F: (905)795-9252

To discuss this sample report, contact Customer Service at 1-800-268-2131.  
 Test denoted (\*) outside scope of accreditation, (m) method modified, (e) tested at external lab.  
 Validity of results and interpretation are based on the sample and information as supplied.