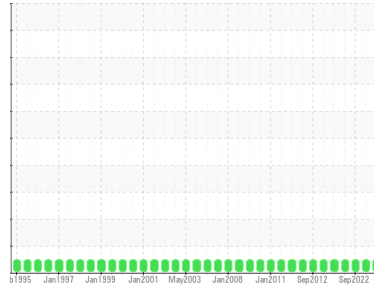




# OIL ANALYSIS REPORT

Sample Rating Trend

**NORMAL**



Area  
**71 STOCK PREPARATION**  
 Machine Id  
**Slusher (Drive) (S/N 715701)**  
 Component  
**Gear Reducer**  
 Fluid  
**MOBIL SHC 629 (10 GAL)**

## DIAGNOSIS

- Recommendation**  
 Resample at the next service interval to monitor.
- Wear**  
 All component wear rates are normal.
- Contamination**  
 There is no indication of any contamination in the oil.
- Fluid Condition**  
 The AN level is acceptable for this fluid. The condition of the oil is suitable for further service.

## SAMPLE INFORMATION

	method	limit/base	current	history1	history2
Sample Number	Client Info		<b>WC</b>	WC0789948	WC
Sample Date	Client Info		<b>03 Oct 2023</b>	23 Mar 2023	14 Sep 2022
Machine Age	hrs	Client Info	<b>0</b>	0	0
Oil Age	hrs	Client Info	<b>0</b>	0	0
Oil Changed	Client Info		<b>N/A</b>	N/A	N/A
Sample Status			<b>NORMAL</b>	NORMAL	NORMAL

## WEAR METALS

	method	limit/base	current	history1	history2
PQ	ASTM D8184*		<b>0</b>	0	0
Iron	ppm	ASTM D5185(m) >250	<b>27</b>	9	5
Chromium	ppm	ASTM D5185(m) >5	<b>0</b>	0	0
Nickel	ppm	ASTM D5185(m) >5	<b>0</b>	<1	<1
Titanium	ppm	ASTM D5185(m)	<b>0</b>	0	0
Silver	ppm	ASTM D5185(m)	<b>&lt;1</b>	0	0
Aluminum	ppm	ASTM D5185(m) >20	<b>&lt;1</b>	<1	0
Lead	ppm	ASTM D5185(m) >50	<b>0</b>	0	0
Copper	ppm	ASTM D5185(m) >50	<b>&lt;1</b>	0	0
Tin	ppm	ASTM D5185(m) >5	<b>0</b>	0	0
Antimony	ppm	ASTM D5185(m) >5	<b>&lt;1</b>	<1	<1
Vanadium	ppm	ASTM D5185(m)	<b>0</b>	0	0
Beryllium	ppm	ASTM D5185(m)	<b>0</b>	0	0
Cadmium	ppm	ASTM D5185(m)	<b>0</b>	0	0

## ADDITIVES

	method	limit/base	current	history1	history2
Boron	ppm	ASTM D5185(m)	<b>&lt;1</b>	1	<1
Barium	ppm	ASTM D5185(m)	<b>&lt;1</b>	0	0
Molybdenum	ppm	ASTM D5185(m)	<b>0</b>	0	0
Manganese	ppm	ASTM D5185(m)	<b>0</b>	<1	<1
Magnesium	ppm	ASTM D5185(m)	<b>&lt;1</b>	<1	0
Calcium	ppm	ASTM D5185(m)	<b>2</b>	0	<1
Phosphorus	ppm	ASTM D5185(m)	<b>479</b>	510	474
Zinc	ppm	ASTM D5185(m)	<b>8</b>	3	2
Sulfur	ppm	ASTM D5185(m)	<b>69</b>	79	175
Lithium	ppm	ASTM D5185(m)	<b>9</b>	2	<1

## CONTAMINANTS

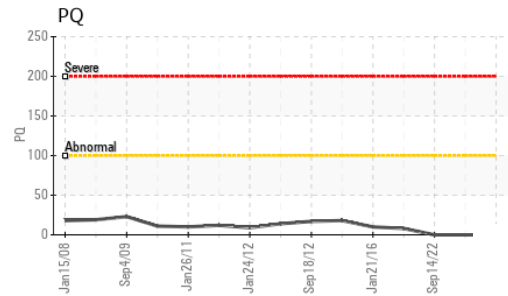
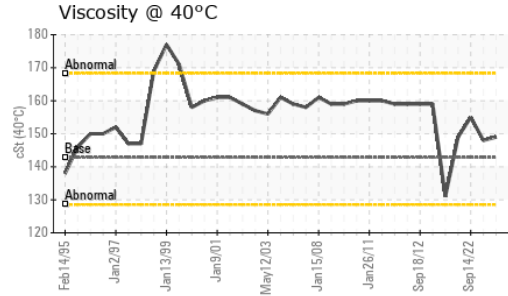
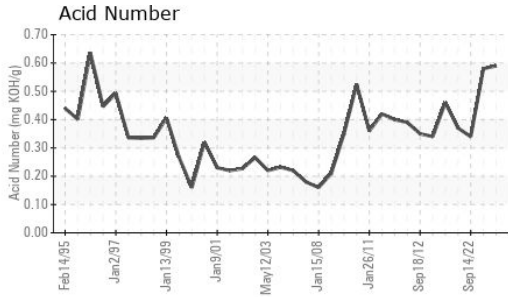
	method	limit/base	current	history1	history2
Silicon	ppm	ASTM D5185(m) >60	<b>35</b>	23	21
Sodium	ppm	ASTM D5185(m)	<b>&lt;1</b>	1	<1
Potassium	ppm	ASTM D5185(m) >20	<b>0</b>	1	<1

## FLUID DEGRADATION

	method	limit/base	current	history1	history2
Acid Number (AN)	mg KOH/g	ASTM D974*	<b>0.59</b>	0.58	0.34



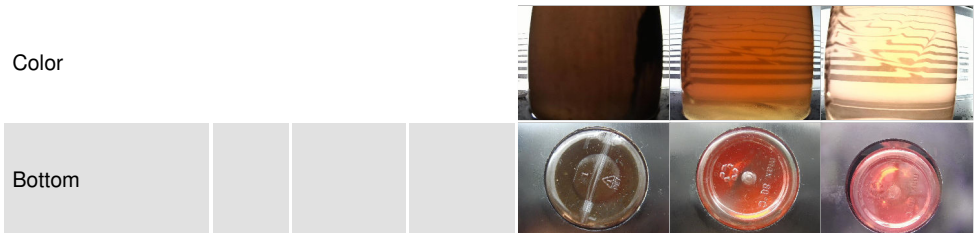
# OIL ANALYSIS REPORT



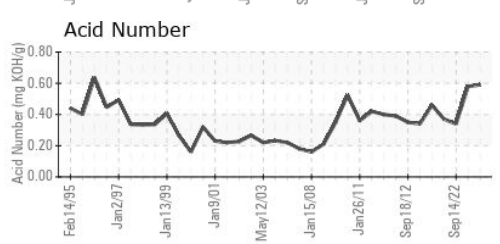
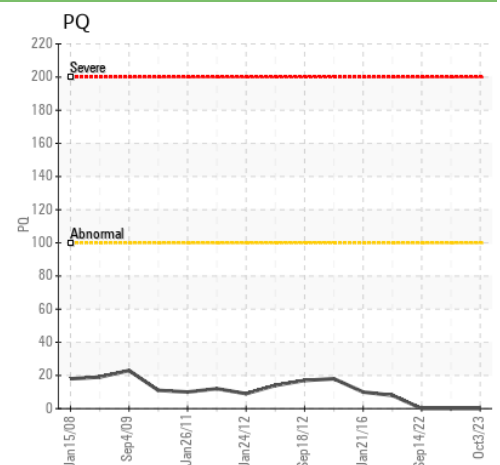
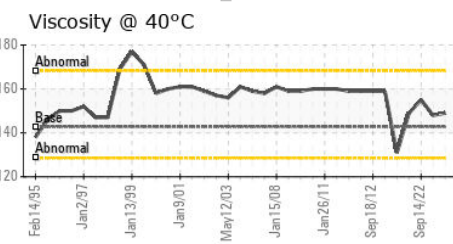
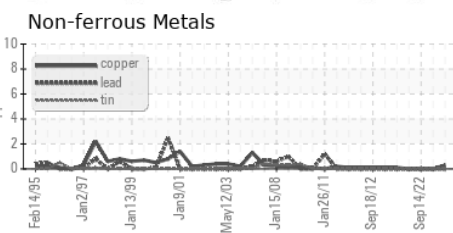
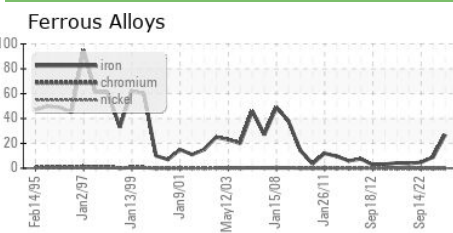
VISUAL	method	limit/base	current	history1	history2
White Metal	scalar	Visual*	NONE	NONE	NONE
Yellow Metal	scalar	Visual*	NONE	NONE	NONE
Precipitate	scalar	Visual*	NONE	NONE	NONE
Silt	scalar	Visual*	NONE	VLITE	NONE
Debris	scalar	Visual*	NONE	NONE	NONE
Sand/Dirt	scalar	Visual*	NONE	LIGHT	NONE
Appearance	scalar	Visual*	NORML	NORML	NORML
Odor	scalar	Visual*	NORML	NORML	NORML
Emulsified Water	scalar	Visual*	>0.2	NEG	NEG
Free Water	scalar	Visual*		NEG	NEG

FLUID PROPERTIES	method	limit/base	current	history1	history2
Visc @ 40°C	cSt	ASTM D7279(m)	142.8	149	148

SAMPLE IMAGES	method	limit/base	current	history1	history2
---------------	--------	------------	---------	----------	----------



## GRAPHS



**Laboratory** : WearCheck - C8-1175 Appleby Line, Burlington, ON L7L 5H9  
**Sample No.** : WC  
**Lab Number** : 02588035  
**Unique Number** : 5657101  
**Test Package** : IND 2 ( Additional Tests: TAN Man )  
**Received** : 10 Oct 2023  
**Diagnosed** : 10 Oct 2023  
**Diagnostician** : Wes Davis

**AV GROUP NB INC.**  
 103 PINDER ROAD,, NACKAWIC MILL  
 NACKAWIC, NB  
 CA E6G 1W4  
 Contact: Basil Fadulalla  
 basil.fadulalla@adityabirla.com

To discuss this sample report, contact Customer Service at 1-800-268-2131.  
 Test denoted (\*) outside scope of accreditation, (m) method modified, (e) tested at external lab.  
 Validity of results and interpretation are based on the sample and information as supplied.