

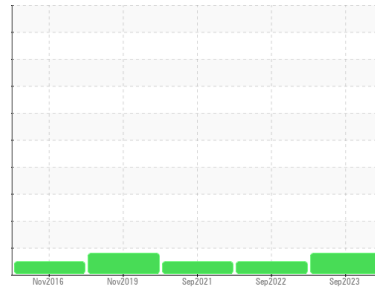


COOLANT REPORT

Sample Rating Trend

APPEARANCE

Area
DOUANE NOYAU [205695]
 Machine Id
CUMMINS GD10589D
 Component
Coolant
 Fluid
HYBRID (HOAT) COOLANT (--- GAL)



DIAGNOSIS

Recommendation

Nous recommandons que vous vidangiez le système et que vous le remplissiez avec un mélange 50/50 eau/antigel. Nous vous conseillons de reconstituer les additifs refroidisseurs supplémentaires, (SCA - supplemental coolant additives) et d'en ajouter selon les indications du fabricant. Échantillonner de nouveau l'équipement au prochain intervalle de vidange afin d'en surveiller la condition.

Corrosion

Les concentrations de tous les métaux sont normales indiquant qu'il n'y a pas de corrosion dans le système de refroidissement.

Contaminants

Il y a une légère concentration de la saleté et débris visible, présente dans l'agent de refroidissement.

Coolant Condition

The coolant is cloudy indicating either an overconcentration of coolant additives, or a mixing of incompatible coolant technologies. Le niveau de pH de ce fluide est dans les limites acceptables. La réserve d'alcalinité de ce fluide est acceptable.

SAMPLE INFORMATION

	method	limit/base	current	history1	history2
Sample Number	Client Info		GD0003984	GD0005828	GD0004991
Sample Date	Client Info		29 Sep 2023	27 Sep 2022	10 Sep 2021
Machine Age	hrs	Client Info	0	0	1604
Oil Age	hrs	Client Info	0	0	0
Oil Changed	Client Info		Not Changed	N/A	Not Changed
Sample Status			ABNORMAL	NORMAL	NORMAL

PHYSICAL TEST RESULTS

	method	limit/base	current	history1	history2
Specific Gravity	ASTM D1298*		1.067	1.064	1.071
pH	Scale 0-14	ASTM D1287*	8.10	8.87	9.00
Nitrites	ppm	Alcan Test Kit*	240	280	560
Reserve Alkalinity	Scale 0-20	ASTM D1121*	2.2	2.7	7.5
Percentage Glycol	%	ASTM D3321*	49.9	47.5	53.0
Freezing Point	°C	ASTM D3321*	-33	-28	-43
Carboxylate			---	---	---

CORROSION INHIBITORS

	method	limit/base	current	history1	history2
Silicon	ppm	ASTM D5185(m)	38	57	19
Phosphorus	ppm	ASTM D5185(m)	21	55	39
Boron	ppm	ASTM D5185(m)	16	8	22
Molybdenum	ppm	ASTM D5185(m)	21	62	185

CORROSION

	method	limit/base	current	history1	history2	
Iron	ppm	ASTM D5185(m)	>15	2	2	<1
Aluminum	ppm	ASTM D5185(m)	>10	0	1	3
Copper	ppm	ASTM D5185(m)	>10	0	2	<1
Lead	ppm	ASTM D5185(m)	>10	6	2	2
Tin	ppm	ASTM D5185(m)	>10	0	0	<1
Silver	ppm	ASTM D5185(m)	>10	<1	0	<1
Zinc	ppm	ASTM D5185(m)		0	1	<1

CARRIER SALTS

	method	limit/base	current	history1	history2
Sodium	ppm	ASTM D5185(m)	1333	1116	2434
Potassium	ppm	ASTM D5185(m)	2794	1594	925

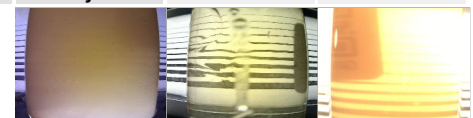
SCALE POTENTIAL

	method	limit/base	current	history1	history2	
Calcium	ppm	ASTM D5185(m)	>100	6	3	<1
Magnesium	ppm	ASTM D5185(m)	>40	1	2	1
Hardness	mg/L CaCO3	In-house*	<75	20	14	---

VISUAL

	method	limit/base	current	history1	history2
Coolant Color	Visual*		Yellow	Yellow	Yellow
Coolant Appearance	Visual*	Clear	▲ Very cld	Clear	Clear

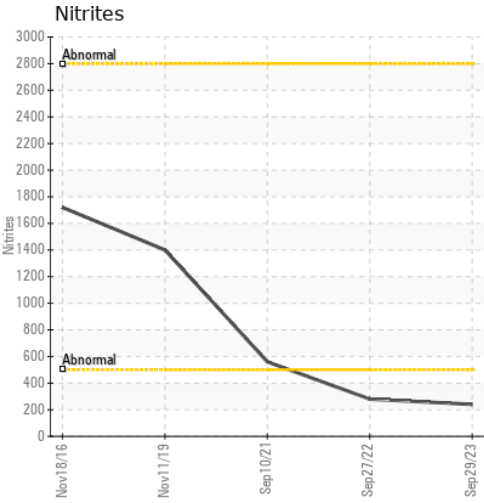
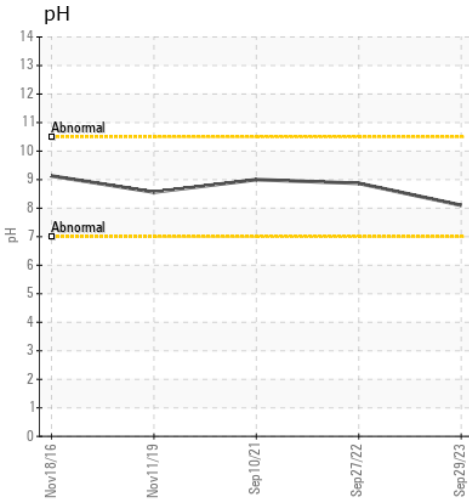
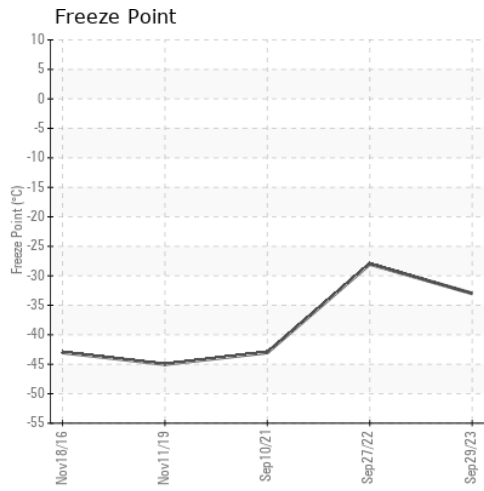
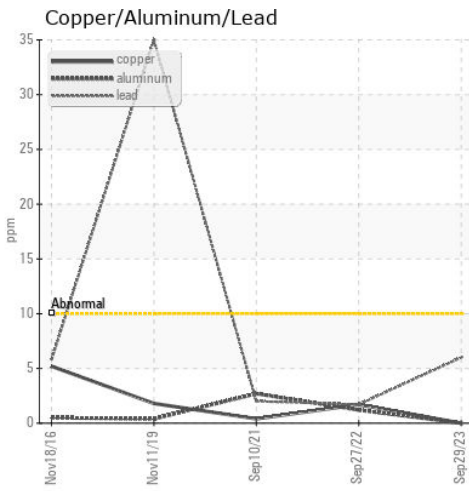
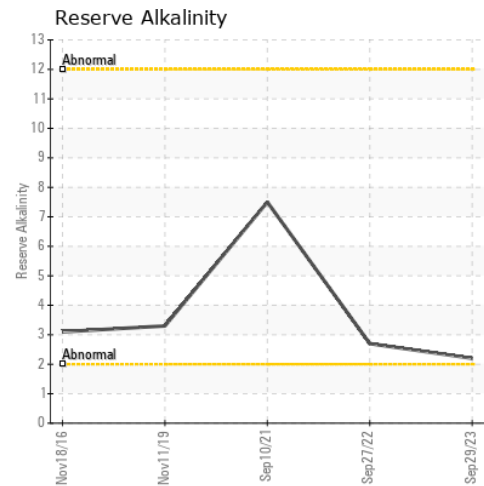
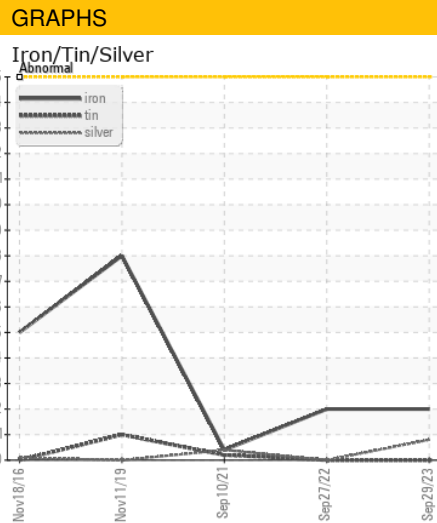
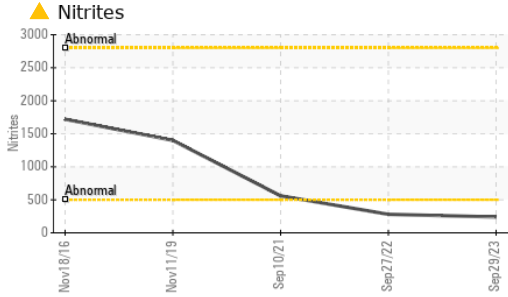
Color



Bottom



COOLANT REPORT



Laboratory : WearCheck - C8-1175 Appleby Line, Burlington, ON L7L 5H9
Sample No. : GD0003984
Lab Number : 02588415
Unique Number : 5657481
Test Package : COOL

Generatrice Drummond
 243 rue des ARTISANS
 SAINT-GERMAIN-DE-GRANTHAM, QC
 CA J0C 1K0
 Contact: Valerie Poirier
 poiirivalerie@generatricedrummond.com
 T: (819)398-6811
 F: (819)398-7022

To discuss this sample report, contact Customer Service at 1-800-268-2131.
 Test denoted (*) outside scope of accreditation, (m) method modified, (e) tested at external lab.
 Validity of results and interpretation are based on the sample and information as supplied.