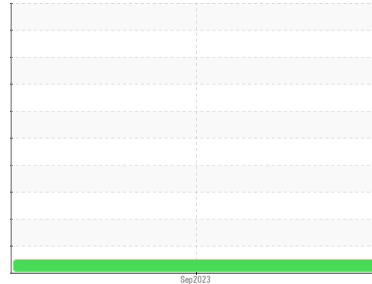


FUEL REPORT

Sample Rating Trend

NORMAL



Area
[198624]
Machine Id
MITSUBISHI GD5867

Component
Diesel Fuel
Fluid
No.2 DIESEL FUEL (ULTRALOW SULPHUR) (--- GAL)

DIAGNOSIS

Recommendation

Les tests de laboratoire indiquent que ce carburant peut être utilisé et qu'il répond à toutes les exigences. Échantillonner de nouveau l'équipement au prochain intervalle de vidange afin d'en surveiller la condition.

Corrosion

(sans objet)

Contaminants

La propreté du système est acceptable pour votre objectif de propreté ISO 4406. La teneur en eau est négligeable. Il n'y a aucun indice de contamination dans le carburant diesel.

Fuel Condition

Tous les essais en laboratoire indiquent que cet échantillon satisfait aux spécifications pour le carburant diesel à ultra-faible teneur de soufre No.2 (US EPA/CGSB-3.517-3 type B).

SAMPLE INFORMATION		method	limit/base	current	history1	history2
Sample Number	Client Info			WA0020125	---	---
Sample Date	Client Info			20 Sep 2023	---	---
Machine Age	hrs	Client Info		0	---	---
Sample Status				NORMAL	---	---

PHYSICAL PROPERTIES		method	limit/base	current	history1	history2
Specific Gravity		ASTM D1298*	0.839	0.817	---	---
Fuel Color	text	Visual Screen*	Yellow	Pink	---	---
Visc @ 40°C	cSt	ASTM D7279(m)	3.0	1.9	---	---
Pensky-Martens Flash Point	°C	ASTM D7215*	52	55.5	---	---

SULFUR CONTENT		method	limit/base	current	history1	history2
Sulfur	ppm	ASTM D5185(m)	10	8	---	---

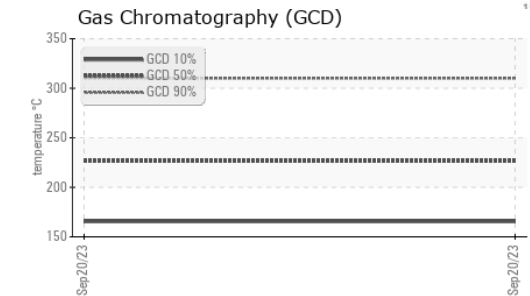
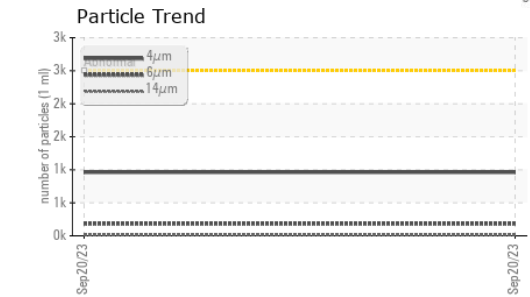
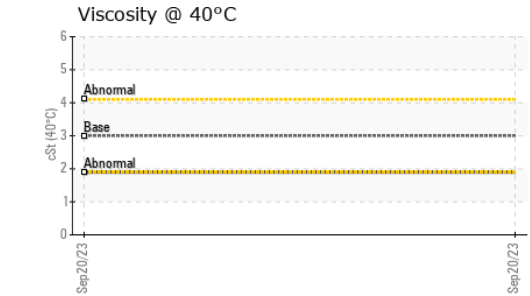
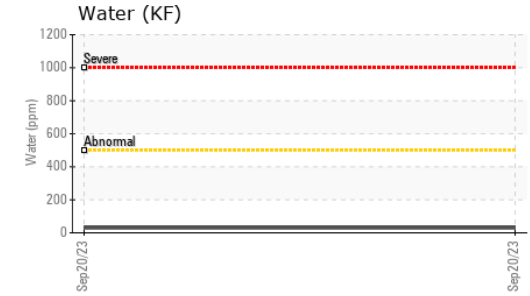
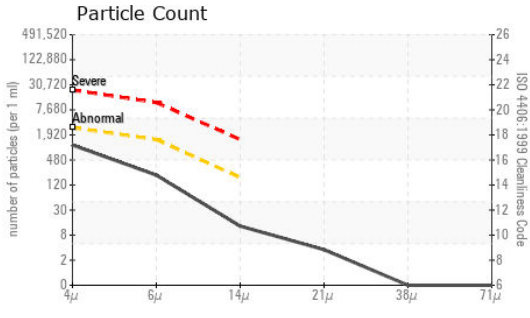
DISTILLATION		method	limit/base	current	history1	history2
Initial Boiling Point	°C	ASTM D2887*	165	164	---	---
5% Distillation Point	°C	ASTM D2887*		179	---	---
10% Distill Point	°C	ASTM D2887*	201	184	---	---
15% Distillation Point	°C	ASTM D2887*		189	---	---
20% Distill Point	°C	ASTM D2887*	216	195	---	---
30% Distill Point	°C	ASTM D2887*	230	204	---	---
40% Distill Point	°C	ASTM D2887*	243	215	---	---
50% Distill Point	°C	ASTM D2887*	255	225	---	---
60% Distill Point	°C	ASTM D2887*	267	237	---	---
70% Distill Point	°C	ASTM D2887*	280	250	---	---
80% Distill Point	°C	ASTM D2887*	295	267	---	---
85% Distillation Point	°C	ASTM D2887*		280	---	---
90% Distill Point	°C	ASTM D2887*	310	292	---	---
95% Distillation Point	°C	ASTM D2887*		313	---	---
Final Boiling Point	°C	ASTM D2887*	341	349	---	---

IGNITION QUALITY		method	limit/base	current	history1	history2
API Gravity		ASTM D1298*	37.7	41	---	---
Cetane Index		ASTM D4737*	<40.0	48	---	---

CONTAMINANTS		method	limit/base	current	history1	history2
Silicon	ppm	ASTM D5185(m)	<1.0	0	---	---
Sodium	ppm	ASTM D5185(m)	<0.1	0	---	---
Potassium	ppm	ASTM D5185(m)	<0.1	<1	---	---
Water	%	ASTM D6304*	<0.05	0.003	---	---
ppm Water	ppm	ASTM D6304*	<500	30.0	---	---

FLUID CLEANLINESS		method	limit/base	current	history1	history2
Particles >4µm		ASTM D7647	>2500	962	---	---
Particles >6µm		ASTM D7647	>1300	183	---	---
Particles >14µm		ASTM D7647	>160	11	---	---
Particles >21µm		ASTM D7647	>40	3	---	---
Particles >38µm		ASTM D7647	>10	0	---	---
Particles >71µm		ASTM D7647	>3	0	---	---
Oil Cleanliness		ISO 4406 (c)	>18/17/14	17/15/11	---	---

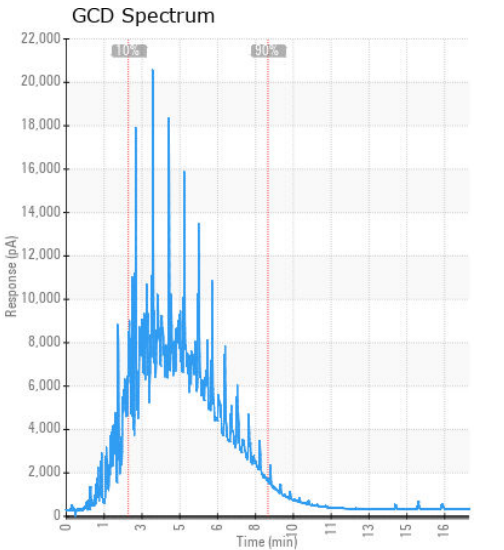
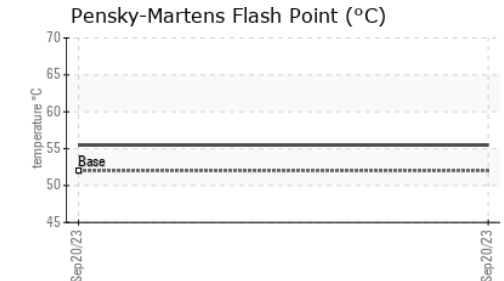
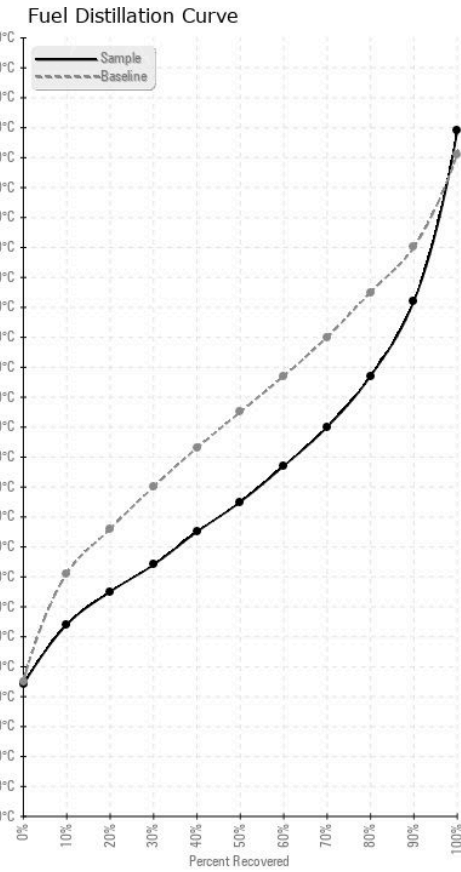
FUEL REPORT



HEAVY METALS	method	limit/base	current	history1	history2	
Aluminum	ppm	ASTM D5185(m)	<0.1	0	---	---
Nickel	ppm	ASTM D5185(m)	<0.1	0	---	---
Lead	ppm	ASTM D5185(m)	<0.1	0	---	---
Vanadium	ppm	ASTM D5185(m)	<0.1	0	---	---
Iron	ppm	ASTM D5185(m)	<0.1	<1	---	---
Calcium	ppm	ASTM D5185(m)	<0.1	<1	---	---
Magnesium	ppm	ASTM D5185(m)	<0.1	0	---	---
Phosphorus	ppm	ASTM D5185(m)	<0.1	0	---	---
Zinc	ppm	ASTM D5185(m)	<0.1	1	---	---

SAMPLE IMAGES	method	limit/base	current	history1	history2
Color				no image	no image
Bottom				no image	no image

GRAPHS



Laboratory : WearCheck - C8-1175 Appleby Line, Burlington, ON L7L 5H9
Sample No. : WA0020125
Lab Number : 02588434
Unique Number : 5657500
Test Package : FUEL (Additional Tests: CC Flash, GC-PercFuel, PrtCount)

Generatrice Drummond
 243 rue des ARTISANS
 SAINT-GERMAIN-DE-GRANTHAM, QC
 CA J0C 1K0
 Contact: Valerie Poirier
 poiervalerie@generatricedrummond.com
 T: (819)398-6811
 F: (819)398-7022

To discuss this sample report, contact Customer Service at 1-800-268-2131.
 Test denoted (*) outside scope of accreditation, (m) method modified, (e) tested at external lab.
 Validity of results and interpretation are based on the sample and information as supplied.