

# FUEL REPORT

Sample Rating Trend

**NORMAL**



Area  
**[198704]**  
Machine Id  
**MITSUBISHI GD5867C**

Component  
**Diesel Fuel**  
Fluid  
**No.1 DIESEL FUEL (ULTRALOW SULPHUR) (--- GAL)**



## DIAGNOSIS

### Recommendation

Les tests de laboratoire indiquent que ce carburant peut être utilisé et qu'il répond à toutes les exigences. Échantillonner de nouveau l'équipement au prochain intervalle de vidange afin d'en surveiller la condition.

### Corrosion

(sans objet)

### Contaminants

La propreté du système est acceptable pour votre objectif de propreté ISO 4406. La teneur en eau est négligeable. Il n'y a aucun indice de contamination dans le carburant diesel.

### Fuel Condition

Tous les essais en laboratoire indiquent que cet échantillon satisfait aux spécifications pour le carburant diesel à ultra-faible teneur de soufre No.1 (US EPA/CGSB-3.517-3 type A).

SAMPLE INFORMATION		method	limit/base	current	history1	history2
Sample Number	Client Info			<b>WA0019106</b>	---	---
Sample Date	Client Info			<b>22 Sep 2023</b>	---	---
Machine Age	hrs	Client Info		<b>0</b>	---	---
Sample Status				<b>NORMAL</b>	---	---

PHYSICAL PROPERTIES		method	limit/base	current	history1	history2
Specific Gravity		ASTM D1298*	0.825	<b>0.813</b>	---	---
Fuel Color	text	Visual Screen*	Clear	<b>Pink</b>	---	---
Visc @ 40°C	cSt	ASTM D7279(m)	1.8	<b>1.6</b>	---	---

SULFUR CONTENT		method	limit/base	current	history1	history2
Sulfur	ppm	ASTM D5185(m)	10	<b>7</b>	---	---

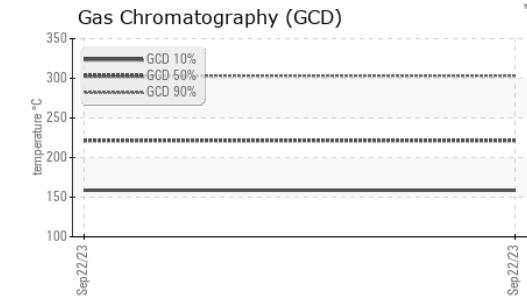
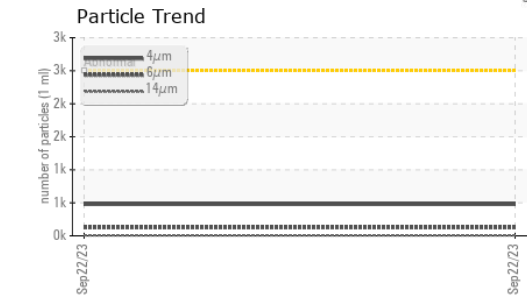
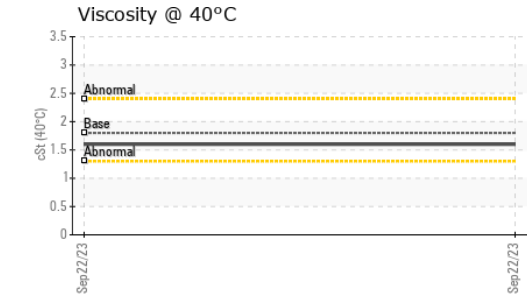
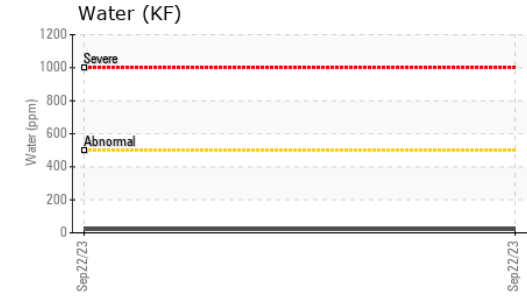
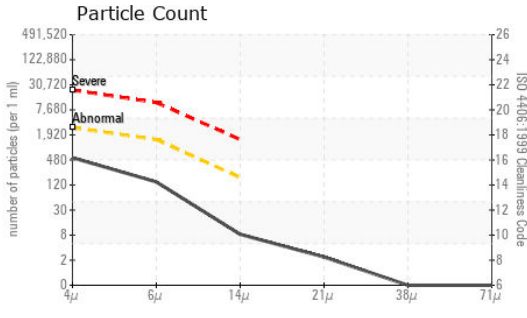
DISTILLATION		method	limit/base	current	history1	history2
Initial Boiling Point	°C	ASTM D2887*	159	<b>154</b>	---	---
5% Distillation Point	°C	ASTM D2887*		<b>172</b>	---	---
10% Distill Point	°C	ASTM D2887*	184	<b>177</b>	---	---
15% Distillation Point	°C	ASTM D2887*		<b>183</b>	---	---
20% Distill Point	°C	ASTM D2887*	196	<b>189</b>	---	---
30% Distill Point	°C	ASTM D2887*	205	<b>198</b>	---	---
40% Distill Point	°C	ASTM D2887*	216	<b>210</b>	---	---
50% Distill Point	°C	ASTM D2887*	227	<b>221</b>	---	---
60% Distill Point	°C	ASTM D2887*	238	<b>233</b>	---	---
70% Distill Point	°C	ASTM D2887*	251	<b>245</b>	---	---
80% Distill Point	°C	ASTM D2887*	264	<b>262</b>	---	---
85% Distillation Point	°C	ASTM D2887*		<b>274</b>	---	---
90% Distill Point	°C	ASTM D2887*	288	<b>286</b>	---	---
95% Distillation Point	°C	ASTM D2887*		<b>306</b>	---	---
Final Boiling Point	°C	ASTM D2887*	309	<b>342</b>	---	---

IGNITION QUALITY		method	limit/base	current	history1	history2
API Gravity		ASTM D1298*	40.1	<b>42</b>	---	---
Cetane Index		ASTM D4737*	<40.0	<b>48</b>	---	---

CONTAMINANTS		method	limit/base	current	history1	history2
Silicon	ppm	ASTM D5185(m)	<1.0	<b>0</b>	---	---
Sodium	ppm	ASTM D5185(m)	<0.1	<b>&lt;1</b>	---	---
Potassium	ppm	ASTM D5185(m)	<0.1	<b>&lt;1</b>	---	---
Water	%	ASTM D6304*	<0.05	<b>0.002</b>	---	---
ppm Water	ppm	ASTM D6304*	<500	<b>21.6</b>	---	---

FLUID CLEANLINESS		method	limit/base	current	history1	history2
Particles >4µm		ASTM D7647	>2500	<b>478</b>	---	---
Particles >6µm		ASTM D7647	>1300	<b>126</b>	---	---
Particles >14µm		ASTM D7647	>160	<b>7</b>	---	---
Particles >21µm		ASTM D7647	>40	<b>2</b>	---	---
Particles >38µm		ASTM D7647	>10	<b>0</b>	---	---
Particles >71µm		ASTM D7647	>3	<b>0</b>	---	---
Oil Cleanliness		ISO 4406 (c)	>18/17/14	<b>16/14/10</b>	---	---

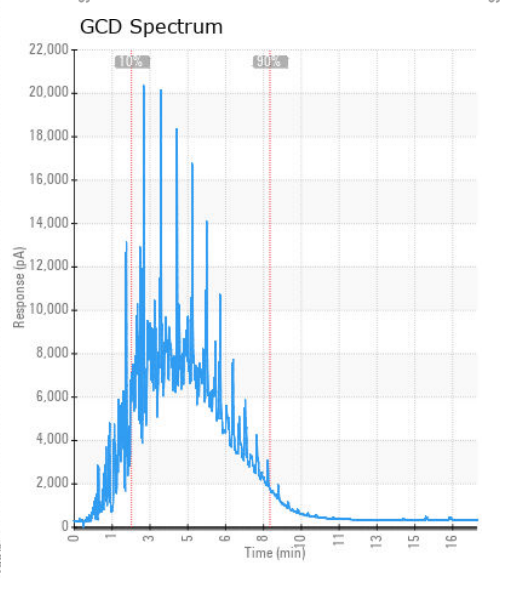
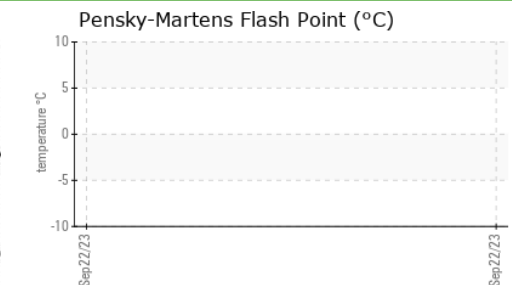
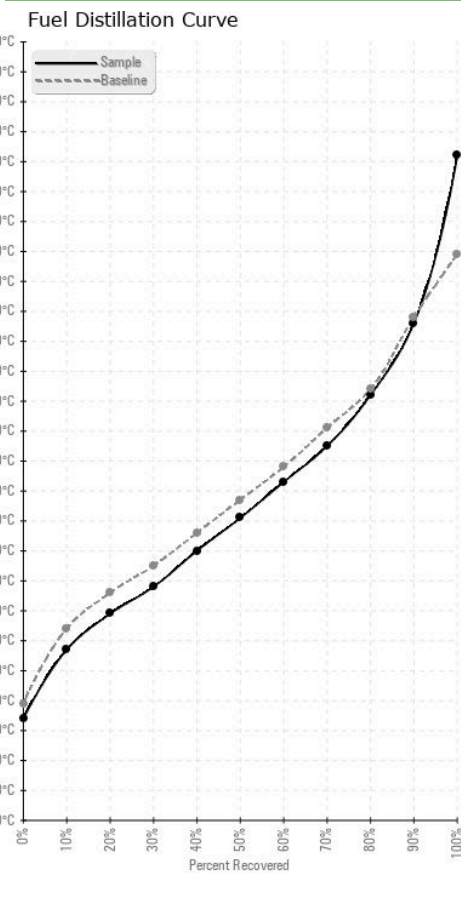
# FUEL REPORT



HEAVY METALS	method	limit/base	current	history1	history2
Aluminum	ppm	ASTM D5185(m)	<0.1	0	---
Nickel	ppm	ASTM D5185(m)	<0.1	0	---
Lead	ppm	ASTM D5185(m)	<1	---	---
Vanadium	ppm	ASTM D5185(m)	<0.1	0	---
Iron	ppm	ASTM D5185(m)	<0.1	<1	---
Calcium	ppm	ASTM D5185(m)	<0.1	0	---
Magnesium	ppm	ASTM D5185(m)	<0.1	0	---
Phosphorus	ppm	ASTM D5185(m)	<0.1	0	---
Zinc	ppm	ASTM D5185(m)	<0.1	<1	---

SAMPLE IMAGES	method	limit/base	current	history1	history2
Color				no image	no image
Bottom				no image	no image

## GRAPHS



**Laboratory** : WearCheck - C8-1175 Appleby Line, Burlington, ON L7L 5H9  
**Sample No.** : WA0019106  
**Lab Number** : 02588437  
**Unique Number** : 5657503  
**Test Package** : FUEL ( Additional Tests: CC Flash, GC-PercFuel, PrtCount )

**Received** : 11 Oct 2023  
**Diagnosed** : 19 Oct 2023  
**Diagnostician** : Kevin Marson

To discuss this sample report, contact Customer Service at 1-800-268-2131.  
 Test denoted (\*) outside scope of accreditation, (m) method modified, (e) tested at external lab.  
 Validity of results and interpretation are based on the sample and information as supplied.

**Generatrice Drummond**  
 243 rue des ARTISANS  
 SAINT-GERMAIN-DE-GRANTHAM, QC  
 CA J0C 1K0  
 Contact: Valerie Poirier  
 poiervalerie@generatricedrummond.com  
 T: (819)398-6811  
 F: (819)398-7022