



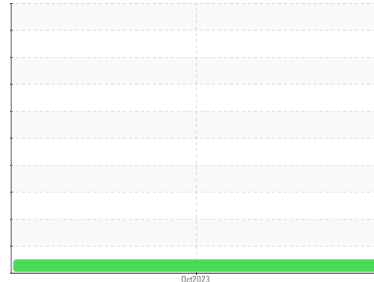
# FUEL REPORT

Sample Rating Trend

**NORMAL**



Area  
**[132364]**  
 Machine Id  
**WINDSOR FALMOUTH WATER**  
 Component  
**Diesel Fuel**  
 Fluid  
**No.2 DIESEL FUEL (LOW-SULPHUR) (--- GAL)**



## DIAGNOSIS

### Recommendation

Laboratory test indicate that this fuel is suitable for use and meets all test requirements. Resample at the next service interval to monitor.

### Corrosion

{not applicable}

### Contaminants

The system cleanliness is acceptable for your target ISO 4406 cleanliness code. The water content is negligible. There is no indication of any contamination in the diesel fuel.

### Fuel Condition

All laboratory tests indicate that this sample meets specifications for No.2 diesel fuel, low sulfur (US EPA/CGSB-3.517-3 type B).

## SAMPLE INFORMATION

method	limit/base	current	history1	history2
Sample Number	Client Info	<b>CU0021794</b>	---	---
Sample Date	Client Info	<b>10 Oct 2023</b>	---	---
Machine Age	hrs Client Info	<b>0</b>	---	---
Sample Status		<b>NORMAL</b>	---	---

## PHYSICAL PROPERTIES

method	limit/base	current	history1	history2	
Specific Gravity	ASTM D1298*	0.839	<b>0.844</b>	---	---
Fuel Color	text Visual Screen*	Yllow	<b>Orang</b>	---	---
Visc @ 40°C	cSt ASTM D7279(m)	3.0	<b>2.5</b>	---	---
Pensky-Martens Flash Point	°C ASTM D7215*	52	<b>71.2</b>	---	---

## SULFUR CONTENT

method	limit/base	current	history1	history2	
Sulfur	ppm ASTM D5185(m)	250	<b>19</b>	---	---

## DISTILLATION

method	limit/base	current	history1	history2	
Initial Boiling Point	°C ASTM D2887*	165	<b>183</b>	---	---
5% Distillation Point	°C ASTM D2887*		<b>200</b>	---	---
10% Distill Point	°C ASTM D2887*	201	<b>208</b>	---	---
15% Distillation Point	°C ASTM D2887*		<b>216</b>	---	---
20% Distill Point	°C ASTM D2887*	216	<b>223</b>	---	---
30% Distill Point	°C ASTM D2887*	230	<b>236</b>	---	---
40% Distill Point	°C ASTM D2887*	243	<b>247</b>	---	---
50% Distill Point	°C ASTM D2887*	255	<b>259</b>	---	---
60% Distill Point	°C ASTM D2887*	267	<b>271</b>	---	---
70% Distill Point	°C ASTM D2887*	280	<b>284</b>	---	---
80% Distill Point	°C ASTM D2887*	295	<b>299</b>	---	---
85% Distillation Point	°C ASTM D2887*		<b>310</b>	---	---
90% Distill Point	°C ASTM D2887*	310	<b>322</b>	---	---
95% Distillation Point	°C ASTM D2887*		<b>342</b>	---	---
Final Boiling Point	°C ASTM D2887*	341	<b>376</b>	---	---

## IGNITION QUALITY

method	limit/base	current	history1	history2	
API Gravity	ASTM D1298*	37.7	<b>36</b>	---	---
Cetane Index	ASTM D4737*	<40.0	<b>47</b>	---	---

## CONTAMINANTS

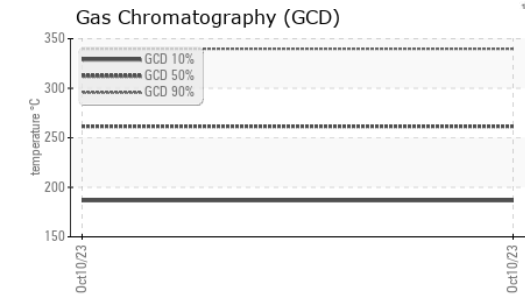
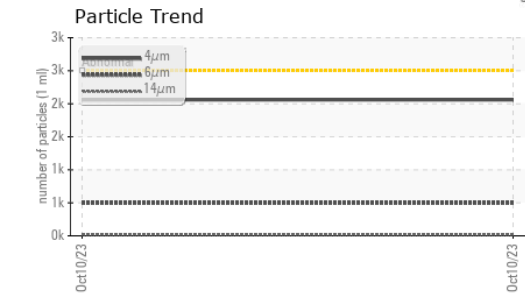
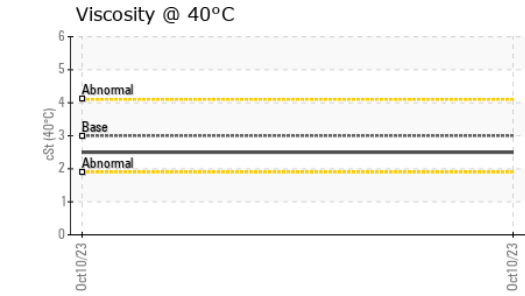
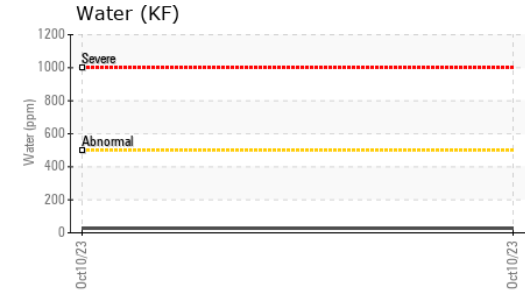
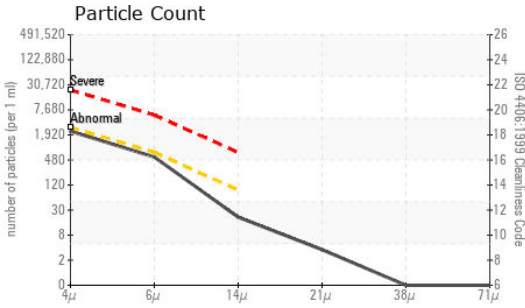
method	limit/base	current	history1	history2	
Silicon	ppm ASTM D5185(m)	<1.0	<b>0</b>	---	---
Sodium	ppm ASTM D5185(m)	<0.1	<b>0</b>	---	---
Potassium	ppm ASTM D5185(m)	<0.1	<b>&lt;1</b>	---	---
Water	% ASTM D6304*	<0.05	<b>0.003</b>	---	---
ppm Water	ppm ASTM D6304*	<500	<b>27.9</b>	---	---

## FLUID CLEANLINESS

method	limit/base	current	history1	history2	
Particles >4µm	ASTM D7647	>2500	<b>2059</b>	---	---
Particles >6µm	ASTM D7647	>640	<b>496</b>	---	---
Particles >14µm	ASTM D7647	>80	<b>18</b>	---	---
Particles >21µm	ASTM D7647	>20	<b>3</b>	---	---
Particles >38µm	ASTM D7647	>4	<b>0</b>	---	---
Particles >71µm	ASTM D7647	>3	<b>0</b>	---	---
Oil Cleanliness	ISO 4406 (c)	>18/16/13	<b>18/16/11</b>	---	---



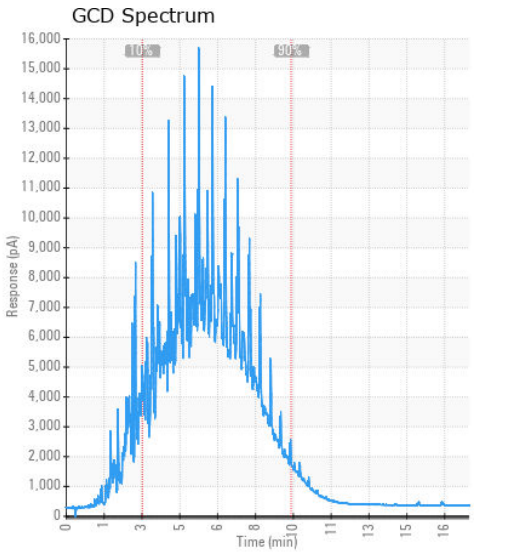
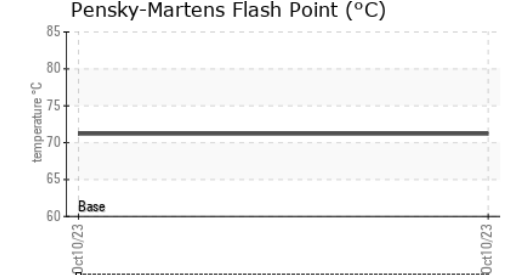
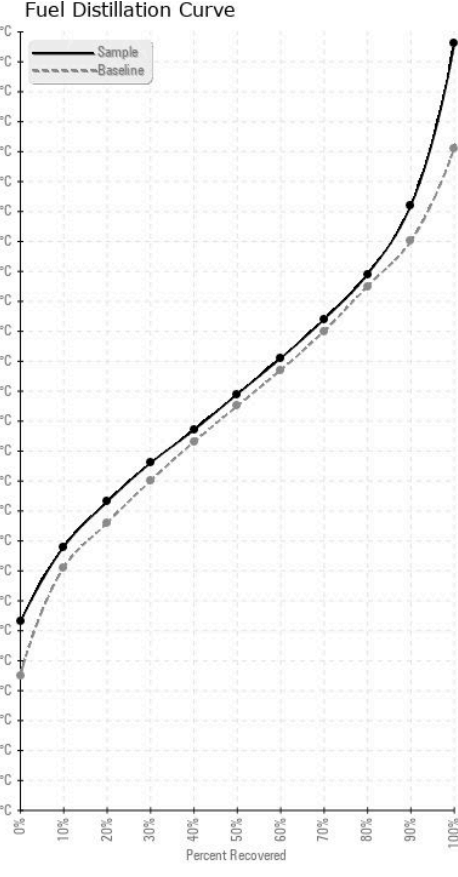
# FUEL REPORT



HEAVY METALS	method	limit/base	current	history1	history2	
Aluminum	ppm	ASTM D5185(m)	<0.1	0	---	---
Nickel	ppm	ASTM D5185(m)	<0.1	0	---	---
Lead	ppm	ASTM D5185(m)	<0.1	0	---	---
Vanadium	ppm	ASTM D5185(m)	<0.1	0	---	---
Iron	ppm	ASTM D5185(m)	<0.1	<1	---	---
Calcium	ppm	ASTM D5185(m)	<0.1	0	---	---
Magnesium	ppm	ASTM D5185(m)	<0.1	0	---	---
Phosphorus	ppm	ASTM D5185(m)	<0.1	0	---	---
Zinc	ppm	ASTM D5185(m)	<0.1	<1	---	---

SAMPLE IMAGES	method	limit/base	current	history1	history2
Color				no image	no image
Bottom				no image	no image

## GRAPHS



**Laboratory** : WearCheck - C8-1175 Appleby Line, Burlington, ON L7L 5H9  
**Sample No.** : CU0021794      **Received** : 11 Oct 2023  
**Lab Number** : 02588439      **Diagnosed** : 16 Oct 2023  
**Unique Number** : 5657505      **Diagnostician** : Kevin Marson  
**Test Package** : FUEL ( Additional Tests: CC Flash, GC-PercFuel, PrtCount )

To discuss this sample report, contact Customer Service at 1-800-268-2131.  
 Test denoted (\*) outside scope of accreditation, (m) method modified, (e) tested at external lab.  
 Validity of results and interpretation are based on the sample and information as supplied.

**CUMMINS DIESEL**  
 50 SIMMONDS DRIVE  
 DARTMOUTH, NS  
 CA B3B 1R3  
 Contact: Maurice Connolly  
 maurice.connolly@cummins.com  
 T: (902)468-7938  
 F: (902)468-5177