



# FUEL REPORT

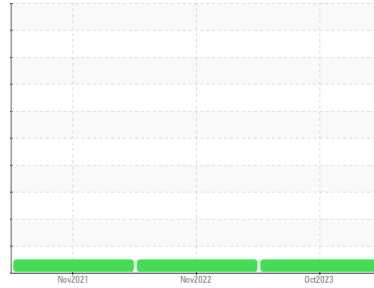
Sample Rating Trend

**NORMAL**



Area  
**[99879]**  
Machine Id  
**NDMC (S/N 73956688)**

Component  
**Diesel Fuel**  
Fluid  
**No.2 DIESEL FUEL (LOW-SULPHUR) (--- GAL)**



## DIAGNOSIS

### Recommendation

Laboratory test indicate that this fuel is suitable for use and meets all test requirements. Resample at the next service interval to monitor.

### Corrosion

{not applicable}

### Contaminants

The system cleanliness is acceptable for your target ISO 4406 cleanliness code. The water content is negligible. There is no indication of any contamination in the diesel fuel.

### Fuel Condition

All laboratory tests indicate that this sample meets specifications for No.2 diesel fuel, low sulfur (US EPA/CGSB-3.517-3 type B).

SAMPLE INFORMATION		method	limit/base	current	history1	history2
Sample Number	Client Info			<b>CU0020765</b>	CU0019861	CU0018649
Sample Date	Client Info			<b>10 Oct 2023</b>	16 Nov 2022	09 Nov 2021
Machine Age	hrs	Client Info		<b>209</b>	200	188
Sample Status				<b>NORMAL</b>	NORMAL	NORMAL

PHYSICAL PROPERTIES		method	limit/base	current	history1	history2
Specific Gravity		ASTM D1298*	0.839	<b>0.820</b>	0.820	0.836
Fuel Color	text	Visual Screen*	Yllow	<b>Pink</b>	Pink	Pink
Visc @ 40°C	cSt	ASTM D7279(m)	3.0	<b>2.3</b>	2	2.2
Pensky-Martens Flash Point	°C	ASTM D7215*	52	<b>66.7</b>	54.8	52.3

SULFUR CONTENT		method	limit/base	current	history1	history2
Sulfur	ppm	ASTM D5185(m)	250	<b>21</b>	22	20

DISTILLATION		method	limit/base	current	history1	history2
Initial Boiling Point	°C	ASTM D2887*	165	<b>177</b>	163	155
5% Distillation Point	°C	ASTM D2887*		<b>193</b>	184	175
10% Distill Point	°C	ASTM D2887*	201	<b>201</b>	194	188
15% Distillation Point	°C	ASTM D2887*		<b>208</b>	202	196
20% Distill Point	°C	ASTM D2887*	216	<b>215</b>	210	205
30% Distill Point	°C	ASTM D2887*	230	<b>230</b>	226	220
40% Distill Point	°C	ASTM D2887*	243	<b>244</b>	241	236
50% Distill Point	°C	ASTM D2887*	255	<b>258</b>	256	252
60% Distill Point	°C	ASTM D2887*	267	<b>270</b>	269	267
70% Distill Point	°C	ASTM D2887*	280	<b>283</b>	282	281
80% Distill Point	°C	ASTM D2887*	295	<b>297</b>	296	294
85% Distillation Point	°C	ASTM D2887*		<b>309</b>	306	302
90% Distill Point	°C	ASTM D2887*	310	<b>321</b>	316	314
95% Distillation Point	°C	ASTM D2887*		<b>342</b>	335	334
Final Boiling Point	°C	ASTM D2887*	341	<b>377</b>	356	347

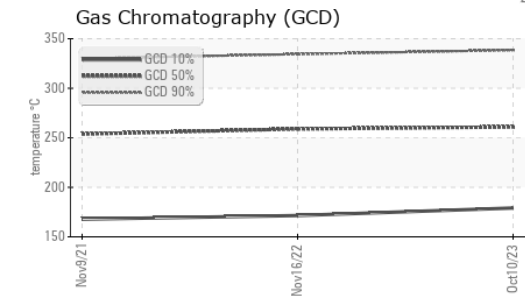
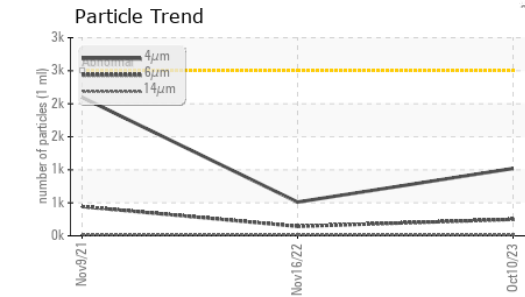
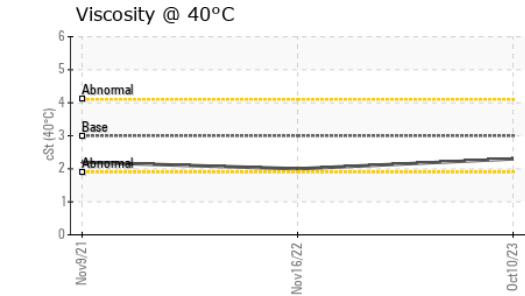
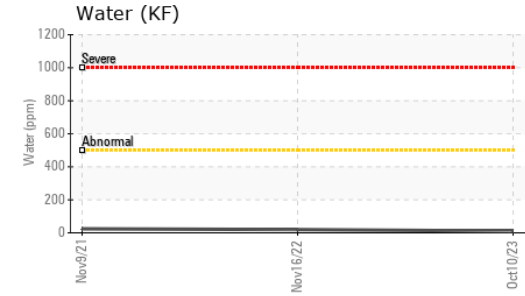
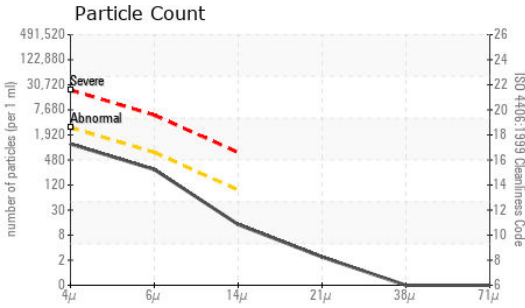
IGNITION QUALITY		method	limit/base	current	history1	history2
API Gravity		ASTM D1298*	37.7	<b>41</b>	41	37
Cetane Index		ASTM D4737*	<40.0	<b>56</b>	55	47

CONTAMINANTS		method	limit/base	current	history1	history2
Silicon	ppm	ASTM D5185(m)	<1.0	<b>0</b>	0	0
Sodium	ppm	ASTM D5185(m)	<0.1	<b>0</b>	<1	<1
Potassium	ppm	ASTM D5185(m)	<0.1	<b>&lt;1</b>	0	0
Water	%	ASTM D6304*	<0.05	<b>0.001</b>	0.002	0.002
ppm Water	ppm	ASTM D6304*	<500	<b>10.7</b>	19.7	24.4

FLUID CLEANLINESS		method	limit/base	current	history1	history2
Particles >4µm		ASTM D7647	>2500	<b>1020</b>	511	2098
Particles >6µm		ASTM D7647	>640	<b>249</b>	143	442
Particles >14µm		ASTM D7647	>80	<b>12</b>	15	16
Particles >21µm		ASTM D7647	>20	<b>2</b>	4	3
Particles >38µm		ASTM D7647	>4	<b>0</b>	0	0
Particles >71µm		ASTM D7647	>3	<b>0</b>	0	0
Oil Cleanliness		ISO 4406 (c)	>18/16/13	<b>17/15/11</b>	16/14/11	18/16/11



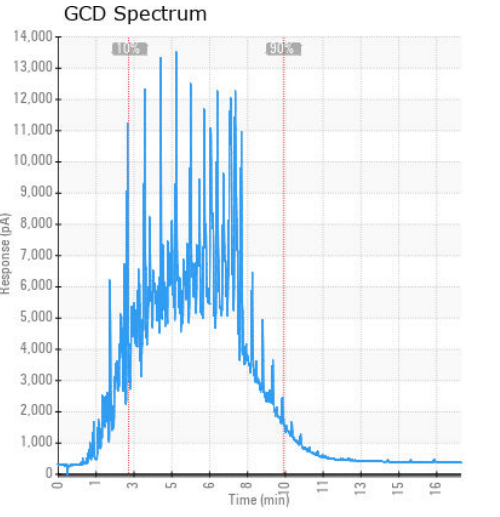
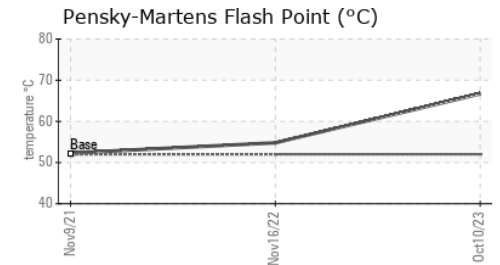
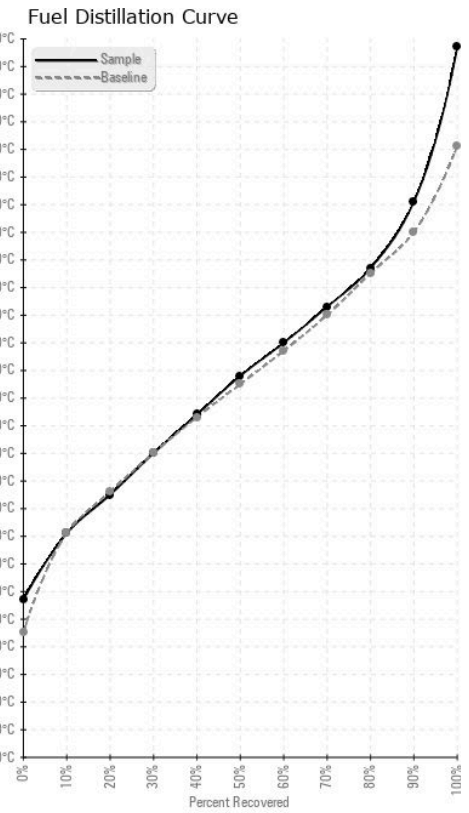
# FUEL REPORT



HEAVY METALS	method	limit/base	current	history1	history2
Aluminum	ppm	ASTM D5185(m)	<0.1	0	0
Nickel	ppm	ASTM D5185(m)	<0.1	0	0
Lead	ppm	ASTM D5185(m)	<0.1	0	<1
Vanadium	ppm	ASTM D5185(m)	<0.1	0	0
Iron	ppm	ASTM D5185(m)	<0.1	<1	<1
Calcium	ppm	ASTM D5185(m)	<0.1	<1	0
Magnesium	ppm	ASTM D5185(m)	<0.1	0	<1
Phosphorus	ppm	ASTM D5185(m)	<0.1	0	0
Zinc	ppm	ASTM D5185(m)	<0.1	<1	0

SAMPLE IMAGES	method	limit/base	current	history1	history2
Color					
Bottom					

## GRAPHS



**Laboratory** : WearCheck - C8-1175 Appleby Line, Burlington, ON L7L 5H9  
**Sample No.** : CU0020765  
**Lab Number** : 02588441  
**Unique Number** : 5657507  
**Test Package** : FUEL ( Additional Tests: CC Flash, GC-PercFuel, PrtCount )

**CUMMINS EASTERN CANADA LP**  
 3189 SWANSEA CRESCENT  
 OTTAWA, ON  
 CA K1G 3W5  
 Contact: Cindy Harrison  
 cindy.harrison@cummins.com  
 T: (613)736-1146  
 F: x:

To discuss this sample report, contact Customer Service at 1-800-268-2131.  
 Test denoted (\*) outside scope of accreditation, (m) method modified, (e) tested at external lab.  
 Validity of results and interpretation are based on the sample and information as supplied.