



# OIL ANALYSIS REPORT

Sample Rating Trend

**NORMAL**



Area  
**(C-GSKA)**  
Machine Id  
**BEECHCRAFT PCE-32494**  
Component  
**Left Gearbox**  
Fluid  
**EASTMAN TURBO OIL 2380 (18 LTR)**

## DIAGNOSIS

### Recommendation

Resample at the next service interval to monitor.

### Wear

The filter contained no appreciable wear particles. All filter wear levels are normal.

### Contamination

The filter contained only normal levels of contaminants, and debris. All filter contaminant levels are normal.

### Fluid Condition

The AN level is acceptable for this fluid. The condition of the oil is suitable for further service.

## SAMPLE INFORMATION

	method	limit/base	current	history1	history2
Sample Number	Client Info		<b>WC0766989</b>	---	---
Sample Date	Client Info		<b>07 Oct 2023</b>	---	---
TSN	hrs	Client Info	<b>37186</b>	---	---
TSO	hrs	Client Info	<b>0</b>	---	---
Oil Age	hrs	Client Info	<b>0</b>	---	---
Oil Changed		Client Info	<b>N/A</b>	---	---
Sample Status			<b>NORMAL</b>	---	---

## WEAR METALS

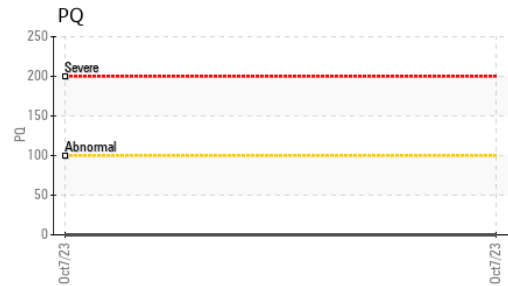
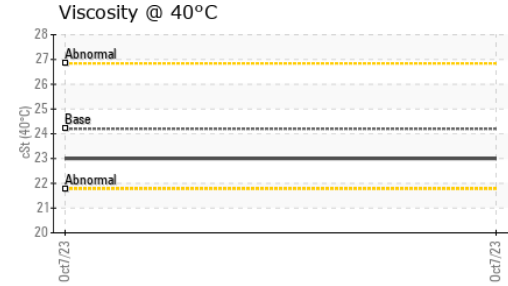
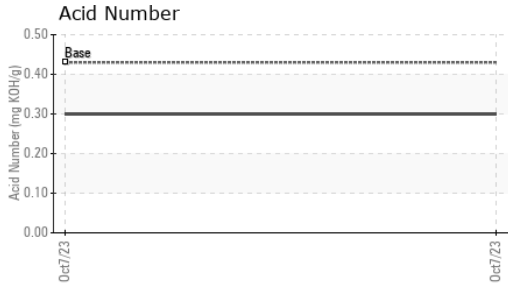
	method	limit/base	current	history1	history2
PQ	ASTM D8184*		<b>0</b>	---	---
Iron	ppm	ASTM D5185(m) >30	<b>1</b>	---	---
Chromium	ppm	ASTM D5185(m) >4	<b>0</b>	---	---
Nickel	ppm	ASTM D5185(m) >5	<b>&lt;1</b>	---	---
Titanium	ppm	ASTM D5185(m)	<b>0</b>	---	---
Silver	ppm	ASTM D5185(m) >5	<b>&lt;1</b>	---	---
Aluminum	ppm	ASTM D5185(m) >8	<b>&lt;1</b>	---	---
Lead	ppm	ASTM D5185(m) >10	<b>0</b>	---	---
Copper	ppm	ASTM D5185(m) >8	<b>&lt;1</b>	---	---
Tin	ppm	ASTM D5185(m) >4	<b>0</b>	---	---
Antimony	ppm	ASTM D5185(m) >5	<b>0</b>	---	---
Vanadium	ppm	ASTM D5185(m)	<b>0</b>	---	---
Beryllium	ppm	ASTM D5185(m)	<b>0</b>	---	---
Cadmium	ppm	ASTM D5185(m)	<b>0</b>	---	---

## FERROGRAPHY

	method	limit/base	current	history1	history2
Ferrous Rubbing	Scale 0-10	ASTM D7684*	<b>1</b>		
Ferrous Sliding	Scale 0-10	ASTM D7684*			
Ferrous Cutting	Scale 0-10	ASTM D7684*			
Ferrous Rolling	Scale 0-10	ASTM D7684*			
Ferrous Break-in	Scale 0-10	ASTM D7684*			
Ferrous Spheres	Scale 0-10	ASTM D7684*			
Ferrous Black Oxides	Scale 0-10	ASTM D7684*			
Ferrous Red Oxides	Scale 0-10	ASTM D7684*			
Ferrous Corrosive	Scale 0-10	ASTM D7684*			
Ferrous Other	Scale 0-10	ASTM D7684*			
Nonferrous Rubbing	Scale 0-10	ASTM D7684*			
Nonferrous Sliding	Scale 0-10	ASTM D7684*			
Nonferrous Cutting	Scale 0-10	ASTM D7684*			
Nonferrous Rolling	Scale 0-10	ASTM D7684*			
Nonferrous Other	Scale 0-10	ASTM D7684*			
Sand/Dirt	Scale 0-10	ASTM D7684*	<b>2</b>		
Fibres	Scale 0-10	ASTM D7684*	<b>1</b>		
Spheres	Scale 0-10	ASTM D7684*			
Other	Scale 0-10	ASTM D7684*			
Patch Weight	mg	ASTM D7684*	<b>35</b>	---	---



# OIL ANALYSIS REPORT



ADDITIVES	method	limit/base	current	history1	history2
Boron	ppm	ASTM D5185(m) 0	<1	---	---
Barium	ppm	ASTM D5185(m) 0	0	---	---
Molybdenum	ppm	ASTM D5185(m) 0	0	---	---
Manganese	ppm	ASTM D5185(m)	0	---	---
Magnesium	ppm	ASTM D5185(m) 0	0	---	---
Calcium	ppm	ASTM D5185(m) 0	0	---	---
Phosphorus	ppm	ASTM D5185(m) 2500	2669	---	---
Zinc	ppm	ASTM D5185(m) 0	<1	---	---
Sulfur	ppm	ASTM D5185(m) 0	2	---	---
Lithium	ppm	ASTM D5185(m)	<1	---	---

CONTAMINANTS	method	limit/base	current	history1	history2
Silicon	ppm	ASTM D5185(m) >10	0	---	---
Sodium	ppm	ASTM D5185(m)	<1	---	---
Potassium	ppm	ASTM D5185(m) >20	0	---	---

FLUID DEGRADATION	method	limit/base	current	history1	history2
Acid Number (AN)	mg KOH/g	ASTM D974* 0.43	0.30	---	---

VISUAL	method	limit/base	current	history1	history2
White Metal	scalar	Visual* NONE	NONE	---	---
Yellow Metal	scalar	Visual* NONE	NONE	---	---
Precipitate	scalar	Visual* NONE	NONE	---	---
Silt	scalar	Visual* NONE	NONE	---	---
Debris	scalar	Visual* NONE	NONE	---	---
Sand/Dirt	scalar	Visual* NONE	NONE	---	---
Appearance	scalar	Visual* NORML	NORML	---	---
Odor	scalar	Visual* NORML	NORML	---	---
Emulsified Water	scalar	Visual* >0.2	NEG	---	---
Free Water	scalar	Visual*	NEG	---	---

FLUID PROPERTIES	method	limit/base	current	history1	history2
Visc @ 40°C	cSt	ASTM D7279(m) 24.2	23.0	---	---

SAMPLE IMAGES	method	limit/base	current	history1	history2
---------------	--------	------------	---------	----------	----------

Color		no image	no image
Bottom		no image	no image



**Laboratory** : WearCheck - C8-1175 Appleby Line, Burlington, ON L7L 5H9  
**Sample No.** : WC0766989      **Received** : 12 Oct 2023  
**Lab Number** : 02588612      **Diagnosed** : 13 Oct 2023  
**Unique Number** : 5657678      **Diagnostician** : Bill Quesnel  
**Test Package** : AVI 2 ( Additional Tests: PQ )

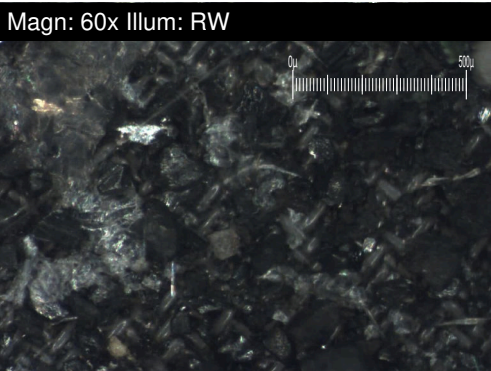
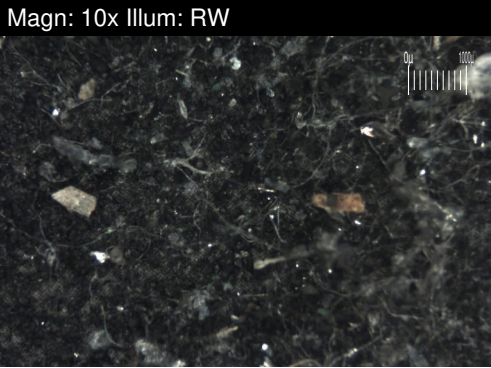
**SKYLINK EXPRESS**  
 9300 AIRPORT ROAD, HANGAR #4  
 MOUNT HOPE, ON  
 CA L0R 1W0  
 Contact: Morris Green  
 mgreen@skylinkepress.com  
 T: (905)679-4141  
 F: (506)388-2968

To discuss this sample report, contact Customer Service at 1-800-268-2131.  
 Test denoted (\*) outside scope of accreditation, (m) method modified, (e) tested at external lab.  
 Validity of results and interpretation are based on the sample and information as supplied.



# FILTER REPORT

Area  
**(C-GSKA)**  
 Machine Id  
**BEECHCRAFT PCE-32494**  
 Component  
**Left Gearbox**  
 Fluid  
**EASTMAN TURBO OIL 2380 (18 LTR)**



FERROGRAPHY	method	limit/base	current	history1	history2
Ferrous Rubbing	Scale 0-10 ASTM D7684*		1		
Ferrous Sliding	Scale 0-10 ASTM D7684*				
Ferrous Cutting	Scale 0-10 ASTM D7684*				
Ferrous Rolling	Scale 0-10 ASTM D7684*				
Ferrous Break-in	Scale 0-10 ASTM D7684*				
Ferrous Spheres	Scale 0-10 ASTM D7684*				
Ferrous Black Oxides	Scale 0-10 ASTM D7684*				
Ferrous Red Oxides	Scale 0-10 ASTM D7684*				
Ferrous Corrosive	Scale 0-10 ASTM D7684*				
Ferrous Other	Scale 0-10 ASTM D7684*				
Nonferrous Rubbing	Scale 0-10 ASTM D7684*				
Nonferrous Sliding	Scale 0-10 ASTM D7684*				
Nonferrous Cutting	Scale 0-10 ASTM D7684*				
Nonferrous Rolling	Scale 0-10 ASTM D7684*				
Nonferrous Other	Scale 0-10 ASTM D7684*				
Sand/Dirt	Scale 0-10 ASTM D7684*		2		
Fibres	Scale 0-10 ASTM D7684*		1		
Spheres	Scale 0-10 ASTM D7684*				
Other	Scale 0-10 ASTM D7684*				
Patch Weight	mg ASTM D7684*		35	---	---

## WEAR

The filter contained no appreciable wear particles. All filter wear levels are normal.

*This page left intentionally blank*