



FUEL REPORT

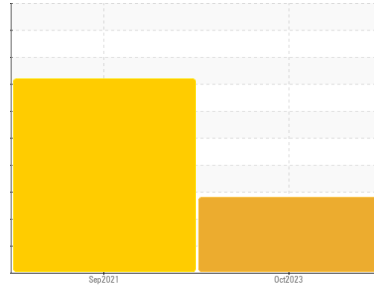
Sample Rating Trend

WEAR

Area
PP-Deslandes Inc [328371]
Machine Id
85008336

Component
Diesel Fuel
Fluid

No.2 DIESEL FUEL (ULTRALOW SULPHUR) (--- GAL)



DIAGNOSIS

Recommendation

Nous vous recommandons de filtrer ce fluide avant de l'utiliser. Nous recommandons le remplacement des filtres de ce composant. Nous vous recommandons d'échantillonner de nouveau dès que possible afin de contrôler la situation.

Corrosion

La concentration des métaux est élevée indiquant la présence de corrosion dans le système.

Contaminants

Il y a une quantité modérée de particules (de 4 à 14 microns) dans le carburant. La teneur en eau est négligeable.

Fuel Condition

Les niveaux d'additifs indiquent l'ajout d'une autre marque ou d'un autre type d'huile. le carburant peut encore servir si la contamination peut être réduite à un niveau acceptable.

SAMPLE INFORMATION

method	limit/base	current	history1	history2
Sample Number	Client Info	CU0021995	CU0018020	---
Sample Date	Client Info	11 Oct 2023	29 Sep 2021	---
Machine Age	hrs	0	0	---
Sample Status		ABNORMAL	SEVERE	---

PHYSICAL PROPERTIES

method	limit/base	current	history1	history2		
Specific Gravity	ASTM D1298*	0.839	0.822	0.837	---	
Fuel Color	text	Visual Screen*	Yellow	Yellow	---	
Visc @ 40°C	cSt	ASTM D7279(m)	3.0	2.6	2.2	---
Pensky-Martens Flash Point	°C	ASTM D7215*	52	57.9	---	---

SULFUR CONTENT

method	limit/base	current	history1	history2		
Sulfur	ppm	ASTM D5185(m)	10	8	11	---

DISTILLATION

method	limit/base	current	history1	history2		
Initial Boiling Point	°C	ASTM D2887*	165	168	155	---
5% Distillation Point	°C	ASTM D2887*		192	173	---
10% Distill Point	°C	ASTM D2887*	201	203	183	---
15% Distillation Point	°C	ASTM D2887*		211	190	---
20% Distill Point	°C	ASTM D2887*	216	220	200	---
30% Distill Point	°C	ASTM D2887*	230	237	216	---
40% Distill Point	°C	ASTM D2887*	243	252	231	---
50% Distill Point	°C	ASTM D2887*	255	267	247	---
60% Distill Point	°C	ASTM D2887*	267	279	263	---
70% Distill Point	°C	ASTM D2887*	280	290	279	---
80% Distill Point	°C	ASTM D2887*	295	302	297	---
85% Distillation Point	°C	ASTM D2887*		313	309	---
90% Distill Point	°C	ASTM D2887*	310	324	322	---
95% Distillation Point	°C	ASTM D2887*		348	341	---
Final Boiling Point	°C	ASTM D2887*	341	385	▲ 362	---

IGNITION QUALITY

method	limit/base	current	history1	history2	
API Gravity	ASTM D1298*	37.7	40	37	---
Cetane Index	ASTM D4737*	<40.0	57	46	---

CONTAMINANTS

method	limit/base	current	history1	history2		
Silicon	ppm	ASTM D5185(m)	<1.0	0	0	---
Sodium	ppm	ASTM D5185(m)	<0.1	0	<1	---
Potassium	ppm	ASTM D5185(m)	<0.1	<1	0	---
Water	%	ASTM D6304*	<0.05	0.002	0.002	---
ppm Water	ppm	ASTM D6304*	<500	24.5	24.1	---

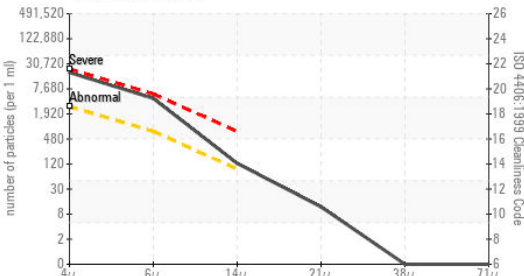
FLUID CLEANLINESS

method	limit/base	current	history1	history2	
Particles >4µm	ASTM D7647	>2500	▲ 16479	▲ 18382	---
Particles >6µm	ASTM D7647	>640	▲ 3945	▲ 3212	---
Particles >14µm	ASTM D7647	>80	▲ 110	46	---
Particles >21µm	ASTM D7647	>20	10	4	---
Particles >38µm	ASTM D7647	>4	0	0	---
Particles >71µm	ASTM D7647	>3	0	0	---
Oil Cleanliness	ISO 4406 (c)	>18/16/13	▲ 21/19/14	▲ 21/19/13	---

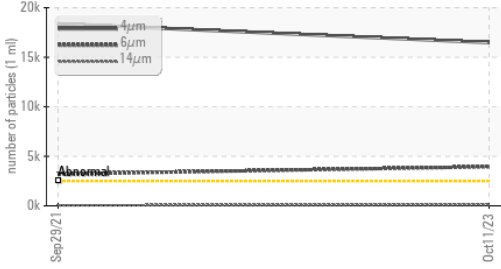


FUEL REPORT

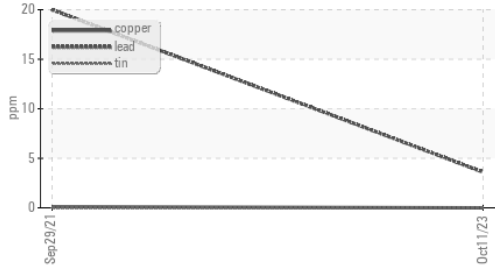
Particle Count



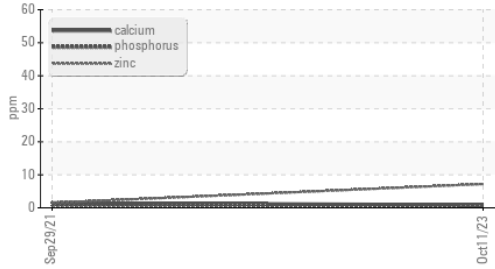
Particle Trend



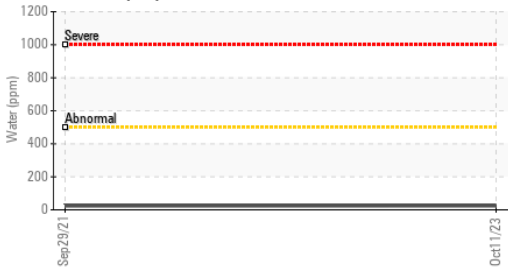
Non-ferrous Metals



Additives



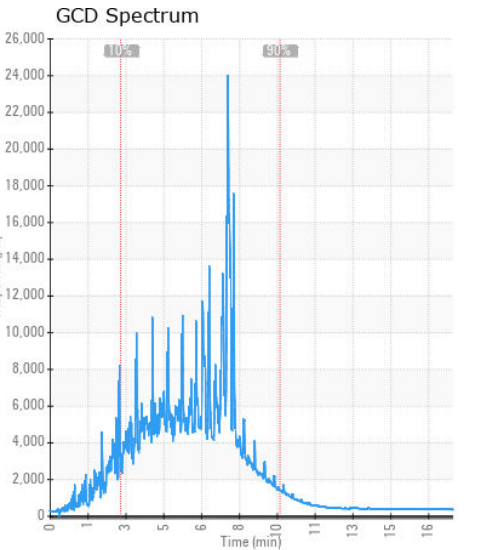
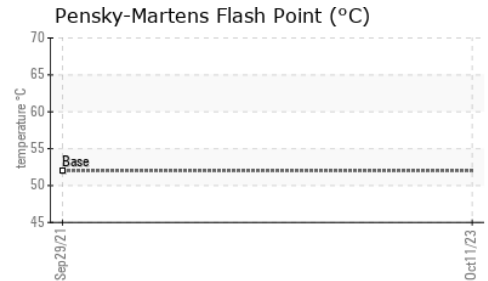
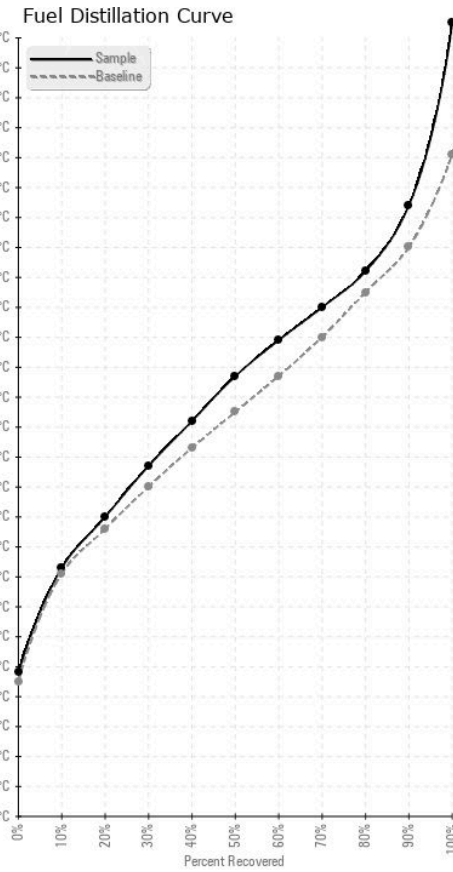
Water (KF)



HEAVY METALS	method	limit/base	current	history1	history2
Aluminum	ppm	ASTM D5185(m)	<0.1	0	---
Nickel	ppm	ASTM D5185(m)	<0.1	0	---
Lead	ppm	ASTM D5185(m)	▲ 4	◆ 20	---
Vanadium	ppm	ASTM D5185(m)	<0.1	0	---
Iron	ppm	ASTM D5185(m)	<0.1	<1	---
Calcium	ppm	ASTM D5185(m)	<0.1	<1	2
Magnesium	ppm	ASTM D5185(m)	<0.1	<1	---
Phosphorus	ppm	ASTM D5185(m)	<0.1	<1	---
Zinc	ppm	ASTM D5185(m)	▲ 7	2	---

SAMPLE IMAGES	method	limit/base	current	history1	history2
Color					no image
Bottom					no image

GRAPHS



Laboratory : WearCheck - C8-1175 Appleby Line, Burlington, ON L7L 5H9
Sample No. : CU0021995 **Received** : 12 Oct 2023
Lab Number : 02588766 **Diagnosed** : 16 Oct 2023
Unique Number : 5657832 **Diagnostician** : Kevin Marson
Test Package : FUEL (Additional Tests: CC Flash, GC-PercFuel, PrtCount)

CUMMINS EASTERN CANADA LP
 315 AV LIBERTE
 CANDIAC, QC
 CA J5R 6Z7
 Contact: Thomas Owens
 is275@cummins.com
 T: (450)638-6863
 F: (450)638-1202

To discuss this sample report, contact Customer Service at 1-800-268-2131.
 Test denoted (*) outside scope of accreditation, (m) method modified, (e) tested at external lab.
 Validity of results and interpretation are based on the sample and information as supplied.