



# OIL ANALYSIS REPORT

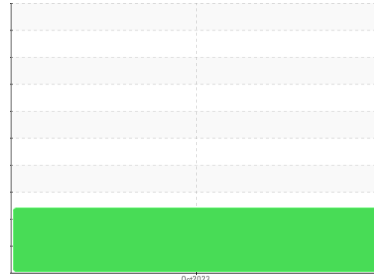
Sample Rating Trend

VISUAL METAL

Machine Id  
**M01535 (S/N OFTX30023D006)**

Component  
**Hydraulic System**

Fluid  
**PETRO CANADA HYDREX XV ALL SEASON HYDRAULIC OIL (--- GAL)**



## DIAGNOSIS

### Recommendation

We advise that you check for visible metal particles in the oil. We recommend you service the filters on this component. We recommend an early resample to monitor this condition.

### Wear

Light concentration of visible metal present.

### Contamination

There is a moderate amount of silt (particulates < 14 microns in size) present in the oil.

### Fluid Condition

The condition of the oil is acceptable for the time in service.

## SAMPLE INFORMATION

method	limit/base	current	history1	history2
Sample Number	Client Info	<b>WC0848413</b>	---	---
Sample Date	Client Info	<b>04 Oct 2023</b>	---	---
Machine Age	hrs	Client Info	<b>0</b>	---
Oil Age	hrs	Client Info	<b>0</b>	---
Oil Changed	Client Info	<b>N/A</b>	---	---
Sample Status		<b>ABNORMAL</b>	---	---

## WEAR METALS

method	limit/base	current	history1	history2		
Iron	ppm	ASTM D5185(m)	>20	<1	---	---
Chromium	ppm	ASTM D5185(m)	>20	0	---	---
Nickel	ppm	ASTM D5185(m)	>20	<1	---	---
Titanium	ppm	ASTM D5185(m)		0	---	---
Silver	ppm	ASTM D5185(m)		<1	---	---
Aluminum	ppm	ASTM D5185(m)	>20	<1	---	---
Lead	ppm	ASTM D5185(m)	>20	<1	---	---
Copper	ppm	ASTM D5185(m)	>20	<1	---	---
Tin	ppm	ASTM D5185(m)	>20	0	---	---
Antimony	ppm	ASTM D5185(m)		0	---	---
Vanadium	ppm	ASTM D5185(m)		0	---	---
Beryllium	ppm	ASTM D5185(m)		0	---	---
Cadmium	ppm	ASTM D5185(m)		0	---	---

## ADDITIVES

method	limit/base	current	history1	history2		
Boron	ppm	ASTM D5185(m)	0	<1	---	---
Barium	ppm	ASTM D5185(m)	0	<1	---	---
Molybdenum	ppm	ASTM D5185(m)	0	0	---	---
Manganese	ppm	ASTM D5185(m)	1	0	---	---
Magnesium	ppm	ASTM D5185(m)	0	<1	---	---
Calcium	ppm	ASTM D5185(m)	100	102	---	---
Phosphorus	ppm	ASTM D5185(m)	670	634	---	---
Zinc	ppm	ASTM D5185(m)	850	846	---	---
Sulfur	ppm	ASTM D5185(m)	1600	1508	---	---
Lithium	ppm	ASTM D5185(m)		<1	---	---

## CONTAMINANTS

method	limit/base	current	history1	history2		
Silicon	ppm	ASTM D5185(m)	>15	<1	---	---
Sodium	ppm	ASTM D5185(m)		<1	---	---
Potassium	ppm	ASTM D5185(m)	>20	<1	---	---

## FLUID CLEANLINESS

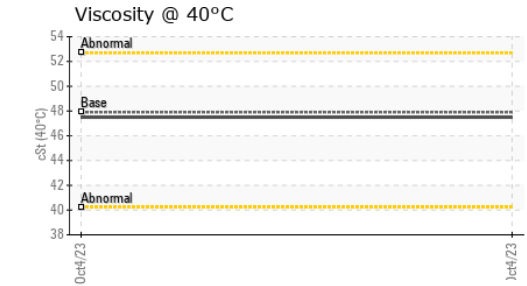
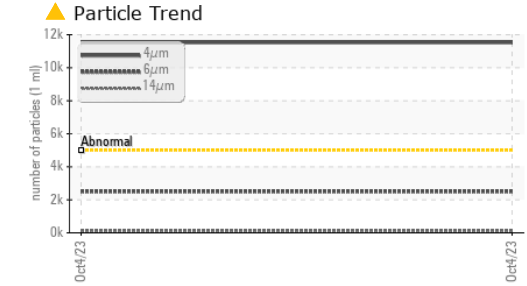
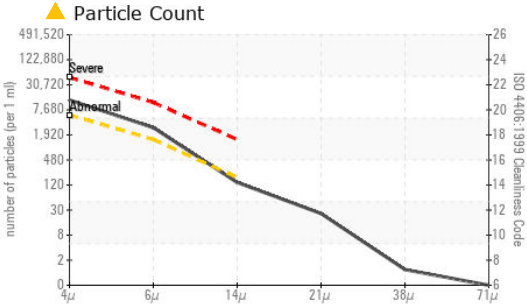
method	limit/base	current	history1	history2	
Particles >4µm	ASTM D7647	>5000	▲ 11527	---	---
Particles >6µm	ASTM D7647	>1300	▲ 2505	---	---
Particles >14µm	ASTM D7647	>160	122	---	---
Particles >21µm	ASTM D7647	>40	22	---	---
Particles >38µm	ASTM D7647	>10	1	---	---
Particles >71µm	ASTM D7647	>3	0	---	---
Oil Cleanliness	ISO 4406 (c)	>19/17/14	▲ 21/19/14	---	---

Particle Filter (Magn: 100 x)





# OIL ANALYSIS REPORT



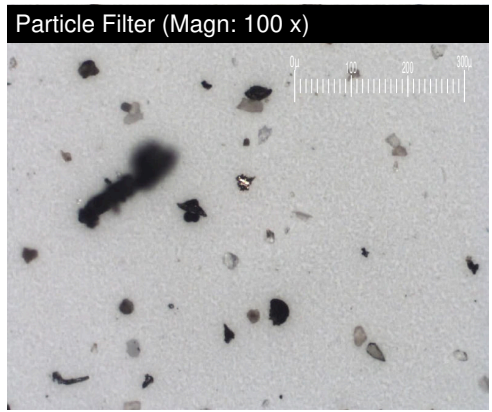
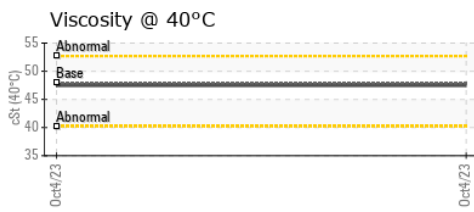
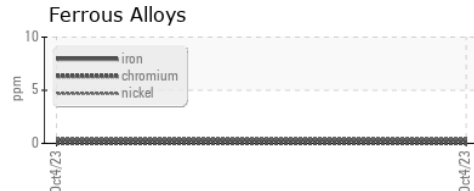
VISUAL	method	limit/base	current	history1	history2	
White Metal	scalar	Visual*	NONE	▲ VLITE	---	---
Yellow Metal	scalar	Visual*	NONE	NONE	---	---
Precipitate	scalar	Visual*	NONE	NONE	---	---
Silt	scalar	Visual*	NONE	NONE	---	---
Debris	scalar	Visual*	NONE	NONE	---	---
Sand/Dirt	scalar	Visual*	NONE	NONE	---	---
Appearance	scalar	Visual*	NORML	NORML	---	---
Odor	scalar	Visual*	NORML	NORML	---	---
Emulsified Water	scalar	Visual*	>0.05	NEG	---	---
Free Water	scalar	Visual*		NEG	---	---

FLUID PROPERTIES	method	limit/base	current	history1	history2	
Visc @ 40°C	cSt	ASTM D7279(m)	47.9	47.5	---	---

### SAMPLE IMAGES

SAMPLE IMAGES	method	limit/base	current	history1	history2
Color					
Bottom					
PrtFilter					

### GRAPHS



**Laboratory** : WearCheck - C8-1175 Appleby Line, Burlington, ON L7L 5H9  
**Sample No.** : WC0848413      **Received** : 13 Oct 2023  
**Lab Number** : 02588915      **Diagnosed** : 16 Oct 2023  
**Unique Number** : 5657981      **Diagnostician** : Kevin Marson  
**Test Package** : MOB 2 ( Additional Tests: Bottom, BottomAnalysis, FilterPatch, PrtFilter )

**RWF Industries**  
 873 Devonshire Ave.  
 Woodstock, ON  
 CA N4S 8Z4  
 Contact: Tami Arnold  
 tamia@rwfbron.com  
 T:  
 F: (519)421-0028

To discuss this sample report, contact Customer Service at 1-800-268-2131.  
 Test denoted (\*) outside scope of accreditation, (m) method modified, (e) tested at external lab.  
 Validity of results and interpretation are based on the sample and information as supplied.