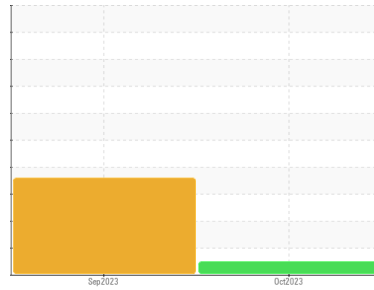




# FILTER DEBRIS ANALYSIS

Sample Rating Trend



**NORMAL**



Machine Id  
**323 MAIN**

Component  
**Main Filter**

Fluid  
**EASTMAN TURBO OIL 2380 (--- GAL)**

## DIAGNOSIS

### Recommendation

Resample at the next service interval to monitor.

### Wear Particles

The filter contained no appreciable wear particles, only a minor of rolling fatigue particles (platelets) that tested positive for aluminum. All filter wear levels are normal.

### Contaminants

The filter contained only normal levels of contaminants, and debris. Major material is carbon and grit. All filter contaminant levels are normal.

SAMPLE INFORMATION		method	limit/base	current	history1	history2
Sample Number	Client Info			<b>PP</b>	PP	---
Sample Date	Client Info			<b>12 Oct 2023</b>	18 Sep 2023	---
Machine Age	hrs	Client Info		<b>0</b>	0	---
Oil Age	hrs	Client Info		<b>0</b>	0	---
Oil Changed	Client Info			<b>N/A</b>	N/A	---
Sample Status				<b>NORMAL</b>	ABNORMAL	---

FILTER WEAR PARTICLES		method	limit/base	current	history1	history2
Ferrous Rubbing	Scale 0-10	ASTM D7684*		<b>1</b>	2	
Ferrous Sliding	Scale 0-10	ASTM D7684*				
Ferrous Cutting	Scale 0-10	ASTM D7684*		<b>1</b>	2	
Ferrous Rolling	Scale 0-10	ASTM D7684*				
Ferrous Break-in	Scale 0-10	ASTM D7684*				
Ferrous Spheres	Scale 0-10	ASTM D7684*				
Ferrous Black Oxides	Scale 0-10	ASTM D7684*				
Ferrous Red Oxides	Scale 0-10	ASTM D7684*				
Ferrous Corrosive	Scale 0-10	ASTM D7684*				
Ferrous Other	Scale 0-10	ASTM D7684*				
Nonferrous Rubbing	Scale 0-10	ASTM D7684*				
Nonferrous Sliding	Scale 0-10	ASTM D7684*				
Nonferrous Cutting	Scale 0-10	ASTM D7684*				
Nonferrous Rolling	Scale 0-10	ASTM D7684*		<b>1</b>		
Nonferrous Other	Scale 0-10	ASTM D7684*				

FILTER CONTAMINANTS		method	limit/base	current	history1	history2
Sand/Dirt	Scale 0-10	ASTM D7684*		<b>1</b>	2	
Fibres	Scale 0-10	ASTM D7684*		<b>1</b>	2	
Spheres	Scale 0-10	ASTM D7684*				
Other	Scale 0-10	ASTM D7684*			6	
Patch Weight	mg	ASTM D7684*		<b>36</b>	495	---

SAMPLE IMAGES		method	limit/base	current	history1	history2
Color					no image	no image
Bottom					no image	no image

Machine Id

**323 MAIN**

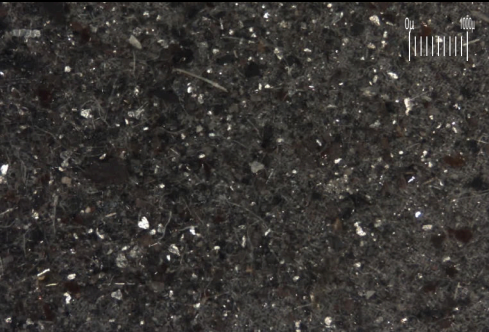
Component

**Main Filter**

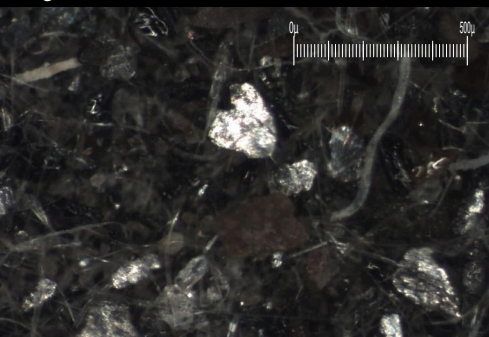
Fluid

**EASTMAN TURBO OIL 2380 (--- GAL)**

Magn: 10x Illum: RW



Magn: 60x Illum: RW



**WEAR**

The filter contained no appreciable wear particles, only a minor of rolling fatigue particles (platelets) that tested positive for aluminum. All filter wear levels are normal.