



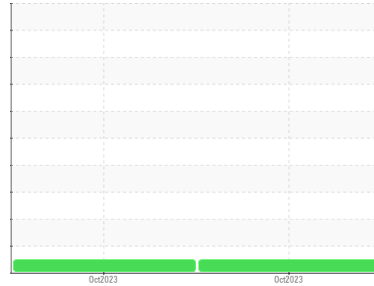
FILTER DEBRIS ANALYSIS

Sample Rating Trend

NORMAL



Area
Filter [1331491]
 Machine Id
5-3-230 - Recirc Filter
 Component
Filter
 Fluid
NOT GIVEN (--- GAL)



DIAGNOSIS

Recommendation

Resample at the next service interval to monitor.

Wear Particles

The filter contained no appreciable wear particles. All filter wear levels are normal.

Contaminants

The filter contained only normal levels of contaminants, and debris. All filter contaminant levels are normal.

SAMPLE INFORMATION

method	limit/base	current	history1	history2
Sample Number	Client Info	WC	WC	---
Sample Date	Client Info	17 Oct 2023	16 Oct 2023	---
Machine Age	hrs Client Info	0	0	---
Oil Age	hrs Client Info	0	0	---
Oil Changed	Client Info	N/A	N/A	---
Sample Status		NORMAL	NORMAL	---

FILTER WEAR PARTICLES

method	limit/base	current	history1	history2
Ferrous Rubbing	Scale 0-10 ASTM D7684*	1	1	
Ferrous Sliding	Scale 0-10 ASTM D7684*			
Ferrous Cutting	Scale 0-10 ASTM D7684*			
Ferrous Rolling	Scale 0-10 ASTM D7684*			
Ferrous Break-in	Scale 0-10 ASTM D7684*			
Ferrous Spheres	Scale 0-10 ASTM D7684*			
Ferrous Black Oxides	Scale 0-10 ASTM D7684*			
Ferrous Red Oxides	Scale 0-10 ASTM D7684*			
Ferrous Corrosive	Scale 0-10 ASTM D7684*			
Ferrous Other	Scale 0-10 ASTM D7684*			
Nonferrous Rubbing	Scale 0-10 ASTM D7684*	1	1	
Nonferrous Sliding	Scale 0-10 ASTM D7684*			
Nonferrous Cutting	Scale 0-10 ASTM D7684*			
Nonferrous Rolling	Scale 0-10 ASTM D7684*			
Nonferrous Other	Scale 0-10 ASTM D7684*			

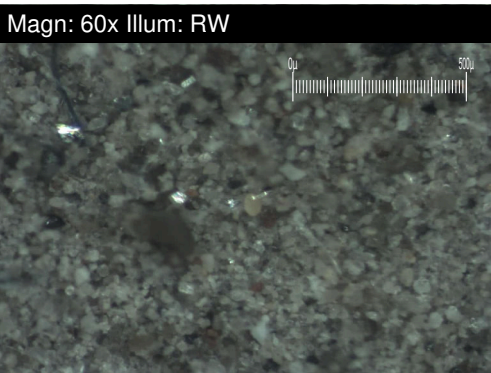
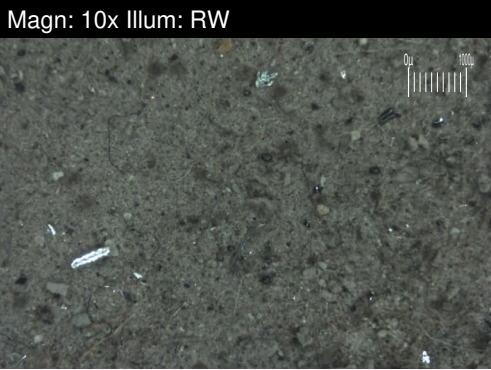
FILTER CONTAMINANTS

method	limit/base	current	history1	history2
Sand/Dirt	Scale 0-10 ASTM D7684*	2	3	
Fibres	Scale 0-10 ASTM D7684*	1	2	
Spheres	Scale 0-10 ASTM D7684*			
Other	Scale 0-10 ASTM D7684*			
Patch Weight	mg ASTM D7684*	74	129	---

SAMPLE IMAGES

method	limit/base	current	history1	history2
Color			no image	no image
Bottom			no image	no image

Area
Filter [1331491]
Machine Id
5-3-230 - Recirc Filter
Component
Filter
Fluid
NOT GIVEN (--- GAL)



WEAR

The filter contained no appreciable wear particles. All filter wear levels are normal.