



PROBLEM SUMMARY

Area
PLANT 1
 Machine Id
BAY 6 SLT
 Component
2 Hydraulic System
 Fluid
COMMERCIAL OIL LUBRIKO AW 46 (100 LTR)

Sample Rating Trend

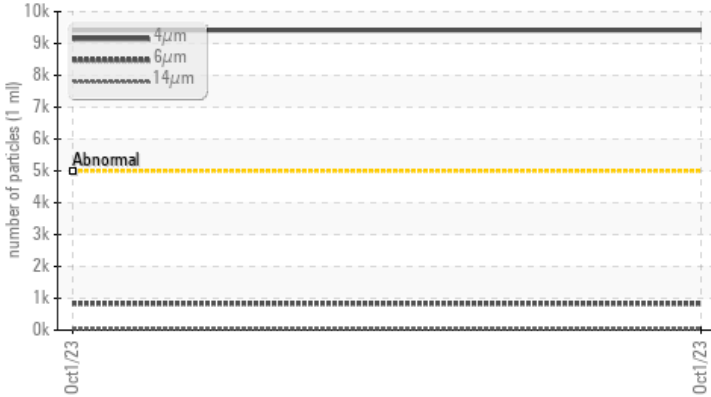


SEDIMENT



COMPONENT CONDITION SUMMARY

▲ Particle Trend



RECOMMENDATION

We recommend that you drain the oil from the component if this has not already been done. We recommend you service the filters on this component. Please specify the component make and model with your next sample.

PROBLEMATIC TEST RESULTS

Sample Status				ABNORMAL	---	---
Particles >4µm		ASTM D7647	>5000	▲ 9417	---	---
Oil Cleanliness		ISO 4406 (c)	>19/17/14	▲ 20/17/13	---	---
Silt	scalar	Visual*	NONE	▲ LIGHT	---	---
PrtFilter					no image	no image

Customer Id: TAYSTO
Sample No.: WC0754636
Lab Number: 02590011
Test Package: IND 2



To manage this report scan the QR code

To discuss the diagnosis or test data:
 Kevin Marson +1 (289)291-4644 x4644
Kevin.Marson@wearcheck.com

To change component or sample information:
 Gloria Gonzalez +1 (289)291-4643 x4643
gloria.gonzalez@wearcheck.com

RECOMMENDED ACTIONS

Action	Status	Date	Done By	Description
Change Fluid	---	---	?	We recommend that you drain the oil from the component if this has not already been done.
Change Filter	---	---	?	We recommend you service the filters on this component.
Information Required	---	---	?	Please specify the component make and model with your next sample.

HISTORICAL DIAGNOSIS



OIL ANALYSIS REPORT

Sample Rating Trend

SEDIMENT



Area
PLANT 1
 Machine Id
BAY 6 SLT
 Component
2 Hydraulic System
 Fluid
COMMERCIAL OIL LUBRIKO AW 46 (100 LTR)

DIAGNOSIS

Recommendation

We recommend that you drain the oil from the component if this has not already been done. We recommend you service the filters on this component. Please specify the component make and model with your next sample.

Wear

All component wear rates are normal.

Contamination

There is a light amount of silt (particulates < 14 microns in size) present in the oil. There is a moderate amount of visible silt present in the sample.

Fluid Condition

The AN level is acceptable for this fluid.

SAMPLE INFORMATION

method	limit/base	current	history1	history2
Sample Number	Client Info	WC0754636	---	---
Sample Date	Client Info	01 Oct 2023	---	---
Machine Age	hrs Client Info	0	---	---
Oil Age	hrs Client Info	0	---	---
Oil Changed	Client Info	Not Chngd	---	---
Sample Status		ABNORMAL	---	---

WEAR METALS

method	limit/base	current	history1	history2
Iron ppm	ASTM D5185(m) >20	<1	---	---
Chromium ppm	ASTM D5185(m) >10	0	---	---
Nickel ppm	ASTM D5185(m) >10	<1	---	---
Titanium ppm	ASTM D5185(m)	0	---	---
Silver ppm	ASTM D5185(m)	<1	---	---
Aluminum ppm	ASTM D5185(m) >10	<1	---	---
Lead ppm	ASTM D5185(m) >10	<1	---	---
Copper ppm	ASTM D5185(m) >75	19	---	---
Tin ppm	ASTM D5185(m) >10	0	---	---
Antimony ppm	ASTM D5185(m)	0	---	---
Vanadium ppm	ASTM D5185(m)	0	---	---
Beryllium ppm	ASTM D5185(m)	0	---	---
Cadmium ppm	ASTM D5185(m)	0	---	---

ADDITIVES

method	limit/base	current	history1	history2
Boron ppm	ASTM D5185(m)	0	---	---
Barium ppm	ASTM D5185(m)	<1	---	---
Molybdenum ppm	ASTM D5185(m)	0	---	---
Manganese ppm	ASTM D5185(m)	0	---	---
Magnesium ppm	ASTM D5185(m)	<1	---	---
Calcium ppm	ASTM D5185(m)	3	---	---
Phosphorus ppm	ASTM D5185(m)	318	---	---
Zinc ppm	ASTM D5185(m)	317	---	---
Sulfur ppm	ASTM D5185(m)	2135	---	---
Lithium ppm	ASTM D5185(m)	<1	---	---

CONTAMINANTS

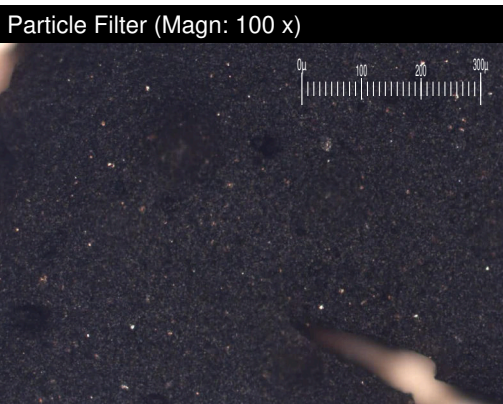
method	limit/base	current	history1	history2
Silicon ppm	ASTM D5185(m) >20	1	---	---
Sodium ppm	ASTM D5185(m)	0	---	---
Potassium ppm	ASTM D5185(m) >20	0	---	---

FLUID CLEANLINESS

method	limit/base	current	history1	history2
Particles >4µm	ASTM D7647 >5000	▲ 9417	---	---
Particles >6µm	ASTM D7647 >1300	836	---	---
Particles >14µm	ASTM D7647 >160	47	---	---
Particles >21µm	ASTM D7647 >40	6	---	---
Particles >38µm	ASTM D7647 >10	1	---	---
Particles >71µm	ASTM D7647 >3	0	---	---
Oil Cleanliness	ISO 4406 (c) >19/17/14	▲ 20/17/13	---	---

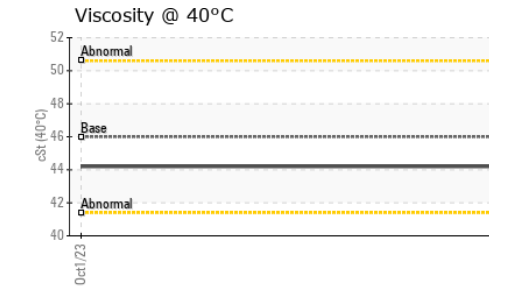
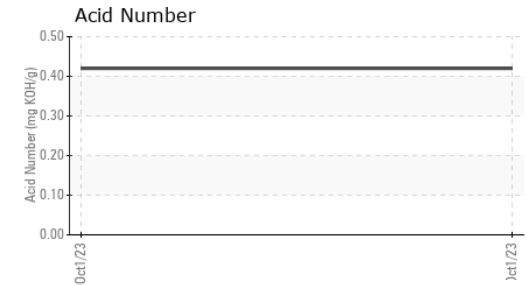
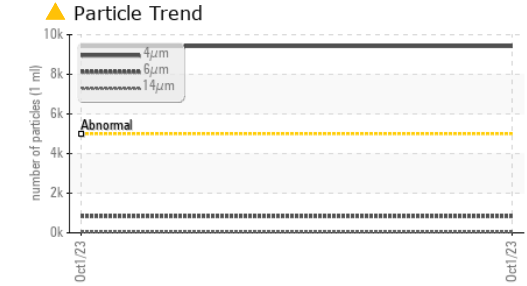
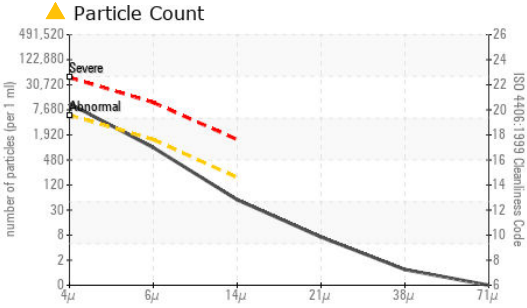
FLUID DEGRADATION

method	limit/base	current	history1	history2
Acid Number (AN) mg KOH/g	ASTM D974*	0.42	---	---





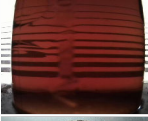

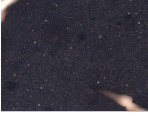
OIL ANALYSIS REPORT



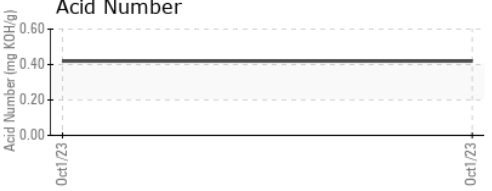
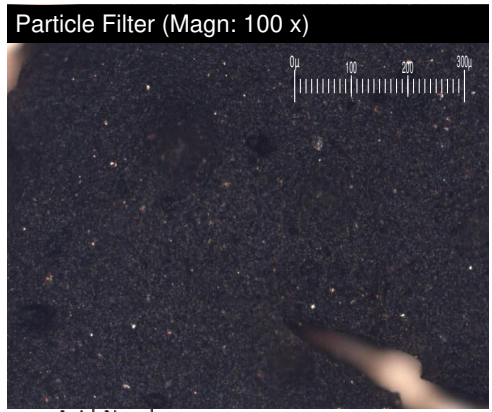
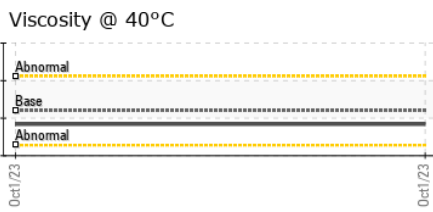
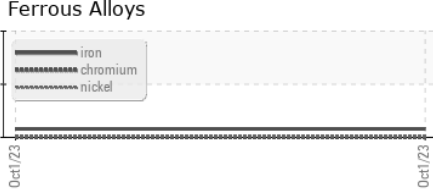
VISUAL	method	limit/base	current	history1	history2
White Metal	scalar	Visual*	NONE	VLITE	---
Yellow Metal	scalar	Visual*	NONE	VLITE	---
Precipitate	scalar	Visual*	NONE	NONE	---
Silt	scalar	Visual*	NONE	▲ LIGHT	---
Debris	scalar	Visual*	NONE	VLITE	---
Sand/Dirt	scalar	Visual*	NONE	NONE	---
Appearance	scalar	Visual*	NORML	NORML	---
Odor	scalar	Visual*	NORML	NORML	---
Emulsified Water	scalar	Visual*	>0.1	NEG	---
Free Water	scalar	Visual*		NEG	---

FLUID PROPERTIES	method	limit/base	current	history1	history2
Visc @ 40°C	cSt	ASTM D7279(m)	46	44.2	---

SAMPLE IMAGES	method	limit/base	current	history1	history2
---------------	--------	------------	---------	----------	----------

Color				no image	no image
Bottom				no image	no image
PrtFilter				no image	no image

GRAPHS



Laboratory : WearCheck - C8-1175 Appleby Line, Burlington, ON L7L 5H9
Sample No. : WC0754636 **Received** : 18 Oct 2023
Lab Number : 02590011 **Diagnosed** : 20 Oct 2023
Unique Number : 5659077 **Diagnostician** : Kevin Marson
Test Package : IND 2 (Additional Tests: Bottom, BottomAnalysis, FilterPatch, PrtFilter)

TAYLOR STEEL
 484 ARVIN AVE
 STONEY CREEK, ON
 CA L8E 2M9
 Contact: George Campanaro
 gcampanaro@taylorsteel.com
 T: (905)662-4925
 F: (905)662-4928

To discuss this sample report, contact Customer Service at 1-800-268-2131.
 Test denoted (*) outside scope of accreditation, (m) method modified, (e) tested at external lab.
 Validity of results and interpretation are based on the sample and information as supplied.