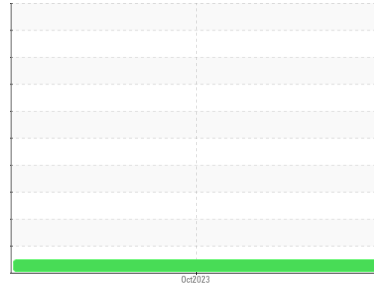




# OIL ANALYSIS REPORT

Sample Rating Trend

**NORMAL**



Area  
**(C-GTGA)**  
Machine Id  
**BEEGCRAFT PCE-PR0067**  
Component  
**Left Jet Turbine**  
Fluid  
**EASTMAN TURBO OIL 2380 (13 LTR)**

## DIAGNOSIS

### Recommendation

Resample at the next service interval to monitor.

### Wear

All component wear rates are normal.

### Contamination

There is no indication of any contamination in the oil.

### Fluid Condition

The AN level is acceptable for this fluid. The condition of the oil is suitable for further service.

## SAMPLE INFORMATION

	method	limit/base	current	history1	history2
Sample Number	Client Info		<b>WC0766979</b>	---	---
Sample Date	Client Info		<b>13 Oct 2023</b>	---	---
TSN	hrs	Client Info	<b>0</b>	---	---
TSO	hrs	Client Info	<b>0</b>	---	---
Oil Age	hrs	Client Info	<b>0</b>	---	---
Oil Changed		Client Info	<b>N/A</b>	---	---
Sample Status			<b>NORMAL</b>	---	---

## WEAR METALS

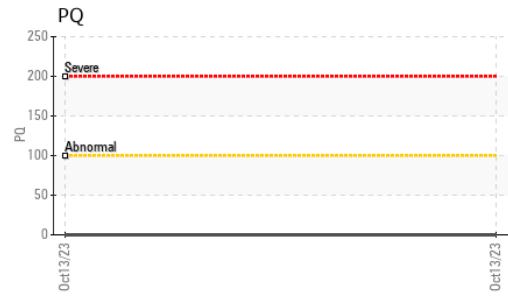
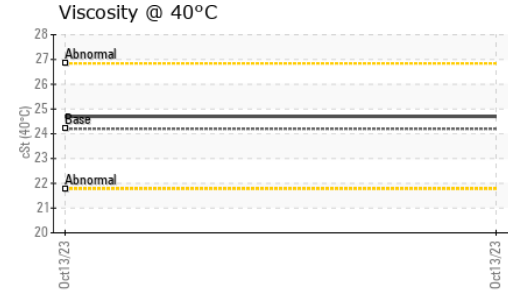
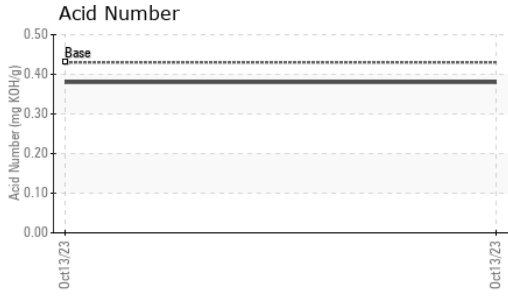
	method	limit/base	current	history1	history2
PQ	ASTM D8184*		<b>0</b>	---	---
Iron	ppm	ASTM D5185(m) >8	<b>0</b>	---	---
Chromium	ppm	ASTM D5185(m) >2	<b>0</b>	---	---
Nickel	ppm	ASTM D5185(m) >2	<b>&lt;1</b>	---	---
Titanium	ppm	ASTM D5185(m) >2	<b>0</b>	---	---
Silver	ppm	ASTM D5185(m) >2	<b>&lt;1</b>	---	---
Aluminum	ppm	ASTM D5185(m) >2	<b>0</b>	---	---
Lead	ppm	ASTM D5185(m) >3	<b>0</b>	---	---
Copper	ppm	ASTM D5185(m) >3	<b>&lt;1</b>	---	---
Tin	ppm	ASTM D5185(m) >2	<b>0</b>	---	---
Antimony	ppm	ASTM D5185(m)	<b>0</b>	---	---
Vanadium	ppm	ASTM D5185(m)	<b>0</b>	---	---
Beryllium	ppm	ASTM D5185(m)	<b>0</b>	---	---
Cadmium	ppm	ASTM D5185(m)	<b>0</b>	---	---

## FERROGRAPHY

	method	limit/base	current	history1	history2
Ferrous Rubbing	Scale 0-10	ASTM D7684*	<b>1</b>		
Ferrous Sliding	Scale 0-10	ASTM D7684*			
Ferrous Cutting	Scale 0-10	ASTM D7684*			
Ferrous Rolling	Scale 0-10	ASTM D7684*			
Ferrous Break-in	Scale 0-10	ASTM D7684*			
Ferrous Spheres	Scale 0-10	ASTM D7684*			
Ferrous Black Oxides	Scale 0-10	ASTM D7684*			
Ferrous Red Oxides	Scale 0-10	ASTM D7684*			
Ferrous Corrosive	Scale 0-10	ASTM D7684*			
Ferrous Other	Scale 0-10	ASTM D7684*			
Nonferrous Rubbing	Scale 0-10	ASTM D7684*	<b>1</b>		
Nonferrous Sliding	Scale 0-10	ASTM D7684*			
Nonferrous Cutting	Scale 0-10	ASTM D7684*			
Nonferrous Rolling	Scale 0-10	ASTM D7684*	<b>1</b>		
Nonferrous Other	Scale 0-10	ASTM D7684*			
Sand/Dirt	Scale 0-10	ASTM D7684*	<b>1</b>		
Fibres	Scale 0-10	ASTM D7684*	<b>1</b>		
Spheres	Scale 0-10	ASTM D7684*			
Other	Scale 0-10	ASTM D7684*			
Patch Weight	mg	ASTM D7684*	<b>73</b>	---	---



# OIL ANALYSIS REPORT





ADDITIVES	method	limit/base	current	history1	history2	
Boron	ppm	ASTM D5185(m)	0	<1	---	---
Barium	ppm	ASTM D5185(m)	0	0	---	---
Molybdenum	ppm	ASTM D5185(m)	0	0	---	---
Manganese	ppm	ASTM D5185(m)		0	---	---
Magnesium	ppm	ASTM D5185(m)	0	0	---	---
Calcium	ppm	ASTM D5185(m)	0	0	---	---
Phosphorus	ppm	ASTM D5185(m)	2500	2675	---	---
Zinc	ppm	ASTM D5185(m)	0	<1	---	---
Sulfur	ppm	ASTM D5185(m)	0	4	---	---
Lithium	ppm	ASTM D5185(m)		<1	---	---

CONTAMINANTS	method	limit/base	current	history1	history2	
Silicon	ppm	ASTM D5185(m)	>8	<1	---	---
Sodium	ppm	ASTM D5185(m)		<1	---	---
Potassium	ppm	ASTM D5185(m)	>20	0	---	---

FLUID DEGRADATION	method	limit/base	current	history1	history2	
Acid Number (AN)	mg KOH/g	ASTM D974*	0.43	0.38	---	---

VISUAL	method	limit/base	current	history1	history2	
White Metal	scalar	Visual*	NONE	NONE	---	---
Yellow Metal	scalar	Visual*	NONE	NONE	---	---
Precipitate	scalar	Visual*	NONE	NONE	---	---
Silt	scalar	Visual*	NONE	NONE	---	---
Debris	scalar	Visual*	NONE	NONE	---	---
Sand/Dirt	scalar	Visual*	NONE	NONE	---	---
Appearance	scalar	Visual*	NORML	NORML	---	---
Odor	scalar	Visual*	NORML	NORML	---	---
Emulsified Water	scalar	Visual*	>0.1	NEG	---	---
Free Water	scalar	Visual*		NEG	---	---

FLUID PROPERTIES	method	limit/base	current	history1	history2	
Visc @ 40°C	cSt	ASTM D7279(m)	24.2	24.7	---	---

SAMPLE IMAGES	method	limit/base	current	history1	history2
Color				no image	no image
Bottom				no image	no image



**Laboratory** : WearCheck - C8-1175 Appleby Line, Burlington, ON L7L 5H9  
**Sample No.** : WC0766979      **Received** : 19 Oct 2023  
**Lab Number** : 02590252      **Diagnosed** : 23 Oct 2023  
**Unique Number** : 5659318      **Diagnostician** : Bill Quesnel  
**Test Package** : AVI 2 ( Additional Tests: PQ )

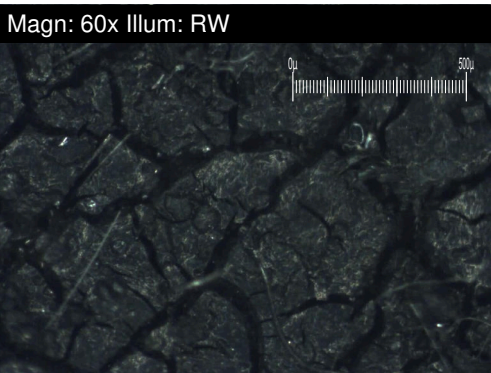
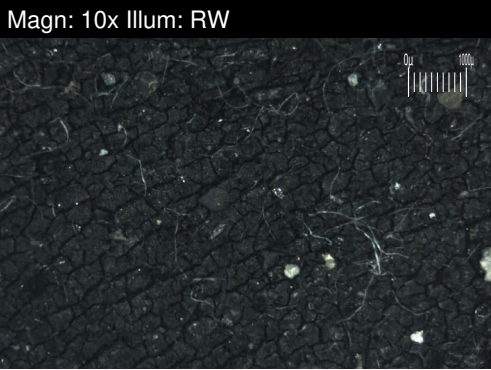
**SKYLINK EXPRESS**  
 9300 AIRPORT ROAD, HANGAR #4  
 MOUNT HOPE, ON  
 CA L0R 1W0  
 Contact: Morris Green  
 mgreen@skylinkepress.com  
 T: (905)679-4141  
 F: (506)388-2968

To discuss this sample report, contact Customer Service at 1-800-268-2131.  
 Test denoted (\*) outside scope of accreditation, (m) method modified, (e) tested at external lab.  
 Validity of results and interpretation are based on the sample and information as supplied.



# FILTER REPORT

Area  
**(C-GTGA)**  
 Machine Id  
**BEECGCRAFT PCE-PR0067**  
 Component  
**Left Jet Turbine**  
 Fluid  
**EASTMAN TURBO OIL 2380 (13 LTR)**



FERROGRAPHY	method	limit/base	current	history1	history2
Ferrous Rubbing	Scale 0-10 ASTM D7684*		1		
Ferrous Sliding	Scale 0-10 ASTM D7684*				
Ferrous Cutting	Scale 0-10 ASTM D7684*				
Ferrous Rolling	Scale 0-10 ASTM D7684*				
Ferrous Break-in	Scale 0-10 ASTM D7684*				
Ferrous Spheres	Scale 0-10 ASTM D7684*				
Ferrous Black Oxides	Scale 0-10 ASTM D7684*				
Ferrous Red Oxides	Scale 0-10 ASTM D7684*				
Ferrous Corrosive	Scale 0-10 ASTM D7684*				
Ferrous Other	Scale 0-10 ASTM D7684*				
Nonferrous Rubbing	Scale 0-10 ASTM D7684*		1		
Nonferrous Sliding	Scale 0-10 ASTM D7684*				
Nonferrous Cutting	Scale 0-10 ASTM D7684*				
Nonferrous Rolling	Scale 0-10 ASTM D7684*		1		
Nonferrous Other	Scale 0-10 ASTM D7684*				
Sand/Dirt	Scale 0-10 ASTM D7684*		1		
Fibres	Scale 0-10 ASTM D7684*		1		
Spheres	Scale 0-10 ASTM D7684*				
Other	Scale 0-10 ASTM D7684*				
Patch Weight	mg ASTM D7684*		73	---	---

## WEAR

All component wear rates are normal.

*This page left intentionally blank*