



OIL ANALYSIS REPORT

Sample Rating Trend

NORMAL



Area
Extrudex Alum - E00400
 Machine Id
A2310083
 Component
Hydraulic System
 Fluid
AW HYDRAULIC OIL ISO 68 (--- GAL)

DIAGNOSIS

Recommendation

This is a baseline read-out on the submitted sample.

Wear

Copper and iron ppm levels are noted.

Contamination

{not applicable}

Fluid Condition

{not applicable}

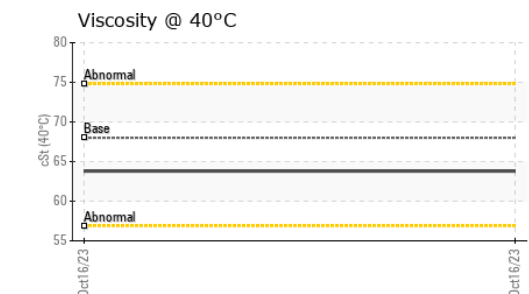
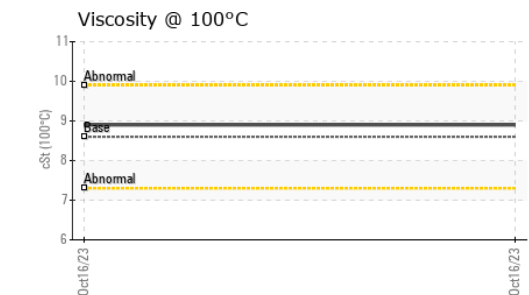
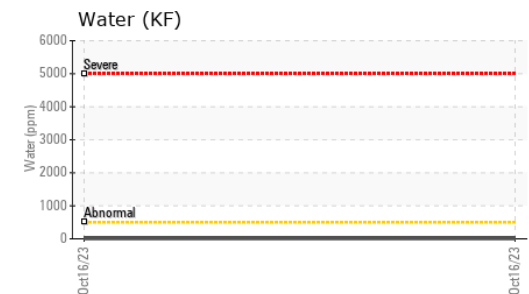
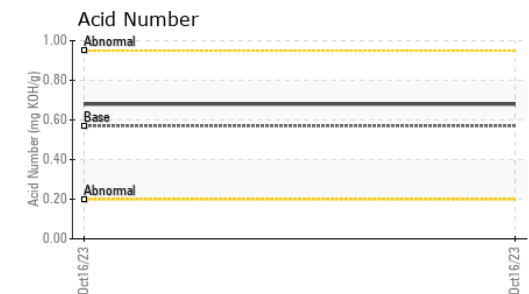
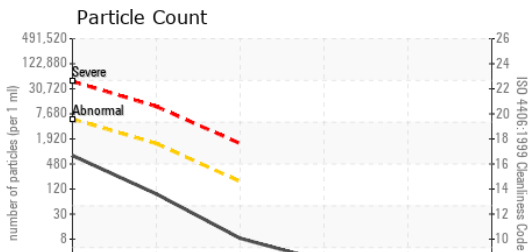
SAMPLE INFORMATION		method	limit/base	current	history1	history2
Batch #	Client Info			2023 10 0130	---	---
Machine ID	Client Info			A2310083	---	---
Department	Client Info			Production	---	---
Sample From	Client Info			Machine	---	---
Production Stage	Client Info			Final	---	---
Sent to WC	Client Info			10/17/2023	---	---
Sample Number	Client Info			E30000526	---	---
Sample Date	Client Info			16 Oct 2023	---	---
Machine Age	hrs	Client Info		0	---	---
Oil Age	hrs	Client Info		0	---	---
Oil Changed	Client Info			N/A	---	---
Sample Status				NORMAL	---	---

WEAR METALS		method	limit/base	current	history1	history2
PQ		ASTM D8184*		0	---	---
Iron	ppm	ASTM D5185(m)	>20	53	---	---
Chromium	ppm	ASTM D5185(m)	>20	<1	---	---
Nickel	ppm	ASTM D5185(m)	>20	1	---	---
Titanium	ppm	ASTM D5185(m)		0	---	---
Silver	ppm	ASTM D5185(m)		<1	---	---
Aluminum	ppm	ASTM D5185(m)	>20	12	---	---
Lead	ppm	ASTM D5185(m)	>20	8	---	---
Copper	ppm	ASTM D5185(m)	>20	81	---	---
Tin	ppm	ASTM D5185(m)	>20	<1	---	---
Antimony	ppm	ASTM D5185(m)		0	---	---
Vanadium	ppm	ASTM D5185(m)		0	---	---
Beryllium	ppm	ASTM D5185(m)		0	---	---
Cadmium	ppm	ASTM D5185(m)		0	---	---

ADDITIVES		method	limit/base	current	history1	history2
Boron	ppm	ASTM D5185(m)	5	<1	---	---
Barium	ppm	ASTM D5185(m)	5	<1	---	---
Molybdenum	ppm	ASTM D5185(m)	5	0	---	---
Manganese	ppm	ASTM D5185(m)		<1	---	---
Magnesium	ppm	ASTM D5185(m)	25	14	---	---
Calcium	ppm	ASTM D5185(m)	200	120	---	---
Phosphorus	ppm	ASTM D5185(m)	300	521	---	---
Zinc	ppm	ASTM D5185(m)	370	363	---	---
Sulfur	ppm	ASTM D5185(m)	2500	1958	---	---
Lithium	ppm	ASTM D5185(m)		<1	---	---

CONTAMINANTS		method	limit/base	current	history1	history2
Silicon	ppm	ASTM D5185(m)	>15	4	---	---
Sodium	ppm	ASTM D5185(m)		3	---	---
Potassium	ppm	ASTM D5185(m)	>20	0	---	---
Water	%	ASTM D6304*	>0.05	0.001	---	---
ppm Water	ppm	ASTM D6304*	>500	7.3	---	---

OIL ANALYSIS REPORT



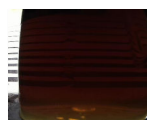
FLUID CLEANLINESS	method	limit/base	current	history1	history2
Particles >4µm	ASTM D7647	>5000	673	---	---
Particles >6µm	ASTM D7647	>1300	81	---	---
Particles >14µm	ASTM D7647	>160	7	---	---
Particles >21µm	ASTM D7647	>40	2	---	---
Particles >38µm	ASTM D7647	>10	1	---	---
Particles >71µm	ASTM D7647	>3	1	---	---
Oil Cleanliness	ISO 4406 (c)	>19/17/14	17/14/10	---	---

FLUID DEGRADATION	method	limit/base	current	history1	history2	
Acid Number (AN)	mg KOH/g	ASTM D974*	0.57	0.68	---	---

VISUAL	method	limit/base	current	history1	history2	
White Metal	scalar	Visual*	NONE	NONE	---	---
Yellow Metal	scalar	Visual*	NONE	NONE	---	---
Precipitate	scalar	Visual*	NONE	NONE	---	---
Silt	scalar	Visual*	NONE	NONE	---	---
Debris	scalar	Visual*	NONE	NONE	---	---
Sand/Dirt	scalar	Visual*	NONE	NONE	---	---
Appearance	scalar	Visual*	NORML	NORML	---	---
Odor	scalar	Visual*	NORML	NORML	---	---
Emulsified Water	scalar	Visual*	>0.05	NEG	---	---
Free Water	scalar	Visual*		NEG	---	---

FLUID PROPERTIES	method	limit/base	current	history1	history2	
Visc @ 40°C	cSt	ASTM D7279(m)	68	63.8	---	---
Visc @ 100°C	cSt	ASTM D7279(m)	8.6	8.9	---	---
Viscosity Index (VI)	Scale	ASTM D2270*	96	114	---	---

SAMPLE IMAGES	method	limit/base	current	history1	history2
Color				no image	no image
Bottom				no image	no image



Laboratory : WearCheck - C8-1175 Appleby Line, Burlington, ON L7L 5H9
Sample No. : E30000526 **Received** : 19 Oct 2023
Lab Number : **02590258** **Diagnosed** : 20 Oct 2023
Unique Number : 5659324 **Diagnostician** : Tatiana Sorkina
Test Package : IND 2 (Additional Tests: KF, KV100, PQ, TAN Man, VI)

Environmental 360 Solutions Ltd.
 640 Victoria Street
 Cobourg, ON
 CA K9A 5H5
 Contact: Aylwin Lee
 aylwinlee@e360s.ca
 T: (905)372-2251
 F: (905)373-4950

To discuss this sample report, contact Customer Service at 1-800-268-2131.
 Test denoted (*) outside scope of accreditation, (m) method modified, (e) tested at external lab.
 Validity of results and interpretation are based on the sample and information as supplied.