

FUEL REPORT

Sample Rating Trend

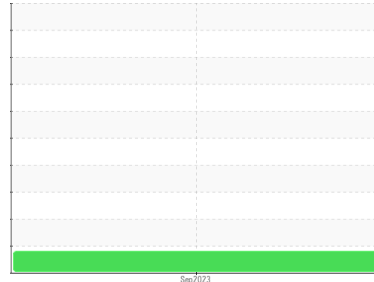
ISO



Area
[198710]
Machine Id
GD5867F

Component
Diesel Fuel
Fluid

No.1 DIESEL FUEL (ULTRALOW SULPHUR) (--- GAL)



DIAGNOSIS

Recommendation

Les tests de laboratoire indiquent que ce carburant peut être utilisé et qu'il répond à toutes les exigences. Nous vous recommandons de filtrer ce fluide avant de l'utiliser. Nous recommandons le remplacement des filtres de ce composant. Échantillonner de nouveau l'équipement au prochain intervalle de vidange afin d'en surveiller la condition.

Corrosion

(sans objet)

Contaminants

Il y a une légère quantité de limon (particules de 4 à 14 microns) dans le carburant. La teneur en eau est négligeable.

Fuel Condition

Tous les essais en laboratoire indiquent que cet échantillon satisfait aux spécifications pour le carburant diesel à ultra-faible teneur de soufre No.1 (US EPA/CGSB-3.517-3 type A).

SAMPLE INFORMATION		method	limit/base	current	history1	history2
Sample Number	Client Info			WA0019109	---	---
Sample Date	Client Info			19 Sep 2023	---	---
Machine Age	kms	Client Info		0	---	---
Sample Status				ATTENTION	---	---

PHYSICAL PROPERTIES		method	limit/base	current	history1	history2
Specific Gravity		ASTM D1298*	0.825	0.812	---	---
Fuel Color	text	Visual Screen*	Clear	Pink	---	---
Visc @ 40°C	cSt	ASTM D7279(m)	1.8	1.6	---	---
Pensky-Martens Flash Point	°C	ASTM D7215*	38	47.6	---	---

SULFUR CONTENT		method	limit/base	current	history1	history2
Sulfur	ppm	ASTM D5185(m)	10	8	---	---

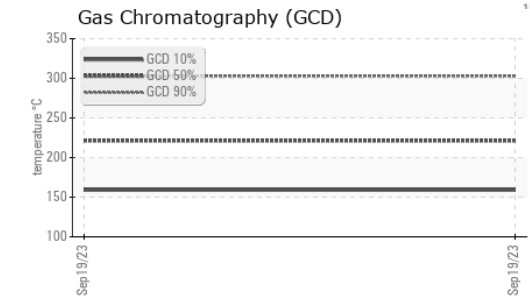
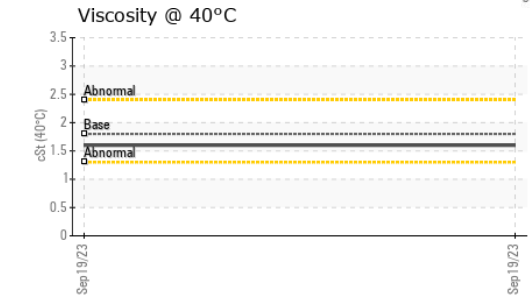
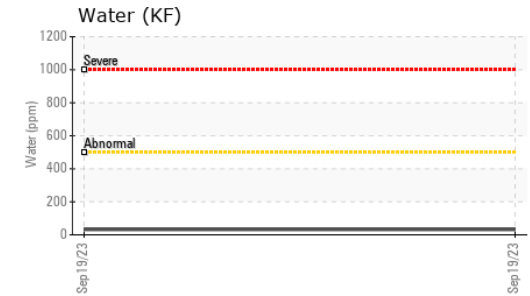
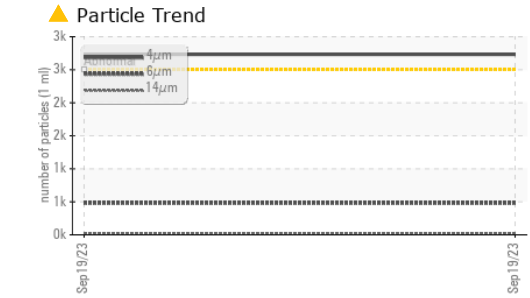
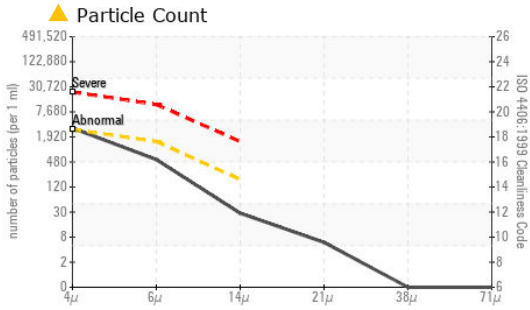
DISTILLATION		method	limit/base	current	history1	history2
Initial Boiling Point	°C	ASTM D2887*	159	155	---	---
5% Distillation Point	°C	ASTM D2887*		172	---	---
10% Distill Point	°C	ASTM D2887*	184	178	---	---
15% Distillation Point	°C	ASTM D2887*		183	---	---
20% Distill Point	°C	ASTM D2887*	196	189	---	---
30% Distill Point	°C	ASTM D2887*	205	198	---	---
40% Distill Point	°C	ASTM D2887*	216	209	---	---
50% Distill Point	°C	ASTM D2887*	227	220	---	---
60% Distill Point	°C	ASTM D2887*	238	233	---	---
70% Distill Point	°C	ASTM D2887*	251	245	---	---
80% Distill Point	°C	ASTM D2887*	264	261	---	---
85% Distillation Point	°C	ASTM D2887*		273	---	---
90% Distill Point	°C	ASTM D2887*	288	285	---	---
95% Distillation Point	°C	ASTM D2887*		305	---	---
Final Boiling Point	°C	ASTM D2887*	309	333	---	---

IGNITION QUALITY		method	limit/base	current	history1	history2
API Gravity		ASTM D1298*	40.1	42	---	---
Cetane Index		ASTM D4737*	<40.0	48	---	---

CONTAMINANTS		method	limit/base	current	history1	history2
Silicon	ppm	ASTM D5185(m)	<1.0	0	---	---
Sodium	ppm	ASTM D5185(m)	<0.1	<1	---	---
Potassium	ppm	ASTM D5185(m)	<0.1	0	---	---
Water	%	ASTM D6304*	<0.05	0.003	---	---
ppm Water	ppm	ASTM D6304*	<500	32.4	---	---

FLUID CLEANLINESS		method	limit/base	current	history1	history2
Particles >4µm		ASTM D7647	>2500	▲ 2732	---	---
Particles >6µm		ASTM D7647	>1300	482	---	---
Particles >14µm		ASTM D7647	>160	25	---	---
Particles >21µm		ASTM D7647	>40	5	---	---
Particles >38µm		ASTM D7647	>10	0	---	---
Particles >71µm		ASTM D7647	>3	0	---	---
Oil Cleanliness		ISO 4406 (c)	>18/17/14	▲ 19/16/12	---	---

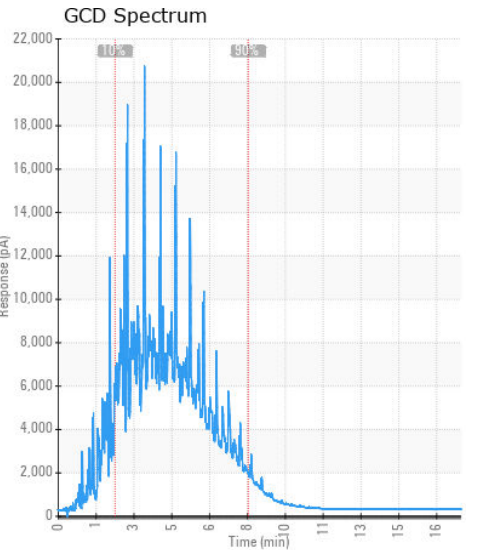
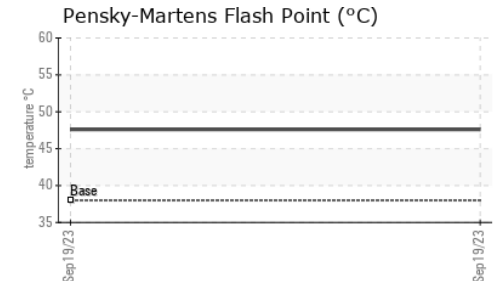
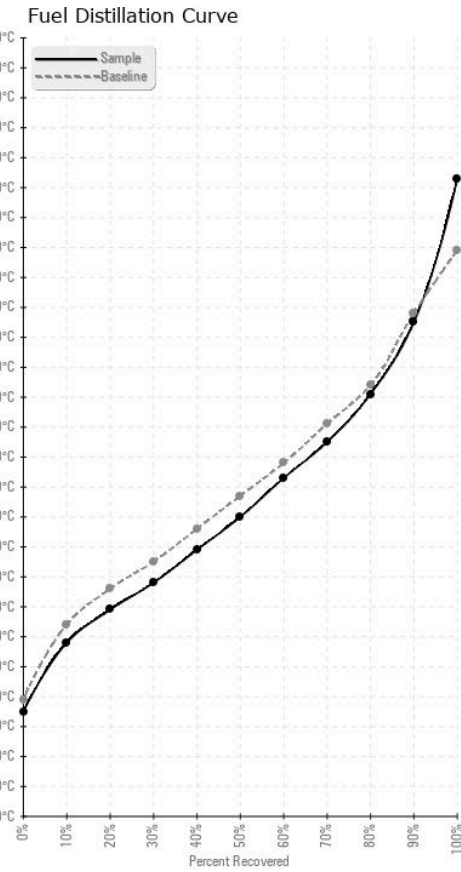
FUEL REPORT



HEAVY METALS	method	limit/base	current	history1	history2
Aluminum	ppm	ASTM D5185(m)	<0.1	0	---
Nickel	ppm	ASTM D5185(m)	<0.1	0	---
Lead	ppm	ASTM D5185(m)	<0.1	0	---
Vanadium	ppm	ASTM D5185(m)	<0.1	0	---
Iron	ppm	ASTM D5185(m)	<0.1	<1	---
Calcium	ppm	ASTM D5185(m)	<0.1	1	---
Magnesium	ppm	ASTM D5185(m)	<0.1	0	---
Phosphorus	ppm	ASTM D5185(m)	<0.1	0	---
Zinc	ppm	ASTM D5185(m)	<0.1	<1	---

SAMPLE IMAGES	method	limit/base	current	history1	history2
Color				no image	no image
Bottom				no image	no image

GRAPHS



Laboratory : WearCheck - C8-1175 Appleby Line, Burlington, ON L7L 5H9
Sample No. : WA0019109
Lab Number : 02590430
Unique Number : 5659496
Test Package : FUEL (Additional Tests: CC Flash, GC-PercFuel, PrtCount)

Received : 19 Oct 2023
Diagnosed : 23 Oct 2023
Diagnostician : Kevin Marson
Generatrice Drummond
 243 rue des ARTISANS
 SAINT-GERMAIN-DE-GRANTHAM, QC
 CA J0C 1K0
 Contact: Valerie Poirier
 poiervalerie@generatricedrummond.com
 T: (819)398-6811
 F: (819)398-7022

To discuss this sample report, contact Customer Service at 1-800-268-2131.
 Test denoted (*) outside scope of accreditation, (m) method modified, (e) tested at external lab.
 Validity of results and interpretation are based on the sample and information as supplied.