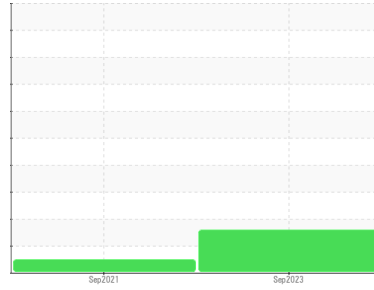




PROBLEM SUMMARY

Area
Saugen Shores SP-17701
 Machine Id
13K00JA
 Component
Grease
 Fluid
SKF LGWM 1 (--- LTR)

Sample Rating Trend



VISCOSITY



COMPONENT CONDITION SUMMARY

No relevant graphs to display

RECOMMENDATION

We recommend an early resample to monitor this condition.

PROBLEMATIC TEST RESULTS

Sample Status				SEVERE	NORMAL	---
NLGI Consistency	NLGI Scale	SKF Method*	1	000-00	00-0	---
PrtFilter						no image

Customer Id: VESTAS
Sample No.: PP0835294
Lab Number: 02590799
Test Package: GRS 1



To manage this report scan the QR code

To discuss the diagnosis or test data:
 Bill Quesnel CLS,OMA II,MLA-III,LLA-I +1
 (289)291-4641 x4641
Bill.Quesnel@wearcheck.com

To change component or sample information:
 Gloria Gonzalez +1 (289)291-4643 x4643
gloria.gonzalez@wearcheck.com

RECOMMENDED ACTIONS

Action	Status	Date	Done By	Description
Resample	MISSED	Oct 23 2023	?	We recommend an early resample to monitor this condition.

HISTORICAL DIAGNOSIS

13 Sep 2021 Diag: Bill Quesnel

NORMAL



Resample at the next service interval to monitor. All component wear rates are normal. There is no indication of any contamination in the grease. The condition of the grease is acceptable for the time in service.

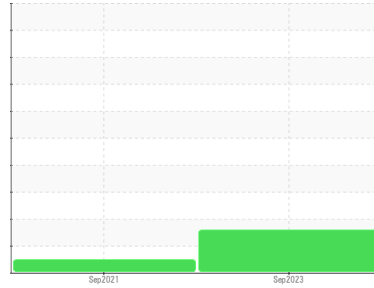
view report





GREASE ANALYSIS

Sample Rating Trend



VISCOSITY



Area
Saugen Shores SP-17701
 Machine ID
13K00JA
 Component
Grease
 Fluid
SKF LGWM 1 (--- LTR)

DIAGNOSIS

Recommendation

We recommend an early resample to monitor this condition.

Wear

All component wear rates are normal.

Grease Condition

Grease consistency has changed by 2-1/2 NLGI grades from NLGI 1 to 000-00.

Contaminants

There is no indication of any contamination in the grease.

SAMPLE INFORMATION

	method	limit/base	current	history1	history2
Sample Number	Client Info		PP0835294	PP0546459	---
Sample Date	Client Info		18 Sep 2023	13 Sep 2021	---
Machine Age	yrs	Client Info	15	0	---
Grease Age	yrs	Client Info	15	0	---
Grease Serviced	Client Info		Not Chngd	N/A	---
Sample Status			SEVERE	NORMAL	---

WEAR METALS

	method	limit/base	current	history1	history2
PQ	ASTM D8184*	>200	800	510	---
Iron	ppm	ASTM D5185(m)	>250	98	142
Chromium	ppm	ASTM D5185(m)	>10	<1	<1
Nickel	ppm	ASTM D5185(m)	>5	<1	<1
Cadmium	ppm	ASTM D5185(m)		0	0
Titanium	ppm	ASTM D5185(m)		0	0
Vanadium	ppm	ASTM D5185(m)		0	0
Lead	ppm	ASTM D5185(m)	>25	0	0
Copper	ppm	ASTM D5185(m)	>75	<1	<1
Tin	ppm	ASTM D5185(m)	>5	0	<1
Silver	ppm	ASTM D5185(m)	>5	<1	0

ADDITIVES

	method	limit/base	current	history1	history2
Boron	ppm	ASTM D5185(m)	0	<1	2
Magnesium	ppm	ASTM D5185(m)	0	0	0
Manganese	ppm	ASTM D5185(m)	0	0	<1
Molybdenum	ppm	ASTM D5185(m)	0	0	<1
Phosphorus	ppm	ASTM D5185(m)	5	4	6
Zinc	ppm	ASTM D5185(m)	20	13	15
Antimony	ppm	ASTM D5185(m)	0	0	0

THICKENER/SOAP

	method	limit/base	current	history1	history2
Aluminum	ppm	ASTM D5185(m)	0	0	<1
Barium	ppm	ASTM D5185(m)	0	<1	0
Calcium	ppm	ASTM D5185(m)	40	22	30
Sodium	ppm	ASTM D5185(m)	2	3	2
Lithium	ppm	ASTM D5185(m)	120	103	123
Sulfur	ppm	ASTM D5185(m)	650	613	681

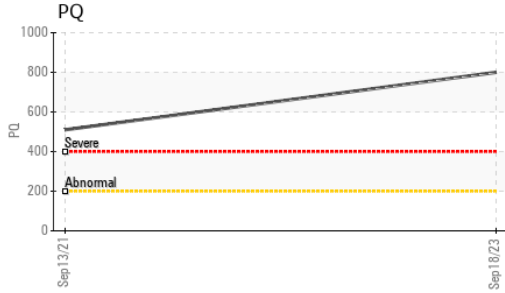
CONTAMINANTS

	method	limit/base	current	history1	history2
Silicon	ppm	ASTM D5185(m)	>150	<1	<1
Potassium	ppm	ASTM D5185(m)		<1	<1

GREASE CONDITION

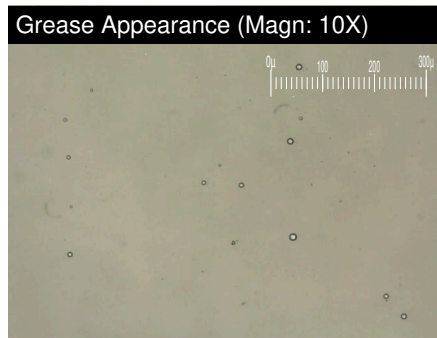
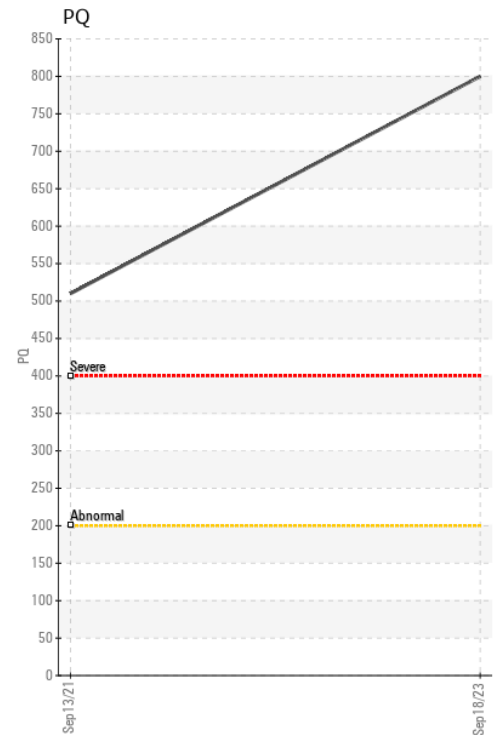
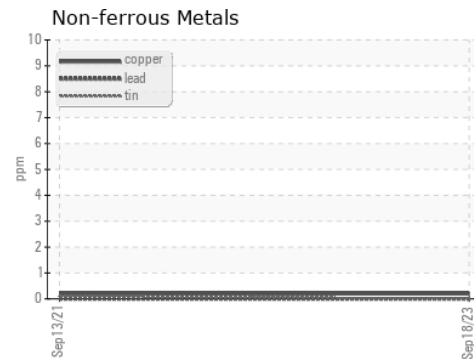
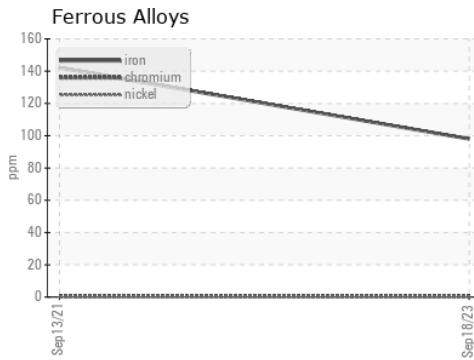
	method	limit/base	current	history1	history2
Grease Color	Visual*	Brown	Brown	Tan	---
Texture	In-house*		Buttery	Short fiber	---
NLGI Consistency	NLGI Scale SKF Method*	1	000-00	00-0	---

GREASE ANALYSIS



SAMPLE IMAGES	method	limit/base	current	history1	history2
Color					no image
Bottom					no image
PrtFilter					no image

GRAPHS



Laboratory : WearCheck - C8-1175 Appleby Line, Burlington, ON L7L 5H9 Vestas American Wind Technology Inc.
Sample No. : PP0835294 **Received** : 20 Oct 2023
Lab Number : 02590799 **Diagnosed** : 23 Oct 2023
Unique Number : 5659865 **Diagnostician** : Bill Quesnel
Test Package : GRS 1 (Additional Tests: BottomAnalysis)

To discuss this sample report, contact Customer Service at 1-800-268-2131.
 Test denoted (*) outside scope of accreditation, (m) method modified, (e) tested at external lab.
 Validity of results and interpretation are based on the sample and information as supplied.

1417 NW Everett Street
 Portland, OR
 US 97209
 Contact: Eric German
 erger@vestas.com
 T: (519)368-7500
 F: (519)368-7535