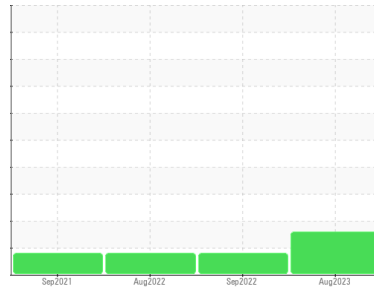




PROBLEM SUMMARY

Area
Saugeen Shores SP-17701
 Machine ID
14K12
 Component
Grease
 Fluid
SKF LGWM 1 (--- LTR)

Sample Rating Trend



VISCOSITY



COMPONENT CONDITION SUMMARY

No relevant graphs to display

RECOMMENDATION

We recommend an early resample to monitor this condition.

PROBLEMATIC TEST RESULTS

Sample Status				SEVERE	ABNORMAL	MARGINAL
NLGI Consistency	NLGI Scale	SKF Method*	1	000-00	000	00-0
PrtFilter						

Customer Id: VESTAS
Sample No.: PP0835293
Lab Number: 02590800
Test Package: GRS 1



To manage this report scan the QR code

To discuss the diagnosis or test data:
 Bill Quesnel CLS,OMA II,MLA-III,LLA-I +1
 (289)291-4641 x4641
Bill.Quesnel@wearcheck.com

To change component or sample information:
 Gloria Gonzalez +1 (289)291-4643 x4643
gloria.gonzalez@wearcheck.com

RECOMMENDED ACTIONS

Action	Status	Date	Done By	Description
Resample	---	---	?	We recommend an early resample to monitor this condition.

HISTORICAL DIAGNOSIS

20 Sep 2022 Diag: Bill Quesnel

VISCOSITY



We recommend that you re-grease the gear/bearing. We recommend an early resample to monitor this condition. All component wear rates are normal. There is no indication of any contamination in the grease. The grease NLGI grade has changed from 1 to 000.

view report



17 Aug 2022 Diag: Bill Quesnel

VISCOSITY



Resample at the next service interval to monitor. All component wear rates are normal. There is no indication of any contamination in the grease. The NLGI grade has decreased from 1 to 00-0. The condition of the grease is acceptable for the time in service.

view report



23 Sep 2021 Diag: Bill Quesnel

VISCOSITY



Resample at the next service interval to monitor. All component wear rates are normal. There is no indication of any contamination in the grease. The NLGI grade has dropped 1-1/2 NLGI grades. The condition of the grease is acceptable for the time in service.

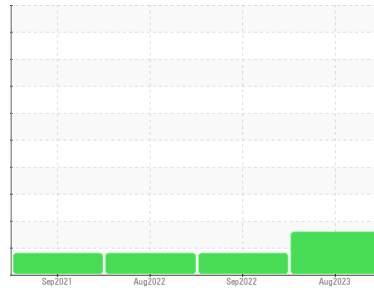
view report





GREASE ANALYSIS

Sample Rating Trend



VISCOSITY



Area
Saugen Shores SP-17701
 Machine ID
14K12
 Component
Grease
 Fluid
SKF LGWM 1 (--- LTR)

DIAGNOSIS

Recommendation

We recommend an early resample to monitor this condition.

Wear

All component wear rates are normal.

Grease Condition

Grease consistency has changed by 2-1/2 NLGI grades from NLGI 1 to 000-00.

Contaminants

There is no indication of any contamination in the grease.

SAMPLE INFORMATION

	method	limit/base	current	history1	history2
Sample Number	Client Info		PP0835293	WC0632869	WC0632852
Sample Date	Client Info		23 Aug 2023	20 Sep 2022	17 Aug 2022
Machine Age	yrs	Client Info	15	14	14
Grease Age	yrs	Client Info	15	14	14
Grease Serviced	Client Info		Not Chngd	Not Chngd	Not Chngd
Sample Status			SEVERE	ABNORMAL	MARGINAL

WEAR METALS

	method	limit/base	current	history1	history2	
PQ	ASTM D8184*	>200	150	100	70	
Iron	ppm	ASTM D5185(m)	>250	54	53	112
Chromium	ppm	ASTM D5185(m)	>10	0	0	<1
Nickel	ppm	ASTM D5185(m)	>5	<1	0	<1
Cadmium	ppm	ASTM D5185(m)		0	0	0
Titanium	ppm	ASTM D5185(m)		0	0	0
Vanadium	ppm	ASTM D5185(m)		0	0	0
Lead	ppm	ASTM D5185(m)	>25	0	0	0
Copper	ppm	ASTM D5185(m)	>75	<1	0	0
Tin	ppm	ASTM D5185(m)	>5	0	0	0
Silver	ppm	ASTM D5185(m)	>5	<1	0	0

ADDITIVES

	method	limit/base	current	history1	history2	
Boron	ppm	ASTM D5185(m)	0	<1	1	1
Magnesium	ppm	ASTM D5185(m)	0	<1	0	<1
Manganese	ppm	ASTM D5185(m)	0	0	<1	<1
Molybdenum	ppm	ASTM D5185(m)	0	0	0	0
Phosphorus	ppm	ASTM D5185(m)	5	5	5	9
Zinc	ppm	ASTM D5185(m)	20	14	14	16
Antimony	ppm	ASTM D5185(m)	0	0	<1	<1

THICKENER/SOAP

	method	limit/base	current	history1	history2	
Aluminum	ppm	ASTM D5185(m)	0	0	<1	<1
Barium	ppm	ASTM D5185(m)	0	<1	0	0
Calcium	ppm	ASTM D5185(m)	40	28	26	26
Sodium	ppm	ASTM D5185(m)	2	3	2	3
Lithium	ppm	ASTM D5185(m)	120	105	102	118
Sulfur	ppm	ASTM D5185(m)	650	634	642	660

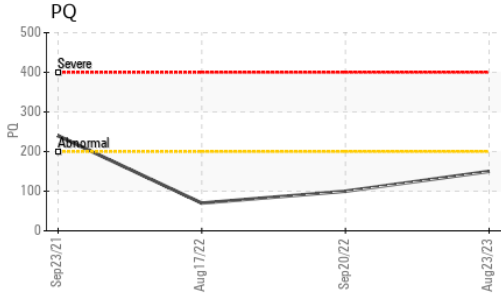
CONTAMINANTS

	method	limit/base	current	history1	history2	
Silicon	ppm	ASTM D5185(m)	>150	<1	<1	<1
Potassium	ppm	ASTM D5185(m)		15	<1	0

GREASE CONDITION

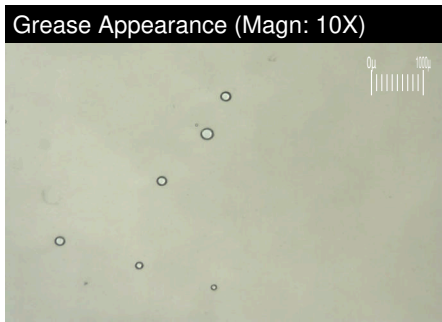
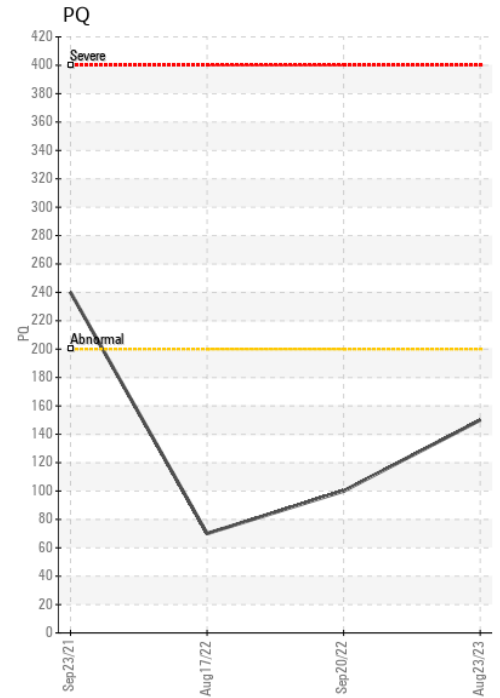
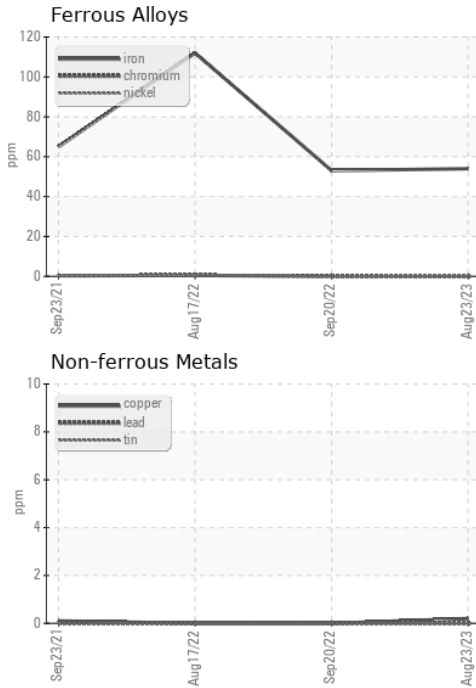
	method	limit/base	current	history1	history2
Grease Color	Visual*	Brown	Brown	Brown	Brown
Texture	In-house*		Buttery	Buttery	Buttery
NLGI Consistency	NLGI Scale SKF Method*	1	000-00	000	00-00

GREASE ANALYSIS



SAMPLE IMAGES	method	limit/base	current	history1	history2
Color					
Bottom					
PrtFilter					

GRAPHS



Laboratory : WearCheck - C8-1175 Appleby Line, Burlington, ON L7L 5H9 Vestas American Wind Technology Inc.
Sample No. : PP0835293 **Received** : 20 Oct 2023
Lab Number : 02590800 **Diagnosed** : 23 Oct 2023
Unique Number : 5659866 **Diagnostician** : Bill Quesnel
Test Package : GRS 1 (Additional Tests: BottomAnalysis)

To discuss this sample report, contact Customer Service at 1-800-268-2131.
 Test denoted (*) outside scope of accreditation, (m) method modified, (e) tested at external lab.
 Validity of results and interpretation are based on the sample and information as supplied.

1417 NW Everett Street
 Portland, OR
 US 97209
 Contact: Nicole Philippi
 NiPhi@vestas.com
 T: (503)327-7683
 F: (503)327-0247