



# OIL ANALYSIS REPORT

Sample Rating Trend

ISO

Area  
**MAXI-PAYSAGE INC. [02591216]**  
 Machine Id  
**TEREX PS6000 BR05-01 (S/N S6BD1N0ZE508EU586)**  
 Component  
**Hydraulic System**  
 Fluid  
**PANOLIN HLP SYNTH 46 (60 LTR)**



## DIAGNOSIS

### Recommendation

Nous recommandons le remplacement des filtres de ce composant. Nous vous recommandons d'échantillonner de nouveau dès que possible afin de contrôler la situation.

### Wear

Les taux d'usure de tous les composants sont normaux.

### Contamination

Il y a une quantité modérée de particules (de 4 à 14 microns) dans l'huile. Il y a une faible concentration (<5.0%) d'huile minérale présente dans le fluide. La teneur en eau est négligeable. La propreté du système est supérieure à la limite acceptable pour votre objectif de propreté ISO 4406.

### Fluid Condition

Le AN est acceptable pour ce fluide. l'huile peut encore servir si la contamination peut être réduite à un niveau acceptable.

## SAMPLE INFORMATION

method	limit/base	current	history1	history2
Sample Number	Client Info	<b>WC</b>	---	---
Sample Date	Client Info	<b>18 Oct 2023</b>	---	---
Machine Age	hrs Client Info	<b>5683</b>	---	---
Oil Age	hrs Client Info	<b>0</b>	---	---
Oil Changed	Client Info	<b>N/A</b>	---	---
Sample Status		<b>ABNORMAL</b>	---	---

## WEAR METALS

method	limit/base	current	history1	history2
Iron ppm ASTM D5185(m)	>20	<1	---	---
Chromium ppm ASTM D5185(m)	>10	0	---	---
Nickel ppm ASTM D5185(m)	>10	0	---	---
Titanium ppm ASTM D5185(m)		0	---	---
Silver ppm ASTM D5185(m)		<1	---	---
Aluminum ppm ASTM D5185(m)	>10	<1	---	---
Lead ppm ASTM D5185(m)	>10	<1	---	---
Copper ppm ASTM D5185(m)	>75	<1	---	---
Tin ppm ASTM D5185(m)	>10	0	---	---
Antimony ppm ASTM D5185(m)		0	---	---
Vanadium ppm ASTM D5185(m)		0	---	---
Beryllium ppm ASTM D5185(m)		0	---	---
Cadmium ppm ASTM D5185(m)		0	---	---

## ADDITIVES

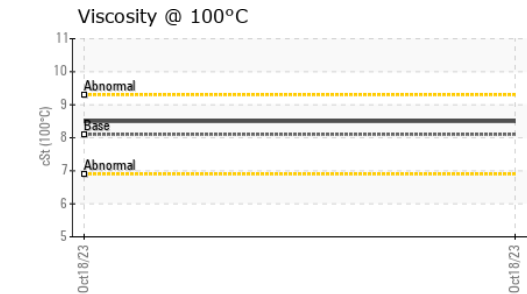
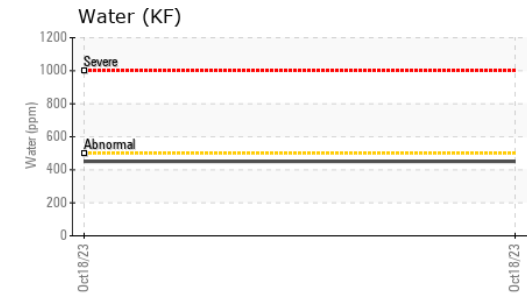
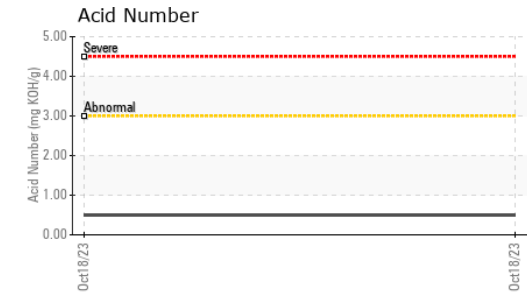
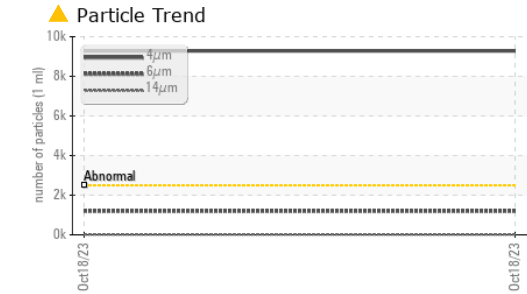
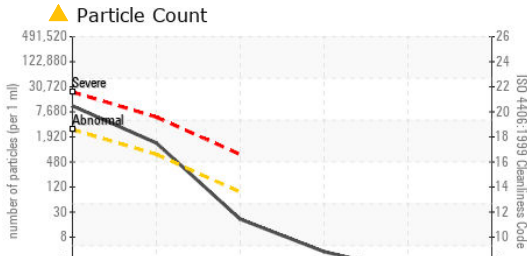
method	limit/base	current	history1	history2
Boron ppm ASTM D5185(m)	0	<1	---	---
Barium ppm ASTM D5185(m)	0	<1	---	---
Molybdenum ppm ASTM D5185(m)	0	0	---	---
Manganese ppm ASTM D5185(m)	0	0	---	---
Magnesium ppm ASTM D5185(m)	0	<1	---	---
Calcium ppm ASTM D5185(m)	0	35	---	---
Phosphorus ppm ASTM D5185(m)	1700	1497	---	---
Zinc ppm ASTM D5185(m)	0	20	---	---
Sulfur ppm ASTM D5185(m)	1350	1500	---	---
Lithium ppm ASTM D5185(m)		<1	---	---

## CONTAMINANTS

method	limit/base	current	history1	history2
Silicon ppm ASTM D5185(m)	>20	<1	---	---
Sodium ppm ASTM D5185(m)		1	---	---
Potassium ppm ASTM D5185(m)	>20	0	---	---
Water % ASTM D6304*	>0.05	0.045	---	---
ppm Water ppm ASTM D6304*	>500	450.5	---	---

## INFRA-RED

method	limit/base	current	history1	history2
Soot % ASTM D7844*		0	---	---
Nitration Abs/cm ASTM D7624*		4.0	---	---
Sulfation Abs./1mm ASTM D7415*		153.8	---	---
Mineral Oil Content % ASTM D7418*	<5.0%	<5.0	---	---



FLUID CLEANLINESS	method	limit/base	current	history1	history2
Particles >4µm	ASTM D7647	>2500	▲ 9280	---	---
Particles >6µm	ASTM D7647	>640	▲ 1201	---	---
Particles >14µm	ASTM D7647	>80	18	---	---
Particles >21µm	ASTM D7647	>20	3	---	---
Particles >38µm	ASTM D7647	>4	1	---	---
Particles >71µm	ASTM D7647	>3	1	---	---
Oil Cleanliness	ISO 4406 (c)	>18/16/13	▲ 20/17/11	---	---

FLUID DEGRADATION	method	limit/base	current	history1	history2
Oxidation	Abs./1mm	ASTM D7414*	147.4	---	---
Acid Number (AN)	mg KOH/g	ASTM D974*	0.50	---	---

VISUAL	method	limit/base	current	history1	history2	
White Metal	scalar	Visual*	NONE	NONE	---	---
Yellow Metal	scalar	Visual*	NONE	NONE	---	---
Precipitate	scalar	Visual*	NONE	NONE	---	---
Silt	scalar	Visual*	NONE	NONE	---	---
Debris	scalar	Visual*	NONE	NONE	---	---
Sand/Dirt	scalar	Visual*	NONE	NONE	---	---
Appearance	scalar	Visual*	NORML	NORML	---	---
Odor	scalar	Visual*	NORML	NORML	---	---
Emulsified Water	scalar	Visual*	>0.05	NEG	---	---
Free Water	scalar	Visual*		NEG	---	---

FLUID PROPERTIES	method	limit/base	current	history1	history2	
Visc @ 40°C	cSt	ASTM D7279(m)	47.0	47.4	---	---
Visc @ 100°C	cSt	ASTM D7279(m)	8.1	8.5	---	---
Viscosity Index (VI)	Scale	ASTM D2270*	146	157	---	---

SAMPLE IMAGES	method	limit/base	current	history1	history2
Color				no image	no image
Bottom				no image	no image



**Laboratory** : WearCheck - C8-1175 Appleby Line, Burlington, ON L7L 5H9  
**Sample No.** : WC  
**Lab Number** : 02591217  
**Unique Number** : 5668296  
**Test Package** : MOB 2 ( Additional Tests: TAN Man )

To discuss this sample report, contact Customer Service at 1-800-268-2131.  
 Test denoted (\*) outside scope of accreditation, (m) method modified, (e) tested at external lab.  
 Validity of results and interpretation are based on the sample and information as supplied.

**Envirolin Canada**  
 520 rue Adanac  
 Quebec, QC  
 CA G1C 7B7  
 Contact: Patrick Levesque  
 patrick.levesque@envirolin.com  
 T: (418)623-1216  
 F: (418)660-8889



# MINERAL OIL CONTENT REPORT

PASS

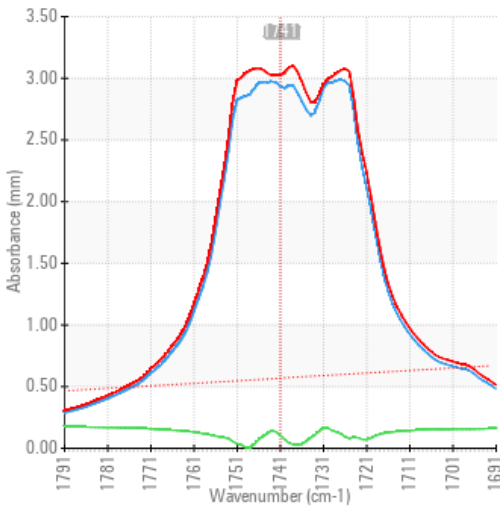


Area  
**MAXI-PAYSAGE INC. [02591216]**  
 Machine Id  
**TEREX PS6000 BR05-01 (S/N S6BD1N0ZE508EU586)**  
 Component  
**Hydraulic System**  
 Fluid  
**PANOLIN HLP SYNTH 46 (60 LTR)**

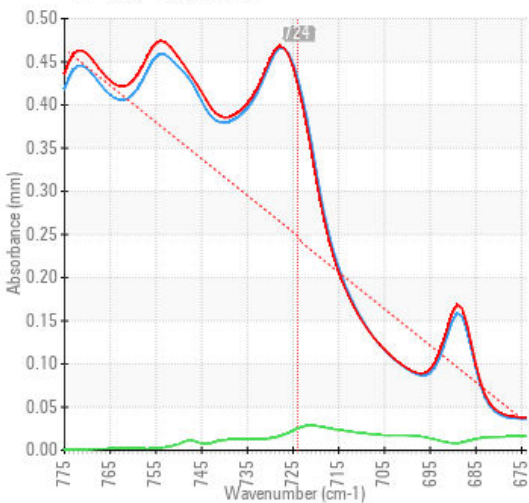
## SPECTRAL ANALYSIS

		method	limit/base	current	history1	history2
Zinc	ppm	ASTM D5185(m)	0	<b>20</b>	---	---
Mineral Oil Content	%	ASTM D7418*	<5.0%	<b>&lt;5.0</b>	---	---

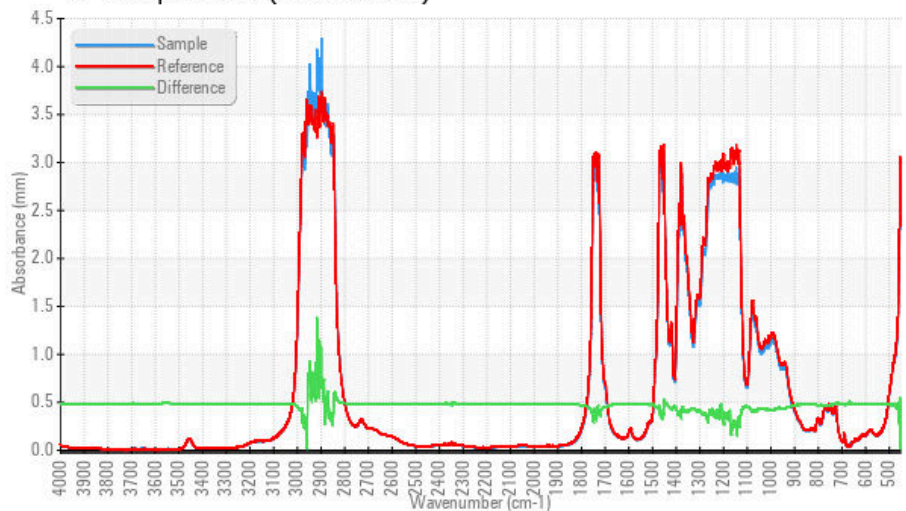
### FT-IR - Esters I



### FT-IR - Esters II



### FT-IR Spectrum (Absorbance)



ISO 17025:2017  
 Accredited  
 Laboratory

**Laboratory** : WearCheck - C8-1175 Appleby Line, Burlington, ON L7L 5H9  
**Sample No.** : WC  
**Lab Number** : 02591217  
**Unique Number** : 5668296  
**Test Package** : MOB 2 ( Additional Tests: TAN Man )

**Received** : 23 Oct 2023  
**Diagnosed** : 03 Nov 2023  
**Diagnostician** : Bill Quesnel

To discuss this sample report, contact Customer Service at 1-800-268-2131.  
 Test denoted (\*) outside scope of accreditation, (m) method modified, (e) tested at external lab.  
 Validity of results and interpretation are based on the sample and information as supplied.

### Envirolin Canada

520 rue Adanac  
 Quebec, QC  
 CA G1C 7B7  
 Contact: Patrick Levesque  
 patrick.levesque@envirolin.com  
 T: (418)623-1216  
 F: (418)660-8889

*This page left intentionally blank*