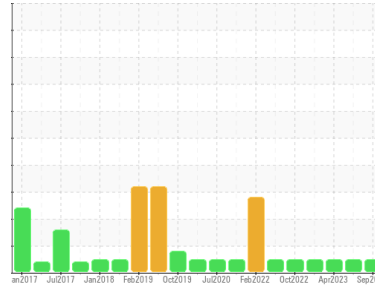




OIL ANALYSIS REPORT

Sample Rating Trend



NORMAL



Area
[412498401]
 Machine Id
1000029765 - HIGH PRESSURE WATER (S/N 15-GTOHP682)
 Component
Circulating Pump
 Fluid
TOTAL FINA NEVASTANE FG AW 68 (--- GAL)

DIAGNOSIS

Recommendation

Resample at the next service interval to monitor.
 NOTE: Please provide information regarding reservoir capacity, filter type and micron rating with next sample.

Wear

All component wear rates are normal.

Contamination

There is no indication of any contamination in the oil.

Fluid Condition

The AN level is acceptable for this fluid. The condition of the oil is suitable for further service.

SAMPLE INFORMATION

method	limit/base	current	history1	history2
Sample Number	Client Info	WC0848521	WC0823725	WC0782551
Sample Date	Client Info	25 Sep 2023	04 Jul 2023	10 Apr 2023
Machine Age	hrs	0	0	0
Oil Age	hrs	0	0	0
Oil Changed	Client Info	N/A	N/A	N/A
Sample Status		NORMAL	NORMAL	NORMAL

WEAR METALS

method	limit/base	current	history1	history2
PQ	ASTM D8184*	0	0	0
Iron	ppm ASTM D5185(m) >90	4	4	2
Chromium	ppm ASTM D5185(m) >5	0	0	0
Nickel	ppm ASTM D5185(m) >5	<1	0	0
Titanium	ppm ASTM D5185(m) >3	0	0	0
Silver	ppm ASTM D5185(m) >3	<1	0	0
Aluminum	ppm ASTM D5185(m) >7	<1	0	0
Lead	ppm ASTM D5185(m) >12	<1	<1	<1
Copper	ppm ASTM D5185(m) >30	14	10	6
Tin	ppm ASTM D5185(m) >9	0	0	0
Antimony	ppm ASTM D5185(m)	0	0	0
Vanadium	ppm ASTM D5185(m)	0	0	0
Beryllium	ppm ASTM D5185(m)	0	0	0
Cadmium	ppm ASTM D5185(m)	0	0	0

ADDITIVES

method	limit/base	current	history1	history2
Boron	ppm ASTM D5185(m)	<1	<1	<1
Barium	ppm ASTM D5185(m)	0	0	0
Molybdenum	ppm ASTM D5185(m)	0	<1	<1
Manganese	ppm ASTM D5185(m)	0	0	0
Magnesium	ppm ASTM D5185(m)	6	6	6
Calcium	ppm ASTM D5185(m)	6	6	5
Phosphorus	ppm ASTM D5185(m)	176	182	198
Zinc	ppm ASTM D5185(m)	26	24	23
Sulfur	ppm ASTM D5185(m)	219	133	144
Lithium	ppm ASTM D5185(m)	<1	<1	<1

CONTAMINANTS

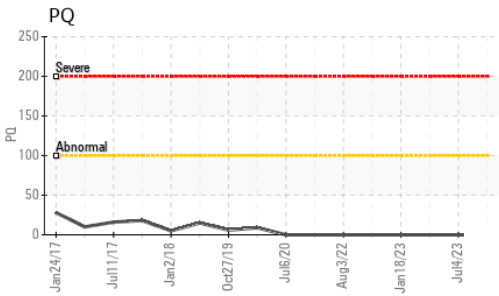
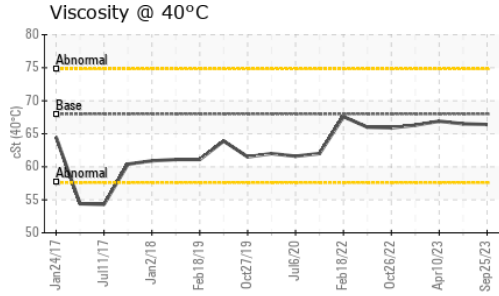
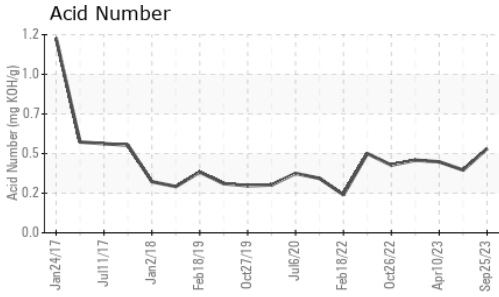
method	limit/base	current	history1	history2
Silicon	ppm ASTM D5185(m) >60	<1	2	1
Sodium	ppm ASTM D5185(m)	1	1	1
Potassium	ppm ASTM D5185(m) >20	<1	<1	<1

FLUID DEGRADATION

method	limit/base	current	history1	history2
Acid Number (AN)	mg KOH/g ASTM D974*	0.51	0.38	0.43



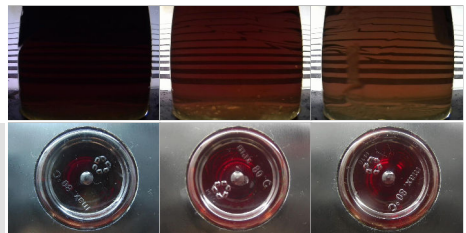
OIL ANALYSIS REPORT



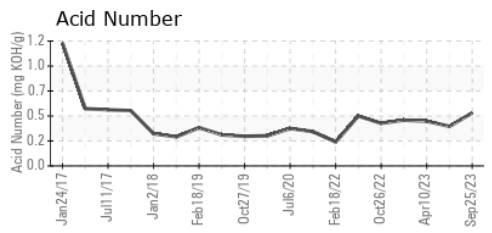
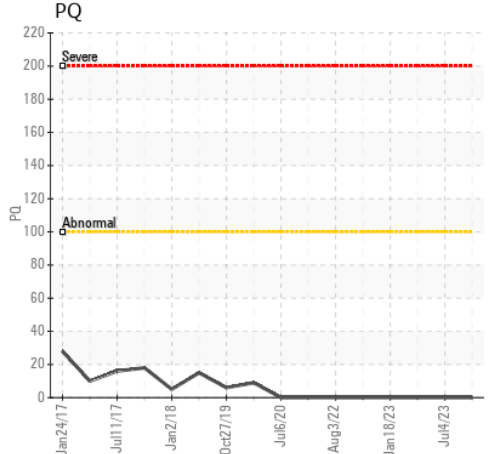
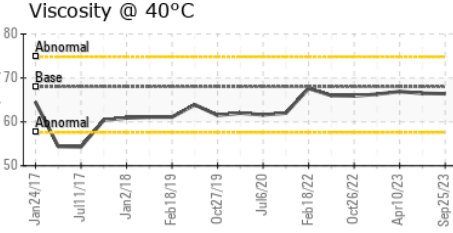
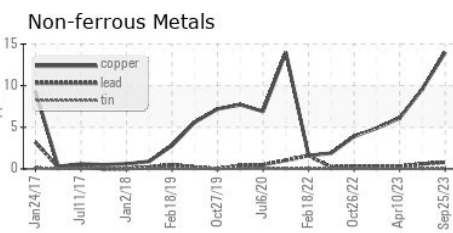
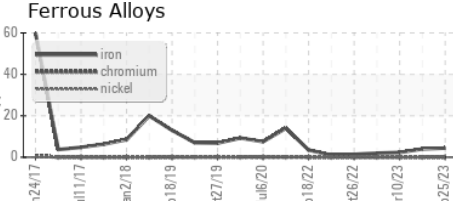
VISUAL	method	limit/base	current	history1	history2
White Metal	scalar	Visual*	NONE	NONE	NONE
Yellow Metal	scalar	Visual*	NONE	NONE	NONE
Precipitate	scalar	Visual*	NONE	NONE	NONE
Silt	scalar	Visual*	NONE	NONE	NONE
Debris	scalar	Visual*	NONE	NONE	NONE
Sand/Dirt	scalar	Visual*	NONE	NONE	NONE
Appearance	scalar	Visual*	NORML	NORML	NORML
Odor	scalar	Visual*	NORML	NORML	NORML
Emulsified Water	scalar	Visual*	>.1	NEG	NEG
Free Water	scalar	Visual*		NEG	NEG

FLUID PROPERTIES	method	limit/base	current	history1	history2
Visc @ 40°C	cSt	ASTM D7279(m)	68	66.5	66.9

SAMPLE IMAGES	method	limit/base	current	history1	history2
Color					
Bottom					



GRAPHS



Laboratory : WearCheck - C8-1175 Appleby Line, Burlington, ON L7L 5H9
Sample No. : WC0848521 **Received** : 24 Oct 2023
Lab Number : 02591415 **Diagnosed** : 25 Oct 2023
Unique Number : 5668494 **Diagnostician** : Wes Davis
Test Package : IND 2 (Additional Tests: TAN Man)

Cargill Meat Solutions
 165 Dunlop Drive
 Guelph, ON
 CA N1L 1P4
 Contact: Jakub Posluszny
 jakub_posluszny@cargill.com
 T: (519)823-5200
 F: (519)823-5893

To discuss this sample report, contact Customer Service at 1-800-268-2131.
 Test denoted (*) outside scope of accreditation, (m) method modified, (e) tested at external lab.
 Validity of results and interpretation are based on the sample and information as supplied.