



FUEL REPORT

Sample Rating Trend

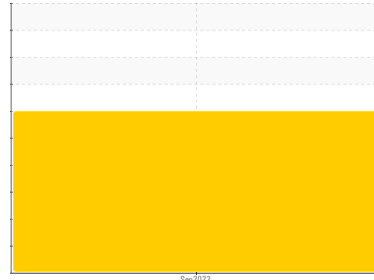
ISO



Machine Id
19-GRES-01-XX1-F

Component
Diesel Fuel

Fluid
No.1 DIESEL FUEL (ULTRALOW SULPHUR) (--- GAL)



DIAGNOSIS

Recommendation

We advise that you check all areas where contaminants can enter the system. Laboratory test indicate that this fuel is suitable for use and meets all test requirements. We advise that you perform a filter service, and use off-line filtration to improve the cleanliness of the system fluid. The air breather requires service. If unrated, we recommend that you replace with a suitable micron rated and/or desiccant air breather. If rated, we recommend that you service/replace the breather. We advise that you filter this fluid before use. Resample in 30-45 days to monitor this situation.

Corrosion

(not applicable)

Contaminants

There is a high amount of particulates (2 to 100 microns in size) present in the fuel. The water content is negligible.

Fuel Condition

The fuel is still serviceable provided that the contaminant(s) can be reduced to acceptable levels. All laboratory tests indicate that this sample meets specifications for No.1 ultra-low-sulfur diesel fuel (US EPA/CGSB-3.517-3 type A).

SAMPLE INFORMATION		method	limit/base	current	history1	history2
Sample Number	Client Info			WC0560844	---	---
Sample Date	Client Info			02 Sep 2023	---	---
Machine Age	hrs	Client Info		0	---	---
Sample Status				SEVERE	---	---

PHYSICAL PROPERTIES		method	limit/base	current	history1	history2
Specific Gravity		ASTM D1298*	0.825	0.809	---	---
Fuel Color	text	Visual Screen*	Clear	Yellow	---	---
Visc @ 40°C	cSt	ASTM D7279(m)	1.8	1.6	---	---
Pensky-Martens Flash Point	°C	ASTM D7215*	38	55.3	---	---

SULFUR CONTENT		method	limit/base	current	history1	history2
Sulfur	ppm	ASTM D5185(m)	10	4	---	---

DISTILLATION		method	limit/base	current	history1	history2
Initial Boiling Point	°C	ASTM D2887*	159	164	---	---
5% Distillation Point	°C	ASTM D2887*		177	---	---
10% Distill Point	°C	ASTM D2887*	184	180	---	---
15% Distillation Point	°C	ASTM D2887*		184	---	---
20% Distill Point	°C	ASTM D2887*	196	187	---	---
30% Distill Point	°C	ASTM D2887*	205	194	---	---
40% Distill Point	°C	ASTM D2887*	216	202	---	---
50% Distill Point	°C	ASTM D2887*	227	211	---	---
60% Distill Point	°C	ASTM D2887*	238	220	---	---
70% Distill Point	°C	ASTM D2887*	251	229	---	---
80% Distill Point	°C	ASTM D2887*	264	243	---	---
85% Distillation Point	°C	ASTM D2887*		257	---	---
90% Distill Point	°C	ASTM D2887*	288	272	---	---
95% Distillation Point	°C	ASTM D2887*		303	---	---
Final Boiling Point	°C	ASTM D2887*	309	342	---	---

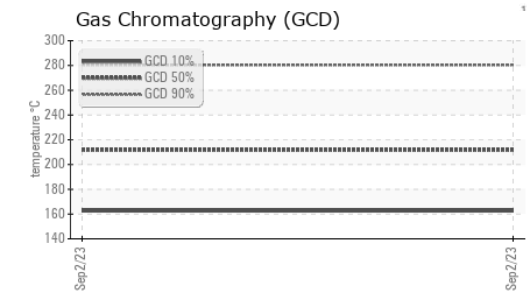
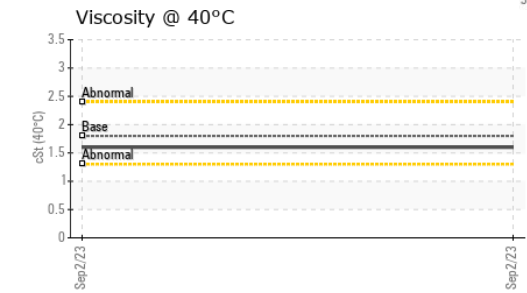
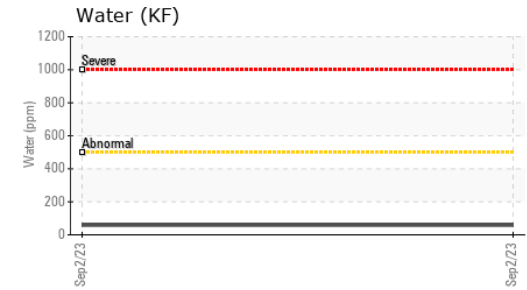
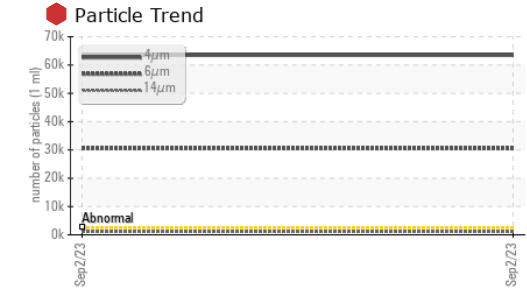
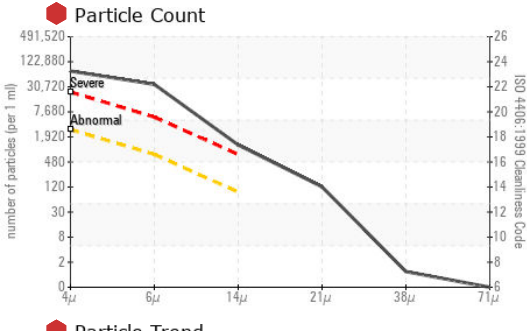
IGNITION QUALITY		method	limit/base	current	history1	history2
API Gravity		ASTM D1298*	40.1	43	---	---
Cetane Index		ASTM D4737*	<40.0	47	---	---

CONTAMINANTS		method	limit/base	current	history1	history2
Silicon	ppm	ASTM D5185(m)	<1.0	0	---	---
Sodium	ppm	ASTM D5185(m)	<0.1	<1	---	---
Potassium	ppm	ASTM D5185(m)	<0.1	0	---	---
Water	%	ASTM D6304*	<0.05	0.005	---	---
ppm Water	ppm	ASTM D6304*	<500	58.4	---	---

FLUID CLEANLINESS		method	limit/base	current	history1	history2
Particles >4µm		ASTM D7647	>2500	63461	---	---
Particles >6µm		ASTM D7647	>640	30513	---	---
Particles >14µm		ASTM D7647	>80	1080	---	---
Particles >21µm		ASTM D7647	>20	107	---	---
Particles >38µm		ASTM D7647	>4	1	---	---
Particles >71µm		ASTM D7647	>3	0	---	---
Oil Cleanliness		ISO 4406 (c)	>18/16/13	23/22/17	---	---



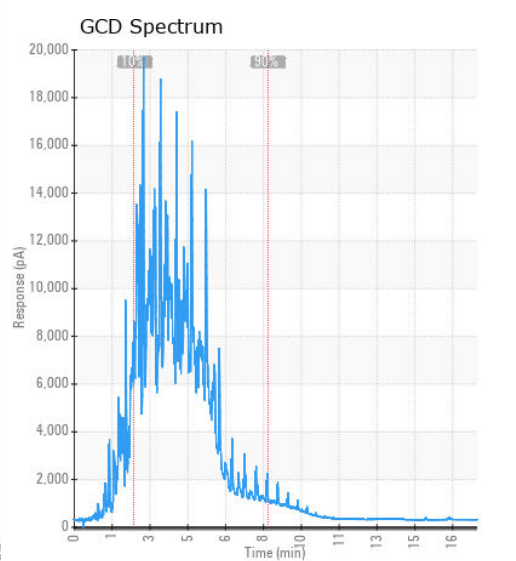
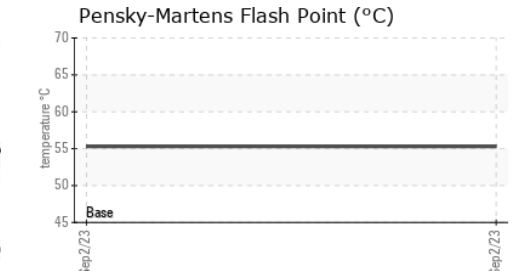
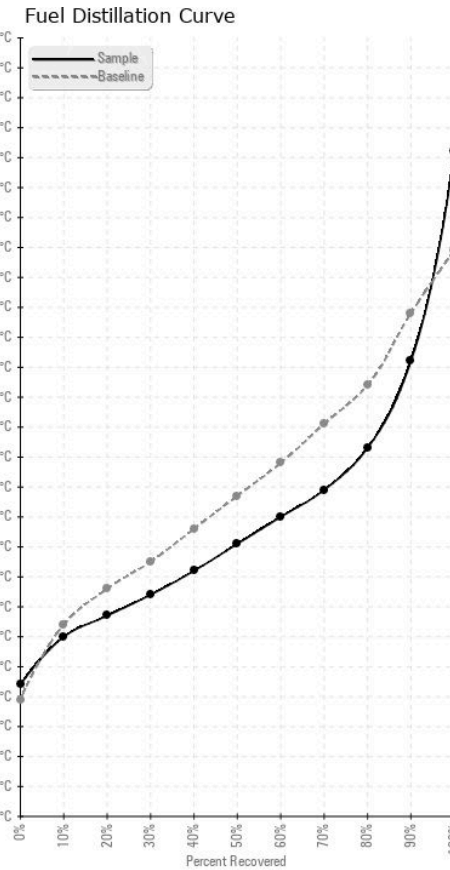
FUEL REPORT



HEAVY METALS	method	limit/base	current	history1	history2
Aluminum	ppm	ASTM D5185(m)	<0.1	0	---
Nickel	ppm	ASTM D5185(m)	<0.1	0	---
Lead	ppm	ASTM D5185(m)	<0.1	<1	---
Vanadium	ppm	ASTM D5185(m)	<0.1	0	---
Iron	ppm	ASTM D5185(m)	<0.1	<1	---
Calcium	ppm	ASTM D5185(m)	<0.1	0	---
Magnesium	ppm	ASTM D5185(m)	<0.1	0	---
Phosphorus	ppm	ASTM D5185(m)	<0.1	<1	---
Zinc	ppm	ASTM D5185(m)	<0.1	0	---

SAMPLE IMAGES	method	limit/base	current	history1	history2
Color				no image	no image
Bottom				no image	no image

GRAPHS



Laboratory : WearCheck - C8-1175 Appleby Line, Burlington, ON L7L 5H9
Sample No. : WC0560844
Lab Number : 02591557
Unique Number : 5668636
Test Package : FUEL (Additional Tests: CC Flash, GC-PercFuel, PrtCount)

Adrenalube - 9042628 Canada Inc
 3755 - E Boul Matte
 Brossard, QC
 CA J4Y 2P4
 Contact: Pierre Beauchamp
 support-tech@adrenalube.com
 T: (514)999-5546
 F:

To discuss this sample report, contact Customer Service at 1-800-268-2131.
 Test denoted (*) outside scope of accreditation, (m) method modified, (e) tested at external lab.
 Validity of results and interpretation are based on the sample and information as supplied.