

OIL ANALYSIS REPORT

Sample Rating Trend

NORMAL



Area
[6100183292]
Machine Id
GDM2433
Component
Diesel Fuel
Fluid
No.2 DIESEL FUEL (ULTRALOW SULPHUR) (--- GAL)

DIAGNOSIS

Recommendation

Veillez communiquer avec un représentant Wajax Power Systems au sujet de l'achat d'une trousse d'échantillonnage appropriée à vos besoins.

Corrosion

{sans objet}

Contaminants

Il n'y a aucune indication de contamination dans le composant (non confirmée).

Fuel Condition

La quantité de l'échantillonnage du fuel ne suffisait pas à déterminer sa condition et/ou sa classification.

SAMPLE INFORMATION		method	limit/base	current	history1	history2
Sample Number	Client Info			WA0020	---	---
Sample Date	Client Info			04 Oct 2023	---	---
Machine Age	hrs	Client Info		0	---	---
Sample Status				NORMAL	---	---

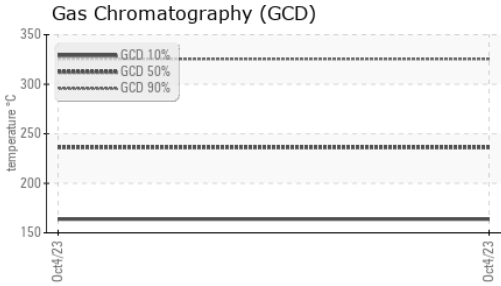
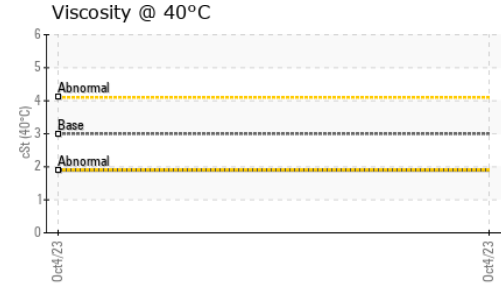
WEAR METALS		method	limit/base	current	history1	history2
Iron	ppm	ASTM D5185(m)	>2	<1	---	---
Chromium	ppm	ASTM D5185(m)	>2	0	---	---
Nickel	ppm	ASTM D5185(m)	>2	0	---	---
Titanium	ppm	ASTM D5185(m)	>2	0	---	---
Silver	ppm	ASTM D5185(m)	>2	0	---	---
Aluminum	ppm	ASTM D5185(m)	>2	0	---	---
Lead	ppm	ASTM D5185(m)	>2	0	---	---
Copper	ppm	ASTM D5185(m)	>2	0	---	---
Tin	ppm	ASTM D5185(m)	>2	0	---	---
Antimony	ppm	ASTM D5185(m)	>2	0	---	---
Vanadium	ppm	ASTM D5185(m)		0	---	---
Beryllium	ppm	ASTM D5185(m)	>2	0	---	---
Cadmium	ppm	ASTM D5185(m)		0	---	---

ADDITIVES		method	limit/base	current	history1	history2
Boron	ppm	ASTM D5185(m)	2	0	---	---
Barium	ppm	ASTM D5185(m)	2	0	---	---
Molybdenum	ppm	ASTM D5185(m)	2	0	---	---
Manganese	ppm	ASTM D5185(m)		0	---	---
Magnesium	ppm	ASTM D5185(m)	2	0	---	---
Calcium	ppm	ASTM D5185(m)	2	<1	---	---
Phosphorus	ppm	ASTM D5185(m)	2	<1	---	---
Zinc	ppm	ASTM D5185(m)	2	<1	---	---
Sulfur	ppm	ASTM D5185(m)	10	9	---	---
Lithium	ppm	ASTM D5185(m)		<1	---	---

CONTAMINANTS		method	limit/base	current	history1	history2
Silicon	ppm	ASTM D5185(m)	>10	<1	---	---
Sodium	ppm	ASTM D5185(m)	>5	<1	---	---
Potassium	ppm	ASTM D5185(m)	>20	0	---	---

VISUAL		method	limit/base	current	history1	history2
White Metal	scalar	Visual*	NONE	NONE	---	---
Yellow Metal	scalar	Visual*	NONE	NONE	---	---
Precipitate	scalar	Visual*	NONE	NONE	---	---
Silt	scalar	Visual*	NONE	NONE	---	---
Debris	scalar	Visual*	NONE	NONE	---	---
Sand/Dirt	scalar	Visual*	NONE	NONE	---	---
Appearance	scalar	Visual*	NORML	NORML	---	---
Odor	scalar	Visual*	NORML	NORML	---	---
Emulsified Water	scalar	Visual*	>0.05	NEG	---	---
Free Water	scalar	Visual*		NEG	---	---

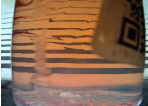

OIL ANALYSIS REPORT



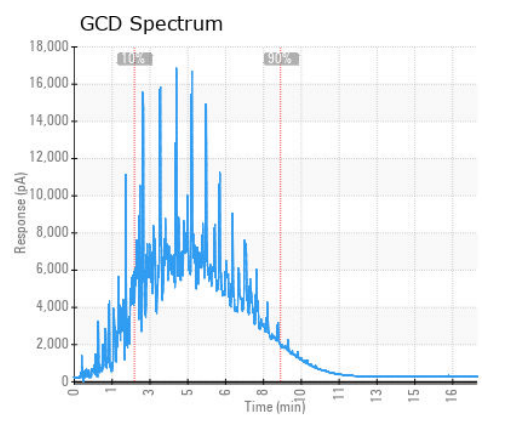
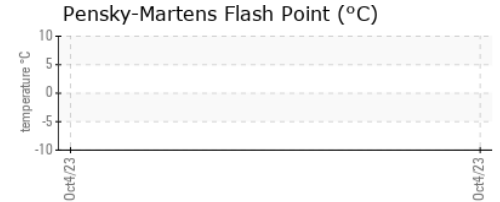
FLUID PROPERTIES		method	limit/base	current	history1	history2
Visc @ 40°C	cSt	ASTM D7279(m)	3.0	1.9	---	---

SIMULATED DISTILLATION (GCD)		method	limit/base	current	history1	history2
(GCD) % < 335°C	°C	ASTM D2887*		91.74	---	---
(GCD) Initial Boiling Point	°C	ASTM D2887*		103.0	---	---
(GCD) 5% Distillation Point	°C	ASTM D2887*		147.1	---	---
(GCD) 10% Distillation Point	°C	ASTM D2887*		163.8	---	---
(GCD) 20% Distillation Point	°C	ASTM D2887*		184.3	---	---
(GCD) 30% Distillation Point	°C	ASTM D2887*		203.3	---	---
(GCD) 40% Distillation Point	°C	ASTM D2887*		220.1	---	---
(GCD) 50% Distillation Point	°C	ASTM D2887*		236.2	---	---
(GCD) 60% Distillation Point	°C	ASTM D2887*		253.6	---	---
(GCD) 70% Distillation Point	°C	ASTM D2887*		272.4	---	---
(GCD) 80% Distillation Point	°C	ASTM D2887*		296.6	---	---
(GCD) 90% Distillation Point	°C	ASTM D2887*		325.5	---	---
(GCD) FBP% Distillation Point	°C	ASTM D2887*		443.8	---	---

SAMPLE IMAGES

	method	limit/base	current	history1	history2
Color				no image	no image
Bottom				no image	no image

GRAPHS



Laboratory : WearCheck - C8-1175 Appleby Line, Burlington, ON L7L 5H9
Sample No. : WA0020 **Received** : 24 Oct 2023
Lab Number : **02591561** **Diagnosed** : 25 Oct 2023
Unique Number : 5668640 **Diagnostician** : Kevin Marson
Test Package : MOB 1 (Additional Tests: GC-PercFuel, GCD)

Generatrice Drummond
 243 rue des ARTISANS
 SAINT-GERMAIN-DE-GRANTHAM, QC
 CA J0C 1K0
 Contact: Ghislain Parenteau
 gparenteau@wajax.com
 T: (819)398-6811
 F: (819)398-7022

To discuss this sample report, contact Customer Service at 1-800-268-2131.
 Test denoted (*) outside scope of accreditation, (m) method modified, (e) tested at external lab.
 Validity of results and interpretation are based on the sample and information as supplied.