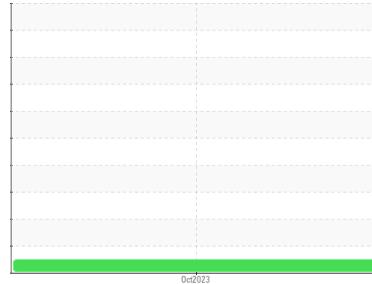


# OIL ANALYSIS REPORT

Sample Rating Trend

**NORMAL**



Area  
**[6100183292]**  
Machine Id  
**GDM2433A**  
Component  
**Diesel Fuel**  
Fluid  
**No.2 DIESEL FUEL (ULTRALOW SULPHUR) (--- GAL)**

## DIAGNOSIS

**Recommendation**  
Veuillez communiquer avec un représentant Wajax Power Systems au sujet de l'achat d'une trousse d'échantillonnage appropriée à vos besoins.

**Corrosion**  
{sans objet}

**Contaminants**  
Il n'y a aucune indication de contamination dans le composant (non confirmée).

**Fuel Condition**  
La quantité de l'échantillonnage du fuel ne suffisait pas à déterminer sa condition et/ou sa classification.

SAMPLE INFORMATION		method	limit/base	current	history1	history2
Sample Number	Client Info			<b>WA0020559</b>	---	---
Sample Date	Client Info			<b>04 Oct 2023</b>	---	---
Machine Age	hrs	Client Info		<b>0</b>	---	---
Sample Status				<b>NORMAL</b>	---	---

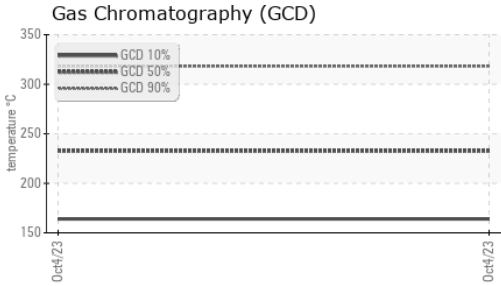
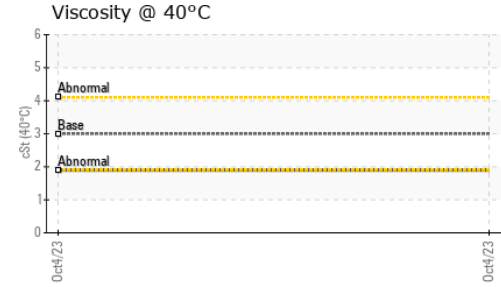
WEAR METALS		method	limit/base	current	history1	history2
Iron	ppm	ASTM D5185(m)	>2	<1	---	---
Chromium	ppm	ASTM D5185(m)	>2	0	---	---
Nickel	ppm	ASTM D5185(m)	>2	0	---	---
Titanium	ppm	ASTM D5185(m)	>2	0	---	---
Silver	ppm	ASTM D5185(m)	>2	0	---	---
Aluminum	ppm	ASTM D5185(m)	>2	0	---	---
Lead	ppm	ASTM D5185(m)	>2	0	---	---
Copper	ppm	ASTM D5185(m)	>2	0	---	---
Tin	ppm	ASTM D5185(m)	>2	0	---	---
Antimony	ppm	ASTM D5185(m)	>2	0	---	---
Vanadium	ppm	ASTM D5185(m)		0	---	---
Beryllium	ppm	ASTM D5185(m)	>2	0	---	---
Cadmium	ppm	ASTM D5185(m)		0	---	---

ADDITIVES		method	limit/base	current	history1	history2
Boron	ppm	ASTM D5185(m)	2	0	---	---
Barium	ppm	ASTM D5185(m)	2	0	---	---
Molybdenum	ppm	ASTM D5185(m)	2	0	---	---
Manganese	ppm	ASTM D5185(m)		0	---	---
Magnesium	ppm	ASTM D5185(m)	2	0	---	---
Calcium	ppm	ASTM D5185(m)	2	<1	---	---
Phosphorus	ppm	ASTM D5185(m)	2	<1	---	---
Zinc	ppm	ASTM D5185(m)	2	<1	---	---
Sulfur	ppm	ASTM D5185(m)	10	9	---	---
Lithium	ppm	ASTM D5185(m)		<1	---	---

CONTAMINANTS		method	limit/base	current	history1	history2
Silicon	ppm	ASTM D5185(m)	>10	<1	---	---
Sodium	ppm	ASTM D5185(m)	>5	<1	---	---
Potassium	ppm	ASTM D5185(m)	>20	0	---	---

VISUAL		method	limit/base	current	history1	history2
White Metal	scalar	Visual*	NONE	<b>NONE</b>	---	---
Yellow Metal	scalar	Visual*	NONE	<b>NONE</b>	---	---
Precipitate	scalar	Visual*	NONE	<b>NONE</b>	---	---
Silt	scalar	Visual*	NONE	<b>NONE</b>	---	---
Debris	scalar	Visual*	NONE	<b>NONE</b>	---	---
Sand/Dirt	scalar	Visual*	NONE	<b>NONE</b>	---	---
Appearance	scalar	Visual*	NORML	<b>NORML</b>	---	---
Odor	scalar	Visual*	NORML	<b>NORML</b>	---	---
Emulsified Water	scalar	Visual*	>0.05	<b>NEG</b>	---	---
Free Water	scalar	Visual*		<b>NEG</b>	---	---

# OIL ANALYSIS REPORT



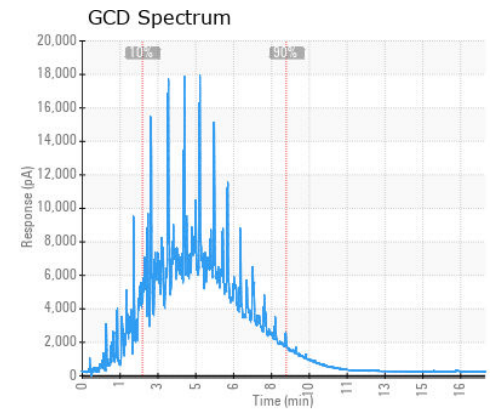
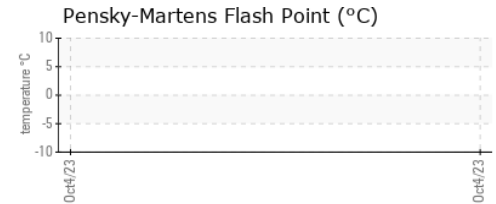
FLUID PROPERTIES		method	limit/base	current	history1	history2
Visc @ 40°C	cSt	ASTM D7279(m)	3.0	<b>1.9</b>	---	---

SIMULATED DISTILLATION (GCD)		method	limit/base	current	history1	history2
(GCD) % < 335°C	°C	ASTM D2887*		<b>92.97</b>	---	---
(GCD) Initial Boiling Point	°C	ASTM D2887*		<b>103.2</b>	---	---
(GCD) 5% Distillation Point	°C	ASTM D2887*		<b>147.3</b>	---	---
(GCD) 10% Distillation Point	°C	ASTM D2887*		<b>164.0</b>	---	---
(GCD) 20% Distillation Point	°C	ASTM D2887*		<b>184.1</b>	---	---
(GCD) 30% Distillation Point	°C	ASTM D2887*		<b>201.8</b>	---	---
(GCD) 40% Distillation Point	°C	ASTM D2887*		<b>217.3</b>	---	---
(GCD) 50% Distillation Point	°C	ASTM D2887*		<b>232.7</b>	---	---
(GCD) 60% Distillation Point	°C	ASTM D2887*		<b>248.3</b>	---	---
(GCD) 70% Distillation Point	°C	ASTM D2887*		<b>265.2</b>	---	---
(GCD) 80% Distillation Point	°C	ASTM D2887*		<b>287.0</b>	---	---
(GCD) 90% Distillation Point	°C	ASTM D2887*		<b>318.2</b>	---	---
(GCD) FBP% Distillation Point	°C	ASTM D2887*		<b>472.2</b>	---	---

SAMPLE IMAGES		method	limit/base	current	history1	history2
---------------	--	--------	------------	---------	----------	----------

Color					no image	no image
Bottom					no image	no image

## GRAPHS



**Laboratory** : WearCheck - C8-1175 Appleby Line, Burlington, ON L7L 5H9  
**Sample No.** : WA0020559  
**Lab Number** : **02591563**  
**Unique Number** : 5668642  
**Test Package** : MOB 1 ( Additional Tests: GC-PercFuel, GCD )

**Generatrice Drummond**  
 243 rue des ARTISANS  
 SAINT-GERMAIN-DE-GRANTHAM, QC  
 CA J0C 1K0  
 Contact: Valerie Poirier  
 poiirivalerie@generatricedrummond.com  
 T: (819)398-6811  
 F: (819)398-7022

To discuss this sample report, contact Customer Service at 1-800-268-2131.  
 Test denoted (\*) outside scope of accreditation, (m) method modified, (e) tested at external lab.  
 Validity of results and interpretation are based on the sample and information as supplied.