

OIL ANALYSIS REPORT

Sample Rating Trend

NORMAL



Area
[215323]
Machine Id
GD11459

Component
Diesel Fuel
Fluid

No.2 DIESEL FUEL (LOW-SULPHUR) (--- GAL)

DIAGNOSIS

Recommendation

Veillez communiquer avec un représentant Wajax Power Systems au sujet de l'achat d'une trousse d'échantillonnage appropriée à vos besoins.

Corrosion

{sans objet}

Contaminants

Il n'y a aucune indication de contamination dans le composant (non confirmée).

Fuel Condition

La quantité de l'échantillonnage du fuel ne suffisait pas à déterminer sa condition et/ou sa classification.

| SAMPLE INFORMATION | | method | limit/base | current | history1 | history2 |
|--------------------|-------------|-------------|------------|--------------------|----------|----------|
| Sample Number | Client Info | | | WA0019093 | --- | --- |
| Sample Date | Client Info | | | 19 Oct 2023 | --- | --- |
| Machine Age | hrs | Client Info | | 0 | --- | --- |
| Sample Status | | | | NORMAL | --- | --- |

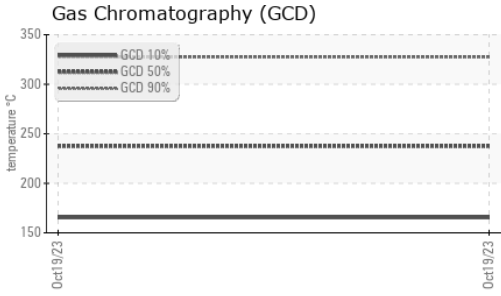
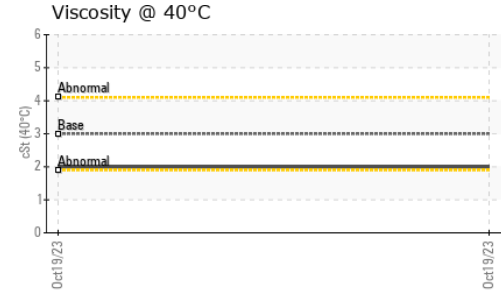
| WEAR METALS | | method | limit/base | current | history1 | history2 |
|-------------|-----|---------------|------------|--------------|----------|----------|
| Iron | ppm | ASTM D5185(m) | >2 | <1 | --- | --- |
| Chromium | ppm | ASTM D5185(m) | >2 | 0 | --- | --- |
| Nickel | ppm | ASTM D5185(m) | >2 | 0 | --- | --- |
| Titanium | ppm | ASTM D5185(m) | >2 | 0 | --- | --- |
| Silver | ppm | ASTM D5185(m) | >2 | 0 | --- | --- |
| Aluminum | ppm | ASTM D5185(m) | >2 | 0 | --- | --- |
| Lead | ppm | ASTM D5185(m) | >2 | 0 | --- | --- |
| Copper | ppm | ASTM D5185(m) | >2 | 0 | --- | --- |
| Tin | ppm | ASTM D5185(m) | >2 | 0 | --- | --- |
| Antimony | ppm | ASTM D5185(m) | >2 | 0 | --- | --- |
| Vanadium | ppm | ASTM D5185(m) | | 0 | --- | --- |
| Beryllium | ppm | ASTM D5185(m) | >2 | 0 | --- | --- |
| Cadmium | ppm | ASTM D5185(m) | | 0 | --- | --- |

| ADDITIVES | | method | limit/base | current | history1 | history2 |
|------------|-----|---------------|------------|--------------|----------|----------|
| Boron | ppm | ASTM D5185(m) | 2 | 0 | --- | --- |
| Barium | ppm | ASTM D5185(m) | 2 | 0 | --- | --- |
| Molybdenum | ppm | ASTM D5185(m) | 2 | 0 | --- | --- |
| Manganese | ppm | ASTM D5185(m) | | 0 | --- | --- |
| Magnesium | ppm | ASTM D5185(m) | 2 | 0 | --- | --- |
| Calcium | ppm | ASTM D5185(m) | 2 | 1 | --- | --- |
| Phosphorus | ppm | ASTM D5185(m) | 2 | 0 | --- | --- |
| Zinc | ppm | ASTM D5185(m) | 2 | 3 | --- | --- |
| Sulfur | ppm | ASTM D5185(m) | 250 | 110 | --- | --- |
| Lithium | ppm | ASTM D5185(m) | | <1 | --- | --- |

| CONTAMINANTS | | method | limit/base | current | history1 | history2 |
|--------------|-----|---------------|------------|--------------|----------|----------|
| Silicon | ppm | ASTM D5185(m) | >10 | <1 | --- | --- |
| Sodium | ppm | ASTM D5185(m) | >5 | <1 | --- | --- |
| Potassium | ppm | ASTM D5185(m) | >20 | 0 | --- | --- |

| VISUAL | | method | limit/base | current | history1 | history2 |
|------------------|--------|---------|------------|--------------|----------|----------|
| White Metal | scalar | Visual* | NONE | NONE | --- | --- |
| Yellow Metal | scalar | Visual* | NONE | NONE | --- | --- |
| Precipitate | scalar | Visual* | NONE | NONE | --- | --- |
| Silt | scalar | Visual* | NONE | NONE | --- | --- |
| Debris | scalar | Visual* | NONE | NONE | --- | --- |
| Sand/Dirt | scalar | Visual* | NONE | NONE | --- | --- |
| Appearance | scalar | Visual* | NORML | NORML | --- | --- |
| Odor | scalar | Visual* | NORML | NORML | --- | --- |
| Emulsified Water | scalar | Visual* | >0.05 | NEG | --- | --- |
| Free Water | scalar | Visual* | | NEG | --- | --- |

OIL ANALYSIS REPORT



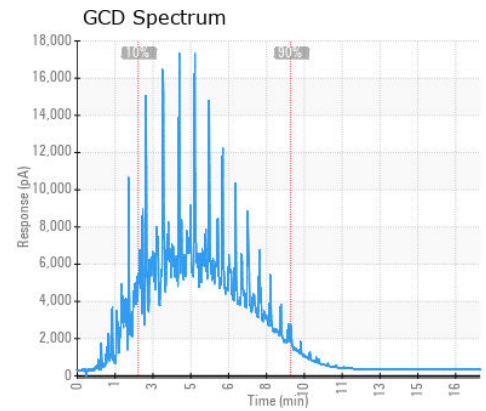
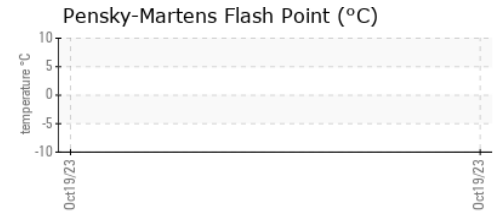
| FLUID PROPERTIES | | method | limit/base | current | history1 | history2 |
|------------------|-----|---------------|------------|----------|----------|----------|
| Visc @ 40°C | cSt | ASTM D7279(m) | 3.0 | 2 | --- | --- |

| SIMULATED DISTILLATION (GCD) | | method | limit/base | current | history1 | history2 |
|-------------------------------|----|-------------|------------|--------------|----------|----------|
| (GCD) % < 335°C | °C | ASTM D2887* | | 91.49 | --- | --- |
| (GCD) Initial Boiling Point | °C | ASTM D2887* | | 115.1 | --- | --- |
| (GCD) 5% Distillation Point | °C | ASTM D2887* | | 150.6 | --- | --- |
| (GCD) 10% Distillation Point | °C | ASTM D2887* | | 165.4 | --- | --- |
| (GCD) 20% Distillation Point | °C | ASTM D2887* | | 186.9 | --- | --- |
| (GCD) 30% Distillation Point | °C | ASTM D2887* | | 205.0 | --- | --- |
| (GCD) 40% Distillation Point | °C | ASTM D2887* | | 221.7 | --- | --- |
| (GCD) 50% Distillation Point | °C | ASTM D2887* | | 237.5 | --- | --- |
| (GCD) 60% Distillation Point | °C | ASTM D2887* | | 254.9 | --- | --- |
| (GCD) 70% Distillation Point | °C | ASTM D2887* | | 274.5 | --- | --- |
| (GCD) 80% Distillation Point | °C | ASTM D2887* | | 298.0 | --- | --- |
| (GCD) 90% Distillation Point | °C | ASTM D2887* | | 327.4 | --- | --- |
| (GCD) FBP% Distillation Point | °C | ASTM D2887* | | 483.6 | --- | --- |

SAMPLE IMAGES

| | method | limit/base | current | history1 | history2 |
|--------|--------|------------|--|----------|----------|
| Color | | |  | no image | no image |
| Bottom | | |  | no image | no image |

GRAPHS



Laboratory : WearCheck - C8-1175 Appleby Line, Burlington, ON L7L 5H9
Sample No. : WA0019093
Lab Number : **02591564**
Unique Number : 5668643
Test Package : MOB 1 (Additional Tests: GC-PercFuel, GCD)

Generatrice Drummond
 243 rue des ARTISANS
 SAINT-GERMAIN-DE-GRANTHAM, QC
 CA J0C 1K0
 Contact: Valerie Poirier
 poiirivalerie@generatricedrummond.com
 T: (819)398-6811
 F: (819)398-7022

To discuss this sample report, contact Customer Service at 1-800-268-2131.
 Test denoted (*) outside scope of accreditation, (m) method modified, (e) tested at external lab.
 Validity of results and interpretation are based on the sample and information as supplied.