

OIL ANALYSIS REPORT

Sample Rating Trend

NORMAL



Area
[215315]
Machine Id
ONAN GD11457
Component
Diesel Fuel
Fluid
No.2 DIESEL FUEL (ULTRALOW SULPHUR) (--- GAL)

DIAGNOSIS

Recommendation

Veillez communiquer avec un représentant Wajax Power Systems au sujet de l'achat d'une trousse d'échantillonnage appropriée à vos besoins.

Corrosion

{sans objet}

Contaminants

Il n'y a aucune indication de contamination dans le composant (non confirmée).

Fuel Condition

La quantité de l'échantillonnage du fuel ne suffisait pas à déterminer sa condition et/ou sa classification.

SAMPLE INFORMATION

method	limit/base	current	history1	history2
Sample Number	Client Info	WA0019091	---	---
Sample Date	Client Info	17 Oct 2023	---	---
Machine Age	hrs Client Info	0	---	---
Sample Status		NORMAL	---	---

WEAR METALS

method	limit/base	current	history1	history2
Iron	ppm ASTM D5185(m) >2	<1	---	---
Chromium	ppm ASTM D5185(m) >2	0	---	---
Nickel	ppm ASTM D5185(m) >2	0	---	---
Titanium	ppm ASTM D5185(m) >2	0	---	---
Silver	ppm ASTM D5185(m) >2	0	---	---
Aluminum	ppm ASTM D5185(m) >2	0	---	---
Lead	ppm ASTM D5185(m) >2	0	---	---
Copper	ppm ASTM D5185(m) >2	0	---	---
Tin	ppm ASTM D5185(m) >2	0	---	---
Antimony	ppm ASTM D5185(m) >2	0	---	---
Vanadium	ppm ASTM D5185(m)	0	---	---
Beryllium	ppm ASTM D5185(m) >2	0	---	---
Cadmium	ppm ASTM D5185(m)	0	---	---

ADDITIVES

method	limit/base	current	history1	history2
Boron	ppm ASTM D5185(m) 2	0	---	---
Barium	ppm ASTM D5185(m) 2	0	---	---
Molybdenum	ppm ASTM D5185(m) 2	0	---	---
Manganese	ppm ASTM D5185(m)	0	---	---
Magnesium	ppm ASTM D5185(m) 2	0	---	---
Calcium	ppm ASTM D5185(m) 2	<1	---	---
Phosphorus	ppm ASTM D5185(m) 2	0	---	---
Zinc	ppm ASTM D5185(m) 2	<1	---	---
Sulfur	ppm ASTM D5185(m) 10	7	---	---
Lithium	ppm ASTM D5185(m)	<1	---	---

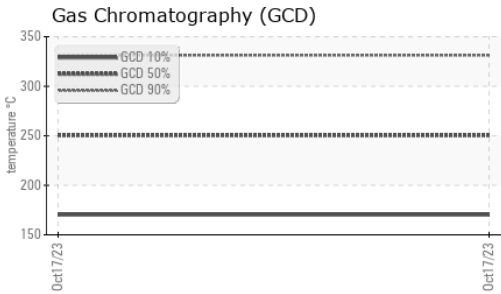
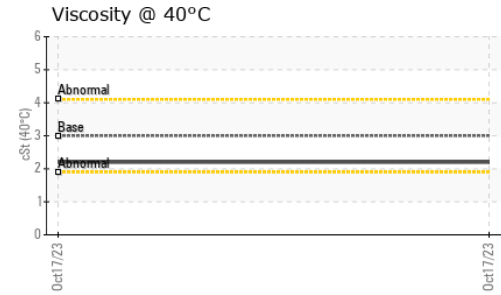
CONTAMINANTS

method	limit/base	current	history1	history2
Silicon	ppm ASTM D5185(m) >10	0	---	---
Sodium	ppm ASTM D5185(m) >5	<1	---	---
Potassium	ppm ASTM D5185(m) >20	0	---	---

VISUAL

method	limit/base	current	history1	history2
White Metal	scalar Visual* NONE	NONE	---	---
Yellow Metal	scalar Visual* NONE	NONE	---	---
Precipitate	scalar Visual* NONE	NONE	---	---
Silt	scalar Visual* NONE	VLITE	---	---
Debris	scalar Visual* NONE	NONE	---	---
Sand/Dirt	scalar Visual* NONE	NONE	---	---
Appearance	scalar Visual* NORML	NORML	---	---
Odor	scalar Visual* NORML	NORML	---	---
Emulsified Water	scalar Visual* >0.05	NEG	---	---
Free Water	scalar Visual*	NEG	---	---

OIL ANALYSIS REPORT



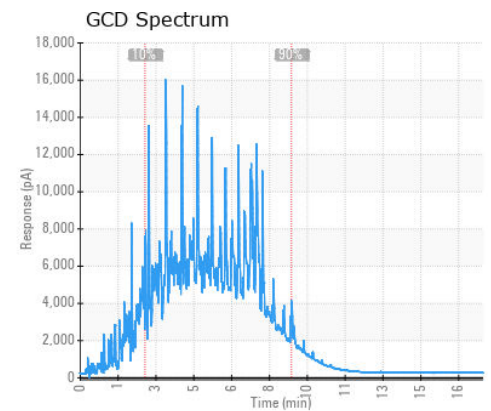
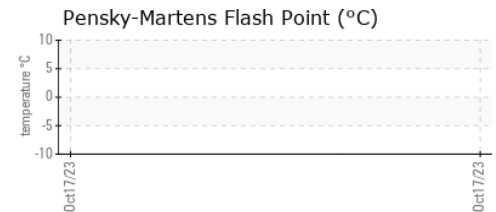
FLUID PROPERTIES		method	limit/base	current	history1	history2
Visc @ 40°C	cSt	ASTM D7279(m)	3.0	2.2	---	---

SIMULATED DISTILLATION (GCD)		method	limit/base	current	history1	history2
(GCD) % < 335°C	°C	ASTM D2887*		90.36	---	---
(GCD) Initial Boiling Point	°C	ASTM D2887*		103.0	---	---
(GCD) 5% Distillation Point	°C	ASTM D2887*		151.7	---	---
(GCD) 10% Distillation Point	°C	ASTM D2887*		170.2	---	---
(GCD) 20% Distillation Point	°C	ASTM D2887*		195.7	---	---
(GCD) 30% Distillation Point	°C	ASTM D2887*		214.6	---	---
(GCD) 40% Distillation Point	°C	ASTM D2887*		232.1	---	---
(GCD) 50% Distillation Point	°C	ASTM D2887*		250.4	---	---
(GCD) 60% Distillation Point	°C	ASTM D2887*		270.6	---	---
(GCD) 70% Distillation Point	°C	ASTM D2887*		289.6	---	---
(GCD) 80% Distillation Point	°C	ASTM D2887*		308.3	---	---
(GCD) 90% Distillation Point	°C	ASTM D2887*		331.3	---	---
(GCD) FBP% Distillation Point	°C	ASTM D2887*		468.0	---	---

SAMPLE IMAGES		method	limit/base	current	history1	history2
---------------	--	--------	------------	---------	----------	----------

Color					no image	no image
Bottom					no image	no image

GRAPHS



Laboratory : WearCheck - C8-1175 Appleby Line, Burlington, ON L7L 5H9
Sample No. : WA0019091
Lab Number : **02591565**
Unique Number : 5668644
Test Package : MOB 1 (Additional Tests: GC-PercFuel, GCD)

Generatrice Drummond
 243 rue des ARTISANS
 SAINT-GERMAIN-DE-GRANTHAM, QC
 CA J0C 1K0
 Contact: Valerie Poirier
 poiirivalerie@generatricedrummond.com
 T: (819)398-6811
 F: (819)398-7022

*To discuss this sample report, contact Customer Service at 1-800-268-2131.
 Test denoted (*) outside scope of accreditation, (m) method modified, (e) tested at external lab.
 Validity of results and interpretation are based on the sample and information as supplied.*