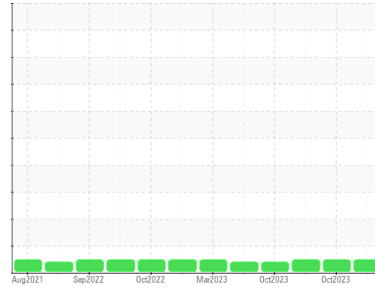




OIL ANALYSIS REPORT

Sample Rating Trend



NORMAL



Machine Id
SGT400NT (S/N 414090-001)

Component
Turbine

Fluid
SHELL TURBO S4 GX 46 (1540 GAL)

DIAGNOSIS

Recommendation

Resample at the next service interval to monitor. (Customer Sample Comment: Flushing filter. Overnight run. 3um filter. Pre release to the engine and hydrostart.)

Wear

All component wear rates are normal.

Contamination

The system cleanliness is acceptable for your target ISO 4406 cleanliness code. The water content is negligible. The system and fluid cleanliness is acceptable.

Fluid Condition

The AN level is acceptable for this fluid. The condition of the oil is suitable for further service.

SAMPLE INFORMATION

	method	limit/base	current	history1	history2
Sample Number	Client Info		WC0806284	WC0806285	WC0806283
Sample Date	Client Info		25 Oct 2023	24 Oct 2023	21 Oct 2023
Machine Age	hrs	Client Info	0	0	6
Oil Age	hrs	Client Info	12	0	0
Oil Changed	Client Info		Changed	Filtered	N/A
Sample Status			NORMAL	NORMAL	NORMAL

WEAR METALS

	method	limit/base	current	history1	history2
PQ	ASTM D8184*		0	0	0
Iron	ppm	ASTM D5185(m) >15	0	0	0
Chromium	ppm	ASTM D5185(m) >4	0	0	0
Nickel	ppm	ASTM D5185(m) >2	<1	0	<1
Titanium	ppm	ASTM D5185(m)	0	0	0
Silver	ppm	ASTM D5185(m)	<1	<1	<1
Aluminum	ppm	ASTM D5185(m) >10	0	0	0
Lead	ppm	ASTM D5185(m)	0	0	<1
Copper	ppm	ASTM D5185(m) >5	<1	<1	<1
Tin	ppm	ASTM D5185(m) >5	<1	0	0
Antimony	ppm	ASTM D5185(m)	0	0	0
Vanadium	ppm	ASTM D5185(m)	0	0	0
Beryllium	ppm	ASTM D5185(m)	0	0	0
Cadmium	ppm	ASTM D5185(m)	0	0	0

ADDITIVES

	method	limit/base	current	history1	history2
Boron	ppm	ASTM D5185(m) 0	<1	<1	<1
Barium	ppm	ASTM D5185(m) 0	0	0	0
Molybdenum	ppm	ASTM D5185(m) 0	0	0	0
Manganese	ppm	ASTM D5185(m) 0	0	0	0
Magnesium	ppm	ASTM D5185(m) 0	0	0	0
Calcium	ppm	ASTM D5185(m) 0	0	<1	0
Phosphorus	ppm	ASTM D5185(m) 75	85	83	89
Zinc	ppm	ASTM D5185(m) 10	1	1	1
Sulfur	ppm	ASTM D5185(m) 75	96	95	91
Lithium	ppm	ASTM D5185(m)	<1	<1	<1

CONTAMINANTS

	method	limit/base	current	history1	history2
Silicon	ppm	ASTM D5185(m) >15	<1	<1	1
Sodium	ppm	ASTM D5185(m)	0	0	0
Potassium	ppm	ASTM D5185(m) >20	0	0	0
Water	%	ASTM D6304* >0.03	0.001	0.001	0.001
ppm Water	ppm	ASTM D6304* >300	0.8	2.0	8.0

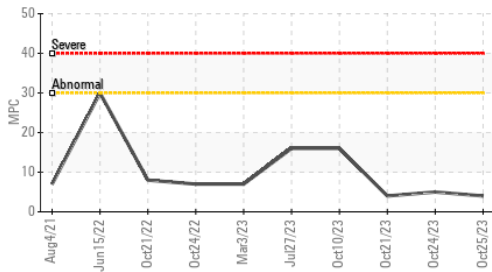
INFRA-RED

	method	limit/base	current	history1	history2
Soot %	%	ASTM D7844*	0	0	0
Nitration	Abs/cm	ASTM D7624*	2.3	2.3	2.3
Sulfation	Abs/.1mm	ASTM D7415*	10.5	10.5	10.4

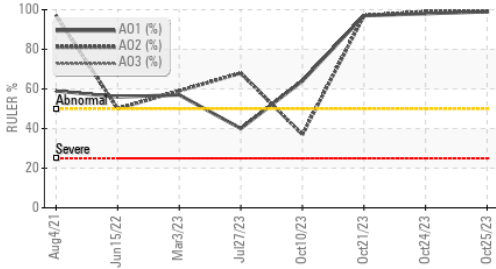


OIL ANALYSIS REPORT

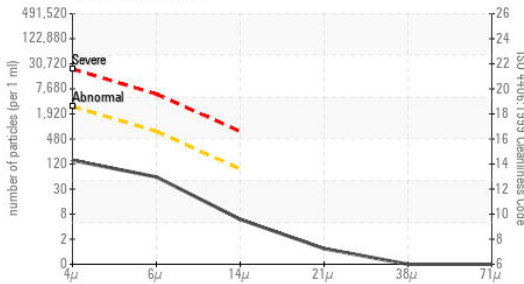
Varnish Potential



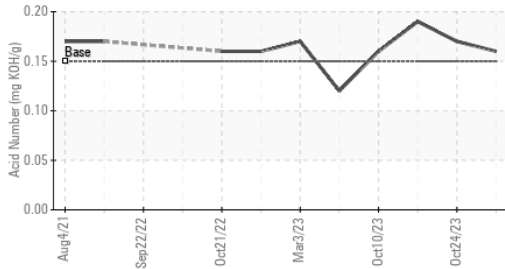
Remaining Life (RULER)



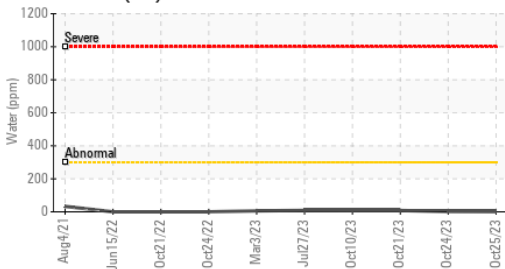
Particle Count



Acid Number



Water (KF)



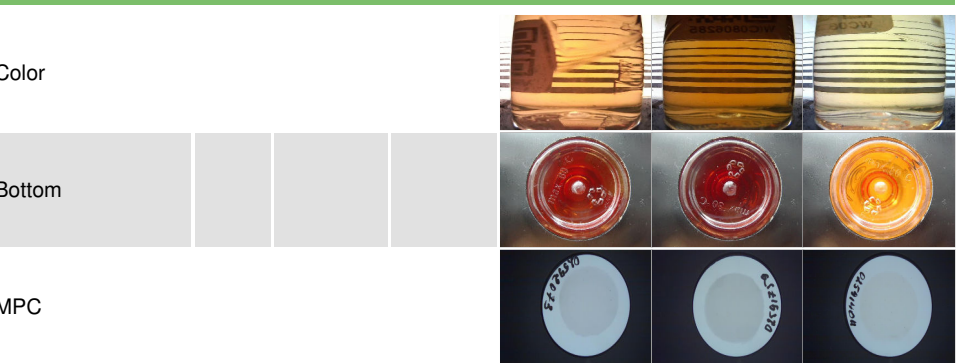
FLUID CLEANLINESS	method	limit/base	current	history1	history2
Particles >4µm	ASTM D7647	>2500	130	247	205
Particles >6µm	ASTM D7647	>640	52	82	83
Particles >14µm	ASTM D7647	>80	5	8	12
Particles >21µm	ASTM D7647	>20	1	3	4
Particles >38µm	ASTM D7647	>4	0	1	0
Particles >71µm	ASTM D7647	>3	0	0	0
Oil Cleanliness	ISO 4406 (c)	>18/16/13	14/13/10	15/14/10	15/14/11

FLUID DEGRADATION	method	limit/base	current	history1	history2
Oxidation	Abs./1mm	ASTM D7414*	2.5	2.6	2.2
Acid Number (AN)	mg KOH/g	ASTM D974*	0.16	0.17	0.19
Anti-Oxidant 1	%	ASTM D6971*	99	98	97
Anti-Oxidant 2	%	ASTM D6971*	99	99	97
MPC Varnish Potential	Scale	ASTM D7843(m)*	4	5	4

VISUAL	method	limit/base	current	history1	history2
White Metal	scalar	Visual*	NONE	NONE	NONE
Yellow Metal	scalar	Visual*	NONE	NONE	NONE
Precipitate	scalar	Visual*	NONE	NONE	NONE
Silt	scalar	Visual*	NONE	NONE	NONE
Debris	scalar	Visual*	NONE	NONE	NONE
Sand/Dirt	scalar	Visual*	NONE	NONE	NONE
Appearance	scalar	Visual*	NORML	NORML	NORML
Odor	scalar	Visual*	NORML	NORML	NORML
Emulsified Water	scalar	Visual*	NEG	NEG	NEG
Free Water	scalar	Visual*	NEG	NEG	NEG

FLUID PROPERTIES	method	limit/base	current	history1	history2
Visc @ 40°C	cSt	ASTM D7279(m)	43.1	43.1	42.9
Visc @ 100°C	cSt	ASTM D7279(m)	7.4	7.4	7.4
Viscosity Index (VI)	Scale	ASTM D2270*	137	137	138

SAMPLE IMAGES

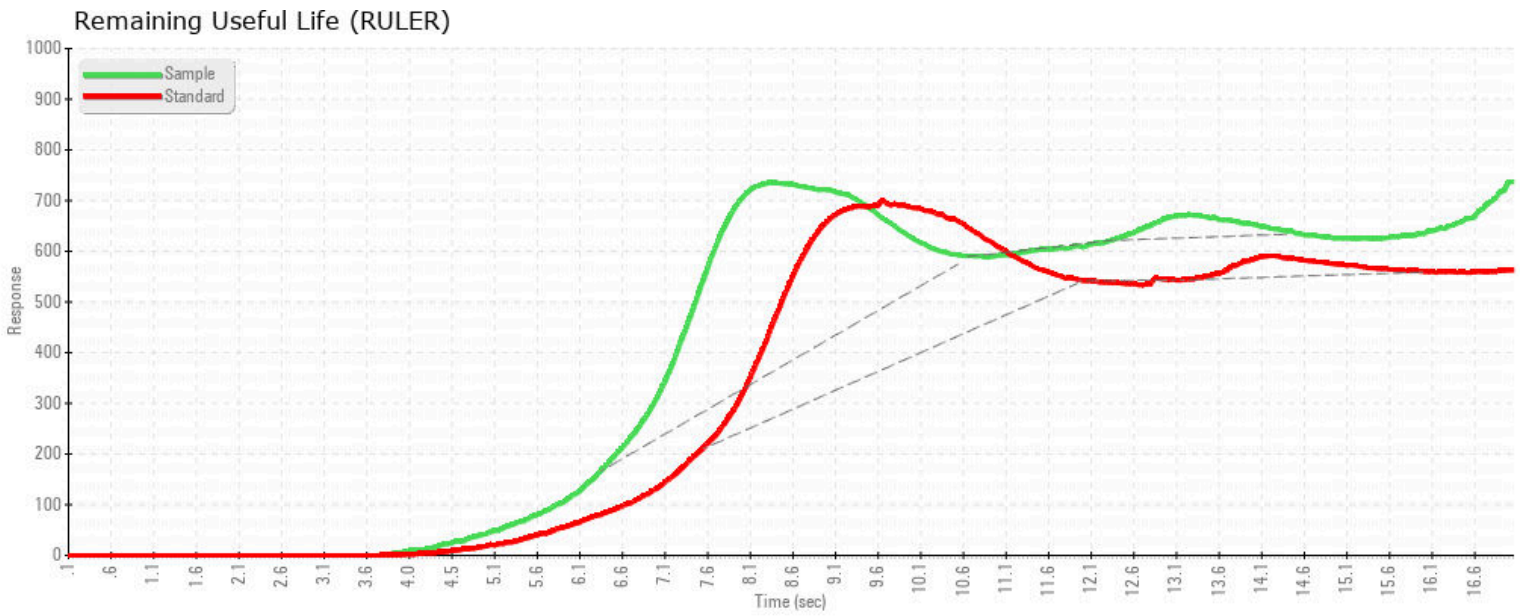


Laboratory : WearCheck - C8-1175 Appleby Line, Burlington, ON L7L 5H9
Sample No. : WC0806284
Lab Number : **02592073**
Unique Number : 5669152
Test Package : AOM 1

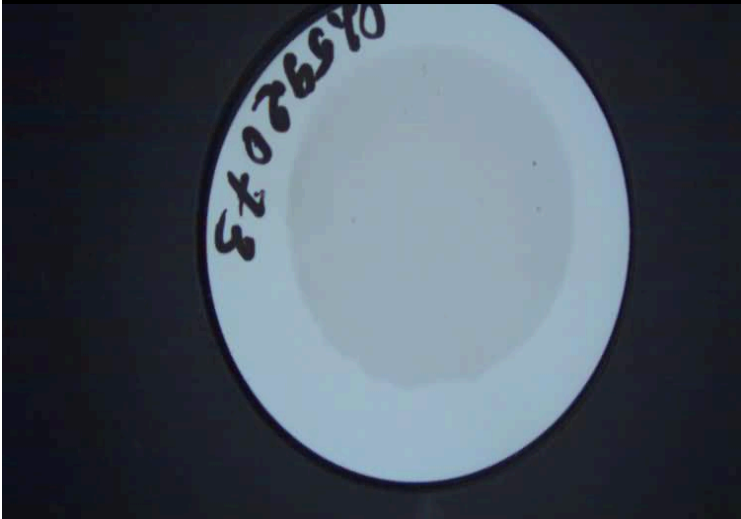
Received : 26 Oct 2023
Diagnosed : 27 Oct 2023
Diagnostician : Kevin Marson

CARDINAL POWER OF CANADA
 170 HENRY ST.
 CARDINAL, ON
 CA K0E 1E0
 Contact: Barry Mayhew
 bmayhew@capstoneinfra.com
 T: (613)657-1400
 F: (613)657-1402

To discuss this sample report, contact Customer Service at 1-800-268-2131.
 Test denoted (*) outside scope of accreditation, (m) method modified, (e) tested at external lab.
 Validity of results and interpretation are based on the sample and information as supplied.



MPC (Varnish Test)



Sample Color & Clarity



This page left intentionally blank