



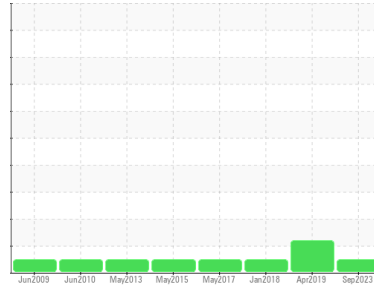
# OIL ANALYSIS REPORT

## Sample Rating Trend

**NORMAL**



Area  
**M11**  
 Machine Id  
**44-P-2530B-NDE WATER INJ. BOOSTER PUMP NON-DRIVE END**  
 Component  
**Bearing**  
 Fluid  
**MOBIL DTE OIL LIGHT (--- LTR)**



### DIAGNOSIS

#### Recommendation

Confirm the source of the lubricant being utilized for top-up/fill. Resample at the next service interval to monitor. NOTE: Please provide information regarding reservoir capacity, filter type and micron rating with next sample.

#### Wear

All component wear rates are normal.

#### Contamination

The water content is negligible. There is no indication of any contamination in the oil.

#### Fluid Condition

Additive levels indicate the addition of a different brand, or type of oil. The condition of the oil is acceptable for the time in service.

### SAMPLE INFORMATION

	method	limit/base	current	history1	history2
Sample Number			<b>PP</b>	PP	PP
Sample Date			<b>18 Sep 2023</b>	23 Apr 2019	20 Jan 2018
Machine Age	days		<b>0</b>	0	0
Oil Age	days		<b>0</b>	0	0
Oil Changed			<b>N/A</b>	N/A	N/A
Sample Status			<b>NORMAL</b>	ATTENTION	NORMAL

### WEAR METALS

	method	limit/base	current	history1	history2	
Iron	ppm	ASTM D5185(m)	>20	<b>&lt;1</b>	6	1
Chromium	ppm	ASTM D5185(m)	>2	<b>0</b>	0	0
Nickel	ppm	ASTM D5185(m)	>2	<b>0</b>	<1	<1
Titanium	ppm	ASTM D5185(m)		<b>0</b>	0	0
Silver	ppm	ASTM D5185(m)		<b>&lt;1</b>	0	0
Aluminum	ppm	ASTM D5185(m)	>5	<b>&lt;1</b>	<1	<1
Lead	ppm	ASTM D5185(m)	>25	<b>0</b>	0	<1
Copper	ppm	ASTM D5185(m)	>5	<b>1</b>	<1	<1
Tin	ppm	ASTM D5185(m)	>15	<b>0</b>	0	<1
Antimony	ppm	ASTM D5185(m)		<b>0</b>	0	0
Vanadium	ppm	ASTM D5185(m)		<b>0</b>	0	0
Beryllium	ppm	ASTM D5185(m)		<b>0</b>	0	0
Cadmium	ppm	ASTM D5185(m)		<b>0</b>	<1	0

### ADDITIVES

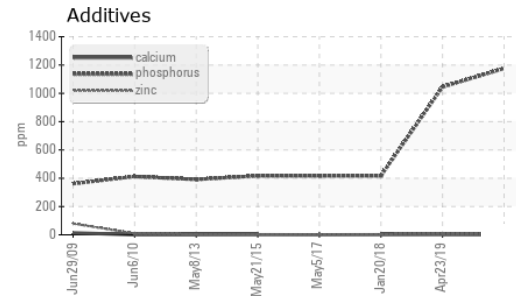
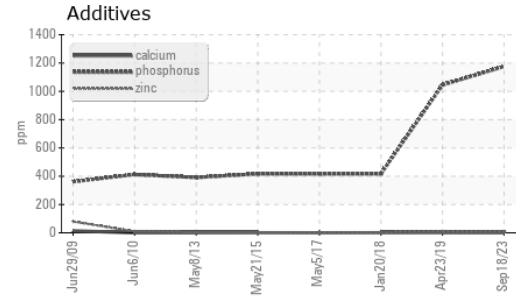
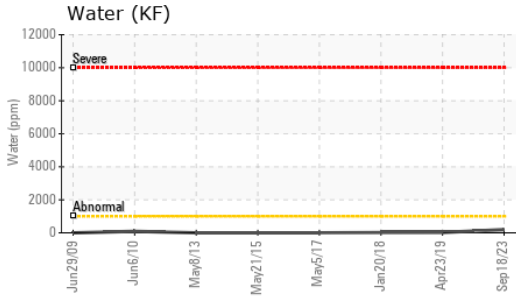
	method	limit/base	current	history1	history2	
Boron	ppm	ASTM D5185(m)		<b>&lt;1</b>	0	<1
Barium	ppm	ASTM D5185(m)		<b>&lt;1</b>	0	0
Molybdenum	ppm	ASTM D5185(m)		<b>0</b>	0	0
Manganese	ppm	ASTM D5185(m)		<b>0</b>	<1	0
Magnesium	ppm	ASTM D5185(m)		<b>0</b>	3	<1
Calcium	ppm	ASTM D5185(m)		<b>&lt;1</b>	1	<1
Phosphorus	ppm	ASTM D5185(m)		<b>1176</b>	▲ 1045	417
Zinc	ppm	ASTM D5185(m)		<b>7</b>	▲ 6	4
Sulfur	ppm	ASTM D5185(m)		<b>22</b>	▲ 91	319
Lithium	ppm	ASTM D5185(m)		<b>&lt;1</b>	0	<1

### CONTAMINANTS

	method	limit/base	current	history1	history2	
Silicon	ppm	ASTM D5185(m)	>15	<b>0</b>	<1	<1
Sodium	ppm	ASTM D5185(m)		<b>&lt;1</b>	1	<1
Potassium	ppm	ASTM D5185(m)	>20	<b>0</b>	0	<1
Water	%	ASTM D6304*	>0.1	<b>0.019</b>	0.002	0.001
ppm Water	ppm	ASTM D6304*	>1000	<b>194.0</b>	20.5	16.1



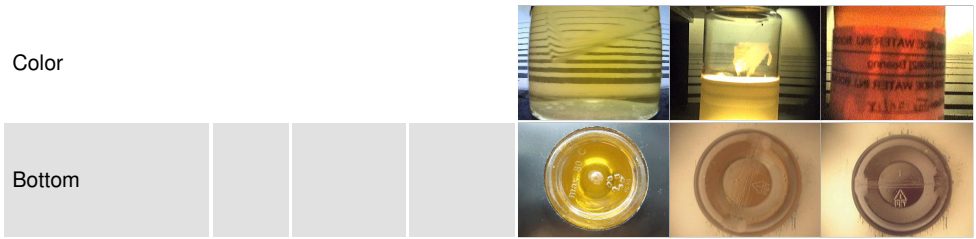
# OIL ANALYSIS REPORT



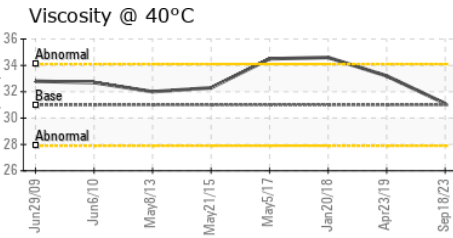
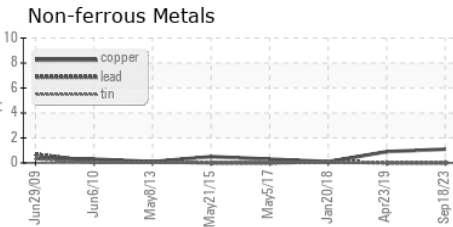
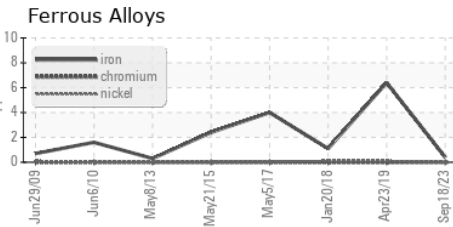
VISUAL	method	limit/base	current	history1	history2
White Metal	scalar	Visual*	NONE	NONE	NONE
Yellow Metal	scalar	Visual*	NONE	NONE	NONE
Precipitate	scalar	Visual*	NONE	NONE	NONE
Silt	scalar	Visual*	NONE	NONE	NONE
Debris	scalar	Visual*	NONE	NONE	NONE
Sand/Dirt	scalar	Visual*	NONE	NONE	NONE
Appearance	scalar	Visual*	NORML	NORML	NORML
Odor	scalar	Visual*	NORML	NORML	NORML
Emulsified Water	scalar	Visual*	>0.1	.2%	.2%
Free Water	scalar	Visual*		NEG	NEG

FLUID PROPERTIES	method	limit/base	current	history1	history2
Visc @ 40°C	cSt	ASTM D7279(m)	31	31.1	33.2

SAMPLE IMAGES	method	limit/base	current	history1	history2
---------------	--------	------------	---------	----------	----------



## GRAPHS



**Laboratory** : WearCheck - C8-1175 Appleby Line, Burlington, ON L7L 5H9 HUSKY SEA ROSE /AKER SOLUTIONS  
**Sample No.** : PP **Received** : 26 Oct 2023  
**Lab Number** : 02592122 **Diagnosed** : 27 Oct 2023  
**Unique Number** : 5669201 **Diagnostician** : Kevin Marson  
**Test Package** : IND 1 ( Additional Tests: KF )

To discuss this sample report, contact Customer Service at 1-800-268-2131.  
 Test denoted (\*) outside scope of accreditation, (m) method modified, (e) tested at external lab.  
 Validity of results and interpretation are based on the sample and information as supplied.

ST. JOHN'S, NL  
 CA A1C 6C9  
 Contact: Nick Fewer  
 nick.fewer@akersolutions.com  
 T: (709)757-4582  
 F: (709)722-8730