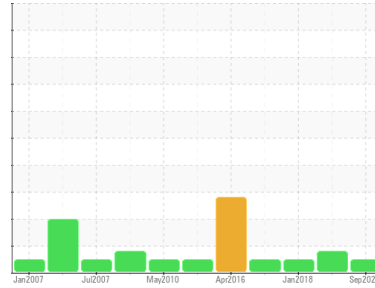




# OIL ANALYSIS REPORT

Sample Rating Trend



**NORMAL**



Area  
**M11**  
 Machine Id  
**44-P-2530A-DE WATER INJ. BOOSTER PUMP**  
 Component  
**Drive End Bearing**  
 Fluid  
**MOBIL DTE OIL LIGHT (--- LTR)**

## DIAGNOSIS

### Recommendation

Confirm the source of the lubricant being utilized for top-up/fill. Resample at the next service interval to monitor. NOTE: Please provide information regarding reservoir capacity, filter type and micron rating with next sample.

### Wear

All component wear rates are normal.

### Contamination

The water content is negligible. There is no indication of any contamination in the oil.

### Fluid Condition

Additive levels indicate the addition of a different brand, or type of oil. The condition of the oil is acceptable for the time in service.

## SAMPLE INFORMATION

	method	limit/base	current	history1	history2
Sample Number			<b>PP</b>	PP	PP
Sample Date			<b>18 Sep 2023</b>	25 Apr 2019	20 Jan 2018
Machine Age	days	Client Info	<b>0</b>	0	0
Oil Age	days	Client Info	<b>0</b>	0	0
Oil Changed		Client Info	<b>N/A</b>	N/A	N/A
Sample Status			<b>NORMAL</b>	ATTENTION	NORMAL

## WEAR METALS

	method	limit/base	current	history1	history2
Iron	ppm	ASTM D5185(m) >20	<1	▲ 25	5
Chromium	ppm	ASTM D5185(m) >2	0	<1	0
Nickel	ppm	ASTM D5185(m) >2	0	<1	<1
Titanium	ppm	ASTM D5185(m)	0	0	0
Silver	ppm	ASTM D5185(m)	<1	0	0
Aluminum	ppm	ASTM D5185(m) >5	<1	0	0
Lead	ppm	ASTM D5185(m) >25	0	<1	0
Copper	ppm	ASTM D5185(m) >5	<1	2	<1
Tin	ppm	ASTM D5185(m) >15	0	0	0
Antimony	ppm	ASTM D5185(m)	0	0	<1
Vanadium	ppm	ASTM D5185(m)	0	0	0
Beryllium	ppm	ASTM D5185(m)	0	0	0
Cadmium	ppm	ASTM D5185(m)	0	<1	0

## ADDITIVES

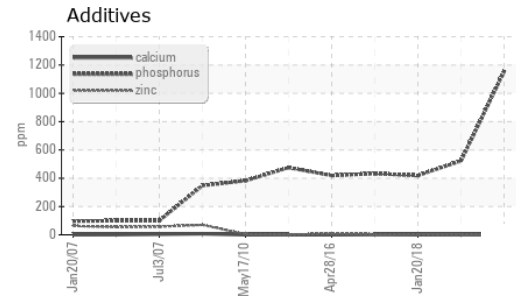
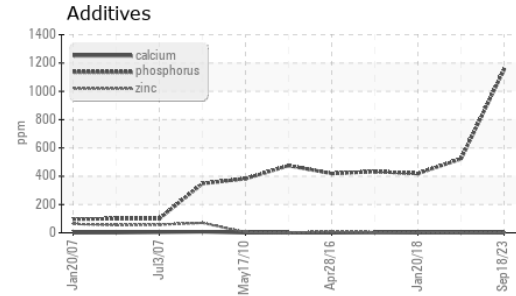
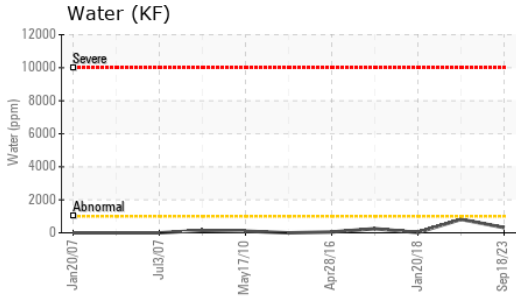
	method	limit/base	current	history1	history2
Boron	ppm	ASTM D5185(m)	<1	0	<1
Barium	ppm	ASTM D5185(m)	<1	0	0
Molybdenum	ppm	ASTM D5185(m)	0	0	0
Manganese	ppm	ASTM D5185(m)	0	<1	0
Magnesium	ppm	ASTM D5185(m)	0	1	<1
Calcium	ppm	ASTM D5185(m)	<1	<1	<1
Phosphorus	ppm	ASTM D5185(m)	<b>1155</b>	522	419
Zinc	ppm	ASTM D5185(m)	<b>3</b>	4	2
Sulfur	ppm	ASTM D5185(m)	<b>22</b>	294	335
Lithium	ppm	ASTM D5185(m)	<1	0	<1

## CONTAMINANTS

	method	limit/base	current	history1	history2
Silicon	ppm	ASTM D5185(m) >15	<b>7</b>	2	<1
Sodium	ppm	ASTM D5185(m)	<1	1	0
Potassium	ppm	ASTM D5185(m) >20	<b>0</b>	0	<1
Water	%	ASTM D6304* >0.1	<b>0.031</b>	0.081	0.001
ppm Water	ppm	ASTM D6304* >1000	<b>315.8</b>	816.0	15.7



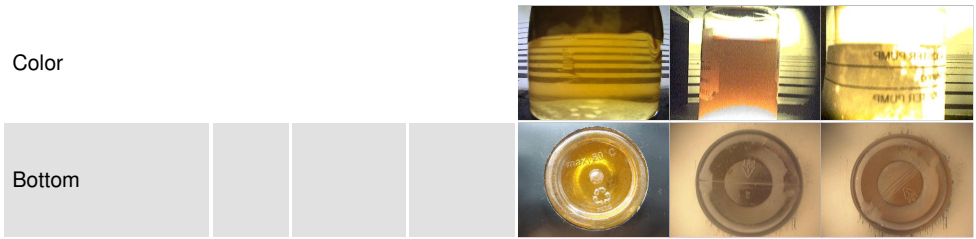
# OIL ANALYSIS REPORT



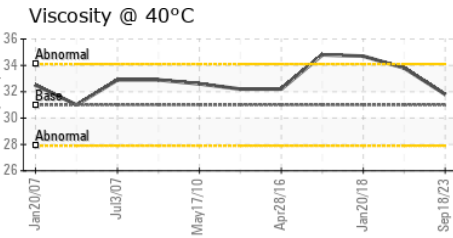
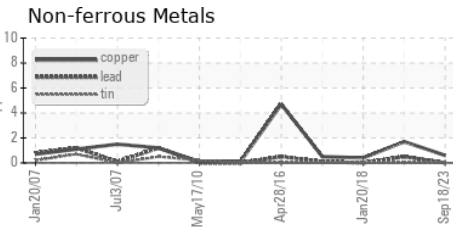
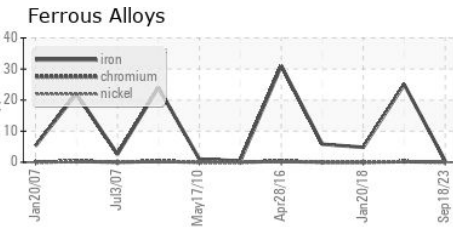
VISUAL	method	limit/base	current	history1	history2
White Metal	scalar	Visual*	NONE	NONE	NONE
Yellow Metal	scalar	Visual*	NONE	NONE	NONE
Precipitate	scalar	Visual*	NONE	NONE	NONE
Silt	scalar	Visual*	NONE	NONE	NONE
Debris	scalar	Visual*	NONE	NONE	NONE
Sand/Dirt	scalar	Visual*	NONE	NONE	NONE
Appearance	scalar	Visual*	NONE	NONE	NONE
Odor	scalar	Visual*	NORML	NORML	NORML
Emulsified Water	scalar	Visual*	>0.1	.2%	.2%
Free Water	scalar	Visual*		NEG	NEG

FLUID PROPERTIES	method	limit/base	current	history1	history2	
Visc @ 40°C	cSt	ASTM D7279(m)	31	31.8	33.8	34.7

SAMPLE IMAGES	method	limit/base	current	history1	history2
---------------	--------	------------	---------	----------	----------



## GRAPHS



**Laboratory** : WearCheck - C8-1175 Appleby Line, Burlington, ON L7L 5H9 **HUSKY SEA ROSE /AKER SOLUTIONS**  
**Sample No.** : PP **Received** : 26 Oct 2023 **PO BOX 20**  
**Lab Number** : 02592123 **Diagnosed** : 27 Oct 2023 **ST. JOHN'S, NL**  
**Unique Number** : 5669202 **Diagnostician** : Kevin Marson **CA A1C 6C9**  
**Test Package** : IND 1 ( Additional Tests: KF ) **Contact: Nick Fewer**

To discuss this sample report, contact Customer Service at 1-800-268-2131.  
 Test denoted (\*) outside scope of accreditation, (m) method modified, (e) tested at external lab.  
 Validity of results and interpretation are based on the sample and information as supplied.