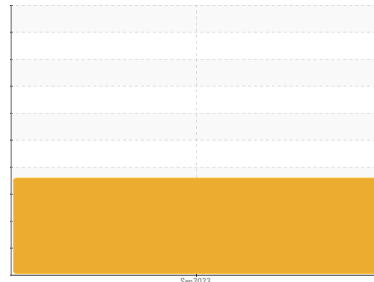




FUEL REPORT

Sample Rating Trend



ISO



Area

[52612]

Machine Id

JCB 542-90 3244322 (S/N 55320/40920U2216123)

Component

Diesel Fuel

Fluid

No.2 DIESEL FUEL (LOW-SULPHUR) (40 GAL)

DIAGNOSIS

▲ Recommendation

Check seals and/or filters for points of contaminant entry. Laboratory test indicate that this fuel is suitable for use and meets all test requirements. The air breather requires service. If unrated, we recommend that you replace with a suitable micron rated and/or desiccant air breather. If rated, we recommend that you service/replace the breather. We advise that you filter this fluid before use. We recommend you service the filters on this component. Resample in 30-45 days to monitor this situation.

▲ Contaminants

There is a high amount of silt (particulates < 14 microns in size) present in the fuel. The water content is negligible.

Fuel Condition

All laboratory tests indicate that this sample meets specifications for No.2 diesel fuel, low sulfur (US EPA/CGSB-3.517-3 type B). The fuel is still serviceable provided that the contaminant(s) can be reduced to acceptable levels.

SAMPLE INFORMATION

	method	limit/base	current	history1	history2
Sample Number	Client Info		JCB	---	---
Sample Date	Client Info		29 Sep 2023	---	---
Machine Age	hrs	Client Info	0	---	---
Sample Status			SEVERE	---	---

PHYSICAL PROPERTIES

	method	limit/base	current	history1	history2
Specific Gravity	ASTM D1298*	0.839	0.834	---	---
Fuel Color	text	Visual Screen*	Yllow	---	---
Visc @ 40°C	cSt	ASTM D7279(m)	3.0	---	---
Pensky-Martens Flash Point	°C	ASTM D7215*	52	---	---

SULFUR CONTENT

	method	limit/base	current	history1	history2
Sulfur	ppm	ASTM D5185(m)	250	20	---

DISTILLATION

	method	limit/base	current	history1	history2
Initial Boiling Point	°C	ASTM D2887*	165	171	---
5% Distillation Point	°C	ASTM D2887*		199	---
10% Distill Point	°C	ASTM D2887*	201	211	---
15% Distillation Point	°C	ASTM D2887*		220	---
20% Distill Point	°C	ASTM D2887*	216	228	---
30% Distill Point	°C	ASTM D2887*	230	243	---
40% Distill Point	°C	ASTM D2887*	243	255	---
50% Distill Point	°C	ASTM D2887*	255	268	---
60% Distill Point	°C	ASTM D2887*	267	283	---
70% Distill Point	°C	ASTM D2887*	280	297	---
80% Distill Point	°C	ASTM D2887*	295	313	---
85% Distillation Point	°C	ASTM D2887*		323	---
90% Distill Point	°C	ASTM D2887*	310	333	---
95% Distillation Point	°C	ASTM D2887*		348	---
Final Boiling Point	°C	ASTM D2887*	341	368	---

IGNITION QUALITY

	method	limit/base	current	history1	history2
API Gravity	ASTM D1298*	37.7	38	---	---
Cetane Index	ASTM D4737*	<40.0	53	---	---

CONTAMINANTS

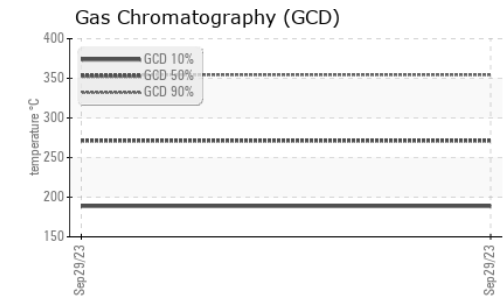
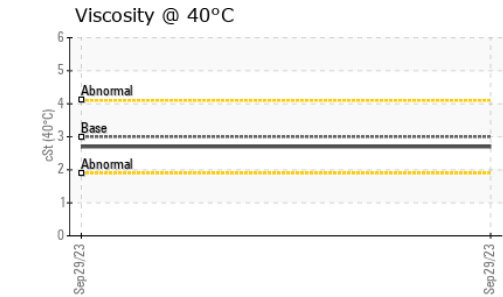
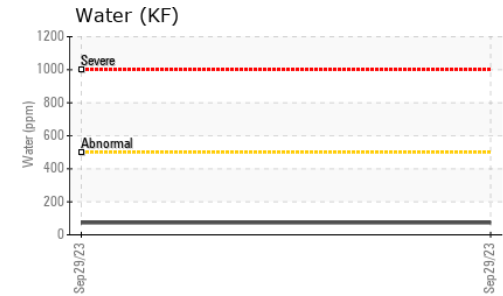
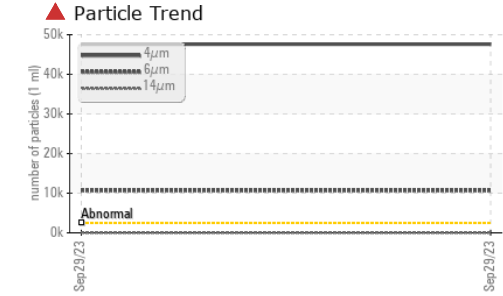
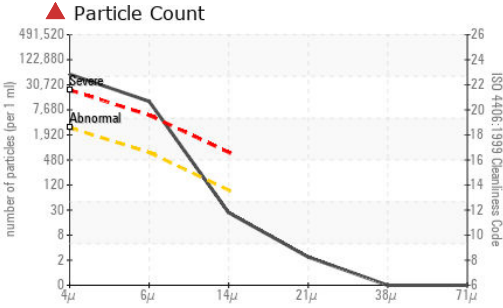
	method	limit/base	current	history1	history2
Silicon	ppm	ASTM D5185(m)	<1.0	<1	---
Sodium	ppm	ASTM D5185(m)	<0.1	<1	---
Potassium	ppm	ASTM D5185(m)	<0.1	<1	---
Water	%	ASTM D6304*	<0.05	0.007	---
ppm Water	ppm	ASTM D6304*	<500	73.4	---

FLUID CLEANLINESS

	method	limit/base	current	history1	history2
Particles >4µm	ASTM D7647	>2500	▲ 47585	---	---
Particles >6µm	ASTM D7647	>640	▲ 10687	---	---
Particles >14µm	ASTM D7647	>80	23	---	---
Particles >21µm	ASTM D7647	>20	2	---	---
Particles >38µm	ASTM D7647	>4	0	---	---
Particles >71µm	ASTM D7647	>3	0	---	---
Oil Cleanliness	ISO 4406 (c)	>18/16/13	▲ 23/21/12	---	---



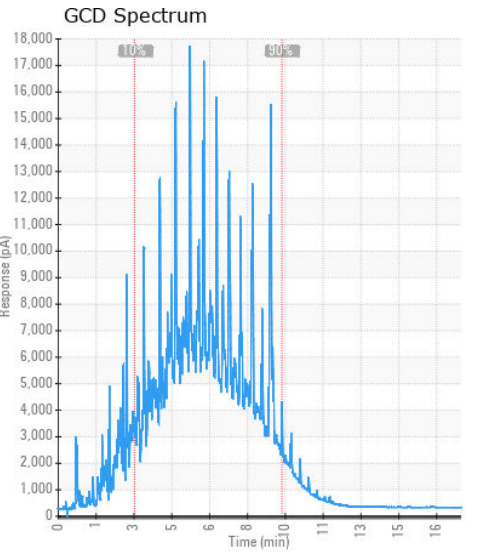
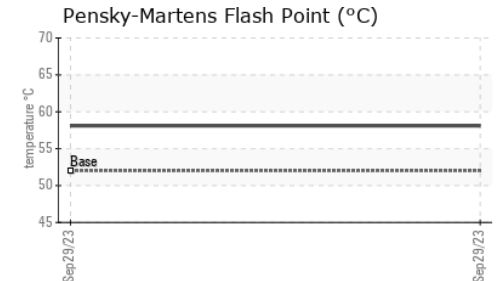
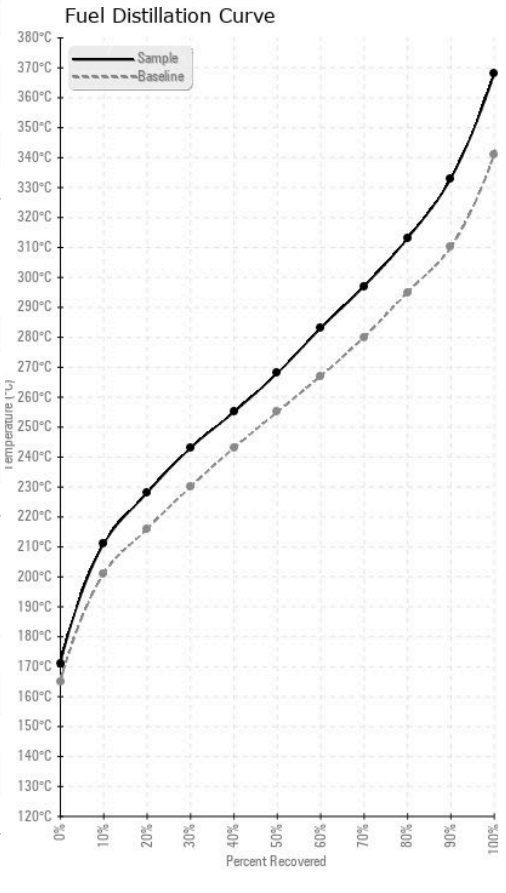
FUEL REPORT



HEAVY METALS		method	limit/base	current	history1	history2
Aluminum	ppm	ASTM D5185(m)	<0.1	0	---	---
Nickel	ppm	ASTM D5185(m)	<0.1	0	---	---
Lead	ppm	ASTM D5185(m)	<0.1	0	---	---
Vanadium	ppm	ASTM D5185(m)	<0.1	0	---	---
Iron	ppm	ASTM D5185(m)	<0.1	<1	---	---
Calcium	ppm	ASTM D5185(m)	<0.1	<1	---	---
Magnesium	ppm	ASTM D5185(m)	<0.1	0	---	---
Phosphorus	ppm	ASTM D5185(m)	<0.1	<1	---	---
Zinc	ppm	ASTM D5185(m)	<0.1	1	---	---

SAMPLE IMAGES		method	limit/base	current	history1	history2
Color				no image	no image	
Bottom				no image	no image	

GRAPHS



Laboratory : WearCheck - C8-1175 Appleby Line, Burlington, ON L7L 5H9
Sample No. : JCB
Lab Number : 02592295
Unique Number : 5669374
Test Package : FUEL (Additional Tests: CC Flash, GC-PercFuel, PRTCOUNT)

ADVANCE CONSTRUCTION EQUIPMENT - WATERLOO
 607 COLBY DRIVE
 WATERLOO, ON
 CA N2V 1A1
 Contact: David Haid
 dhaid@advanceequipment.net
 T: (519)742-5878
 F: (519)742-0541

To discuss this sample report, contact Customer Service at 1-800-268-2131.
 Test denoted (*) outside scope of accreditation, (m) method modified, (e) tested at external lab.
 Validity of results and interpretation are based on the sample and information as supplied.