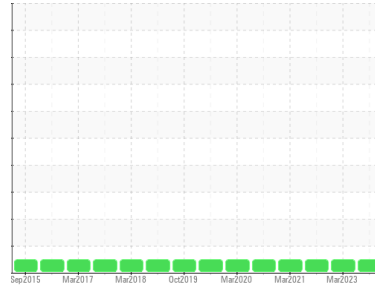




# OIL ANALYSIS REPORT

Sample Rating Trend

**NORMAL**



Machine Id  
**FPD G GEBR**

Component  
**Bearing**

Fluid  
**ESSO TERESSO ISO 68 (18 LTR)**

## DIAGNOSIS

### Recommendation

Resample at the next service interval to monitor.

### Wear

All component wear rates are normal.

### Contamination

There is no indication of any contamination in the oil.

### Fluid Condition

The AN level is acceptable for this fluid. The condition of the oil is suitable for further service.

## SAMPLE INFORMATION

	method	limit/base	current	history1	history2
Sample Number	Client Info		<b>WC0328086</b>	WC0328079	WC0445253
Sample Date	Client Info		<b>11 Oct 2023</b>	20 Mar 2023	20 Oct 2021
Machine Age	days	Client Info	<b>0</b>	0	0
Oil Age	days	Client Info	<b>0</b>	0	0
Oil Changed	Client Info		<b>Not Changed</b>	Not Changed	Not Changed
Sample Status			<b>NORMAL</b>	NORMAL	NORMAL

## WEAR METALS

	method	limit/base	current	history1	history2
PQ	ASTM D8184*		<b>0</b>	0	0
Iron	ppm	ASTM D5185(m) >63	<b>9</b>	5	4
Chromium	ppm	ASTM D5185(m) >20	<b>0</b>	0	0
Nickel	ppm	ASTM D5185(m) >20	<b>&lt;1</b>	<1	<1
Titanium	ppm	ASTM D5185(m)	<b>0</b>	0	0
Silver	ppm	ASTM D5185(m)	<b>&lt;1</b>	0	0
Aluminum	ppm	ASTM D5185(m) >2	<b>0</b>	0	<1
Lead	ppm	ASTM D5185(m) >161	<b>6</b>	6	6
Copper	ppm	ASTM D5185(m) >13	<b>&lt;1</b>	<1	<1
Tin	ppm	ASTM D5185(m) >27	<b>6</b>	6	5
Antimony	ppm	ASTM D5185(m)	<b>&lt;1</b>	1	1
Vanadium	ppm	ASTM D5185(m)	<b>0</b>	0	0
Beryllium	ppm	ASTM D5185(m)	<b>0</b>	0	0
Cadmium	ppm	ASTM D5185(m)	<b>0</b>	<1	0

## ADDITIVES

	method	limit/base	current	history1	history2
Boron	ppm	ASTM D5185(m) 4.5	<b>&lt;1</b>	<1	<1
Barium	ppm	ASTM D5185(m) 0.4	<b>&lt;1</b>	0	0
Molybdenum	ppm	ASTM D5185(m) 0	<b>0</b>	0	0
Manganese	ppm	ASTM D5185(m)	<b>0</b>	<1	<1
Magnesium	ppm	ASTM D5185(m) 0	<b>0</b>	0	0
Calcium	ppm	ASTM D5185(m) 0	<b>0</b>	0	<1
Phosphorus	ppm	ASTM D5185(m) 0.7	<b>&lt;1</b>	0	<1
Zinc	ppm	ASTM D5185(m) 0	<b>&lt;1</b>	<1	<1
Sulfur	ppm	ASTM D5185(m) 1315	<b>2064</b>	2091	2100
Lithium	ppm	ASTM D5185(m)	<b>&lt;1</b>	<1	<1

## CONTAMINANTS

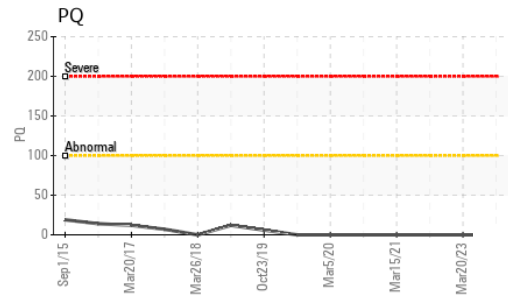
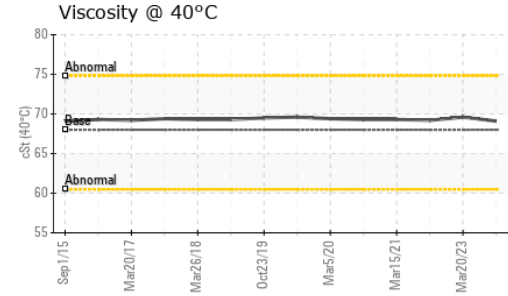
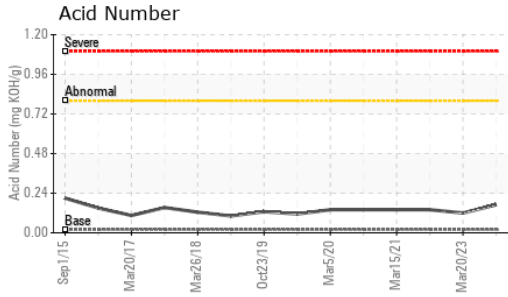
	method	limit/base	current	history1	history2
Silicon	ppm	ASTM D5185(m) >12	<b>0</b>	0	0
Sodium	ppm	ASTM D5185(m)	<b>&lt;1</b>	0	0
Potassium	ppm	ASTM D5185(m) >20	<b>0</b>	0	<1

## FLUID DEGRADATION

	method	limit/base	current	history1	history2
Acid Number (AN)	mg KOH/g	ASTM D974* 0.02	<b>0.17</b>	0.12	0.14



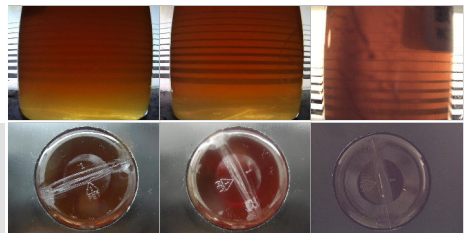
# OIL ANALYSIS REPORT



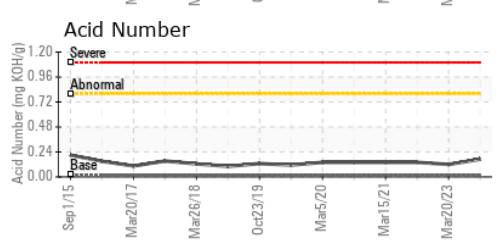
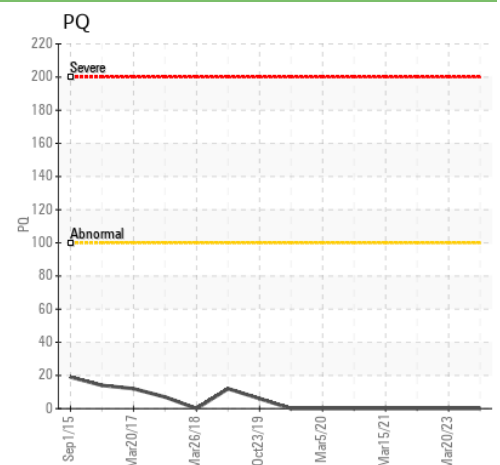
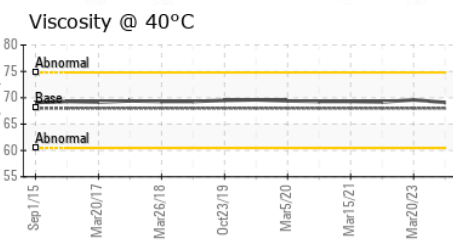
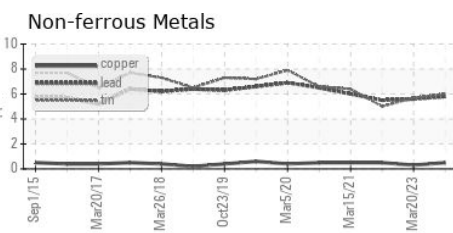
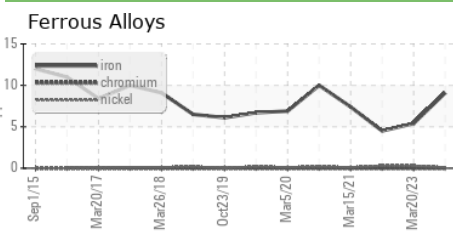
VISUAL	method	limit/base	current	history1	history2
White Metal	scalar	Visual*	NONE	NONE	NONE
Yellow Metal	scalar	Visual*	NONE	NONE	NONE
Precipitate	scalar	Visual*	NONE	NONE	NONE
Silt	scalar	Visual*	NONE	NONE	NONE
Debris	scalar	Visual*	NONE	NONE	NONE
Sand/Dirt	scalar	Visual*	NONE	NONE	NONE
Appearance	scalar	Visual*	NORML	NORML	NORML
Odor	scalar	Visual*	NORML	NORML	NORML
Emulsified Water	scalar	Visual*	>2	NEG	NEG
Free Water	scalar	Visual*		NEG	NEG

FLUID PROPERTIES	method	limit/base	current	history1	history2	
Visc @ 40°C	cSt	ASTM D7279(m)	68	69.1	69.6	69.2

SAMPLE IMAGES	method	limit/base	current	history1	history2
Color					
Bottom					



## GRAPHS



**Laboratory** : WearCheck - C8-1175 Appleby Line, Burlington, ON L7L 5H9  
**Sample No.** : WC0328086 **Received** : 27 Oct 2023  
**Lab Number** : 02592411 **Diagnosed** : 27 Oct 2023  
**Unique Number** : 5669490 **Diagnostician** : Kevin Marson  
**Test Package** : IND 2 ( Additional Tests: TAN Man )

To discuss this sample report, contact Customer Service at 1-800-268-2131.  
 Test denoted (\*) outside scope of accreditation, (m) method modified, (e) tested at external lab.  
 Validity of results and interpretation are based on the sample and information as supplied.

**NEWFOUNDLAND POWER INC.**  
 50 DUFFY PLACE, PO BOX 8910  
 ST. JOHNS, NL  
 CA A1B 3P6  
 Contact: Paul Martin  
 pmartin@newfoundlandpower.com  
 T:  
 F: (709)737-2926