



FUEL REPORT

Sample Rating Trend

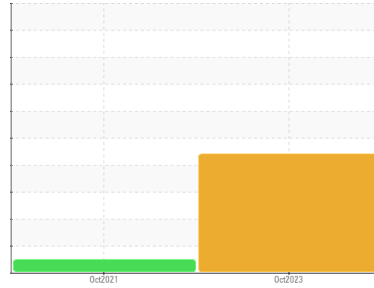
ISO



Area
[328142]
Machine Id
G120360278

Component
Diesel Fuel
Fluid

No.1 DIESEL FUEL (ULTRALOW SULPHUR) (--- GAL)



DIAGNOSIS

Recommendation

Nous vous recommandons de vérifier tous les endroits par lesquels des contaminants peuvent pénétrer dans le système. Les tests de laboratoire indiquent que ce carburant peut être utilisé et qu'il répond à toutes les exigences. Nous vous recommandons de remplacer le filtre et d'utiliser un système de filtrage hors-ligne afin d'améliorer la propreté du fluide. Le reniflard d'air doit être réparé. S'il n'est pas classé, nous vous recommandons de le remplacer par un reniflard à air adapté au micron et / ou au dessicant. Si évalué, nous vous recommandons de réparer / remplacer le reniflard. Nous vous recommandons de filtrer ce fluide avant de l'utiliser. Échantillonner de nouveau dans 30 à 45 jours afin de contrôler la situation.

Corrosion

(sans objet)

Contaminants

Il y a une quantité élevée de matières particulaires (2 à 100 µm de taille) présente dans le carburant. La teneur en eau est négligeable.

Fuel Condition

le carburant peut encore servir si la contamination peut être réduite à un niveau acceptable. Tous les essais en laboratoire indiquent que cet échantillon satisfait aux spécifications pour le carburant diesel à ultra-faible teneur de soufre No.1 (US EPA/CGSB-3.517-3 type A).

SAMPLE INFORMATION

method	limit/base	current	history1	history2
Sample Number	Client Info	CU0018884	CU0018014	---
Sample Date	Client Info	18 Oct 2023	21 Oct 2021	---
Machine Age	hrs	0	0	---
Sample Status		SEVERE	NORMAL	---

PHYSICAL PROPERTIES

method	limit/base	current	history1	history2		
Specific Gravity	ASTM D1298*	0.825	0.816	0.817	---	
Fuel Color	text	Visual Screen*	Clear	Red	Pink	---
Visc @ 40°C	cSt	ASTM D7279(m)	1.8	1.6	1.7	---
Pensky-Martens Flash Point	°C	ASTM D7215*	38	48	48	---

SULFUR CONTENT

method	limit/base	current	history1	history2		
Sulfur	ppm	ASTM D5185(m)	10	11	10	---

DISTILLATION

method	limit/base	current	history1	history2		
Initial Boiling Point	°C	ASTM D2887*	159	154	151	---
5% Distillation Point	°C	ASTM D2887*		171	167	---
10% Distill Point	°C	ASTM D2887*	184	177	177	---
15% Distillation Point	°C	ASTM D2887*		183	182	---
20% Distill Point	°C	ASTM D2887*	196	189	187	---
30% Distill Point	°C	ASTM D2887*	205	199	201	---
40% Distill Point	°C	ASTM D2887*	216	210	214	---
50% Distill Point	°C	ASTM D2887*	227	222	228	---
60% Distill Point	°C	ASTM D2887*	238	233	244	---
70% Distill Point	°C	ASTM D2887*	251	245	256	---
80% Distill Point	°C	ASTM D2887*	264	260	265	---
85% Distillation Point	°C	ASTM D2887*		271	272	---
90% Distill Point	°C	ASTM D2887*	288	282	285	---
95% Distillation Point	°C	ASTM D2887*		300	316	---
Final Boiling Point	°C	ASTM D2887*	309	319	349	---

IGNITION QUALITY

method	limit/base	current	history1	history2	
API Gravity	ASTM D1298*	40.1	41	41	---
Cetane Index	ASTM D4737*	<40.0	47	48	---

CONTAMINANTS

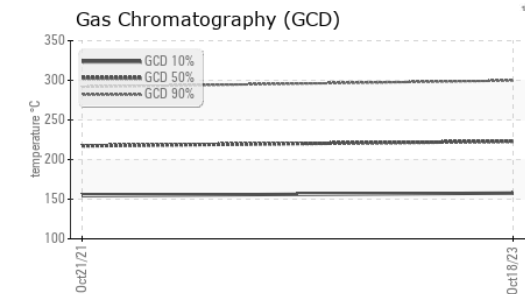
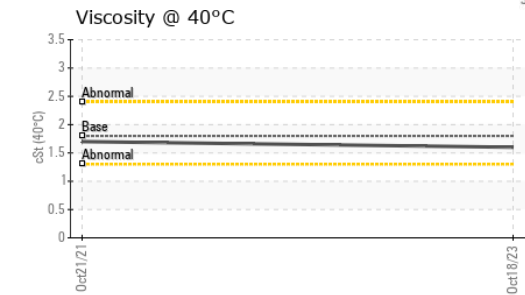
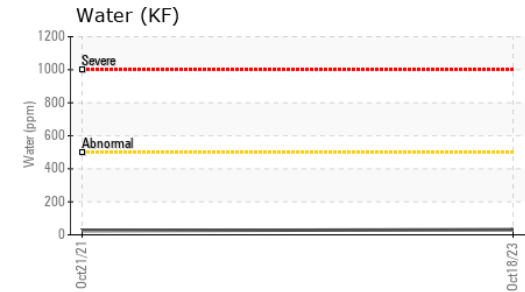
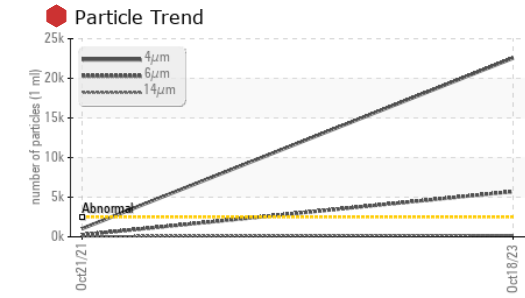
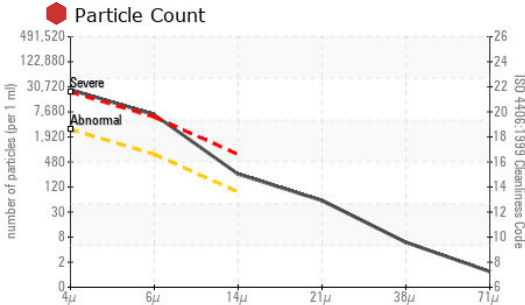
method	limit/base	current	history1	history2		
Silicon	ppm	ASTM D5185(m)	<1.0	0	0	---
Sodium	ppm	ASTM D5185(m)	<0.1	0	<1	---
Potassium	ppm	ASTM D5185(m)	<0.1	<1	0	---
Water	%	ASTM D6304*	<0.05	0.003	0.003	---
ppm Water	ppm	ASTM D6304*	<500	31.2	25.4	---

FLUID CLEANLINESS

method	limit/base	current	history1	history2	
Particles >4µm	ASTM D7647	>2500	22551	1030	---
Particles >6µm	ASTM D7647	>640	5709	248	---
Particles >14µm	ASTM D7647	>80	216	54	---
Particles >21µm	ASTM D7647	>20	50	20	---
Particles >38µm	ASTM D7647	>4	5	2	---
Particles >71µm	ASTM D7647	>3	1	0	---
Oil Cleanliness	ISO 4406 (c)	>18/16/13	22/20/15	17/15/13	---



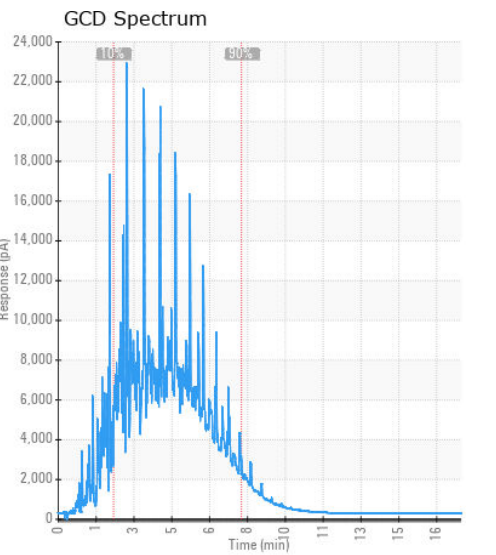
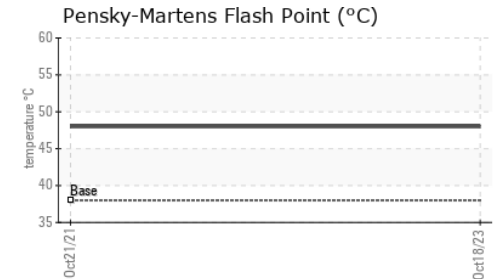
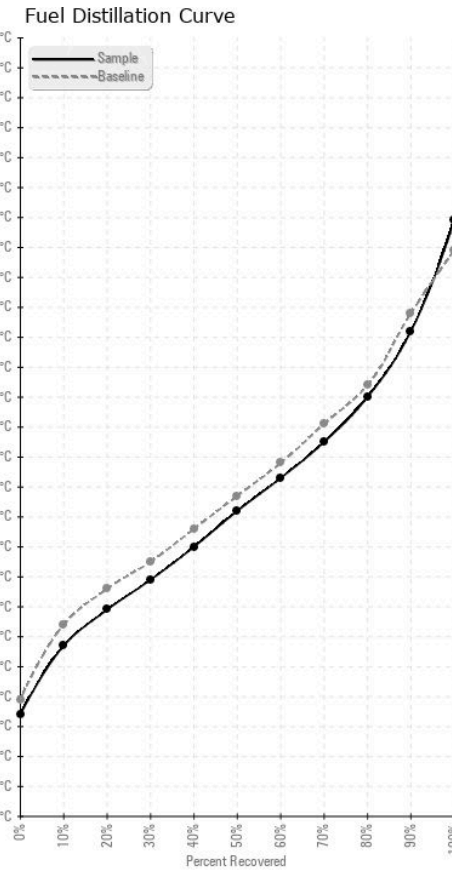
FUEL REPORT



HEAVY METALS		method	limit/base	current	history1	history2
Aluminum	ppm	ASTM D5185(m)	<0.1	0	0	---
Nickel	ppm	ASTM D5185(m)	<0.1	0	0	---
Lead	ppm	ASTM D5185(m)	<0.1	<1	0	---
Vanadium	ppm	ASTM D5185(m)	<0.1	0	0	---
Iron	ppm	ASTM D5185(m)	<0.1	<1	<1	---
Calcium	ppm	ASTM D5185(m)	<0.1	<1	<1	---
Magnesium	ppm	ASTM D5185(m)	<0.1	<1	<1	---
Phosphorus	ppm	ASTM D5185(m)	<0.1	<1	<1	---
Zinc	ppm	ASTM D5185(m)	<0.1	<1	<1	---

SAMPLE IMAGES		method	limit/base	current	history1	history2
Color						no image
Bottom						no image

GRAPHS



Laboratory : WearCheck - C8-1175 Appleby Line, Burlington, ON L7L 5H9
Sample No. : CU0018884
Lab Number : 02592769
Unique Number : 5669848
Test Package : FUEL (Additional Tests: CC Flash, GC-PercFuel, PrtCount)

CUMMINS EASTERN CANADA LP
 315 AV LIBERTE
 CANDIAC, QC
 CA J5R 6Z7
 Contact: Thomas Owens
 is275@cummins.com
 T: (450)638-6863
 F: (450)638-1202

To discuss this sample report, contact Customer Service at 1-800-268-2131.
 Test denoted (*) outside scope of accreditation, (m) method modified, (e) tested at external lab.
 Validity of results and interpretation are based on the sample and information as supplied.