



# FUEL REPORT

Sample Rating Trend

**NORMAL**



Area  
**[49658]**  
Machine Id  
**EXPLOITS ATS**

Component  
**Diesel Fuel**  
Fluid  
**No.2 DIESEL FUEL (ULTRALOW SULPHUR) (--- GAL)**



## DIAGNOSIS

### Recommendation

Laboratory test indicate that this fuel is suitable for use and meets all test requirements. Resample at the next service interval to monitor.

### Corrosion

{not applicable}

### Contaminants

The system cleanliness is acceptable for your target ISO 4406 cleanliness code. The water content is negligible. There is no indication of any contamination in the diesel fuel.

### Fuel Condition

All laboratory tests indicate that this sample meets specifications for No.2 ultra-low-sulfur diesel fuel (US EPA/CGSB-3.517-3 type B).

SAMPLE INFORMATION		method	limit/base	current	history1	history2
Sample Number	Client Info			<b>CU0021675</b>	---	---
Sample Date	Client Info			<b>04 Dec 2023</b>	---	---
Machine Age	hrs	Client Info		<b>0</b>	---	---
Sample Status				<b>NORMAL</b>	---	---

PHYSICAL PROPERTIES		method	limit/base	current	history1	history2
Specific Gravity		ASTM D1298*	0.839	<b>0.847</b>	---	---
Fuel Color	text	Visual Screen*	Yellow	<b>Yellow</b>	---	---
Visc @ 40°C	cSt	ASTM D7279(m)	3.0	<b>2.2</b>	---	---
Pensky-Martens Flash Point	°C	ASTM D7215*	52	<b>59.5</b>	---	---

SULFUR CONTENT		method	limit/base	current	history1	history2
Sulfur	ppm	ASTM D5185(m)	10	<b>14</b>	---	---

DISTILLATION		method	limit/base	current	history1	history2
Initial Boiling Point	°C	ASTM D2887*	165	<b>169</b>	---	---
5% Distillation Point	°C	ASTM D2887*		<b>189</b>	---	---
10% Distill Point	°C	ASTM D2887*	201	<b>200</b>	---	---
15% Distillation Point	°C	ASTM D2887*		<b>208</b>	---	---
20% Distill Point	°C	ASTM D2887*	216	<b>217</b>	---	---
30% Distill Point	°C	ASTM D2887*	230	<b>231</b>	---	---
40% Distill Point	°C	ASTM D2887*	243	<b>243</b>	---	---
50% Distill Point	°C	ASTM D2887*	255	<b>255</b>	---	---
60% Distill Point	°C	ASTM D2887*	267	<b>266</b>	---	---
70% Distill Point	°C	ASTM D2887*	280	<b>278</b>	---	---
80% Distill Point	°C	ASTM D2887*	295	<b>289</b>	---	---
85% Distillation Point	°C	ASTM D2887*		<b>298</b>	---	---
90% Distill Point	°C	ASTM D2887*	310	<b>306</b>	---	---
95% Distillation Point	°C	ASTM D2887*		<b>319</b>	---	---
Final Boiling Point	°C	ASTM D2887*	341	<b>340</b>	---	---

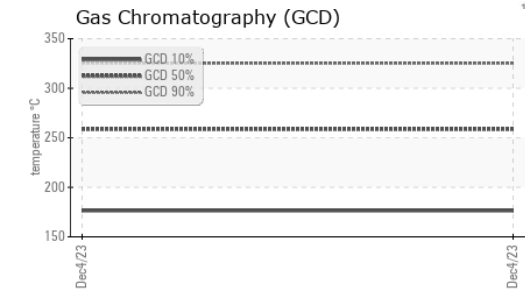
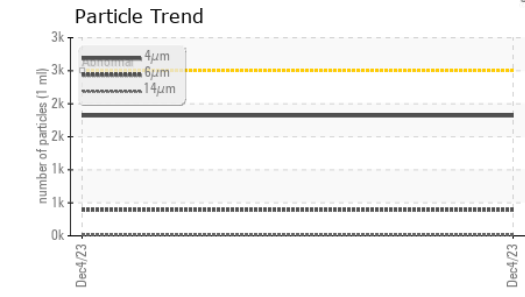
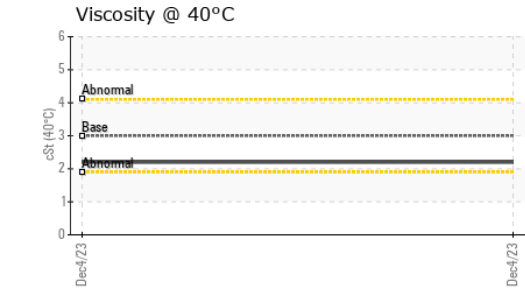
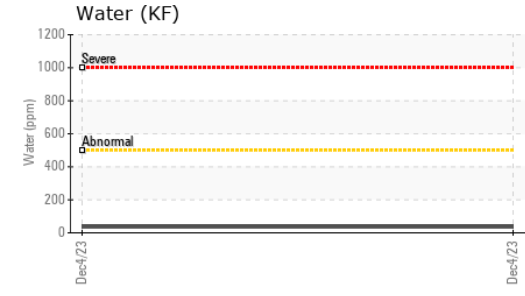
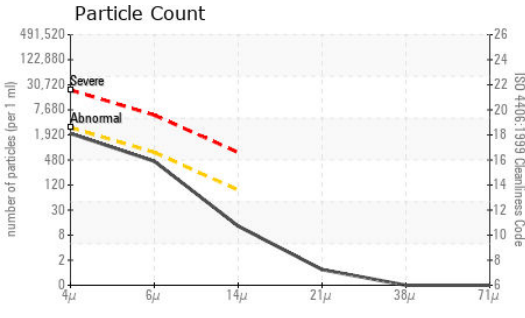
IGNITION QUALITY		method	limit/base	current	history1	history2
API Gravity		ASTM D1298*	37.7	<b>35</b>	---	---
Cetane Index		ASTM D4737*	<40.0	<b>44</b>	---	---

CONTAMINANTS		method	limit/base	current	history1	history2
Silicon	ppm	ASTM D5185(m)	<1.0	<b>0</b>	---	---
Sodium	ppm	ASTM D5185(m)	<0.1	<b>&lt;1</b>	---	---
Potassium	ppm	ASTM D5185(m)	<0.1	<b>&lt;1</b>	---	---
Water	%	ASTM D6304*	<0.05	<b>0.003</b>	---	---
ppm Water	ppm	ASTM D6304*	<500	<b>36</b>	---	---

FLUID CLEANLINESS		method	limit/base	current	history1	history2
Particles >4µm		ASTM D7647	>2500	<b>1819</b>	---	---
Particles >6µm		ASTM D7647	>640	<b>393</b>	---	---
Particles >14µm		ASTM D7647	>80	<b>11</b>	---	---
Particles >21µm		ASTM D7647	>20	<b>1</b>	---	---
Particles >38µm		ASTM D7647	>4	<b>0</b>	---	---
Particles >71µm		ASTM D7647	>3	<b>0</b>	---	---
Oil Cleanliness		ISO 4406 (c)	>18/16/13	<b>18/16/11</b>	---	---



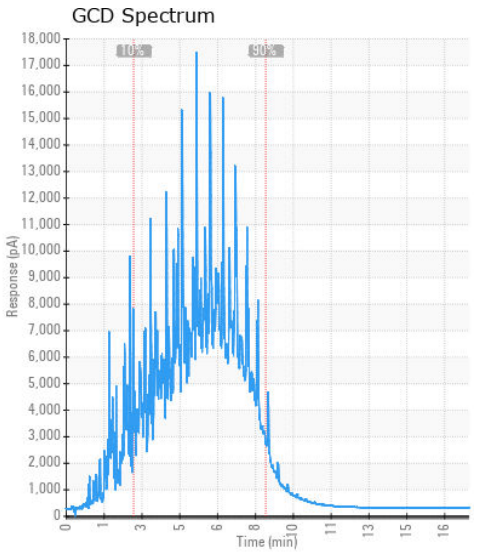
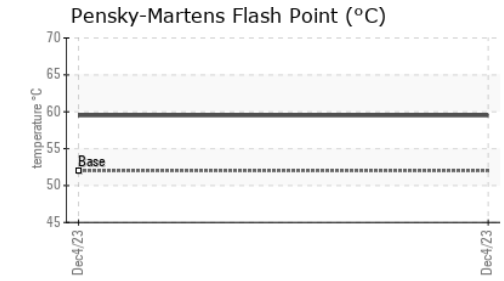
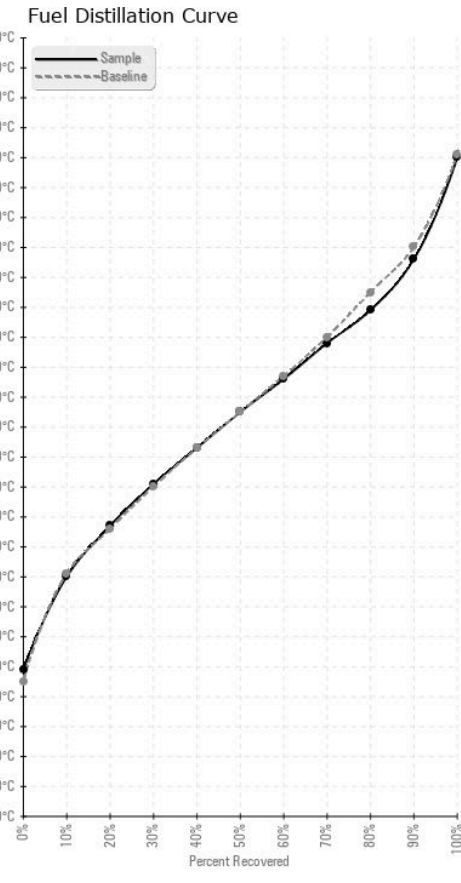
# FUEL REPORT



HEAVY METALS	method	limit/base	current	history1	history2
Aluminum	ppm	ASTM D5185(m)	<0.1	0	---
Nickel	ppm	ASTM D5185(m)	<0.1	0	---
Lead	ppm	ASTM D5185(m)	<0.1	0	---
Vanadium	ppm	ASTM D5185(m)	<0.1	0	---
Iron	ppm	ASTM D5185(m)	<0.1	<1	---
Calcium	ppm	ASTM D5185(m)	<0.1	0	---
Magnesium	ppm	ASTM D5185(m)	<0.1	0	---
Phosphorus	ppm	ASTM D5185(m)	<0.1	0	---
Zinc	ppm	ASTM D5185(m)	<0.1	0	---

SAMPLE IMAGES	method	limit/base	current	history1	history2
Color				no image	no image
Bottom				no image	no image

## GRAPHS



**Laboratory** : WearCheck - C8-1175 Appleby Line, Burlington, ON L7L 5H9  
**Sample No.** : CU0021675  
**Lab Number** : 02601072  
**Unique Number** : 5694157  
**Test Package** : FUEL ( Additional Tests: CC Flash, GC-PercFuel, PrtCount )

**CUMMINS EASTERN CANADA INC.**  
 122 CLYDE AVENUE  
 MOUNT PEARL, NL  
 CA A1N 4S3  
 Contact: JUANITA BRANTON  
 JUANITA.BRANTON@CUMMINS.COM  
 T: (709)747-0157  
 F: (709)747-1084

To discuss this sample report, contact Customer Service at 1-800-268-2131.  
 Test denoted (\*) outside scope of accreditation, (m) method modified, (e) tested at external lab.  
 Validity of results and interpretation are based on the sample and information as supplied.