



OIL ANALYSIS REPORT

Sample Rating Trend

NORMAL



Area
[520755]
 Machine Id
1957748
 Component
Unknown Component
 Fluid
NOT GIVEN (--- GAL)



DIAGNOSIS

Recommendation

This is a baseline read-out on the submitted sample.

Wear

{not applicable}

Contaminants

ISO Cleanliness Code (ISO 4406:1999): 24/22/17;
 Cumulative particle counts >4µm = 94261, >6µm = 38033, >14µm = 663, >21µm = 27, >38µm = 2, >71µm = 1.

Oil Condition

{not applicable}

SAMPLE INFORMATION

method	limit/base	current	history1	history2
Sample Number	Client Info	PP	---	---
Sample Date	Client Info	06 Dec 2023	---	---
Machine Age	hrs Client Info	0	---	---
Oil Age	hrs Client Info	0	---	---
Oil Changed	Client Info	N/A	---	---
Sample Status		NORMAL	---	---

CONTAMINATION

method	limit/base	current	history1	history2
Water	WC Method	NEG	---	---

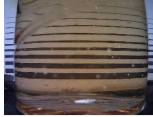

FLUID CLEANLINESS

method	limit/base	current	history1	history2
Particles >4µm	ASTM D7647 >5000	94261	---	---
Particles >6µm	ASTM D7647 >1300	38033	---	---
Particles >14µm	ASTM D7647 >160	663	---	---
Particles >21µm	ASTM D7647 >40	27	---	---
Particles >38µm	ASTM D7647 >10	2	---	---
Particles >71µm	ASTM D7647 >3	1	---	---
Oil Cleanliness	ISO 4406 (c) >19/17/14	24/22/17	---	---

VISUAL

method	limit/base	current	history1	history2
White Metal	scalar Visual* NONE	NONE	---	---
Yellow Metal	scalar Visual* NONE	NONE	---	---
Precipitate	scalar Visual* NONE	NONE	---	---
Silt	scalar Visual* NONE	NONE	---	---
Debris	scalar Visual* NONE	NONE	---	---
Sand/Dirt	scalar Visual* NONE	NONE	---	---
Appearance	scalar Visual* NORML	NORML	---	---
Odor	scalar Visual* NORML	NORML	---	---

SAMPLE IMAGES

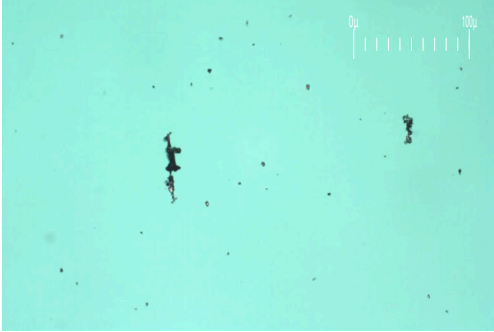
method	limit/base	current	history1	history2
Color			no image	no image
Bottom			no image	no image



FERROGRAPHY REPORT

Area
[520755]
 Machine Id
1957748
 Component
Unknown Component
 Fluid
NOT GIVEN (--- GAL)

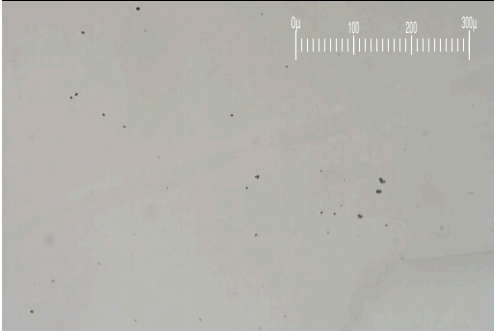
Magn: 200x Illum: BC



Magn: 50x Illum: RW



Magn: 100x Illum: RW



FERROGRAPHY	method	limit/base	current	history1	history2
Ferrous Rubbing	Scale 0-10 ASTM D7684*		█ 2		
Ferrous Sliding	Scale 0-10 ASTM D7684*				
Ferrous Cutting	Scale 0-10 ASTM D7684*				
Ferrous Rolling	Scale 0-10 ASTM D7684*		█ 1		
Ferrous Break-in	Scale 0-10 ASTM D7684*				
Ferrous Spheres	Scale 0-10 ASTM D7684*				
Ferrous Black Oxides	Scale 0-10 ASTM D7684*		█ 1		
Ferrous Red Oxides	Scale 0-10 ASTM D7684*				
Ferrous Corrosive	Scale 0-10 ASTM D7684*				
Ferrous Other	Scale 0-10 ASTM D7684*				
Nonferrous Rubbing	Scale 0-10 ASTM D7684*				
Nonferrous Sliding	Scale 0-10 ASTM D7684*				
Nonferrous Cutting	Scale 0-10 ASTM D7684*				
Nonferrous Rolling	Scale 0-10 ASTM D7684*				
Nonferrous Other	Scale 0-10 ASTM D7684*				
Carbonaceous Material	Scale 0-10 ASTM D7684*				
Lubricant Degradation	Scale 0-10 ASTM D7684*				
Sand/Dirt	Scale 0-10 ASTM D7684*		█ 1		
Fibres	Scale 0-10 ASTM D7684*				
Spheres	Scale 0-10 ASTM D7684*				
Other	Scale 0-10 ASTM D7684*		█ 2		

WEAR

{not applicable}