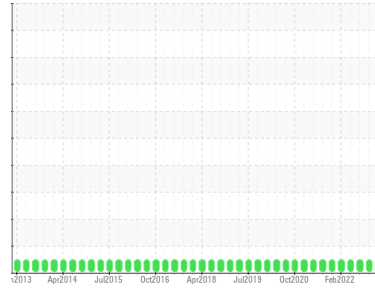




# OIL ANALYSIS REPORT

Sample Rating Trend

**NORMAL**



Area

**6**

Machine Id

**6-3-740 EAST DRAG CHAIN - GEARBOX**

Component

**Gearbox**

Fluid

**MOBIL MOBILGEAR 600 XP 220 (30 LTR)**

## DIAGNOSIS

### Recommendation

Resample at the next service interval to monitor.

### Wear

All component wear rates are normal.

### Contamination

There is no indication of any contamination in the oil.

### Fluid Condition

The AN level is acceptable for this fluid. The condition of the oil is suitable for further service.

SAMPLE INFORMATION		method	limit/base	current	history1	history2
Sample Number	Client Info			<b>WC0869904</b>	WC0751928	WC0714958
Sample Date	Client Info			<b>23 Nov 2023</b>	08 Nov 2022	28 Jul 2022
Machine Age	hrs	Client Info		<b>0</b>	0	0
Oil Age	hrs	Client Info		<b>0</b>	0	0
Oil Changed	Client Info			<b>N/A</b>	N/A	N/A
Sample Status				<b>NORMAL</b>	NORMAL	NORMAL

CONTAMINATION		method	limit/base	current	history1	history2
Water	WC Method		>0.2	<b>NEG</b>	NEG	NEG

WEAR METALS		method	limit/base	current	history1	history2
PQ		ASTM D8184*		<b>0</b>	0	0
Iron	ppm	ASTM D5185(m)	>200	<b>4</b>	21	18
Chromium	ppm	ASTM D5185(m)	>15	<b>0</b>	0	0
Nickel	ppm	ASTM D5185(m)	>15	<b>&lt;1</b>	<1	<1
Titanium	ppm	ASTM D5185(m)		<b>0</b>	0	0
Silver	ppm	ASTM D5185(m)		<b>&lt;1</b>	0	0
Aluminum	ppm	ASTM D5185(m)	>25	<b>&lt;1</b>	<1	<1
Lead	ppm	ASTM D5185(m)	>100	<b>&lt;1</b>	<1	0
Copper	ppm	ASTM D5185(m)	>200	<b>&lt;1</b>	0	0
Tin	ppm	ASTM D5185(m)	>25	<b>0</b>	0	0
Antimony	ppm	ASTM D5185(m)	>5	<b>0</b>	0	0
Vanadium	ppm	ASTM D5185(m)		<b>0</b>	0	0
Beryllium	ppm	ASTM D5185(m)		<b>0</b>	0	0
Cadmium	ppm	ASTM D5185(m)		<b>0</b>	0	0

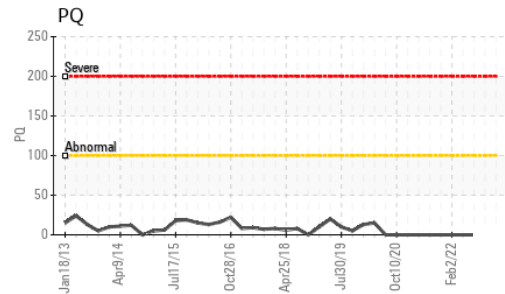
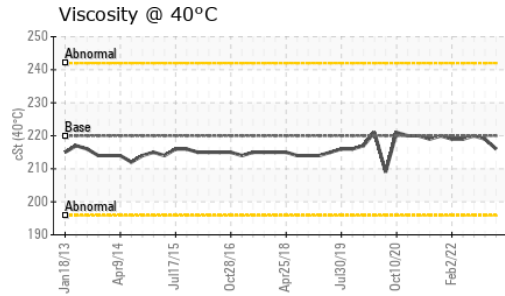
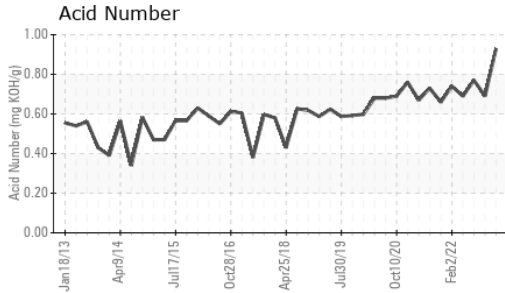
ADDITIVES		method	limit/base	current	history1	history2
Boron	ppm	ASTM D5185(m)		<b>2</b>	19	18
Barium	ppm	ASTM D5185(m)		<b>&lt;1</b>	0	0
Molybdenum	ppm	ASTM D5185(m)		<b>0</b>	0	0
Manganese	ppm	ASTM D5185(m)		<b>0</b>	<1	<1
Magnesium	ppm	ASTM D5185(m)		<b>0</b>	0	<1
Calcium	ppm	ASTM D5185(m)		<b>3</b>	13	14
Phosphorus	ppm	ASTM D5185(m)		<b>286</b>	353	322
Zinc	ppm	ASTM D5185(m)		<b>&lt;1</b>	2	3
Sulfur	ppm	ASTM D5185(m)		<b>899</b>	14678	14544
Lithium	ppm	ASTM D5185(m)		<b>&lt;1</b>	<1	<1

CONTAMINANTS		method	limit/base	current	history1	history2
Silicon	ppm	ASTM D5185(m)	>50	<b>5</b>	3	2
Sodium	ppm	ASTM D5185(m)		<b>&lt;1</b>	<1	<1
Potassium	ppm	ASTM D5185(m)	>20	<b>&lt;1</b>	1	<1

FLUID DEGRADATION		method	limit/base	current	history1	history2
Acid Number (AN)	mg KOH/g	ASTM D974*		<b>0.93</b>	0.69	0.77



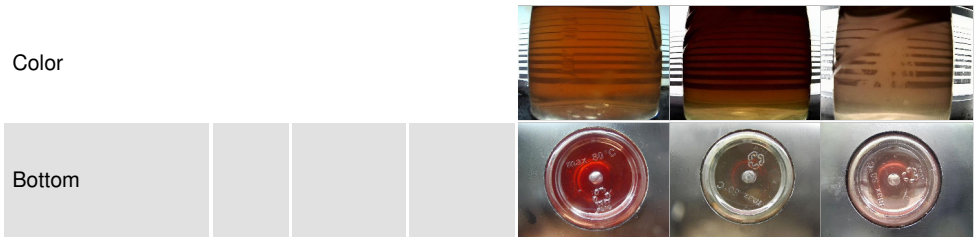
# OIL ANALYSIS REPORT



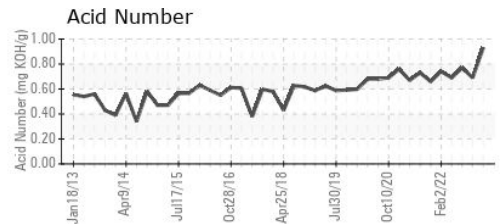
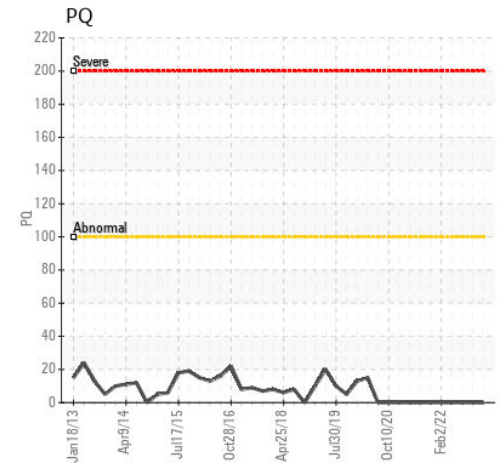
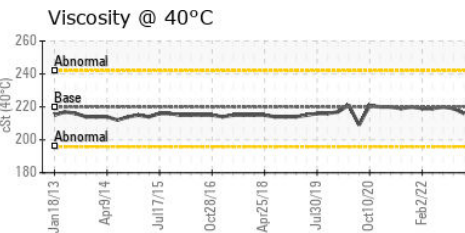
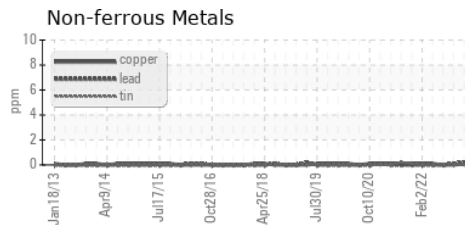
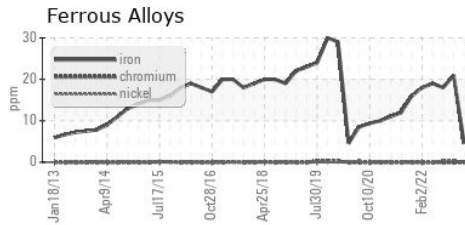
VISUAL	method	limit/base	current	history1	history2
White Metal	scalar	Visual*	NONE	NONE	NONE
Yellow Metal	scalar	Visual*	NONE	NONE	NONE
Precipitate	scalar	Visual*	NONE	NONE	NONE
Silt	scalar	Visual*	NONE	NONE	VLITE
Debris	scalar	Visual*	NONE	NONE	NONE
Sand/Dirt	scalar	Visual*	NONE	VLITE	NONE
Appearance	scalar	Visual*	NORML	NORML	NORML
Odor	scalar	Visual*	NORML	NORML	NORML
Emulsified Water	scalar	Visual*	>0.2	NEG	NEG
Free Water	scalar	Visual*		NEG	NEG

FLUID PROPERTIES	method	limit/base	current	history1	history2
Visc @ 40°C	cSt	ASTM D7279(m)	220	216	219

SAMPLE IMAGES	method	limit/base	current	history1	history2
---------------	--------	------------	---------	----------	----------



## GRAPHS



**Laboratory** : WearCheck - C8-1175 Appleby Line, Burlington, ON L7L 5H9  
**Sample No.** : WC0869904 **Received** : 08 Dec 2023  
**Lab Number** : 02602049 **Diagnosed** : 09 Dec 2023  
**Unique Number** : 5695134 **Diagnostician** : Wes Davis  
**Test Package** : IND 2 ( Additional Tests: TAN Man )

To discuss this sample report, contact Customer Service at 1-800-268-2131.  
 Test denoted (\*) outside scope of accreditation, (m) method modified, (e) tested at external lab.  
 Validity of results and interpretation are based on the sample and information as supplied.

**ST. MARYS CEMENT CO.**  
 400 BOWMANVILLE AVENUE  
 BOWMANVILLE, ON  
 CA L1C 7B5  
 Contact: Lou Traiforos  
 lou.traiforos@vcimentos.com  
 T: (905)440-5874  
 F: (905)623-4695