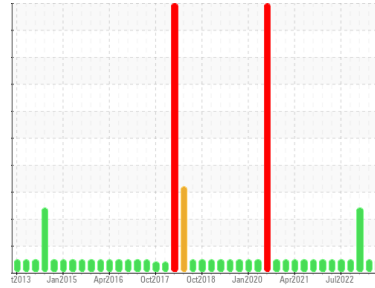




# OIL ANALYSIS REPORT

Sample Rating Trend



**NORMAL**



Area

**5**

Machine Id

**5-3-362 Atox Tower Elevator**

Component

**Gearbox**

Fluid

**MOBIL SHC 630 (30 LTR)**

## DIAGNOSIS

### Recommendation

Resample at the next service interval to monitor.

### Wear

All component wear rates are normal.

### Contamination

There is no indication of any contamination in the oil.

### Fluid Condition

The AN level is acceptable for this fluid. The condition of the oil is suitable for further service.

## SAMPLE INFORMATION

method	limit/base	current	history1	history2
Sample Number	Client Info	<b>WC0869878</b>	WC0842683	WC0818150
Sample Date	Client Info	<b>01 Nov 2023</b>	15 Aug 2023	15 May 2023
Machine Age	hrs	Client Info	<b>0</b>	0
Oil Age	hrs	Client Info	<b>0</b>	0
Oil Changed	Client Info	<b>N/A</b>	N/A	N/A
Sample Status		<b>NORMAL</b>	NORMAL	ABNORMAL

## CONTAMINATION

method	limit/base	current	history1	history2
Water	WC Method >0.2	<b>NEG</b>	NEG	NEG

## WEAR METALS

method	limit/base	current	history1	history2
PQ	ASTM D8184*	<b>33</b>	0	▲ 846
Iron	ppm ASTM D5185(m) >200	<b>25</b>	12	90
Chromium	ppm ASTM D5185(m) >15	<b>0</b>	0	<1
Nickel	ppm ASTM D5185(m) >15	<b>&lt;1</b>	<1	<1
Titanium	ppm ASTM D5185(m)	<b>0</b>	0	<1
Silver	ppm ASTM D5185(m)	<b>&lt;1</b>	0	0
Aluminum	ppm ASTM D5185(m) >25	<b>2</b>	<1	6
Lead	ppm ASTM D5185(m) >100	<b>0</b>	0	0
Copper	ppm ASTM D5185(m) >200	<b>&lt;1</b>	<1	<1
Tin	ppm ASTM D5185(m) >25	<b>0</b>	0	0
Antimony	ppm ASTM D5185(m) >5	<b>0</b>	0	<1
Vanadium	ppm ASTM D5185(m)	<b>0</b>	0	0
Beryllium	ppm ASTM D5185(m)	<b>0</b>	0	0
Cadmium	ppm ASTM D5185(m)	<b>0</b>	0	0

## ADDITIVES

method	limit/base	current	history1	history2
Boron	ppm ASTM D5185(m) 0.3	<b>&lt;1</b>	<1	<1
Barium	ppm ASTM D5185(m) 0.0	<b>0</b>	0	0
Molybdenum	ppm ASTM D5185(m) 0.0	<b>0</b>	0	0
Manganese	ppm ASTM D5185(m) 0.0	<b>0</b>	0	1
Magnesium	ppm ASTM D5185(m) 0.1	<b>1</b>	<1	4
Calcium	ppm ASTM D5185(m) 0.0	<b>30</b>	8	▲ 119
Phosphorus	ppm ASTM D5185(m) 864	<b>253</b>	303	348
Zinc	ppm ASTM D5185(m) 2.0	<b>&lt;1</b>	1	<1
Sulfur	ppm ASTM D5185(m) 36	<b>493</b>	536	556
Lithium	ppm ASTM D5185(m)	<b>&lt;1</b>	<1	<1

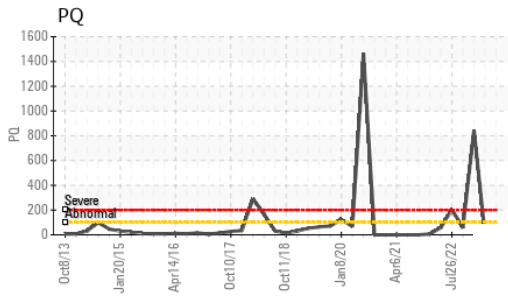
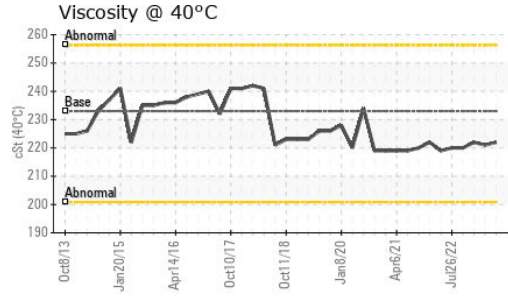
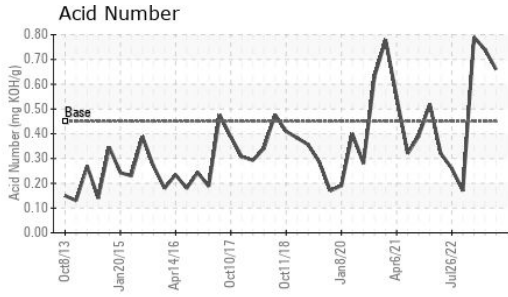
## CONTAMINANTS

method	limit/base	current	history1	history2
Silicon	ppm ASTM D5185(m) >50	<b>9</b>	5	26
Sodium	ppm ASTM D5185(m)	<b>&lt;1</b>	<1	<1
Potassium	ppm ASTM D5185(m) >20	<b>0</b>	<1	3

## FLUID DEGRADATION

method	limit/base	current	history1	history2
Acid Number (AN)	mg KOH/g ASTM D974* 0.45	<b>0.66</b>	0.74	0.79

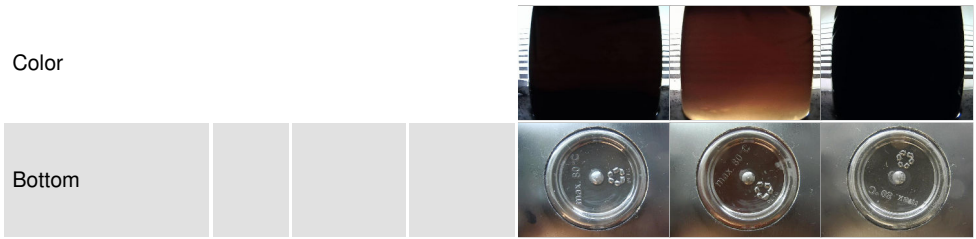
# OIL ANALYSIS REPORT



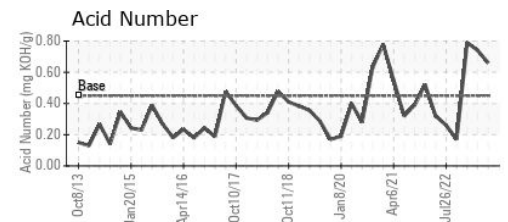
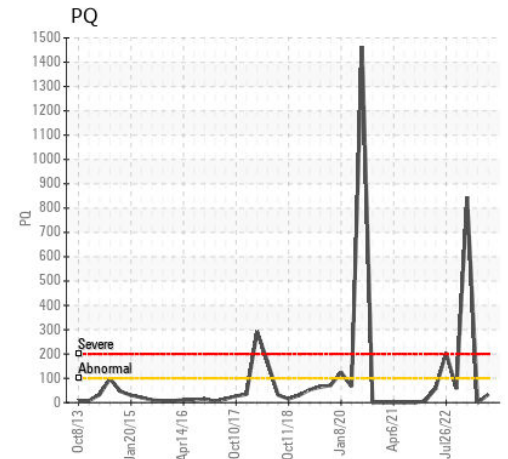
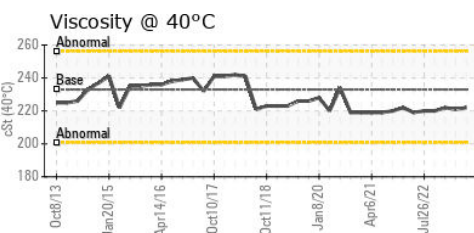
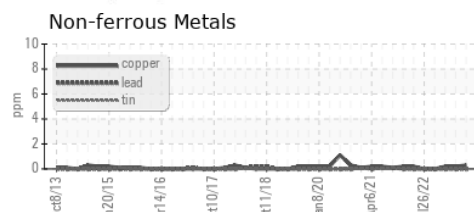
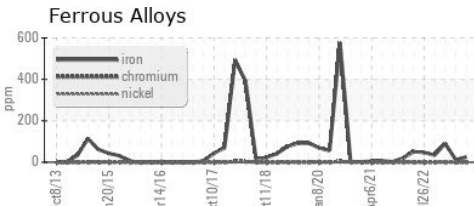
VISUAL	method	limit/base	current	history1	history2
White Metal	scalar	Visual*	NONE	NONE	NONE
Yellow Metal	scalar	Visual*	NONE	NONE	NONE
Precipitate	scalar	Visual*	NONE	NONE	NONE
Silt	scalar	Visual*	NONE	NONE	NONE
Debris	scalar	Visual*	NONE	NONE	NONE
Sand/Dirt	scalar	Visual*	NONE	NONE	NONE
Appearance	scalar	Visual*	NORML	NORML	NORML
Odor	scalar	Visual*	NORML	NORML	NORML
Emulsified Water	scalar	Visual*	>0.2	NEG	NEG
Free Water	scalar	Visual*		NEG	NEG

FLUID PROPERTIES	method	limit/base	current	history1	history2
Visc @ 40°C	cSt	ASTM D7279(m)	233	221	222

SAMPLE IMAGES	method	limit/base	current	history1	history2
---------------	--------	------------	---------	----------	----------



## GRAPHS



**Laboratory** : WearCheck - C8-1175 Appleby Line, Burlington, ON L7L 5H9  
**Sample No.** : WC0869878 **Received** : 08 Dec 2023  
**Lab Number** : 02602061 **Diagnosed** : 11 Dec 2023  
**Unique Number** : 5695146 **Diagnostician** : Kevin Marson  
**Test Package** : IND 2 ( Additional Tests: TAN Man )

**ST. MARYS CEMENT CO.**  
 400 BOWMANVILLE AVENUE  
 BOWMANVILLE, ON  
 CA L1C 7B5  
 Contact: Lou Traiforos  
 lou.traiforos@vcimentos.com  
 T: (905)440-5874  
 F: (905)623-4695

To discuss this sample report, contact Customer Service at 1-800-268-2131.  
 Test denoted (\*) outside scope of accreditation, (m) method modified, (e) tested at external lab.  
 Validity of results and interpretation are based on the sample and information as supplied.