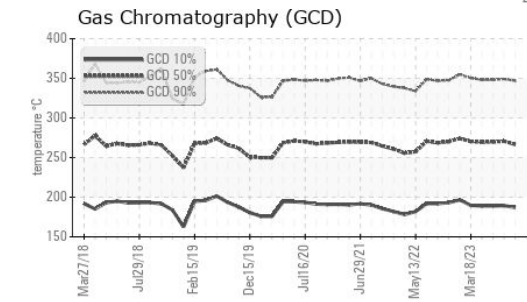
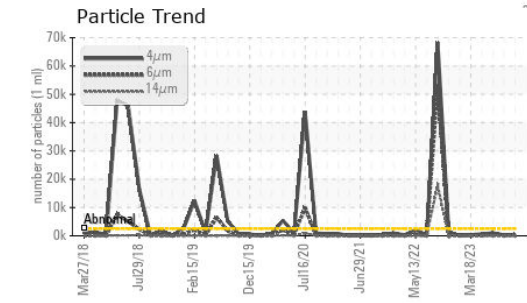
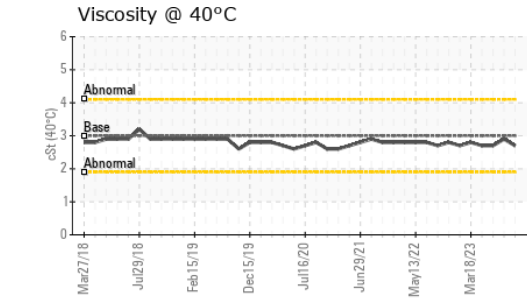
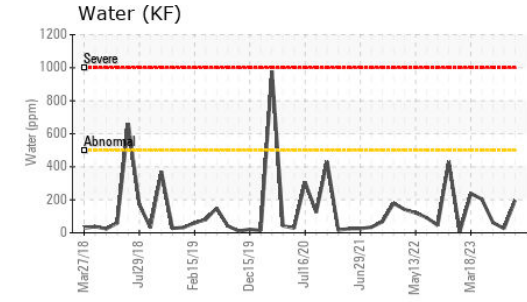
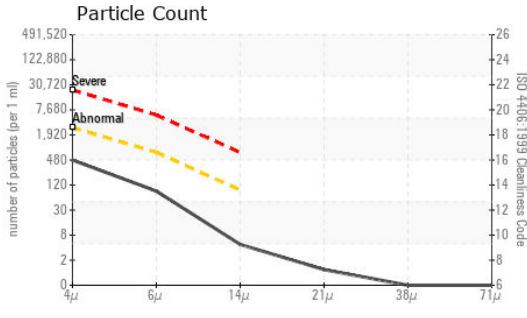






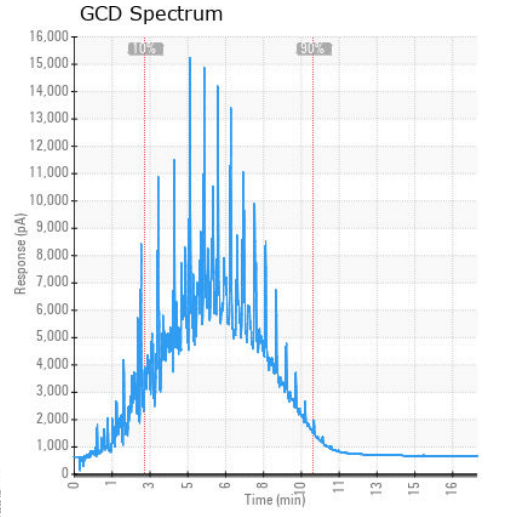
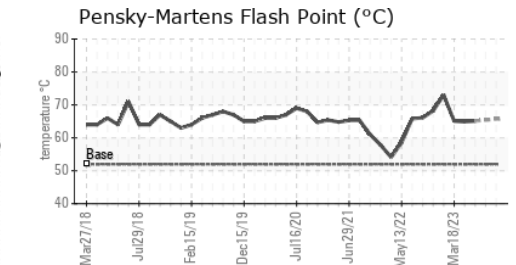
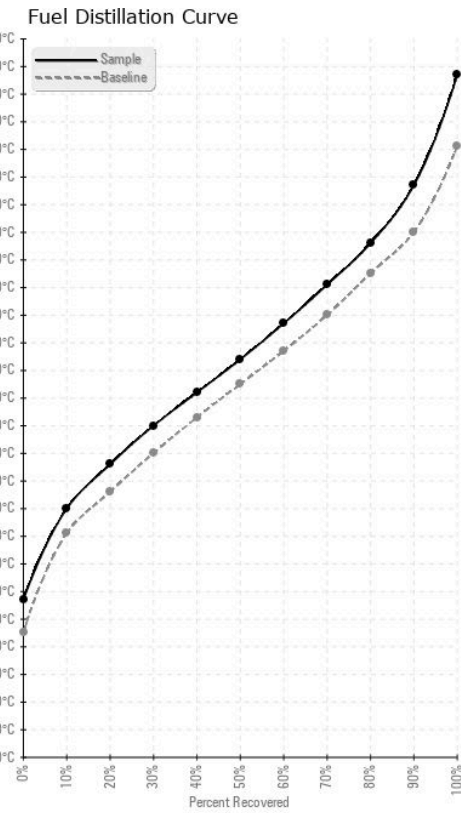
# FUEL REPORT



HEAVY METALS	method	limit/base	current	history1	history2
Aluminum	ppm	ASTM D5185(m)	<0.1	0	0
Nickel	ppm	ASTM D5185(m)	<0.1	0	0
Lead	ppm	ASTM D5185(m)	<0.1	0	0
Vanadium	ppm	ASTM D5185(m)	<0.1	0	0
Iron	ppm	ASTM D5185(m)	<1	<1	<1
Calcium	ppm	ASTM D5185(m)	<1	<1	<1
Magnesium	ppm	ASTM D5185(m)	0	0	0
Phosphorus	ppm	ASTM D5185(m)	<1	<1	<1
Zinc	ppm	ASTM D5185(m)	<1	<1	<1

SAMPLE IMAGES	method	limit/base	current	history1	history2
Color					
Bottom					

## GRAPHS



**Laboratory** : WearCheck - C8-1175 Appleby Line, Burlington, ON L7L 5H9  
**Sample No.** : PP13920747  
**Lab Number** : 02602443  
**Unique Number** : 5695528  
**Test Package** : FUEL ( Additional Tests: CC Flash, GC-PercFuel, PrtCount )

**ExxonMobil Canada East Ltd.**  
 Hebron-Materials and Repair Coordin, Suite 1000, 100 New Gow  
 St. John's, NL  
 CA A1C 6K3  
 Contact: Liam Maher  
 liam.m.maher@exxonmobil.com  
 T: (709)273-3729  
 F:

To discuss this sample report, contact Customer Service at 1-800-268-2131.  
 Test denoted (\*) outside scope of accreditation, (m) method modified, (e) tested at external lab.  
 Validity of results and interpretation are based on the sample and information as supplied.