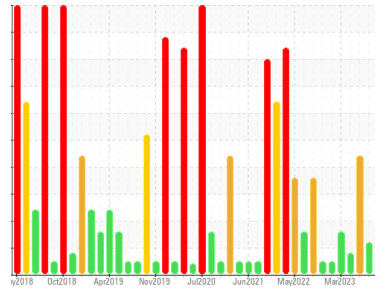




# FUEL REPORT

Sample Rating Trend



**NORMAL**



Machine Id  
**TDT411202C DIESEL DAY TANK FIRE WATER PUMP C**

Component  
**Diesel Fuel**  
Fluid

**No.2 DIESEL FUEL (ULTRALOW SULPHUR) (--- GAL)**

## DIAGNOSIS

### Recommendation

Laboratory test indicate that this fuel is suitable for use and meets all test requirements. Resample at the next service interval to monitor.

### Corrosion

{not applicable}

### Contaminants

The system cleanliness is acceptable for your target ISO 4406 cleanliness code. The water content is negligible. There is no indication of any contamination in the diesel fuel.

### Fuel Condition

All laboratory tests indicate that this sample meets specifications for No.2 ultra-low-sulfur diesel fuel (US EPA/CGSB-3.517-3 type B).

SAMPLE INFORMATION		method	limit/base	current	history1	history2
Sample Number	Client Info			<b>PP13920747</b>	PP13899605	PP13878485
Sample Date	Client Info			<b>07 Nov 2023</b>	06 Aug 2023	10 Jul 2023
Machine Age	hrs	Client Info		<b>0</b>	0	0
Sample Status				<b>NORMAL</b>	ATTENTION	ABNORMAL

PHYSICAL PROPERTIES		method	limit/base	current	history1	history2
Specific Gravity		ASTM D1298*	0.839	<b>0.842</b>	0.841	0.842
Fuel Color	text	Visual Screen*	Yellow	<b>Yellow</b>	Yellow	Yellow
Visc @ 40°C	cSt	ASTM D7279(m)	3.0	<b>2.7</b>	2.7	2.8
Pensky-Martens Flash Point	°C	ASTM D7215*	52	<b>66.9</b>	74.1	73.8

SULFUR CONTENT		method	limit/base	current	history1	history2
Sulfur	ppm	ASTM D5185(m)	10	<b>9</b>	8	8

DISTILLATION		method	limit/base	current	history1	history2
Initial Boiling Point	°C	ASTM D2887*	165	<b>178</b>	186	186
5% Distillation Point	°C	ASTM D2887*		<b>198</b>	206	206
10% Distill Point	°C	ASTM D2887*	201	<b>209</b>	215	214
15% Distillation Point	°C	ASTM D2887*		<b>217</b>	222	222
20% Distill Point	°C	ASTM D2887*	216	<b>226</b>	229	229
30% Distill Point	°C	ASTM D2887*	230	<b>241</b>	243	243
40% Distill Point	°C	ASTM D2887*	243	<b>253</b>	255	255
50% Distill Point	°C	ASTM D2887*	255	<b>266</b>	267	267
60% Distill Point	°C	ASTM D2887*	267	<b>280</b>	280	280
70% Distill Point	°C	ASTM D2887*	280	<b>293</b>	293	293
80% Distill Point	°C	ASTM D2887*	295	<b>309</b>	307	307
85% Distillation Point	°C	ASTM D2887*		<b>320</b>	317	317
90% Distill Point	°C	ASTM D2887*	310	<b>331</b>	327	327
95% Distillation Point	°C	ASTM D2887*		<b>350</b>	345	344
Final Boiling Point	°C	ASTM D2887*	341	<b>374</b>	365	364

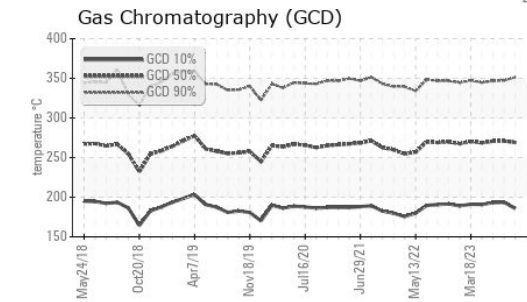
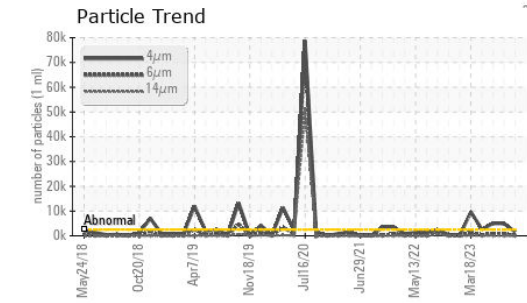
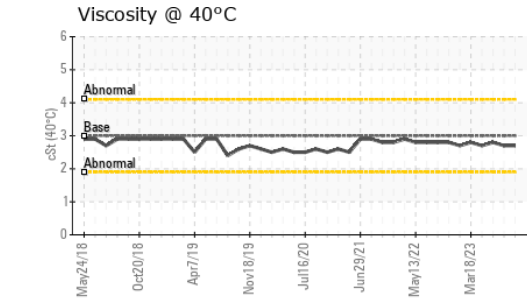
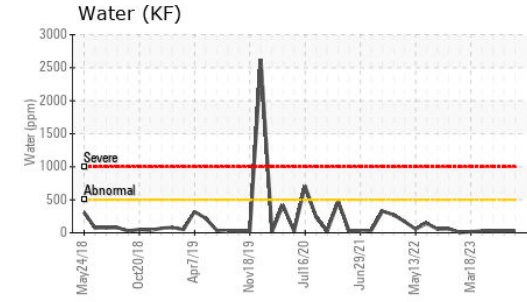
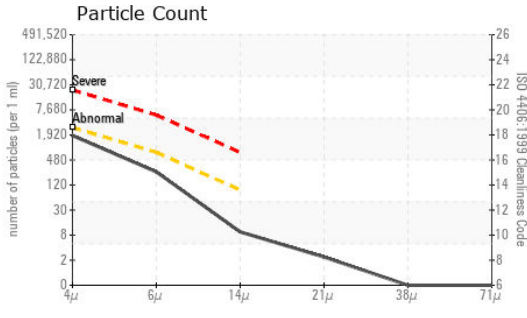
IGNITION QUALITY		method	limit/base	current	history1	history2
API Gravity		ASTM D1298*	37.7	<b>36</b>	36	36
Cetane Index		ASTM D4737*	<40.0	<b>49</b>	50	49

CONTAMINANTS		method	limit/base	current	history1	history2
Silicon	ppm	ASTM D5185(m)	<1.0	<b>0</b>	0	0
Sodium	ppm	ASTM D5185(m)	<0.1	<b>0</b>	0	0
Potassium	ppm	ASTM D5185(m)	<0.1	<b>&lt;1</b>	<1	<1
Water	%	ASTM D6304*	<0.05	<b>0.003</b>	0.002	0.003
ppm Water	ppm	ASTM D6304*	<500	<b>29</b>	24.2	26.7

FLUID CLEANLINESS		method	limit/base	current	history1	history2
Particles >4µm		ASTM D7647	>2500	<b>1624</b>	▲ 4968	▲ 4980
Particles >6µm		ASTM D7647	>640	<b>219</b>	▲ 706	▲ 780
Particles >14µm		ASTM D7647	>80	<b>8</b>	47	▲ 87
Particles >21µm		ASTM D7647	>20	<b>2</b>	15	▲ 32
Particles >38µm		ASTM D7647	>4	<b>0</b>	0	3
Particles >71µm		ASTM D7647	>3	<b>0</b>	0	0
Oil Cleanliness		ISO 4406 (c)	>18/16/13	<b>18/15/10</b>	▲ 19/17/13	▲ 19/17/14



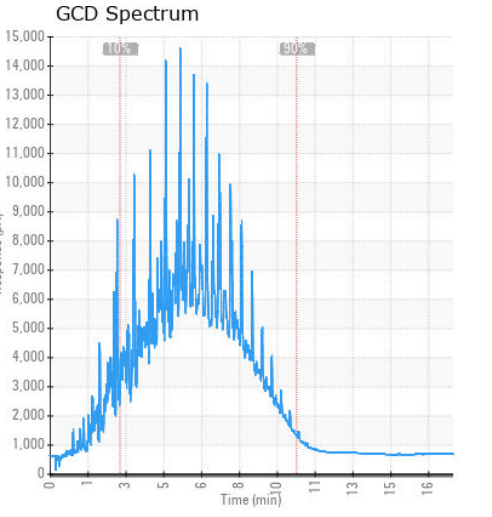
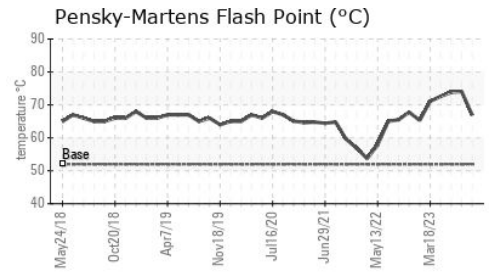
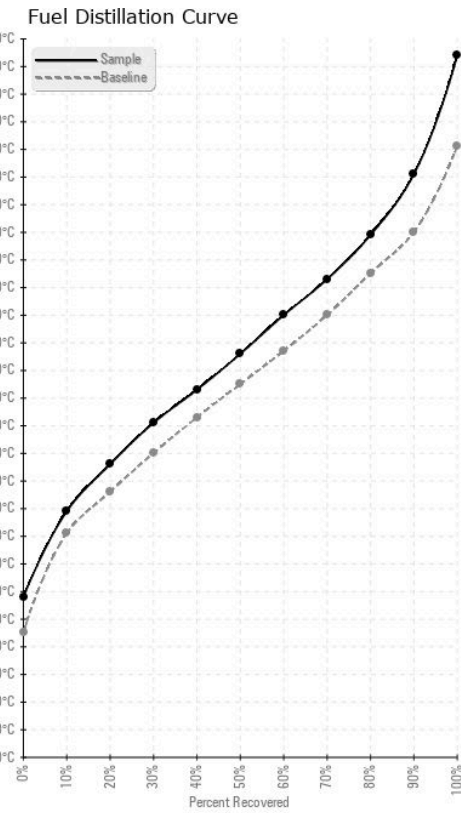
# FUEL REPORT



HEAVY METALS	method	limit/base	current	history1	history2
Aluminum	ppm	ASTM D5185(m)	<0.1	0	0
Nickel	ppm	ASTM D5185(m)	<0.1	0	0
Lead	ppm	ASTM D5185(m)	<0.1	0	0
Vanadium	ppm	ASTM D5185(m)	<0.1	0	0
Iron	ppm	ASTM D5185(m)	<1	<1	<1
Calcium	ppm	ASTM D5185(m)	<0.1	0	0
Magnesium	ppm	ASTM D5185(m)	<0.1	0	0
Phosphorus	ppm	ASTM D5185(m)	<0.1	0	0
Zinc	ppm	ASTM D5185(m)	<0.1	0	0

SAMPLE IMAGES	method	limit/base	current	history1	history2
Color					
Bottom					

## GRAPHS



**Laboratory** : WearCheck - C8-1175 Appleby Line, Burlington, ON L7L 5H9  
**Sample No.** : PP13920747  
**Lab Number** : 02602444  
**Unique Number** : 5695529  
**Test Package** : FUEL ( Additional Tests: CC Flash, GC-PercFuel, PrtCount )

**ExxonMobil Canada East Ltd.**  
 Hebron-Materials and Repair Coordin, Suite 1000, 100 New Gow  
 St. John's, NL  
 CA A1C 6K3  
 Contact: Liam Maher  
 liam.m.maher@exxonmobil.com  
 T: (709)273-3729  
 F:

To discuss this sample report, contact Customer Service at 1-800-268-2131.  
 Test denoted (\*) outside scope of accreditation, (m) method modified, (e) tested at external lab.  
 Validity of results and interpretation are based on the sample and information as supplied.