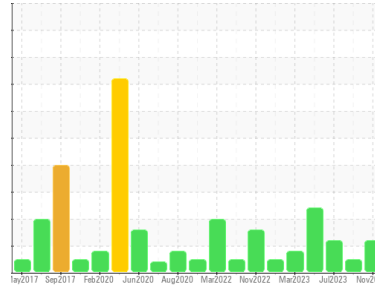




FUEL REPORT

Sample Rating Trend



ISO



Area

A22

Machine Id

ADT911230 TANK TREATED DIESEL UPPER DECK

Component

Diesel Fuel

Fluid

No.2 DIESEL FUEL (ULTRALOW SULPHUR) (418000 LTR)

DIAGNOSIS

Recommendation

Laboratory test indicate that this fuel is suitable for use and meets all test requirements. We advise that you filter this fluid before use. We recommend you service the filters on this component. Resample at the next service interval to monitor.

Corrosion

{not applicable}

Contaminants

There is a light amount of silt (particulates < 14 microns in size) present in the fuel. The water content is negligible.

Fuel Condition

All laboratory tests indicate that this sample meets specifications for No.2 ultra-low-sulfur diesel fuel (US EPA/CGSB-3.517-3 type B).

SAMPLE INFORMATION

method	limit/base	current	history1	history2
Sample Number	Client Info	PP13920747	PP13899605	PP13878485
Sample Date	Client Info	07 Nov 2023	06 Aug 2023	10 Jul 2023
Machine Age	hrs	0	0	0
Sample Status		ATTENTION	NORMAL	ABNORMAL

PHYSICAL PROPERTIES

method	limit/base	current	history1	history2		
Specific Gravity	ASTM D1298*	0.839	0.847	0.837	0.837	
Fuel Color	text	Visual Screen*	Yellow	Yellow	Yellow	
Visc @ 40°C	cSt	ASTM D7279(m)	3.0	2.8	2.8	2.7
Pensky-Martens Flash Point	°C	ASTM D7215*	52	63.6	64.7	64.6

SULFUR CONTENT

method	limit/base	current	history1	history2		
Sulfur	ppm	ASTM D5185(m)	10	9	6	6

DISTILLATION

method	limit/base	current	history1	history2		
Initial Boiling Point	°C	ASTM D2887*	165	175	176	175
5% Distillation Point	°C	ASTM D2887*		199	197	196
10% Distill Point	°C	ASTM D2887*	201	210	208	207
15% Distillation Point	°C	ASTM D2887*		219	216	216
20% Distill Point	°C	ASTM D2887*	216	227	225	224
30% Distill Point	°C	ASTM D2887*	230	241	241	239
40% Distill Point	°C	ASTM D2887*	243	254	254	253
50% Distill Point	°C	ASTM D2887*	255	266	268	266
60% Distill Point	°C	ASTM D2887*	267	279	282	280
70% Distill Point	°C	ASTM D2887*	280	293	296	294
80% Distill Point	°C	ASTM D2887*	295	308	312	309
85% Distillation Point	°C	ASTM D2887*		320	324	320
90% Distill Point	°C	ASTM D2887*	310	331	335	331
95% Distillation Point	°C	ASTM D2887*		351	354	349
Final Boiling Point	°C	ASTM D2887*	341	379	385	372

IGNITION QUALITY

method	limit/base	current	history1	history2	
API Gravity	ASTM D1298*	37.7	35	37	37
Cetane Index	ASTM D4737*	<40.0	47	51	51

CONTAMINANTS

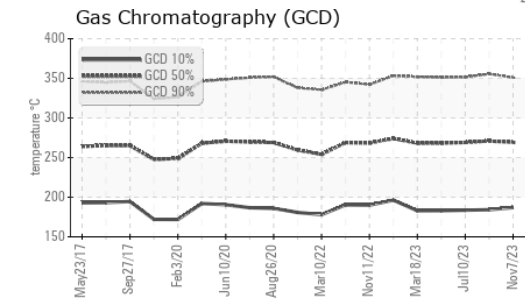
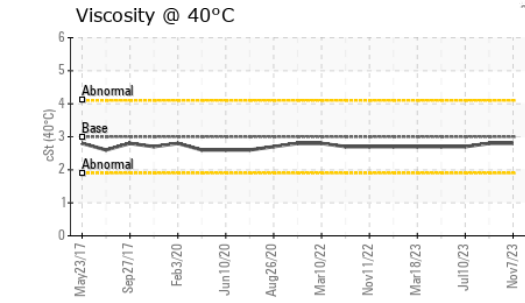
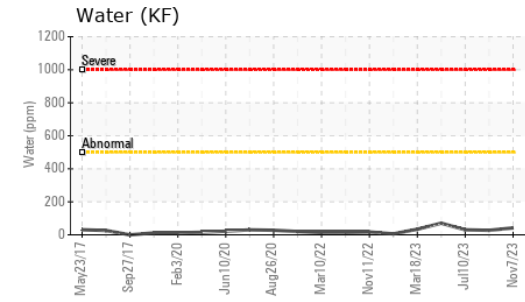
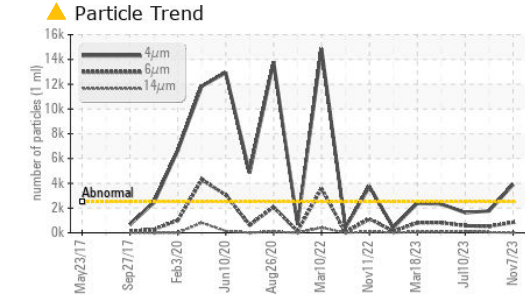
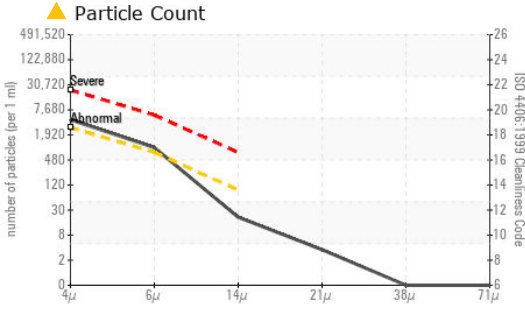
method	limit/base	current	history1	history2		
Silicon	ppm	ASTM D5185(m)	<1.0	0	0	0
Sodium	ppm	ASTM D5185(m)	<0.1	0	0	0
Potassium	ppm	ASTM D5185(m)	<0.1	<1	<1	<1
Water	%	ASTM D6304*	<0.05	0.004	0.003	0.003
ppm Water	ppm	ASTM D6304*	<500	42	27.3	30.5

FLUID CLEANLINESS

method	limit/base	current	history1	history2	
Particles >4µm	ASTM D7647	>2500	▲ 3895	1766	1632
Particles >6µm	ASTM D7647	>640	▲ 836	522	574
Particles >14µm	ASTM D7647	>80	18	49	▲ 123
Particles >21µm	ASTM D7647	>20	3	11	▲ 49
Particles >38µm	ASTM D7647	>4	0	0	2
Particles >71µm	ASTM D7647	>3	0	0	0
Oil Cleanliness	ISO 4406 (c)	>18/16/13	▲ 19/17/11	18/16/13	▲ 18/16/14

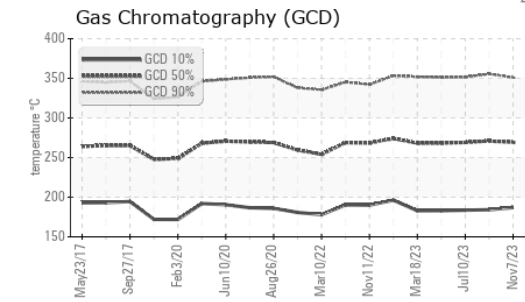
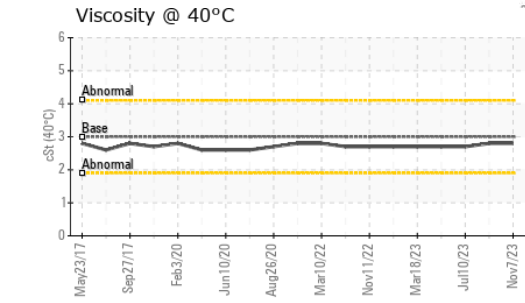
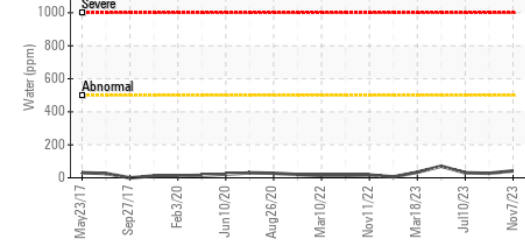
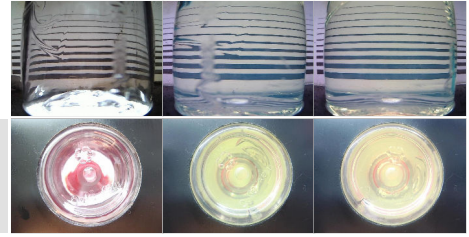


FUEL REPORT



HEAVY METALS	method	limit/base	current	history1	history2
Aluminum	ppm	ASTM D5185(m)	<0.1	0	0
Nickel	ppm	ASTM D5185(m)	<0.1	0	0
Lead	ppm	ASTM D5185(m)	<0.1	0	0
Vanadium	ppm	ASTM D5185(m)	<0.1	0	0
Iron	ppm	ASTM D5185(m)	<0.1	<1	<1
Calcium	ppm	ASTM D5185(m)	<0.1	0	0
Magnesium	ppm	ASTM D5185(m)	<0.1	0	0
Phosphorus	ppm	ASTM D5185(m)	<0.1	0	0
Zinc	ppm	ASTM D5185(m)	<0.1	0	0

SAMPLE IMAGES	method	limit/base	current	history1	history2
Color					
Bottom					



Laboratory : WearCheck - C8-1175 Appleby Line, Burlington, ON L7L 5H9
Sample No. : PP13920747
Lab Number : 02602450
Unique Number : 5695535
Test Package : FUEL (Additional Tests: CC Flash, GC-PercFuel, PrtCount)

ExxonMobil Canada East Ltd.
 Hebron-Materials and Repair Coordin, Suite 1000, 100 New Gow
 St. John's, NL
 CA A1C 6K3
 Contact: Liam Maher
 liam.m.maher@exxonmobil.com
 T: (709)273-3729
 F:

To discuss this sample report, contact Customer Service at 1-800-268-2131.
 Test denoted (*) outside scope of accreditation, (m) method modified, (e) tested at external lab.
 Validity of results and interpretation are based on the sample and information as supplied.