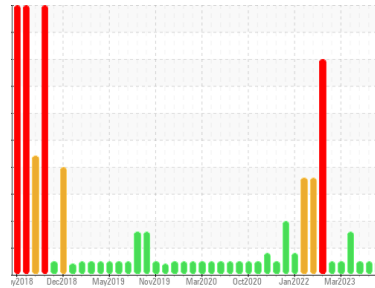




FUEL REPORT

Sample Rating Trend



NORMAL



Machine Id
TDT837271 DIESEL DAY TANK SPG4160B

Component
Diesel Fuel
Fluid

No.2 DIESEL FUEL (ULTRALOW SULPHUR) (--- GAL)

DIAGNOSIS

Recommendation

Laboratory test indicate that this fuel is suitable for use and meets all test requirements. Resample at the next service interval to monitor.

Corrosion

{not applicable}

Contaminants

The system cleanliness is acceptable for your target ISO 4406 cleanliness code. The water content is negligible. There is no indication of any contamination in the diesel fuel.

Fuel Condition

All laboratory tests indicate that this sample meets specifications for No.2 ultra-low-sulfur diesel fuel (US EPA/CGSB-3.517-3 type B).

SAMPLE INFORMATION		method	limit/base	current	history1	history2
Sample Number	Client Info			PP13920747	PP13899605	PP13878485
Sample Date	Client Info			07 Nov 2023	06 Aug 2023	10 Jul 2023
Machine Age	hrs	Client Info		0	0	0
Sample Status				NORMAL	NORMAL	NORMAL

PHYSICAL PROPERTIES		method	limit/base	current	history1	history2
Specific Gravity		ASTM D1298*	0.839	0.841	0.843	0.843
Fuel Color	text	Visual Screen*	Yellow	Yellow	Yellow	Yellow
Visc @ 40°C	cSt	ASTM D7279(m)	3.0	2.8	2.7	2.7
Pensky-Martens Flash Point	°C	ASTM D7215*	52	64.4	64.2	64.8

SULFUR CONTENT		method	limit/base	current	history1	history2
Sulfur	ppm	ASTM D5185(m)	10	8	10	9

DISTILLATION		method	limit/base	current	history1	history2
Initial Boiling Point	°C	ASTM D2887*	165	175	176	176
5% Distillation Point	°C	ASTM D2887*		197	199	200
10% Distill Point	°C	ASTM D2887*	201	208	210	211
15% Distillation Point	°C	ASTM D2887*		217	219	219
20% Distill Point	°C	ASTM D2887*	216	225	227	227
30% Distill Point	°C	ASTM D2887*	230	241	241	241
40% Distill Point	°C	ASTM D2887*	243	254	253	254
50% Distill Point	°C	ASTM D2887*	255	267	265	266
60% Distill Point	°C	ASTM D2887*	267	281	278	279
70% Distill Point	°C	ASTM D2887*	280	295	292	292
80% Distill Point	°C	ASTM D2887*	295	310	306	307
85% Distillation Point	°C	ASTM D2887*		321	317	317
90% Distill Point	°C	ASTM D2887*	310	333	327	328
95% Distillation Point	°C	ASTM D2887*		351	345	345
Final Boiling Point	°C	ASTM D2887*	341	376	363	368

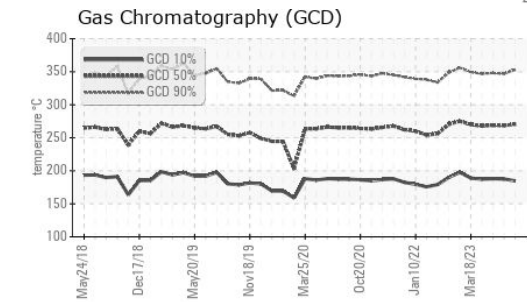
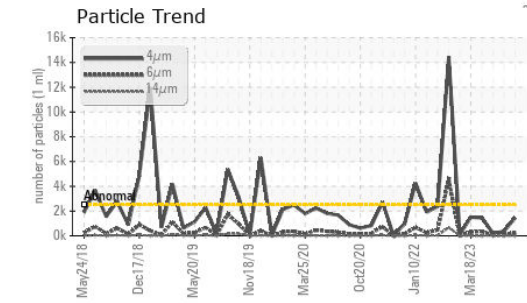
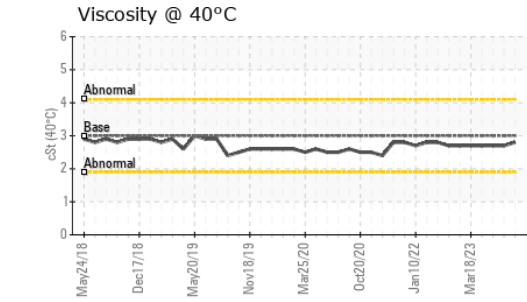
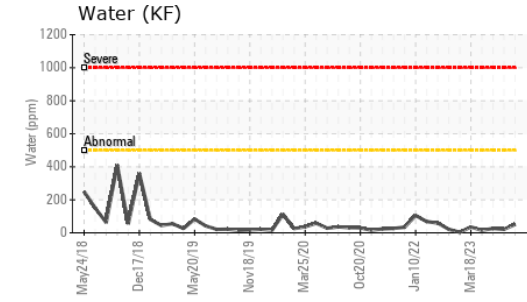
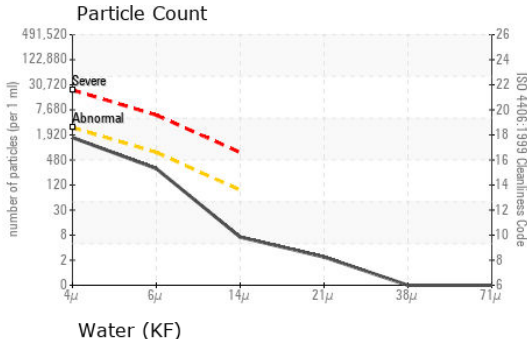
IGNITION QUALITY		method	limit/base	current	history1	history2
API Gravity		ASTM D1298*	37.7	36	36	36
Cetane Index		ASTM D4737*	<40.0	49	48	49

CONTAMINANTS		method	limit/base	current	history1	history2
Silicon	ppm	ASTM D5185(m)	<1.0	0	0	0
Sodium	ppm	ASTM D5185(m)	<0.1	0	0	0
Potassium	ppm	ASTM D5185(m)	<0.1	<1	<1	<1
Water	%	ASTM D6304*	<0.05	0.005	0.002	0.003
ppm Water	ppm	ASTM D6304*	<500	51	21.4	26.6

FLUID CLEANLINESS		method	limit/base	current	history1	history2
Particles >4µm		ASTM D7647	>2500	1454	357	218
Particles >6µm		ASTM D7647	>640	262	88	58
Particles >14µm		ASTM D7647	>80	6	8	7
Particles >21µm		ASTM D7647	>20	2	3	2
Particles >38µm		ASTM D7647	>4	0	0	0
Particles >71µm		ASTM D7647	>3	0	0	0
Oil Cleanliness		ISO 4406 (c)	>18/16/13	18/15/10	16/14/10	15/13/10



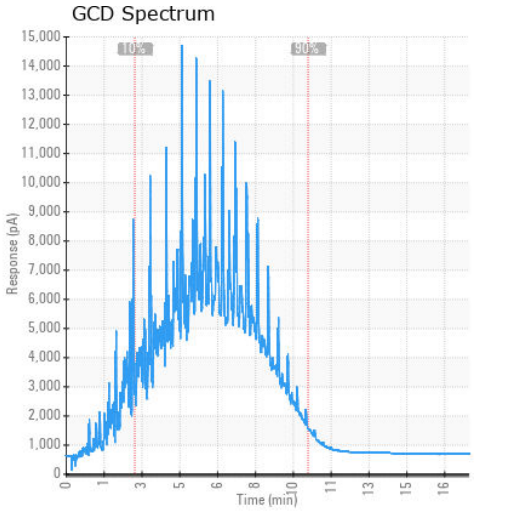
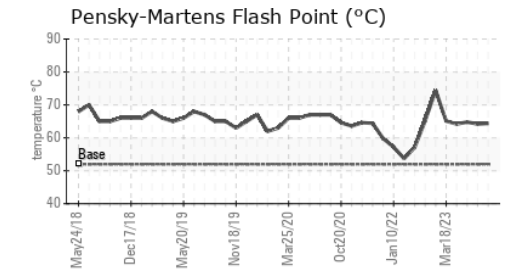
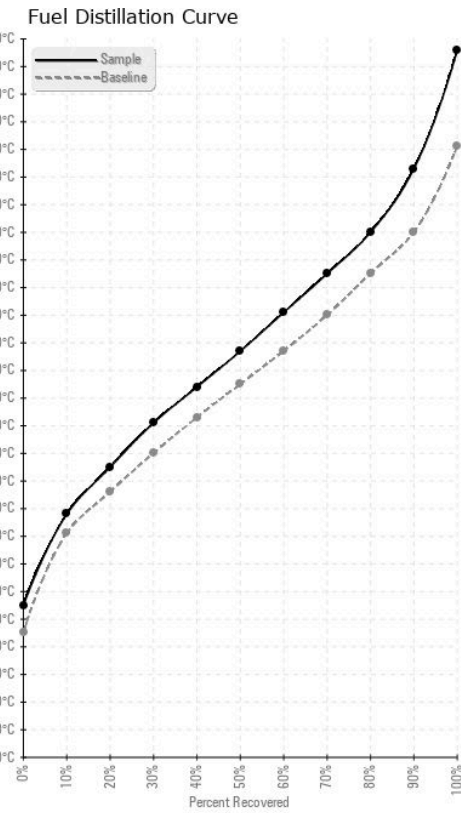
FUEL REPORT



HEAVY METALS	method	limit/base	current	history1	history2
Aluminum	ppm	ASTM D5185(m)	<0.1	0	0
Nickel	ppm	ASTM D5185(m)	<0.1	0	0
Lead	ppm	ASTM D5185(m)	<0.1	0	0
Vanadium	ppm	ASTM D5185(m)	<0.1	0	0
Iron	ppm	ASTM D5185(m)	<1	<1	<1
Calcium	ppm	ASTM D5185(m)	<0.1	<1	<1
Magnesium	ppm	ASTM D5185(m)	<0.1	0	0
Phosphorus	ppm	ASTM D5185(m)	<0.1	0	0
Zinc	ppm	ASTM D5185(m)	<0.1	0	0

SAMPLE IMAGES	method	limit/base	current	history1	history2
Color					
Bottom					

GRAPHS



Laboratory : WearCheck - C8-1175 Appleby Line, Burlington, ON L7L 5H9
Sample No. : PP13920747
Lab Number : 02602452
Unique Number : 5695537
Test Package : FUEL (Additional Tests: CC Flash, GC-PercFuel, PrtCount)

ExxonMobil Canada East Ltd.
 Hebron-Materials and Repair Coordin, Suite 1000, 100 New Gow
 St. John's, NL
 CA A1C 6K3
 Contact: Liam Maher
 liam.m.maher@exxonmobil.com
 T: (709)273-3729
 F:

To discuss this sample report, contact Customer Service at 1-800-268-2131.
 Test denoted (*) outside scope of accreditation, (m) method modified, (e) tested at external lab.
 Validity of results and interpretation are based on the sample and information as supplied.