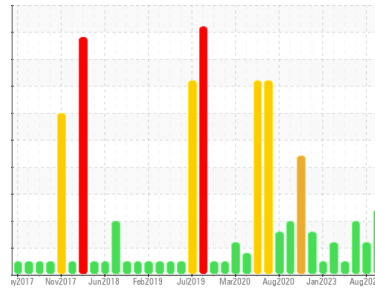




FUEL REPORT

Sample Rating Trend



ISO



Area
A21
Machine Id
ADT911215 TANK RAW DIESEL NE PEDESTAL CRANE
Component
Diesel Fuel
Fluid
No.2 DIESEL FUEL (ULTRALOW SULPHUR) (260000 LTR)

DIAGNOSIS

Recommendation

Laboratory test indicate that this fuel is suitable for use and meets all test requirements. We advise that you perform a filter service, and use off-line filtration to improve the cleanliness of the system fluid. We advise that you filter this fluid before use. We recommend an early resample to monitor this condition.

Corrosion

(not applicable)

Contaminants

There is a moderate amount of particulates (2 to 100 microns in size) present in the fuel. The water content is negligible.

Fuel Condition

The fuel is still serviceable provided that the contaminant(s) can be reduced to acceptable levels. All laboratory tests indicate that this sample meets specifications for No.2 ultra-low-sulfur diesel fuel (US EPA/CGSB-3.517-3 type B).

SAMPLE INFORMATION

method	limit/base	current	history1	history2
Sample Number	Client Info	PP13920747	PP13899605	PP13878485
Sample Date	Client Info	07 Nov 2023	06 Aug 2023	10 Jul 2023
Machine Age	hrs	0	0	0
Sample Status		ABNORMAL	ATTENTION	ABNORMAL

PHYSICAL PROPERTIES

method	limit/base	current	history1	history2		
Specific Gravity	ASTM D1298*	0.839	0.848	0.837	0.837	
Fuel Color	text	Visual Screen*	Yllow	Yllow	Yllow	Yllow
Visc @ 40°C	cSt	ASTM D7279(m)	3.0	2.7	2.6	2.7
Pensky-Martens Flash Point	°C	ASTM D7215*	52	64.7	62.4	62.4

SULFUR CONTENT

method	limit/base	current	history1	history2		
Sulfur	ppm	ASTM D5185(m)	10	8	6	7

DISTILLATION

method	limit/base	current	history1	history2		
Initial Boiling Point	°C	ASTM D2887*	165	176	173	173
5% Distillation Point	°C	ASTM D2887*		200	195	195
10% Distill Point	°C	ASTM D2887*	201	211	207	206
15% Distillation Point	°C	ASTM D2887*		219	215	215
20% Distill Point	°C	ASTM D2887*	216	227	224	223
30% Distill Point	°C	ASTM D2887*	230	240	240	239
40% Distill Point	°C	ASTM D2887*	243	252	253	252
50% Distill Point	°C	ASTM D2887*	255	264	266	265
60% Distill Point	°C	ASTM D2887*	267	277	280	279
70% Distill Point	°C	ASTM D2887*	280	290	294	294
80% Distill Point	°C	ASTM D2887*	295	305	310	309
85% Distillation Point	°C	ASTM D2887*		317	320	320
90% Distill Point	°C	ASTM D2887*	310	329	331	331
95% Distillation Point	°C	ASTM D2887*		350	349	349
Final Boiling Point	°C	ASTM D2887*	341	383	364	369

IGNITION QUALITY

method	limit/base	current	history1	history2	
API Gravity	ASTM D1298*	37.7	35	37	37
Cetane Index	ASTM D4737*	<40.0	46	51	51

CONTAMINANTS

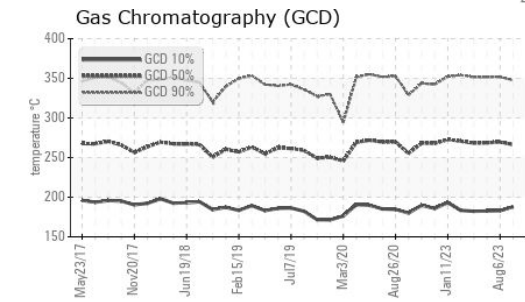
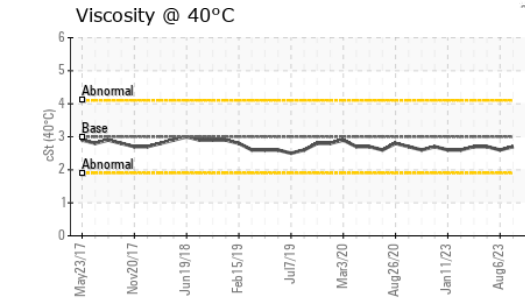
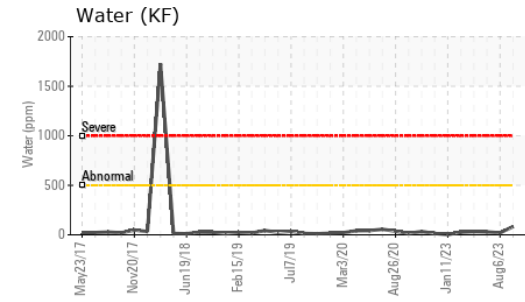
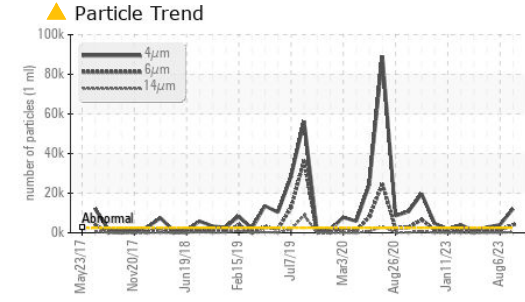
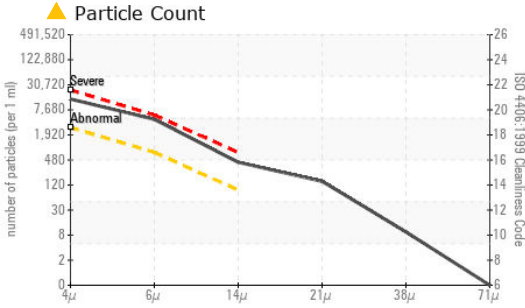
method	limit/base	current	history1	history2		
Silicon	ppm	ASTM D5185(m)	<1.0	0	0	0
Sodium	ppm	ASTM D5185(m)	<0.1	0	0	0
Potassium	ppm	ASTM D5185(m)	<0.1	<1	<1	<1
Water	%	ASTM D6304*	<0.05	0.008	0.002	0.003
ppm Water	ppm	ASTM D6304*	<500	83	20.2	29.2

FLUID CLEANLINESS

method	limit/base	current	history1	history2	
Particles >4µm	ASTM D7647	>2500	▲ 12128	▲ 4057	▲ 2875
Particles >6µm	ASTM D7647	>640	▲ 3968	▲ 1203	▲ 700
Particles >14µm	ASTM D7647	>80	▲ 372	77	▲ 114
Particles >21µm	ASTM D7647	>20	▲ 130	12	▲ 43
Particles >38µm	ASTM D7647	>4	▲ 8	0	3
Particles >71µm	ASTM D7647	>3	0	0	0
Oil Cleanliness	ISO 4406 (c)	>18/16/13	▲ 21/19/16	▲ 19/17/13	▲ 19/17/14

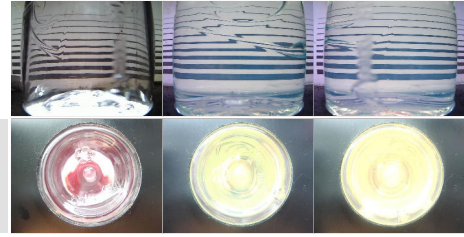


FUEL REPORT

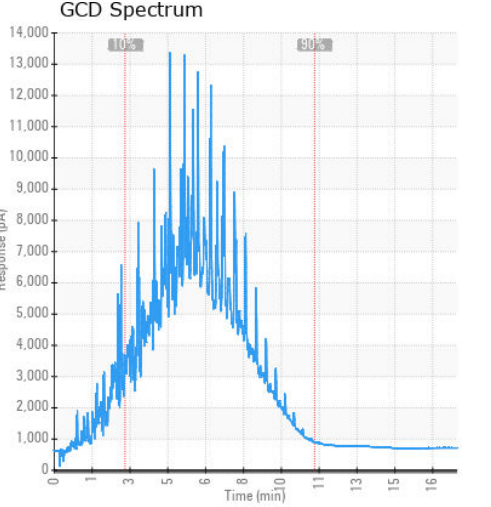
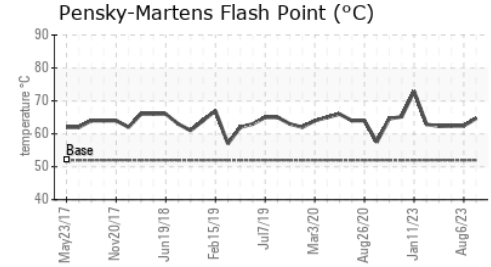
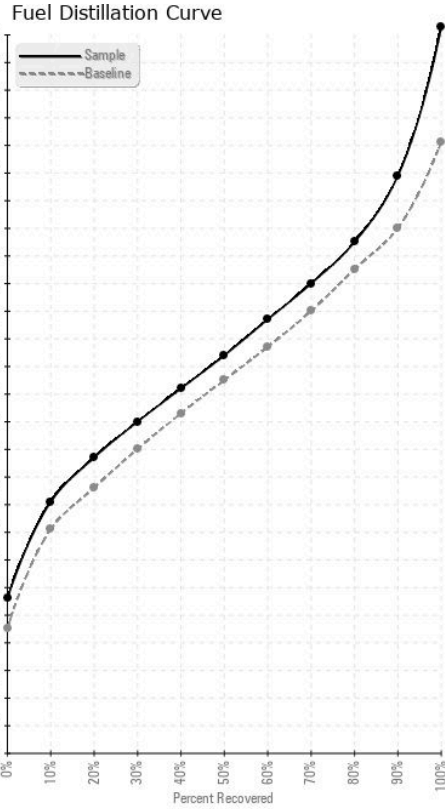


HEAVY METALS	method	limit/base	current	history1	history2
Aluminum	ppm	ASTM D5185(m)	<0.1	0	0
Nickel	ppm	ASTM D5185(m)	<0.1	0	0
Lead	ppm	ASTM D5185(m)	<0.1	0	0
Vanadium	ppm	ASTM D5185(m)	<0.1	0	0
Iron	ppm	ASTM D5185(m)	<0.1	<1	<1
Calcium	ppm	ASTM D5185(m)	<0.1	0	0
Magnesium	ppm	ASTM D5185(m)	<0.1	0	0
Phosphorus	ppm	ASTM D5185(m)	<0.1	0	0
Zinc	ppm	ASTM D5185(m)	<0.1	0	0

SAMPLE IMAGES	method	limit/base	current	history1	history2
Color					
Bottom					



GRAPHS



Laboratory : WearCheck - C8-1175 Appleby Line, Burlington, ON L7L 5H9
Sample No. : PP13920747
Lab Number : 02602453
Unique Number : 5695538
Test Package : FUEL (Additional Tests: CC Flash, GC-PercFuel, PrtCount)

ExxonMobil Canada East Ltd.
 Hebron-Materials and Repair Coordin, Suite 1000, 100 New Gow
 St. John's, NL
 CA A1C 6K3
 Contact: Liam Maher
 liam.m.maher@exxonmobil.com
 T: (709)273-3729
 F:

To discuss this sample report, contact Customer Service at 1-800-268-2131.
 Test denoted (*) outside scope of accreditation, (m) method modified, (e) tested at external lab.
 Validity of results and interpretation are based on the sample and information as supplied.