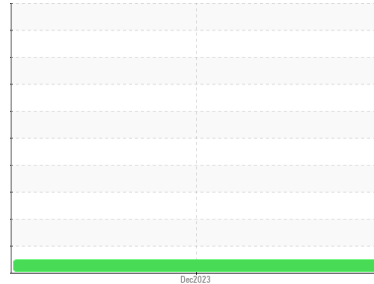


Area  
**IH FERNIE [180016794]**  
Machine Id  
**DETROIT K6606695**

Component  
**Diesel Fuel**  
Fluid

**No.2 DIESEL FUEL (ULTRALOW SULPHUR) (--- GAL)**



**DIAGNOSIS**

**Recommendation**

Please contact your representative for information regarding the proper sampling kits for your service.

**Corrosion**

{not applicable}

**Contaminants**

There is no indication of any contamination in the component(unconfirmed).

**Fuel Condition**

Not enough sample submitted to determine fuel condition and/or classification.

SAMPLE INFORMATION		method	limit/base	current	history1	history2
Sample Number	Client Info			<b>VPA060338</b>	---	---
Sample Date	Client Info			<b>08 Dec 2023</b>	---	---
Machine Age	hrs	Client Info		<b>512</b>	---	---
Sample Status				<b>NORMAL</b>	---	---

**PHYSICAL PROPERTIES**

method	limit/base	current	history1	history2		
Visc @ 40°C	cSt	ASTM D7279(m)	3.0	<b>2.4</b>	---	---

**SULFUR CONTENT**

method	limit/base	current	history1	history2		
Sulfur	ppm	ASTM D5185(m)	10	<b>6</b>	---	---

**CONTAMINANTS**

method	limit/base	current	history1	history2		
Silicon	ppm	ASTM D5185(m)	<1.0	<b>0</b>	---	---
Sodium	ppm	ASTM D5185(m)	<0.1	<b>0</b>	---	---
Potassium	ppm	ASTM D5185(m)	<0.1	<b>2</b>	---	---

**HEAVY METALS**

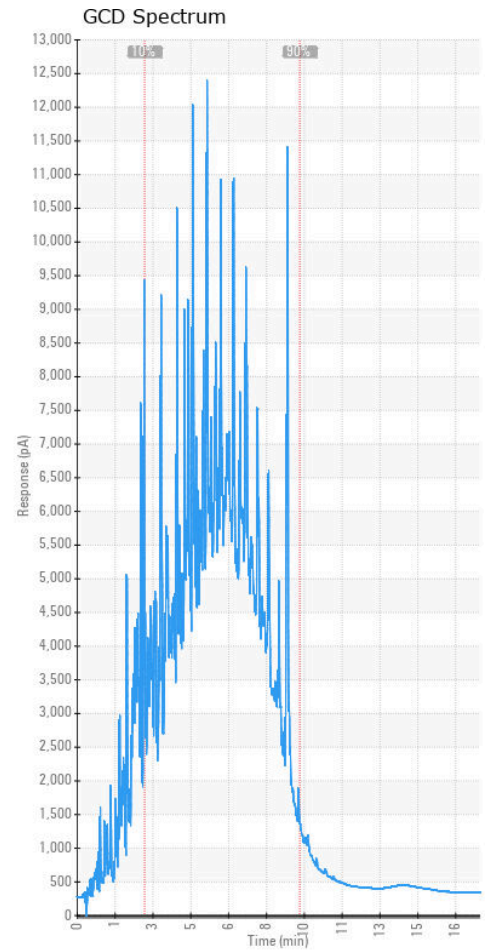
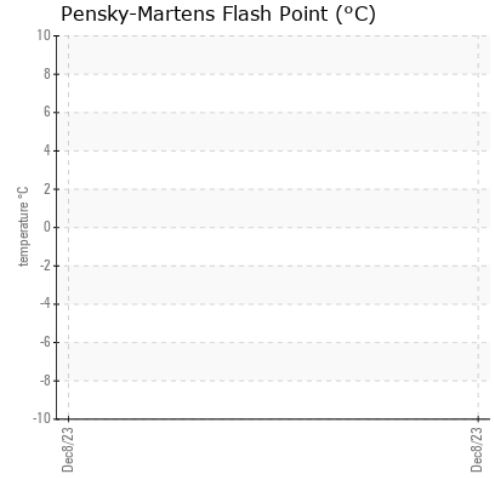
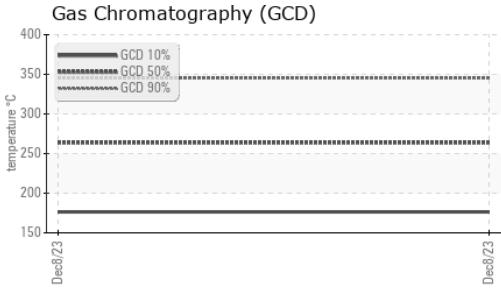
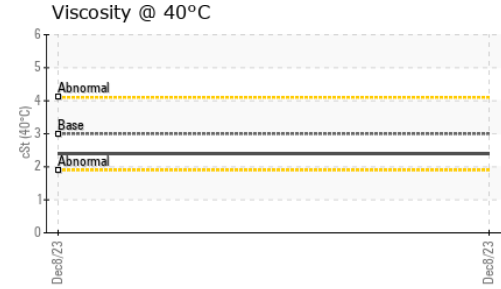
method	limit/base	current	history1	history2		
Aluminum	ppm	ASTM D5185(m)	<0.1	<b>0</b>	---	---
Nickel	ppm	ASTM D5185(m)	<0.1	<b>0</b>	---	---
Lead	ppm	ASTM D5185(m)	<0.1	<b>0</b>	---	---
Vanadium	ppm	ASTM D5185(m)	<0.1	<b>0</b>	---	---
Iron	ppm	ASTM D5185(m)	<0.1	<b>&lt;1</b>	---	---
Calcium	ppm	ASTM D5185(m)	<0.1	<b>&lt;1</b>	---	---
Magnesium	ppm	ASTM D5185(m)	<0.1	<b>&lt;1</b>	---	---
Phosphorus	ppm	ASTM D5185(m)	<0.1	<b>&lt;1</b>	---	---
Zinc	ppm	ASTM D5185(m)	<0.1	<b>0</b>	---	---

**SAMPLE IMAGES**

method	limit/base	current	history1	history2	
Color				no image	no image
Bottom				no image	no image

## FUEL REPORT

### GRAPHS



**Laboratory** : WearCheck - C8-1175 Appleby Line, Burlington, ON L7L 5H9  
**Sample No.** : VPA060338  
**Lab Number** : 02603640  
**Unique Number** : 5696725  
**Test Package** : MOB 1 ( Additional Tests: GC-PercFuel, GCD )

**CULLEN DIESEL POWER - 695335**  
 9300 192 ST  
 SURREY, BC  
 CA V4N 3R8  
 Contact: Shane  
 sdf@cullendiesel.com  
 T: (250)427-8271  
 F:

To discuss this sample report, contact Customer Service at 1-800-268-2131.  
 Test denoted (\*) outside scope of accreditation, (m) method modified, (e) tested at external lab.  
 Validity of results and interpretation are based on the sample and information as supplied.