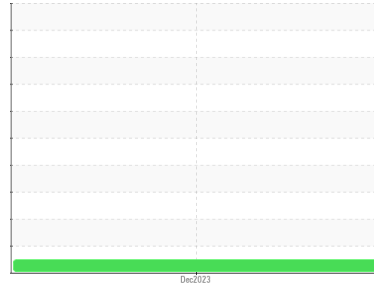


Area  
**INTERIOR HEALTH [180016289]**  
Machine Id  
**MTU 95130500168**  
Component  
**Diesel Fuel**  
Fluid  
**No.2 DIESEL FUEL (ULTRALOW SULPHUR) (--- GAL)**



**DIAGNOSIS**

**Recommendation**  
Please contact your representative for information regarding the proper sampling kits for your service.

**Corrosion**  
{not applicable}

**Contaminants**  
There is no indication of any contamination in the component(unconfirmed).

**Fuel Condition**  
Not enough sample submitted to determine fuel condition and/or classification.

SAMPLE INFORMATION		method	limit/base	current	history1	history2
Sample Number	Client Info			<b>VPA060340</b>	---	---
Sample Date	Client Info			<b>01 Dec 2023</b>	---	---
Machine Age	hrs	Client Info		<b>112</b>	---	---
Sample Status				<b>NORMAL</b>	---	---

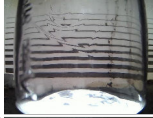

PHYSICAL PROPERTIES		method	limit/base	current	history1	history2
Visc @ 40°C	cSt	ASTM D7279(m)	3.0	<b>2.2</b>	---	---

SULFUR CONTENT		method	limit/base	current	history1	history2
Sulfur	ppm	ASTM D5185(m)	10	<b>5</b>	---	---

CONTAMINANTS		method	limit/base	current	history1	history2
Silicon	ppm	ASTM D5185(m)	<1.0	<b>0</b>	---	---
Sodium	ppm	ASTM D5185(m)	<0.1	<b>0</b>	---	---
Potassium	ppm	ASTM D5185(m)	<0.1	<b>2</b>	---	---

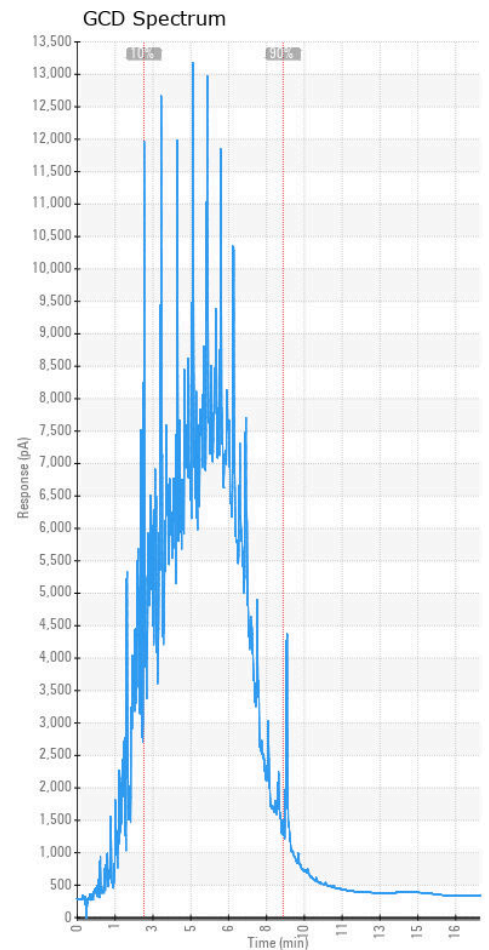
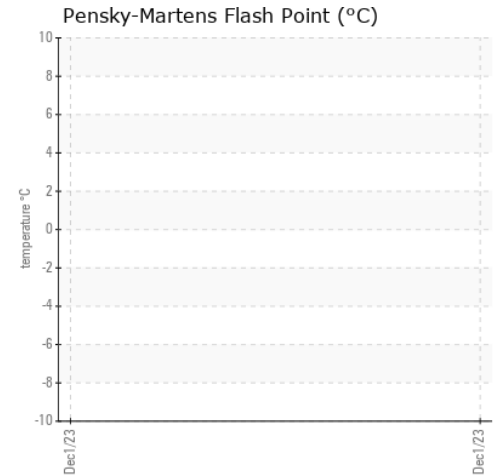
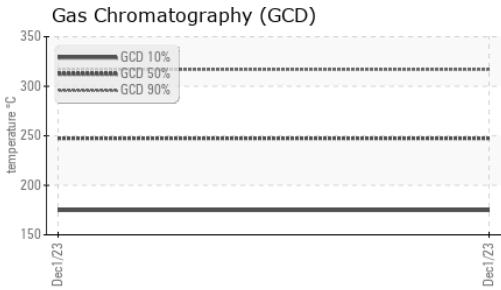
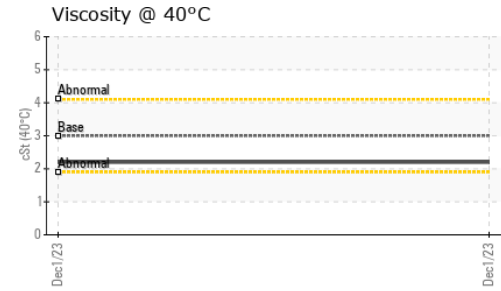
HEAVY METALS		method	limit/base	current	history1	history2
Aluminum	ppm	ASTM D5185(m)	<0.1	<b>0</b>	---	---
Nickel	ppm	ASTM D5185(m)	<0.1	<b>0</b>	---	---
Lead	ppm	ASTM D5185(m)	<0.1	<b>0</b>	---	---
Vanadium	ppm	ASTM D5185(m)	<0.1	<b>0</b>	---	---
Iron	ppm	ASTM D5185(m)	<0.1	<b>&lt;1</b>	---	---
Calcium	ppm	ASTM D5185(m)	<0.1	<b>&lt;1</b>	---	---
Magnesium	ppm	ASTM D5185(m)	<0.1	<b>&lt;1</b>	---	---
Phosphorus	ppm	ASTM D5185(m)	<0.1	<b>&lt;1</b>	---	---
Zinc	ppm	ASTM D5185(m)	<0.1	<b>&lt;1</b>	---	---

**SAMPLE IMAGES**

SAMPLE IMAGES		method	limit/base	current	history1	history2
Color					no image	no image
Bottom					no image	no image

**FUEL REPORT**

**GRAPHS**



**Laboratory** : WearCheck - C8-1175 Appleby Line, Burlington, ON L7L 5H9  
**Sample No.** : VPA060340  
**Lab Number** : 02603644  
**Unique Number** : 5696729  
**Test Package** : MOB 1 ( Additional Tests: GC-PercFuel, GCD )

**CULLEN DIESEL POWER - 695335**  
 9300 192 ST  
 SURREY, BC  
 CA V4N 3R8  
 Contact: Shane  
 sdf@cullendiesel.com  
 T: (250)427-8271  
 F:

To discuss this sample report, contact Customer Service at 1-800-268-2131.  
 Test denoted (\*) outside scope of accreditation, (m) method modified, (e) tested at external lab.  
 Validity of results and interpretation are based on the sample and information as supplied.