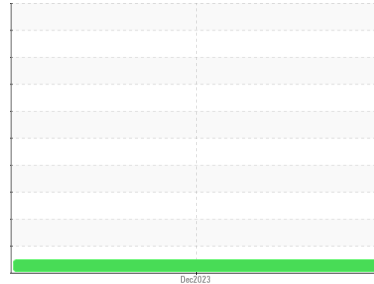


Area
INTERIOR HEALTH SPARWOOD [180016793]
Machine Id
CUMMINS J910428448
Component
Diesel Fuel
Fluid
No.2 DIESEL FUEL (LOW-SULPHUR) (--- GAL)



DIAGNOSIS

Recommendation

Please contact your representative for information regarding the proper sampling kits for your service.

Corrosion

{not applicable}

Contaminants

There is no indication of any contamination in the component(unconfirmed).

Fuel Condition

Not enough sample submitted to determine fuel condition and/or classification.

SAMPLE INFORMATION		method	limit/base	current	history1	history2
Sample Number	Client Info			VPA060342	---	---
Sample Date	Client Info			07 Dec 2023	---	---
Machine Age	hrs	Client Info		512	---	---
Sample Status				NORMAL	---	---

PHYSICAL PROPERTIES

PHYSICAL PROPERTIES		method	limit/base	current	history1	history2
Visc @ 40°C	cSt	ASTM D7279(m)	3.0	2.3	---	---

SULFUR CONTENT

SULFUR CONTENT		method	limit/base	current	history1	history2
Sulfur	ppm	ASTM D5185(m)	250	31	---	---

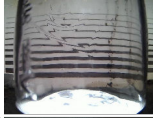

CONTAMINANTS

CONTAMINANTS		method	limit/base	current	history1	history2
Silicon	ppm	ASTM D5185(m)	<1.0	0	---	---
Sodium	ppm	ASTM D5185(m)	<0.1	0	---	---
Potassium	ppm	ASTM D5185(m)	<0.1	2	---	---

HEAVY METALS

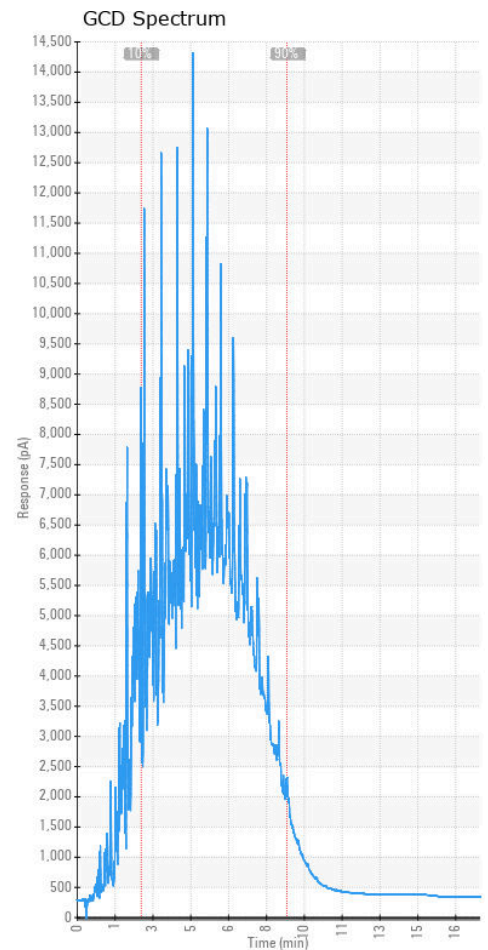
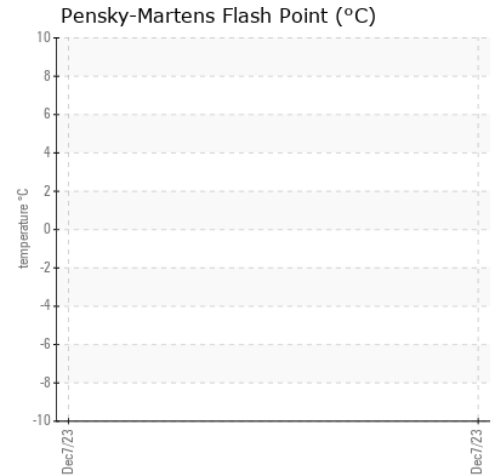
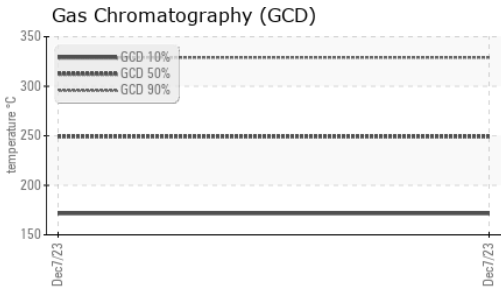
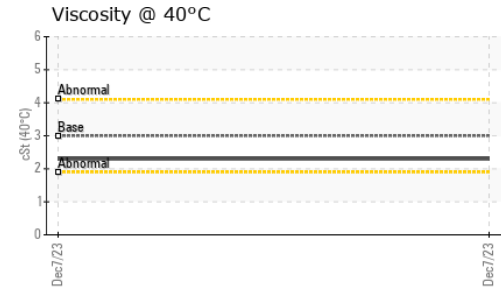
HEAVY METALS		method	limit/base	current	history1	history2
Aluminum	ppm	ASTM D5185(m)	<0.1	0	---	---
Nickel	ppm	ASTM D5185(m)	<0.1	0	---	---
Lead	ppm	ASTM D5185(m)	<0.1	0	---	---
Vanadium	ppm	ASTM D5185(m)	<0.1	0	---	---
Iron	ppm	ASTM D5185(m)	<0.1	<1	---	---
Calcium	ppm	ASTM D5185(m)	<0.1	0	---	---
Magnesium	ppm	ASTM D5185(m)	<0.1	<1	---	---
Phosphorus	ppm	ASTM D5185(m)	<0.1	<1	---	---
Zinc	ppm	ASTM D5185(m)	<0.1	0	---	---

SAMPLE IMAGES

SAMPLE IMAGES		method	limit/base	current	history1	history2
Color					no image	no image
Bottom					no image	no image

FUEL REPORT

GRAPHS



Laboratory : WearCheck - C8-1175 Appleby Line, Burlington, ON L7L 5H9
Sample No. : VPA060342
Lab Number : 02603645
Unique Number : 5696730
Test Package : MOB 1 (Additional Tests: GC-PercFuel, GCD)

CULLEN DIESEL POWER - 695335
 9300 192 ST
 SURREY, BC
 CA V4N 3R8
 Contact: Shane
 sdf@cullendiesel.com
 T: (250)427-8271
 F:

*To discuss this sample report, contact Customer Service at 1-800-268-2131.
 Test denoted (*) outside scope of accreditation, (m) method modified, (e) tested at external lab.
 Validity of results and interpretation are based on the sample and information as supplied.*