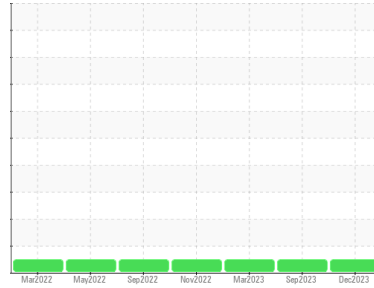




# GREASE ANALYSIS

Sample Rating Trend

**NORMAL**



Area  
**WEST CRANE**  
 Machine Id  
**170832 GREASE 0 NORTH**  
 Component  
**Grease**  
 Fluid  
**IRVING LUBEX SYN 2 46 (--- GAL)**

## DIAGNOSIS

### Recommendation

Resample at the next service interval to monitor.

### Wear

All component wear rates are normal.

### Grease Condition

The condition of the grease is acceptable for the time in service.

### Contaminants

There is no indication of any contamination in the grease.

SAMPLE INFORMATION		method	limit/base	current	history1	history2
Sample Number	Client Info			<b>PP</b>	PP	PP
Sample Date	Client Info			<b>10 Dec 2023</b>	10 Sep 2023	07 Mar 2023
Machine Age	hrs	Client Info		<b>0</b>	0	0
Grease Age	hrs	Client Info		<b>0</b>	0	0
Grease Serviced	Client Info			<b>N/A</b>	N/A	N/A
Sample Status				<b>NORMAL</b>	NORMAL	NORMAL

CONTAMINATION		method	limit/base	current	history1	history2
Water	WC Method		>0.1	<b>NEG</b>	NEG	NEG

WEAR METALS		method	limit/base	current	history1	history2
PQ		ASTM D8184*	>200	<b>620</b>	170	250
Iron	ppm	ASTM D5185(m)	>250	<b>32</b>	20	15
Chromium	ppm	ASTM D5185(m)	>10	<b>&lt;1</b>	<1	0
Nickel	ppm	ASTM D5185(m)	>5	<b>&lt;1</b>	<1	<1
Cadmium	ppm	ASTM D5185(m)		<b>0</b>	<1	0
Titanium	ppm	ASTM D5185(m)		<b>0</b>	<1	<1
Vanadium	ppm	ASTM D5185(m)		<b>0</b>	0	0
Lead	ppm	ASTM D5185(m)	>25	<b>&lt;1</b>	0	<1
Copper	ppm	ASTM D5185(m)	>75	<b>&lt;1</b>	<1	0
Tin	ppm	ASTM D5185(m)	>5	<b>0</b>	0	0
Silver	ppm	ASTM D5185(m)	>5	<b>&lt;1</b>	<1	0

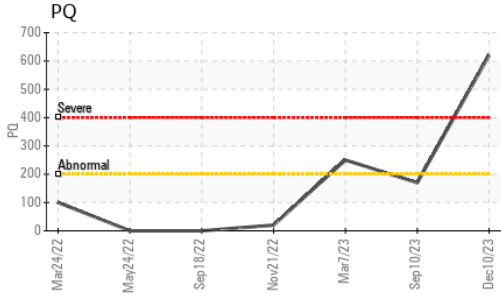
ADDITIVES		method	limit/base	current	history1	history2
Boron	ppm	ASTM D5185(m)		<b>11</b>	8	7
Magnesium	ppm	ASTM D5185(m)		<b>16</b>	15	11
Manganese	ppm	ASTM D5185(m)		<b>0</b>	<1	<1
Molybdenum	ppm	ASTM D5185(m)		<b>0</b>	0	0
Phosphorus	ppm	ASTM D5185(m)		<b>155</b>	143	131
Zinc	ppm	ASTM D5185(m)		<b>208</b>	184	172
Antimony	ppm	ASTM D5185(m)		<b>0</b>	0	0

THICKENER/SOAP		method	limit/base	current	history1	history2
Aluminum	ppm	ASTM D5185(m)		<b>5</b>	4	5
Barium	ppm	ASTM D5185(m)		<b>&lt;1</b>	<1	<1
Calcium	ppm	ASTM D5185(m)		<b>3042</b>	2383	2011
Sodium	ppm	ASTM D5185(m)		<b>31</b>	21	19
Lithium	ppm	ASTM D5185(m)		<b>155</b>	120	139
Sulfur	ppm	ASTM D5185(m)		<b>923</b>	858	970

CONTAMINANTS		method	limit/base	current	history1	history2
Silicon	ppm	ASTM D5185(m)	>150	<b>8</b>	7	9
Potassium	ppm	ASTM D5185(m)		<b>&lt;1</b>	1	<1

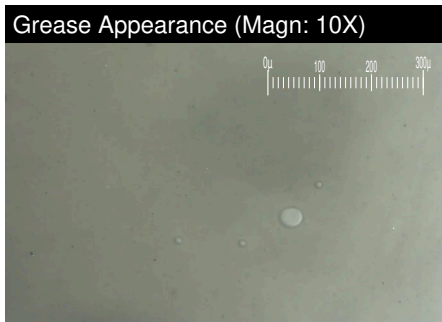
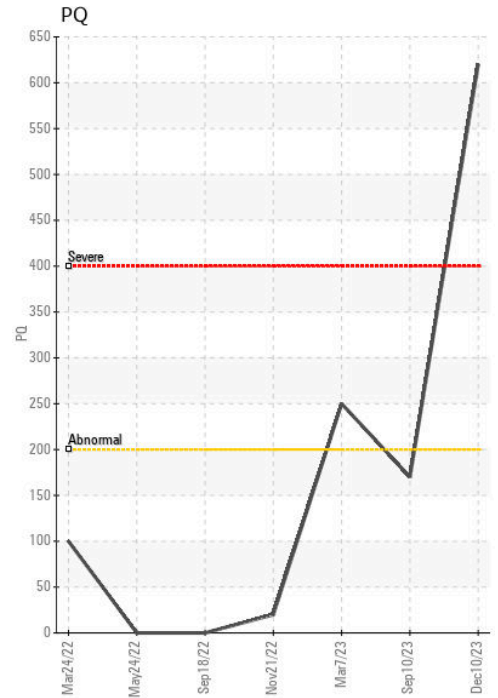
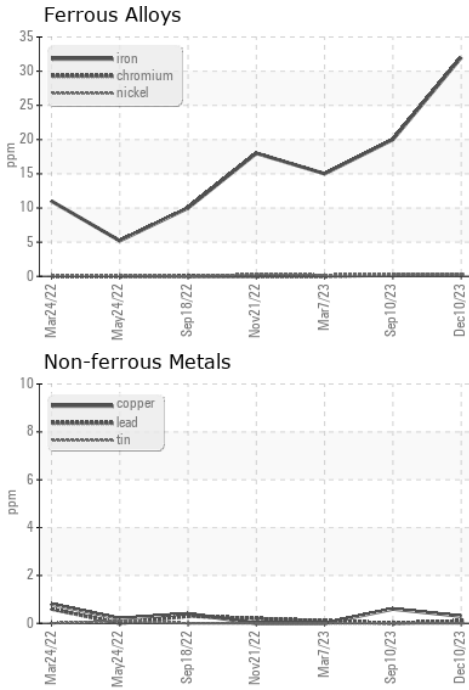
GREASE CONDITION		method	limit/base	current	history1	history2
Grease Color	Visual*	Tan/Beige		<b>Tan</b>	Grey	Grey
Texture	In-house*			<b>Buttery</b>	Buttery	Buttery
NLGI Consistency	NLGI Scale	SKF Method*	2	<b>2</b>	2	1-2

# GREASE ANALYSIS



SAMPLE IMAGES	method	limit/base	current	history1	history2
Color					
Bottom					
PrtFilter					

## GRAPHS



**Laboratory** : WearCheck - C8-1175 Appleby Line, Burlington, ON L7L 5H9 **HIBERNIA MGMT & DEVELOPMENT CO. LTD**  
**Sample No.** : PP **Received** : 15 Dec 2023 **SUITE 1000,, 100 NEW GOWER STREET**  
**Lab Number** : 02603666 **Diagnosed** : 19 Dec 2023 **ST.JOHN'S, NL**  
**Unique Number** : 5696751 **Diagnostician** : Bill Quesnel **CA A1C 6K3**  
**Test Package** : GRS 1 ( Additional Tests: BottomAnalysis ) **Contact: Sam Nash**  
samantha.m.nash@exxonmobil.com

To discuss this sample report, contact Customer Service at 1-800-268-2131.  
 Test denoted (\*) outside scope of accreditation, (m) method modified, (e) tested at external lab.  
 Validity of results and interpretation are based on the sample and information as supplied.

**T:**  
**F: (709)722-3766**