



FILTER DEBRIS ANALYSIS

Sample Rating Trend

NORMAL



Area
T.A.P
 Machine Id
52-2401-01

Component
1 Filter
 Fluid
{not provided} (245 LTR)

DIAGNOSIS

Recommendation

Échantillonner de nouveau l'équipement au prochain intervalle de vidange afin d'en surveiller la condition. (Customer Sample Comment: Filtre 1)

Wear Particles

La filtre n'avait aucune particule appréciable d'usure. Tous les indications d'usure dans la filtre sont normales.

Contaminants

Le filtre ne contenait que des niveaux normaux de contaminants et débris. Tous les niveaux des contaminants sont normaux

SAMPLE INFORMATION

method	limit/base	current	history1	history2
Sample Number	Client Info	WC0461581	---	---
Sample Date	Client Info	14 Dec 2023	---	---
Machine Age	hrs Client Info	15	---	---
Oil Age	hrs Client Info	15	---	---
Oil Changed	Client Info	N/A	---	---
Sample Status		NORMAL	---	---

CONTAMINATION

method	limit/base	current	history1	history2
Water	WC Method	NEG	---	---

FILTER WEAR PARTICLES

method	limit/base	current	history1	history2
Ferrous Rubbing	Scale 0-10 ASTM D7684*	1		
Ferrous Sliding	Scale 0-10 ASTM D7684*			
Ferrous Cutting	Scale 0-10 ASTM D7684*			
Ferrous Rolling	Scale 0-10 ASTM D7684*	1		
Ferrous Break-in	Scale 0-10 ASTM D7684*			
Ferrous Spheres	Scale 0-10 ASTM D7684*			
Ferrous Black Oxides	Scale 0-10 ASTM D7684*			
Ferrous Red Oxides	Scale 0-10 ASTM D7684*			
Ferrous Corrosive	Scale 0-10 ASTM D7684*			
Ferrous Other	Scale 0-10 ASTM D7684*			
Nonferrous Rubbing	Scale 0-10 ASTM D7684*			
Nonferrous Sliding	Scale 0-10 ASTM D7684*			
Nonferrous Cutting	Scale 0-10 ASTM D7684*			
Nonferrous Rolling	Scale 0-10 ASTM D7684*	1		
Nonferrous Other	Scale 0-10 ASTM D7684*			

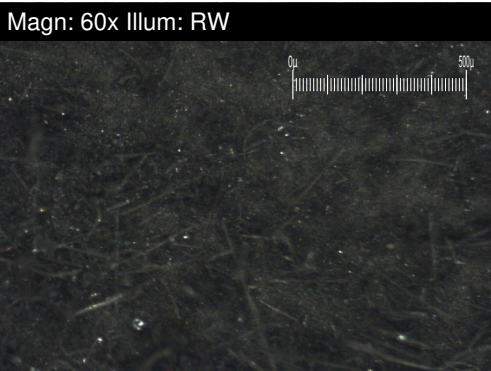
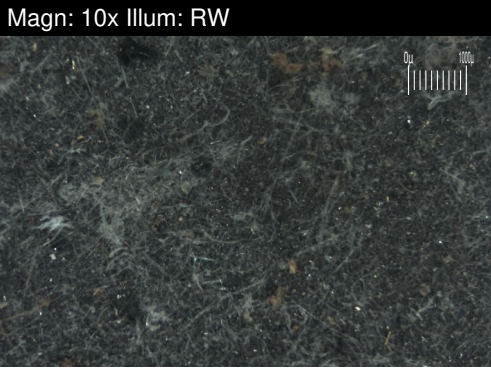
FILTER CONTAMINANTS

method	limit/base	current	history1	history2
Sand/Dirt	Scale 0-10 ASTM D7684*	1		
Fibres	Scale 0-10 ASTM D7684*	1		
Spheres	Scale 0-10 ASTM D7684*			
Other	Scale 0-10 ASTM D7684*	1		
Patch Weight	mg ASTM D7684*	57	---	---

SAMPLE IMAGES

method	limit/base	current	history1	history2
Color			<i>no image</i>	<i>no image</i>
Bottom			<i>no image</i>	<i>no image</i>

Area
T.A.P
Machine Id
52-2401-01
Component
1 Filter
Fluid
{not provided} (245 LTR)



WEAR

La filtre n'avait aucune particule appréciable d'usure. Tous les indications d'usure dans la filtre sont normales.