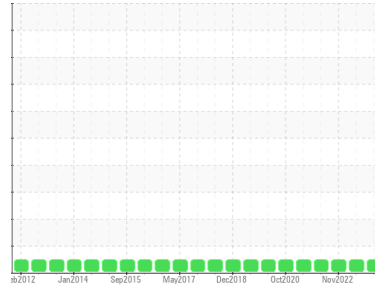




# OIL ANALYSIS REPORT

Sample Rating Trend

**NORMAL**



Area

**scellement**

Machine Id

**55-1004-02 TR Pont**

Component

**Reduction Gear**

Fluid

**MOBIL MOBILGEAR SHC 220 (--- LTR)**

## DIAGNOSIS

### Recommendation

Échantillonner de nouveau l'équipement au prochain intervalle de vidange afin d'en surveiller la condition. À NOTER: S.V.P. inclure, avec le prochain échantillon, des détails de la capacité du réservoir et le type et le degré de filtration.

### Wear

Les taux d'usure de tous les composants sont normaux.

### Contamination

Il n'y a aucun indice de contamination dans l'huile.

### Fluid Condition

L'état de l'huile est acceptable pour la durée de service.

SAMPLE INFORMATION		method	limit/base	current	history1	history2
Sample Number	Client Info			<b>WC0884592</b>	WC0833051	WC0756909
Sample Date	Client Info			<b>13 Dec 2023</b>	02 Aug 2023	09 Nov 2022
Machine Age	hrs	Client Info		<b>0</b>	0	0
Oil Age	hrs	Client Info		<b>0</b>	0	0
Oil Changed	Client Info			<b>N/A</b>	N/A	N/A
Sample Status				<b>NORMAL</b>	NORMAL	NORMAL

CONTAMINATION		method	limit/base	current	history1	history2
Water	WC Method		>0.1	<b>NEG</b>	NEG	NEG

WEAR METALS		method	limit/base	current	history1	history2
Iron	ppm	ASTM D5185(m)	>117	<b>7</b>	7	6
Chromium	ppm	ASTM D5185(m)	>2	<b>0</b>	0	0
Nickel	ppm	ASTM D5185(m)	>2	<b>&lt;1</b>	<1	0
Titanium	ppm	ASTM D5185(m)		<b>0</b>	0	0
Silver	ppm	ASTM D5185(m)		<b>&lt;1</b>	0	0
Aluminum	ppm	ASTM D5185(m)	>11	<b>&lt;1</b>	<1	<1
Lead	ppm	ASTM D5185(m)	>10	<b>&lt;1</b>	0	0
Copper	ppm	ASTM D5185(m)	>55	<b>&lt;1</b>	<1	0
Tin	ppm	ASTM D5185(m)	>15	<b>0</b>	0	0
Antimony	ppm	ASTM D5185(m)	>5	<b>0</b>	0	0
Vanadium	ppm	ASTM D5185(m)		<b>0</b>	0	0
Beryllium	ppm	ASTM D5185(m)		<b>0</b>	0	0
Cadmium	ppm	ASTM D5185(m)		<b>0</b>	0	0

ADDITIVES		method	limit/base	current	history1	history2
Boron	ppm	ASTM D5185(m)		<b>18</b>	17	18
Barium	ppm	ASTM D5185(m)		<b>&lt;1</b>	0	0
Molybdenum	ppm	ASTM D5185(m)		<b>0</b>	0	0
Manganese	ppm	ASTM D5185(m)		<b>0</b>	<1	<1
Magnesium	ppm	ASTM D5185(m)		<b>1</b>	2	<1
Calcium	ppm	ASTM D5185(m)		<b>11</b>	10	10
Phosphorus	ppm	ASTM D5185(m)		<b>367</b>	378	399
Zinc	ppm	ASTM D5185(m)		<b>6</b>	7	4
Sulfur	ppm	ASTM D5185(m)		<b>6344</b>	6123	6585
Lithium	ppm	ASTM D5185(m)		<b>&lt;1</b>	<1	<1

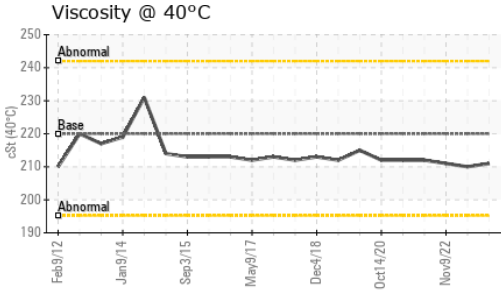
CONTAMINANTS		method	limit/base	current	history1	history2
Silicon	ppm	ASTM D5185(m)	>50	<b>8</b>	7	8
Sodium	ppm	ASTM D5185(m)		<b>&lt;1</b>	<1	<1
Potassium	ppm	ASTM D5185(m)	>20	<b>0</b>	<1	0

INFRA-RED		method	limit/base	current	history1	history2
Soot %	%	ASTM D7844*		<b>0</b>	0	0
Nitration	Abs/cm	ASTM D7624*		<b>2.4</b>	2.6	3.2
Sulfation	Abs/.1mm	ASTM D7415*		<b>34.1</b>	34.7	28.6

FLUID DEGRADATION		method	limit/base	current	history1	history2
Oxidation	Abs/.1mm	ASTM D7414*		<b>37.2</b>	37.1	24.9



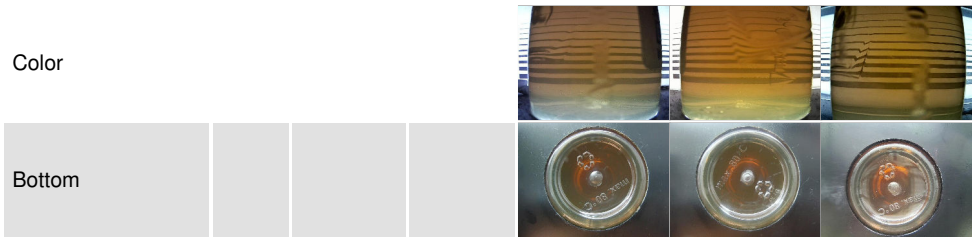
# OIL ANALYSIS REPORT



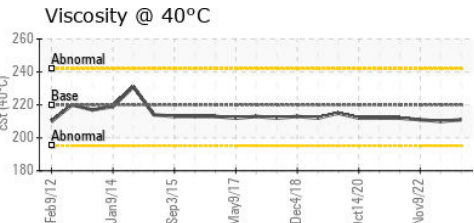
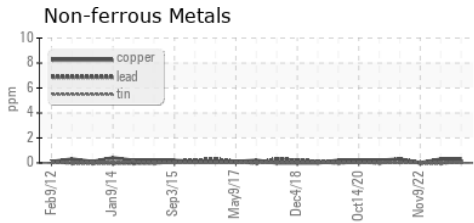
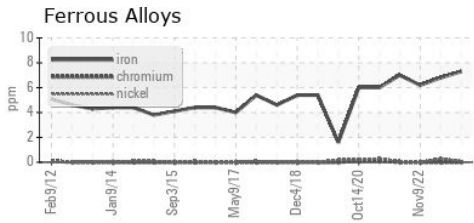
VISUAL	method	limit/base	current	history1	history2
White Metal	scalar	Visual*	NONE	NONE	NONE
Yellow Metal	scalar	Visual*	NONE	NONE	NONE
Precipitate	scalar	Visual*	NONE	NONE	NONE
Silt	scalar	Visual*	NONE	NONE	NONE
Debris	scalar	Visual*	NONE	NONE	NONE
Sand/Dirt	scalar	Visual*	NONE	NONE	NONE
Appearance	scalar	Visual*	NORML	NORML	NORML
Odor	scalar	Visual*	NORML	NORML	NORML
Emulsified Water	scalar	Visual*	>0.1	NEG	NEG
Free Water	scalar	Visual*		NEG	NEG

FLUID PROPERTIES	method	limit/base	current	history1	history2	
Visc @ 40°C	cSt	ASTM D7279(m)	220	<b>211</b>	210	211

SAMPLE IMAGES	method	limit/base	current	history1	history2
---------------	--------	------------	---------	----------	----------



## GRAPHS



**Laboratory** : WearCheck - C8-1175 Appleby Line, Burlington, ON L7L 5H9  
**Sample No.** : WC0884592 **Recieved** : 18 Dec 2023  
**Lab Number** : **02603923** **Diagnosed** : 18 Dec 2023  
**Unique Number** : 5697008 **Diagnostician** : Wes Davis  
**Test Package** : IND 1 ( Additional Tests: FT-IR )

To discuss this sample report, contact Customer Service at 1-800-268-2131.  
 Test denoted (\*) outside scope of accreditation, (m) method modified, (e) tested at external lab.  
 Validity of results and interpretation are based on the sample and information as supplied.

**RTA - UGB**  
 C.P. 900  
 Ville de la Baie, QC  
 CA G7B 4G9  
 Contact: Alcan Epc  
 mathieu.tremblay2@riotinto.com  
 T: (418)697-9568  
 F: (418)697-9550