



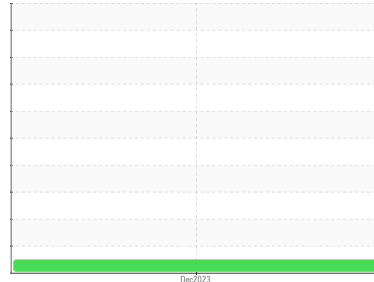
# OIL ANALYSIS REPORT

Sample Rating Trend

**NORMAL**



Area  
**[521844]**  
 Machine Id  
**1961323**  
 Component  
**Unknown Component**  
 Fluid  
**NOT GIVEN (--- GAL)**



## DIAGNOSIS

### Recommendation

This is a baseline read-out on the submitted sample.

### Wear

{not applicable}

### Contaminants

ISO Cleanliness Code (ISO 4406:1999): 19/16/10; Cumulative particle counts >4µm = 2510, >6µm = 331, >14µm = 6, >21µm = 1, >38µm = 0, >71µm = 0.

### Oil Condition

{not applicable}

## SAMPLE INFORMATION

	method	limit/base	current	history1	history2
Sample Number	Client Info		<b>PP</b>	---	---
Sample Date	Client Info		<b>14 Dec 2023</b>	---	---
Machine Age	hrs	Client Info	<b>0</b>	---	---
Oil Age	hrs	Client Info	<b>0</b>	---	---
Oil Changed	Client Info		<b>N/A</b>	---	---
Sample Status			<b>NORMAL</b>	---	---

## CONTAMINATION

	method	limit/base	current	history1	history2
Water	WC Method		<b>NEG</b>	---	---

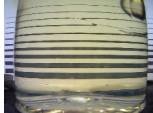

## FLUID CLEANLINESS

	method	limit/base	current	history1	history2
Particles >4µm	ASTM D7647	>5000	<b>2510</b>	---	---
Particles >6µm	ASTM D7647	>1300	<b>331</b>	---	---
Particles >14µm	ASTM D7647	>160	<b>6</b>	---	---
Particles >21µm	ASTM D7647	>40	<b>1</b>	---	---
Particles >38µm	ASTM D7647	>10	<b>0</b>	---	---
Particles >71µm	ASTM D7647	>3	<b>0</b>	---	---
Oil Cleanliness	ISO 4406 (c)	>19/17/14	<b>19/16/10</b>	---	---

## VISUAL

	method	limit/base	current	history1	history2	
White Metal	scalar	Visual*	NONE	<b>NONE</b>	---	---
Yellow Metal	scalar	Visual*	NONE	<b>NONE</b>	---	---
Precipitate	scalar	Visual*	NONE	<b>NONE</b>	---	---
Silt	scalar	Visual*	NONE	<b>NONE</b>	---	---
Debris	scalar	Visual*	NONE	<b>NONE</b>	---	---
Sand/Dirt	scalar	Visual*	NONE	<b>NONE</b>	---	---
Appearance	scalar	Visual*	NORML	<b>NORML</b>	---	---
Odor	scalar	Visual*	NORML	<b>NORML</b>	---	---

## SAMPLE IMAGES

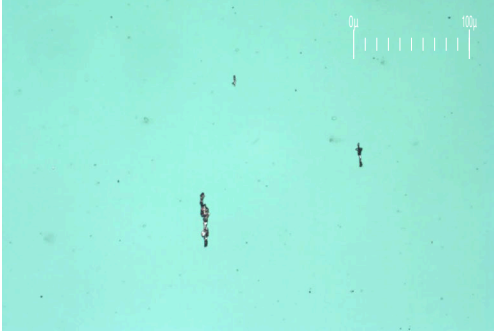
	method	limit/base	current	history1	history2
Color				no image	no image
Bottom				no image	no image



# FERROGRAPHY REPORT

Area  
**[521844]**  
 Machine Id  
**1961323**  
 Component  
**Unknown Component**  
 Fluid  
**NOT GIVEN (--- GAL)**

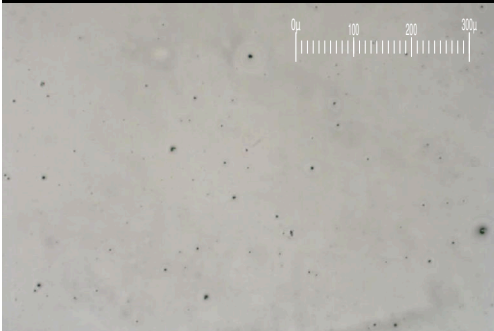
Magn: 200x Illum: BC



Magn: 50x Illum: RW



Magn: 100x Illum: RW



FERROGRAPHY	method	limit/base	current	history1	history2
Ferrous Rubbing	Scale 0-10 ASTM D7684*		2		
Ferrous Sliding	Scale 0-10 ASTM D7684*				
Ferrous Cutting	Scale 0-10 ASTM D7684*				
Ferrous Rolling	Scale 0-10 ASTM D7684*		1		
Ferrous Break-in	Scale 0-10 ASTM D7684*				
Ferrous Spheres	Scale 0-10 ASTM D7684*				
Ferrous Black Oxides	Scale 0-10 ASTM D7684*				
Ferrous Red Oxides	Scale 0-10 ASTM D7684*				
Ferrous Corrosive	Scale 0-10 ASTM D7684*				
Ferrous Other	Scale 0-10 ASTM D7684*				
Nonferrous Rubbing	Scale 0-10 ASTM D7684*				
Nonferrous Sliding	Scale 0-10 ASTM D7684*				
Nonferrous Cutting	Scale 0-10 ASTM D7684*				
Nonferrous Rolling	Scale 0-10 ASTM D7684*				
Nonferrous Other	Scale 0-10 ASTM D7684*				
Carbonaceous Material	Scale 0-10 ASTM D7684*				
Lubricant Degradation	Scale 0-10 ASTM D7684*				
Sand/Dirt	Scale 0-10 ASTM D7684*		1		
Fibres	Scale 0-10 ASTM D7684*				
Spheres	Scale 0-10 ASTM D7684*				
Other	Scale 0-10 ASTM D7684*		1		

## WEAR

{not applicable}